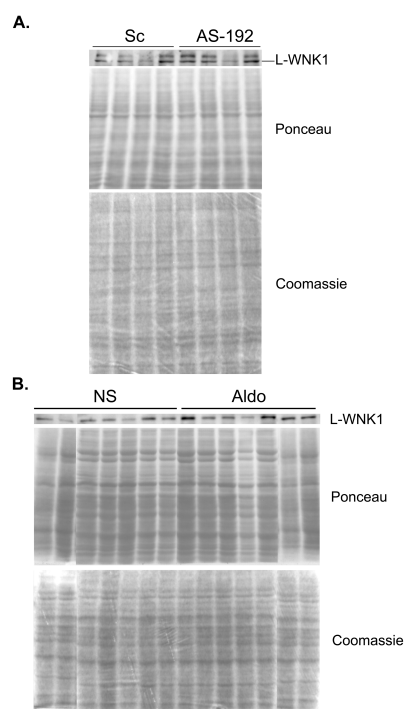
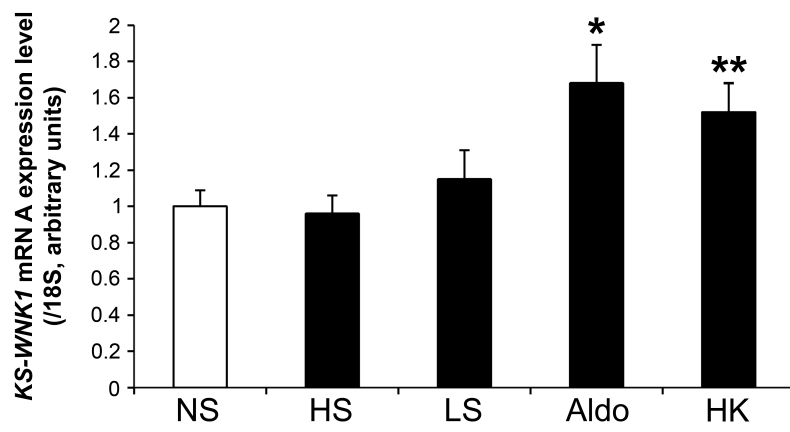


Supplemental Figure S1



Supplemental Figure S2



Supplemental Figure S3

miRanda miRBase	miRanda microrna.org	TargetScan	DianamicroT
hsa-miR-22	hsa-miR-335	hsa-miR-31	hsa-miR-27a
hsa-miR-138-1*	hsa-miR-1276	hsa-miR-103	hsa-miR-27b
hsa-miR-215	hsa-miR-770-5p	hsa-miR-107	hsa-miR-520d-5p
hsa-miR-17*	hsa-miR-1825	hsa-miR-192	hsa-miR-524-5p
hsa-miR-606	hsa-miR-324-5p	hsa-miR-215	hsa-miR-128a
hsa-miR-520d-5p	hsa-miR-192	hsa-miR-155	hsa-miR-128b
hsa-miR-524-5p	hsa-miR-215	hsa-miR-128	hsa-miR-181a
hsa-miR-384	hsa-miR-511	hsa-miR-27a	hsa-miR-181b
hsa-miR-192	hsa-miR-889	hsa-miR-27b	hsa-miR-181c
hsa-miR-324-5p	hsa-miR-320a	hsa-miR-17-5p	hsa-miR-181d
hsa-miR-660	hsa-miR-320b	hsa-miR-20	hsa-miR-876-3p
	hsa-miR-320c	hsa-miR-93	hsa-miR-561
	hsa-miR-320d	hsa-miR-106	hsa-miR-543
	hsa-miR-512-3p	hsa-miR-519-d	hsa-miR-606
	hsa-miR-155	hsa-miR-136	hsa-miR-215
	hsa-miR-302f	hsa-miR-543	hsa-miR-22
	hsa-miR-1205	hsa-miR-320a	
	hsa-miR-548o	hsa-miR-320b	
	hsa-miR-548a-3p	hsa-miR-320c	
	hsa-miR-548 e	hsa-miR-320d	
	hsa-miR-1323	hsa-miR-590	
	hsa-miR-548f	hsa-miR-590-3p	
	hsa-miR-768-3p		
	hsa-miR-199b-5p		
	hsa-miR-128		
	hsa-miR-27a		
	hsa-miR-27b		
	hsa-miR-590-3p		
	hsa-miR-582-5p		
	hsa-miR-606		
	hsa-miR-524-5p		
	hsa-miR-1283		
	hsa-miR-300		
	hsa-miR-381		
	hsa-miR-520d-5p		
	hsa-miR-518a-5p		
	hsa-miR-527		
	hsa-miR-1270		
	hsa-miR-875-3p		
	hsa-miR-655		

Supplemental Table S1: Potential target sites for miRs in *WNK1* 3'UTR. Potential target sites for miRs as determined by miRanda (miRBase and microrna.org), TargetScan and DianamicroT algorithms. miRs target sites presented by at least 2 algorithms are represented in dark.

	Control	HS	LS	Aldo	HK
Plasma					
Aldosterone (ng/dl)	23.5 ± 8.0	12.5 ± 8.7*	29.1 ± 9.5	82.6 ± 24.2 ^{\$}	42.1 ± 24.1*
Urine					
uNa/uCreat (mmol/mmol)	35.5 ± 16.1	157.0 ± 73.7**	18.9 ± 3.0*	29.2 ± 9.5	49.2 ± 13.6
uK/uCreat (mmol/mmol)	34.7 ± 16.5	38.2 ± 22.7	30.8 ± 12.7	53.6 ± 4.4	250.7 ± 153.6*
uCl/uCreat (mmol/mmol)	64.0 ± 24.3	187.9 ± 97.7**	32.9 ± 7.3*	31.3 ± 7.0	236.1 ± 139.1*

Supplemental Table 2 - Plasma aldosterone concentration and urine electrolytes of mice submitted to the different challenges.

Plasma aldosterone was measured by RIA using the Coat-a-Count Aldosterone In-vitro Diagnostic Test Kit (Siemens Healthcare). Urine electrolytes were determined using an Olympus AU400 analyser. * p < 0.05 compared to control diet, ** p < 0.005 compared to control diet, ^{\$} p < 1x10⁻⁴. Results are presented as mean +/- SD.