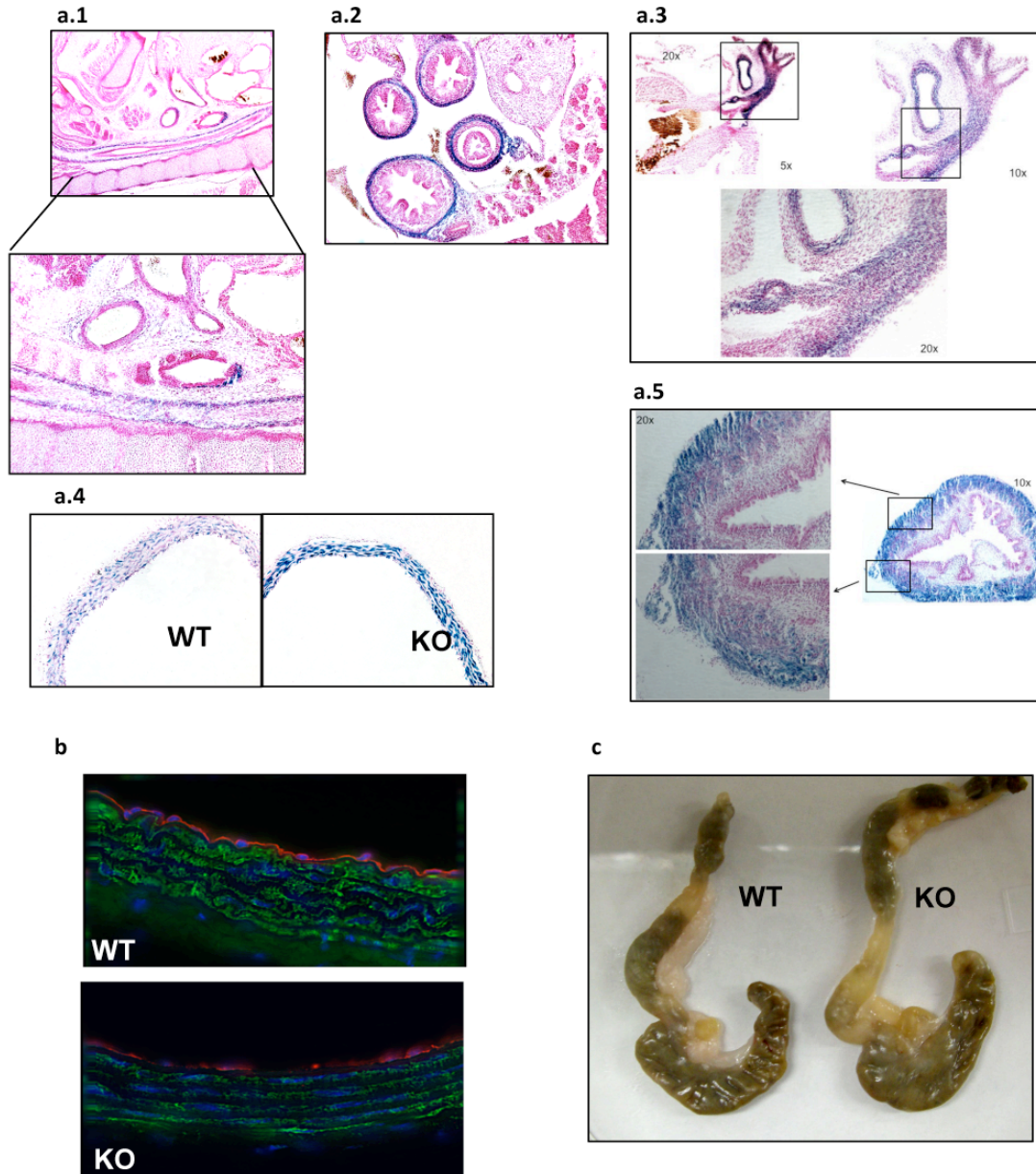


Supplementary Information

The knockout of miR-143 and -145 alters smooth muscle cell maintenance and vascular homeostasis in mice: correlates with human disease.

Leonardo Elia, Manuela Quintavalle, Jianlin Zhang, Riccardo Contu, Luca Cossu,
Michael V. G. Latronico, Kirk L. Peterson, Ciro Indolfi, Daniele Catalucci, Ju Chen, Sara
A. Courtneidge and Gianluigi Condorelli



Supplementary Figure S1. The expression of miRs 143 and 145, and the effect of their knockout.

(a) β -gal staining of: Esophagus of embryo at E15.5 (a.1); Small intestine at E15.5 (a.2); Heart at P1 (a.3); Adult aorta from heterozygous and KO mice (a.4); and bladder at P1 (a.5). (b) Immunofluorescence of adult aorta stained for smooth muscle α -actin (green) and Pecam (red). (c) Gross morphology of colon from WT and KO mice.