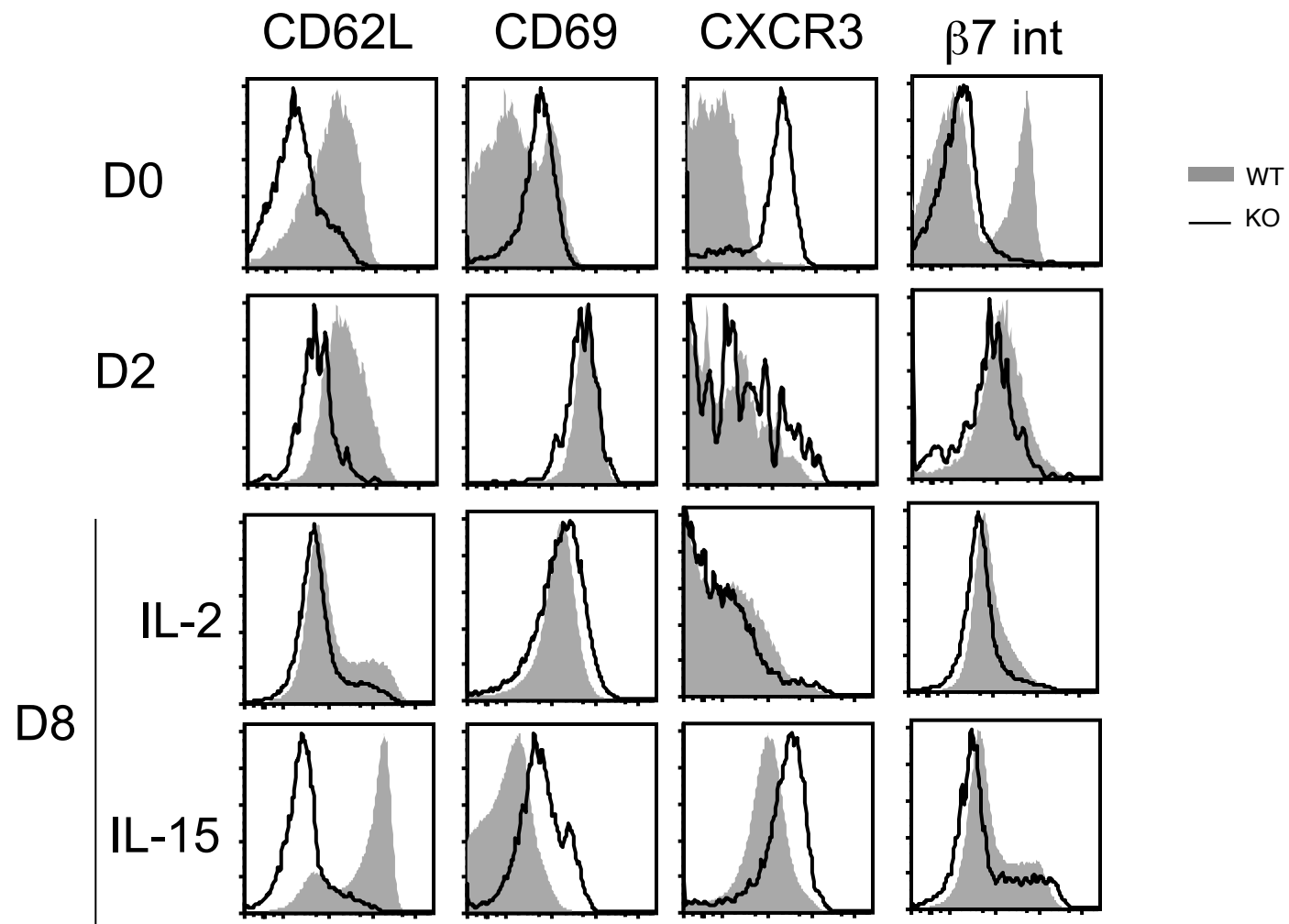


Supplementary Figure 1

Wild type or KLF2^{-/-} thymocytes were isolated and cultured as in Figure 3. (A) Shows expression of indicated cell surface markers on CD8 T cells at various times points during in vitro activation and cytokine culture, while (B) shows real-time PCR data for mRNA expression of the genes indicated, assayed on day 8 of the in vitro culture in IL-2 or IL-15.

Supplementary Figure 1A



Supplementary Figure 1B

