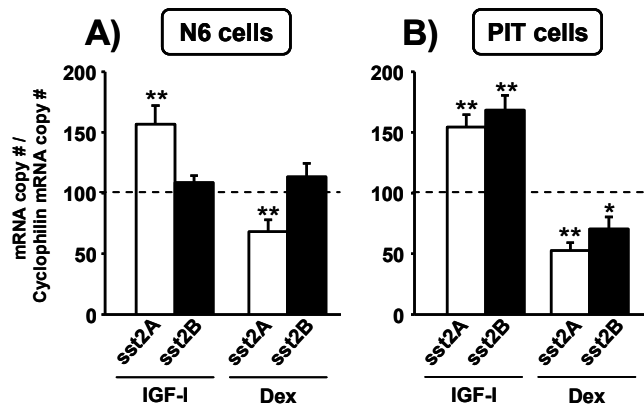


Supplemental figure 1.- Córdoba Chacón *et al.*



1  
2  
3  
4  
5  
6  
7  
8  
9  
10  
11  
12  
13

**Supplemental figure 1:** Effect of 24-h treatment of IGF-I (10nM) and dexamethasone (Dex; 10nM) on sst2A (white columns) and sst2B (black columns) expression in mouse hypothalamic N6 cells (A) and in primary pituitary cell cultures from male mice (B). mRNA copy numbers were determined by qRT-PCR, and the values were adjusted by cyclophilin A copy number as an internal control. Values represent the mean  $\pm$  SEM of 2-5 independent experiments (3-4 wells/treatment/experiment) and are expressed as percentage of vehicle-treated controls (shown by the dotted line set at 100%) within experiment. Asterisks (\*,  $p < 0,05$ ; \*\*,  $p < 0,01$ ) indicate values that differ from the corresponding vehicle-treated controls.