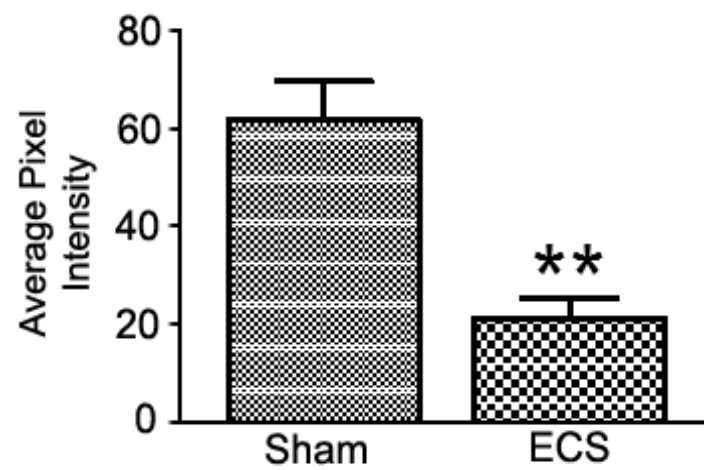
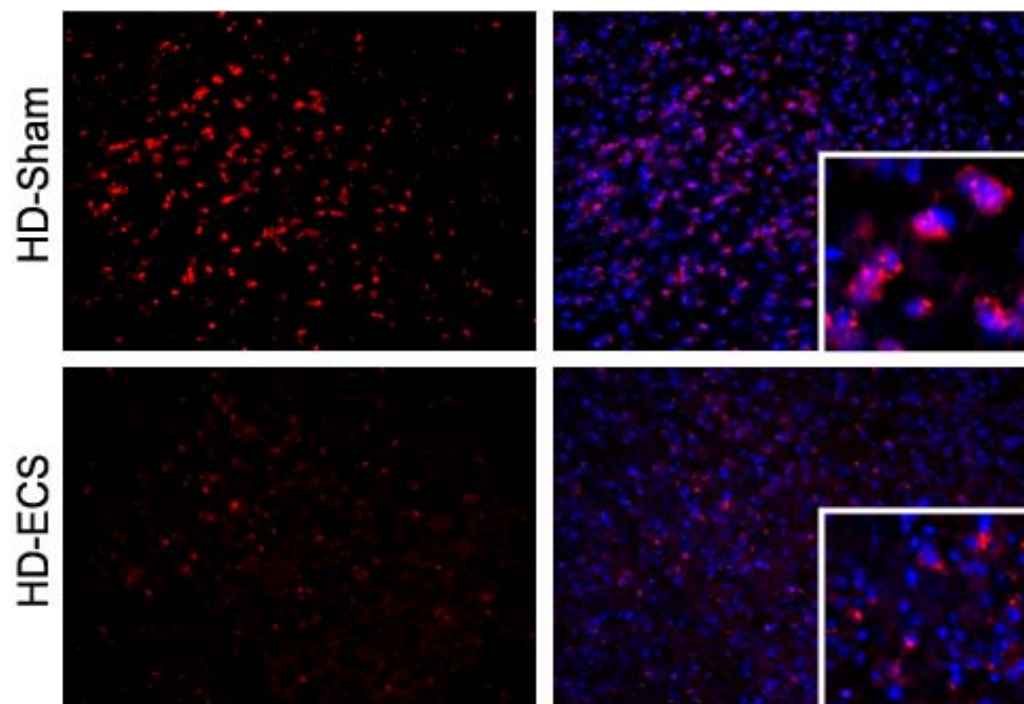


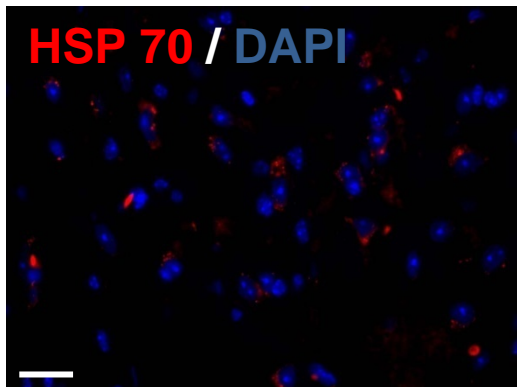
Supplementary Table 1.

Primary Antibody	Secondary Antibody	Dilution	Company	Mol wt
pCREB	Rabbit mAb	1:1000	Cell Signaling	43 kD
Akt	Rabbit pAb	1:800	Cell Signaling	60kD
pAkt	Rabbit mAb	1:800	Cell Signaling	60kD
DARPP32	Rabbit pAb	1:200	Abcam	32kD
Hsp 70	Mouse mAb	1:1500	Abcam	70-78kD
Hsp 40	Rabbit pAb	1:1500	Abcam	40kD
Hsf1	Rabbit pAb	1:500	Abcam	83kD
pTrkB	Rabbit pAb	1:1000	Abcam	92kD
TrkB	Rabbit pAb	1:1000	Santa Cruz	92 kD
PGC1 ∞	Rabbit pAb	1:5000	Santa Cruz	85-90kD
Grp78	Mouse mAb	1:1000	Santa Cruz	78kD
BDNF	Rabbit pAb	1:1000	Santa Cruz	<20kD

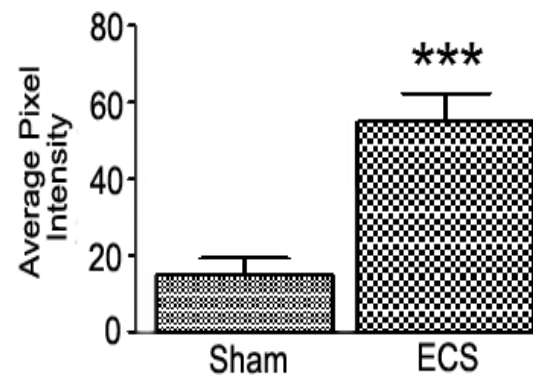
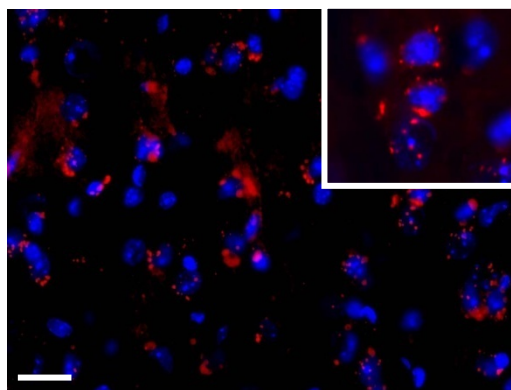
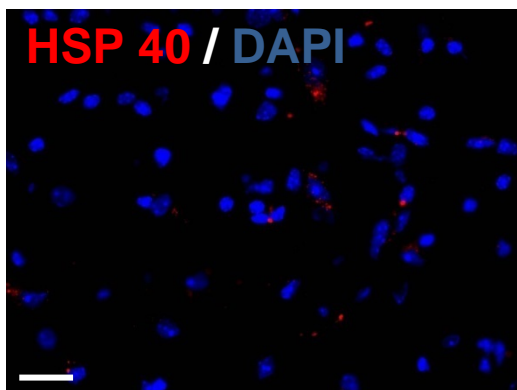
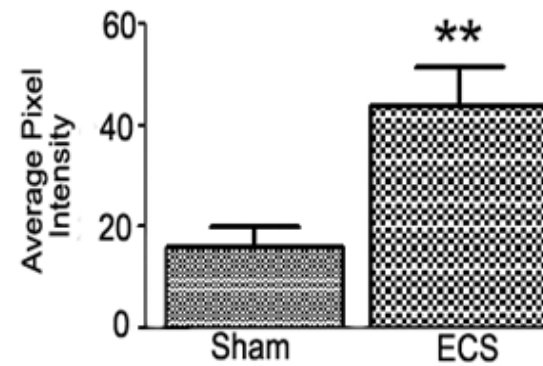
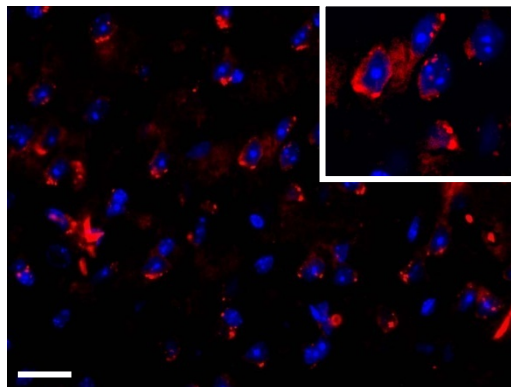


Supplementary Figure 1. ECS treatment attenuates Htt aggregation in cortex of HD mice. Representative images showing huntingtin (Htt) immunoreactive aggregates in the cortex (red; left micrographs; scale bar = 250 mm) stained with EM48 antibody and results of densitometric analysis of EM48 immunoreactivity (right graph) in 16 week-old N171-82Q HD mice in ECS- and sham-treated groups. Values are the mean and SEM (n = 9-10 mice per group). **p<0.01.

HD - Sham



HD - ECS

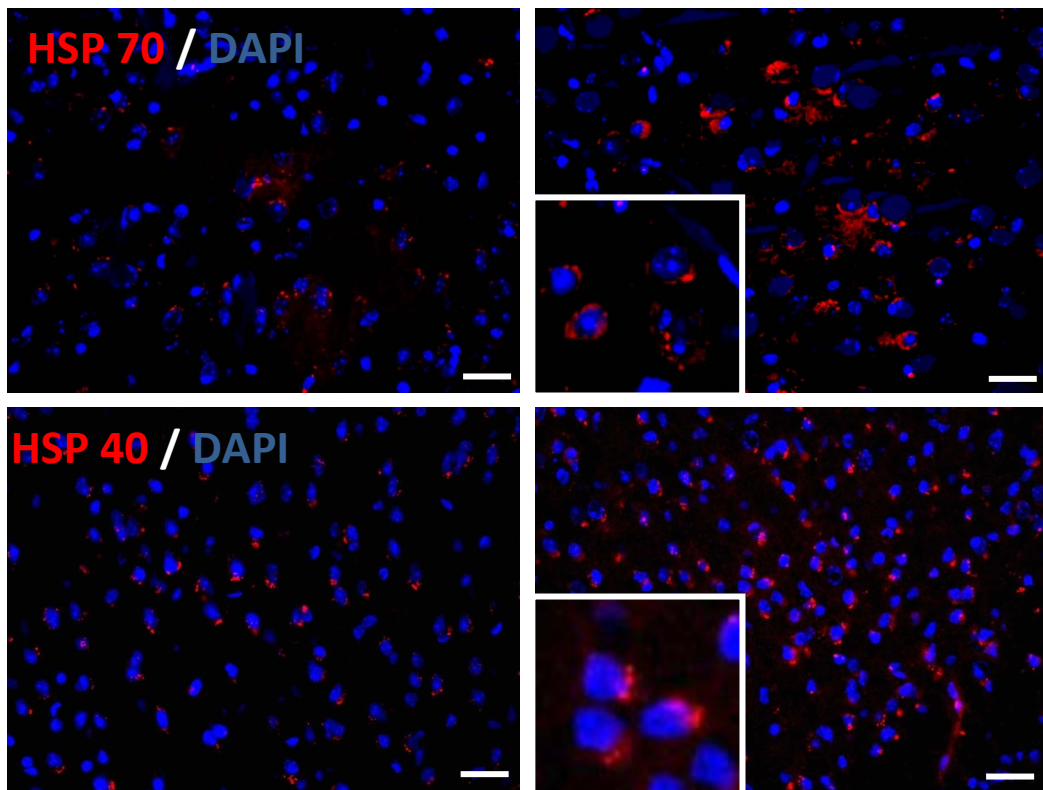


Striatum

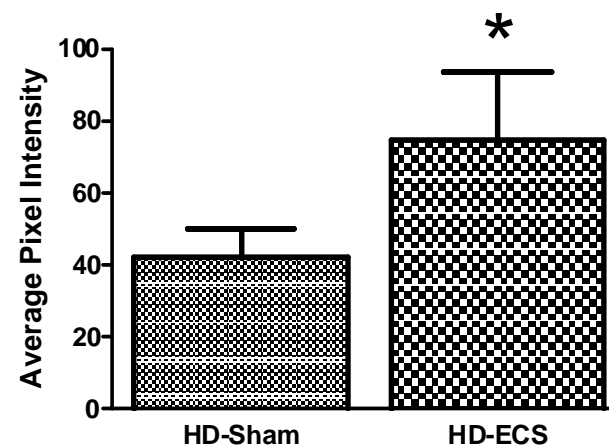
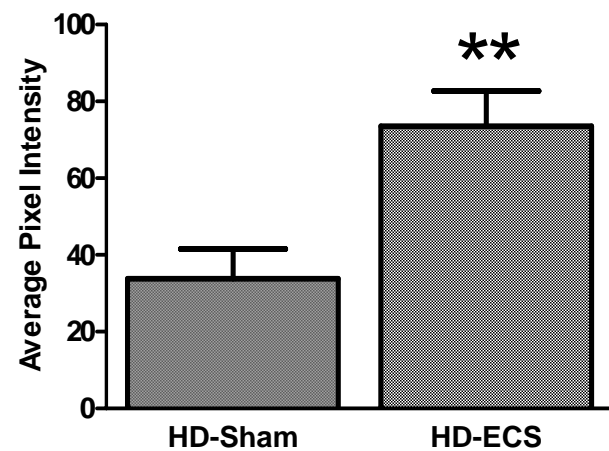
Supplementary Figure 2. Levels of protein chaperones are elevated in striatal cells of HD mice treated with ECS. Images showing HSP70 and HSP40 immunoreactivities (red in micrographs at right) and results of densitometric analysis of immunoreactivities (graphs) in 16 week-old HD mice in ECS or sham control treatment groups. Values are the mean and SEM (n = 10 mice per group). **p<0.01, ***p<0.001. Scale bar = 20 micrometers.

HD -Sham

HD -ECS



Cortex



Supplementary Figure 3. Levels of protein chaperones are elevated in cortical cells of HD mice treated with ECS. Images showing HSP70 and HSP40 immunoreactivities (red in micrographs at right) and results of densitometric analysis of immunoreactivities (graphs) in 16 week-old HD mice in ECS or sham control treatment groups. Values are the mean and SEM (n = 10 mice per group). *p<0.05, **p<0.01. Scale bar = 20 micrometers.