

Figure S1

Induction of p53wt or p53mut in D53 cells. Cells were induced and harvested at different time points. (A) $p53$ mRNA and the regulation of $p21^{CIP1/WAF1}$ were measured via real-time RT-PCR. $GAPDH$ expression was used to normalize expression levels. (B) In order to control for comparable cell cycle distribution during p53wt induction, DNA was stained with propidium iodide and analyzed by FACS.

Böhlig et al.
Supplementary Figure S2

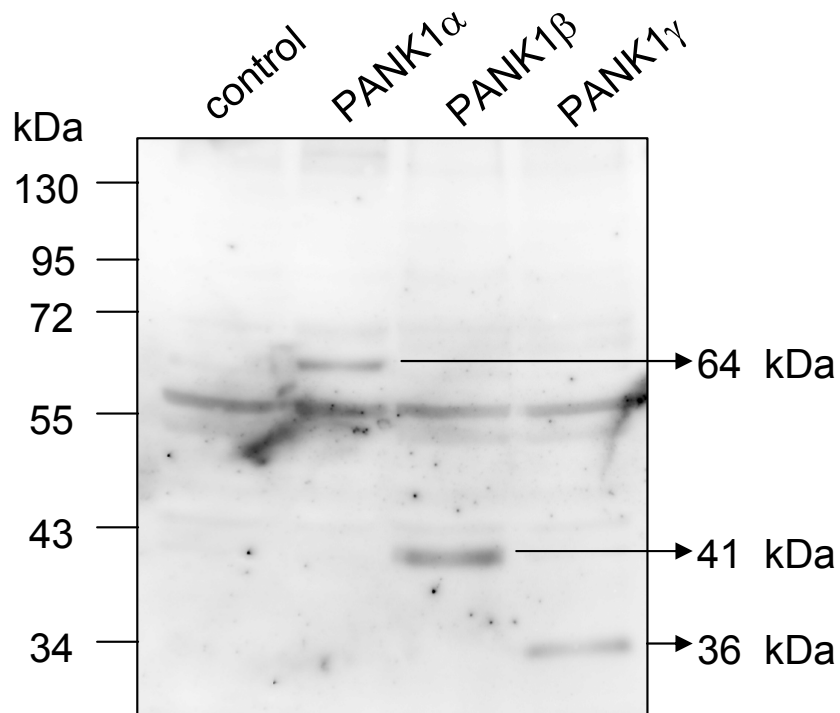


Figure S2

Western analysis with a PANK1 antibody detecting all three known PANK1 isoforms. Different expression plasmids or the control vector pcDNA3.1(+) were transfected into HCT116 cells. 24 h after transfection cell lysates were separated by SDS-PAGE and PANK1 was detected. The calculated molecular weights of the three different known PANK1 isoforms are given.

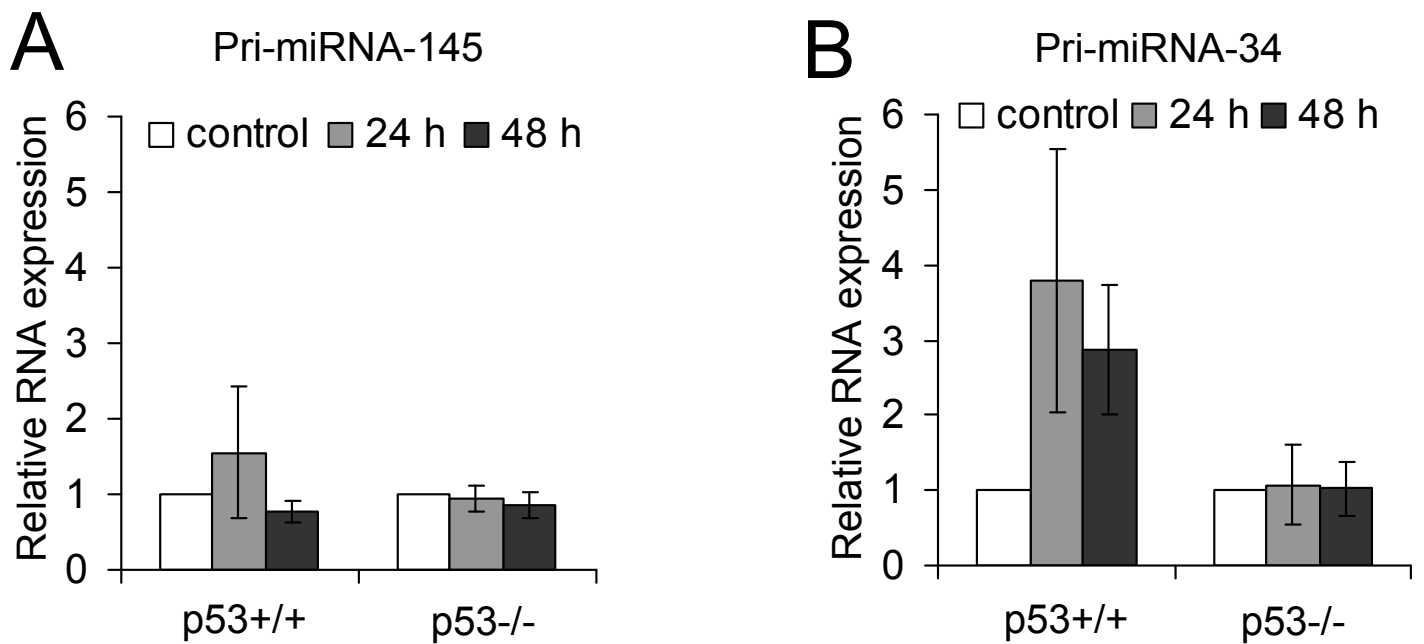
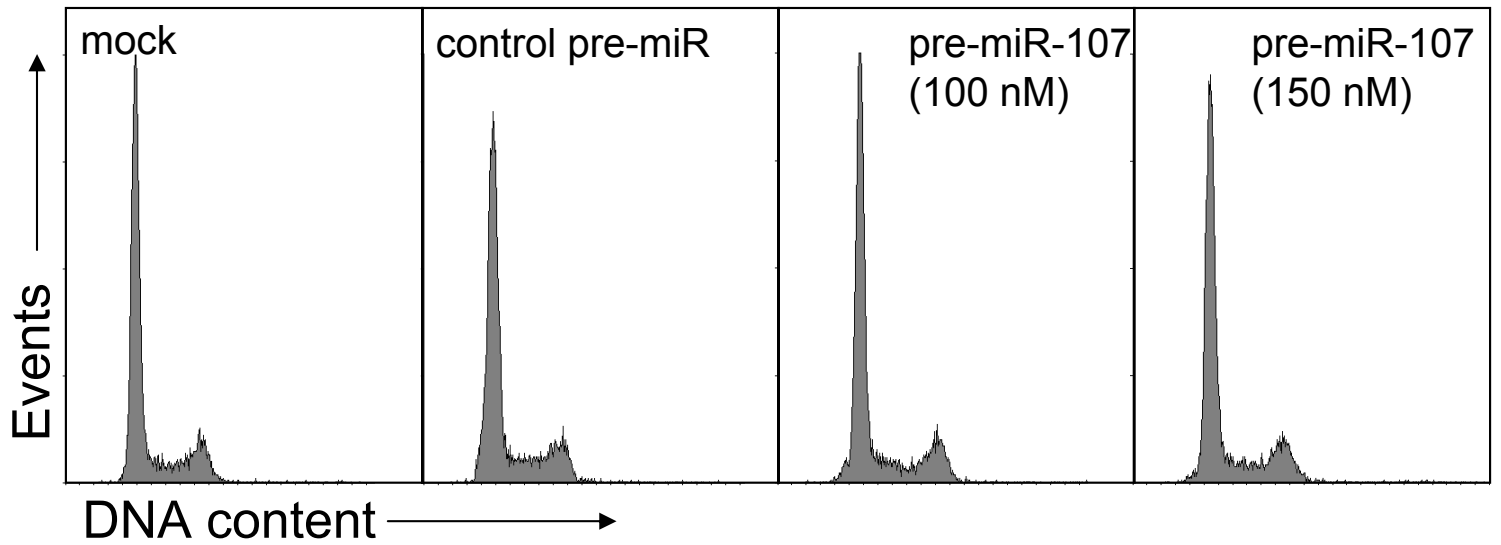


Figure S3

Regulation of other pri-miRNAs in the HCT116 cell system. (A) Expression of pri-miRNA-145 after treatment with doxorubicin. (B) pri-miRNA-34 expression served as a positive control for the transcriptional regulation by wild-type p53.

A



B

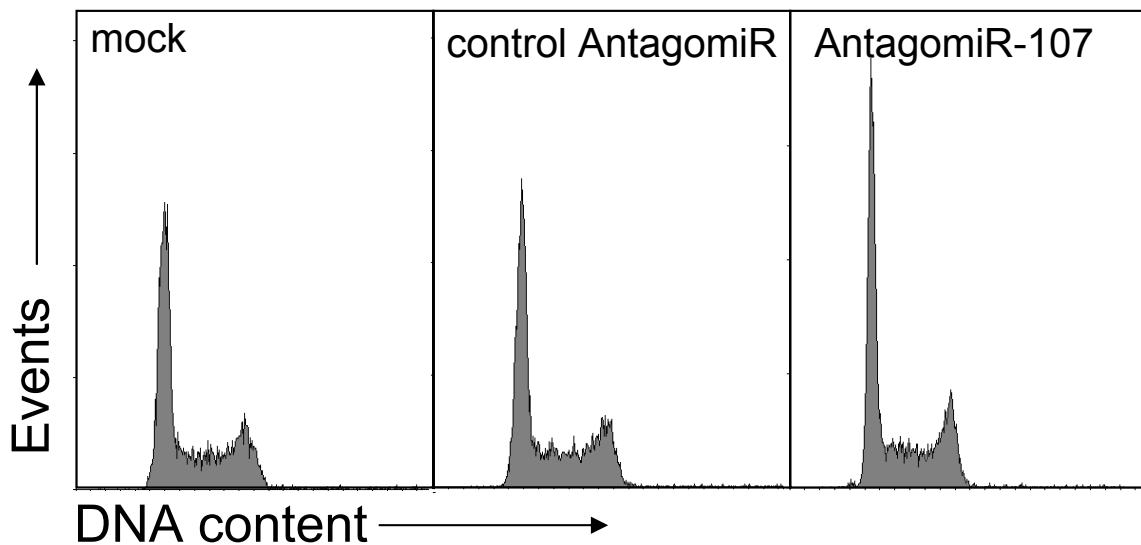


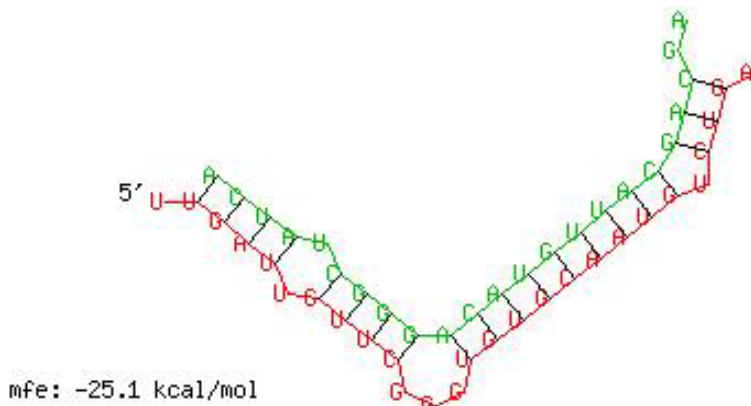
Figure S4

Cell cycle distribution of D53wt cells after transfection of miRNA mimic and AntagomiR. (A) FACS analyses after transfection of controls (mock, control pre-miR) and overexpression of miRNA-107. (B) FACS analyses after transfection of AntagomiR-107 or controls.

A

RNAhybrid miRNA binding site prediction

```
miRNA: 3' -ACUAUCGGG---ACAUGUUAC-GACGA 5'  
      |||| |::| |||:||||| |||  
p130: 5' UUGAUUGUUCGGGUGUGCAAUGUCUGA- 3'
```



B

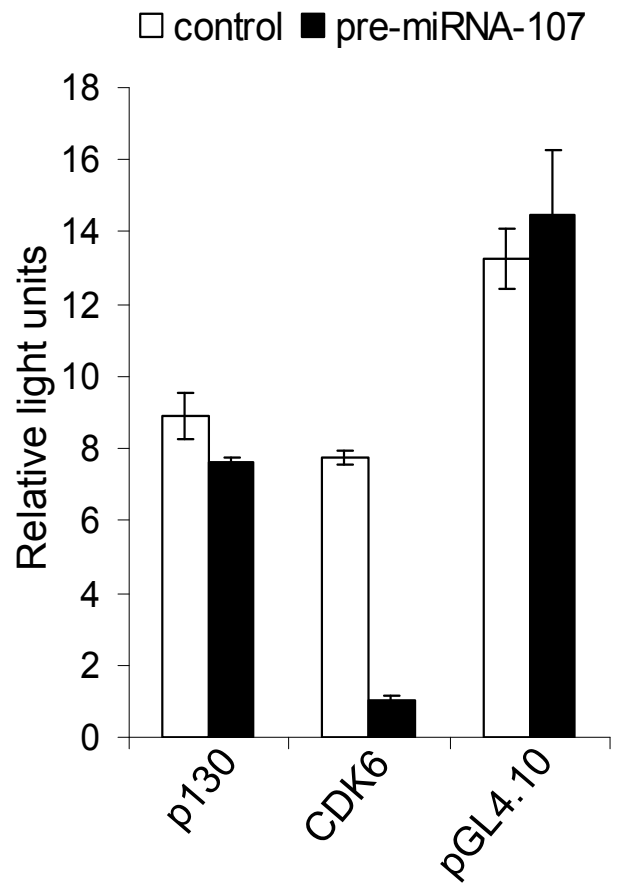


Figure S5

(A) Putative miRNA-107 binding site in the 3'-UTR of p130 predicted by the RNAhybrid algorithm. Minimum free energy (mfe) is given for the mRNA-miRNA interaction. (B) 3'-UTR Luciferase reporter assays were carried out after cotransfection of D53wt cells with Luciferase-UTR reporter and control pre-miRNA (control) or pre-miRNA-107. Empty pGL4.10 vector served as a negative control.

Table S1 Microarray Results

Probe_Set_ID	Gene Symbol	Fold change	Regulation	Gene Title
232164_s_at	EPPK1	63.2	up	epiplakin 1
238878_at	ARX	46.3	up	aristales related homeobox
200632_s_at	NDRG1	46.2	up	N-myc downstream regulated gene 1
203946_s_at	ARG2	45.2	up	arginase, type II
228153_at	IBRDC2	44.8	up	IBR domain containing 2
237732_at		44.1	up	Transcribed locus, moderately similar to NP_780633,1 hypothetical protein LOC109314 [Mus musculus]
232165_at	EPPK1	34.9	up	epiplakin 1
231969_at	STOX2	28.6	up	storkhead box 2
205003_at	DOCK4	27.1	up	dedicator of cytokinesis 4
212097_at	CAV1	25.5	up	caveolin 1, caveolae protein, 22kDa
210367_s_at	PTGES	25.5	up	prostaglandin E synthase
225606_at	BCL2L11	24.2	up	BCL2-like 11 (apoptosis facilitator)
223748_at	SLC4A11	23.8	up	solute carrier family 4, sodium bicarbonate transporter-like, member 11
202023_at	EFNA1	21.0	up	ephrin-A1
224724_at	SULF2	20.9	up	sulfatase 2
230655_at		20.7	up	Transcribed locus, weakly similar to NP_997349,1 FLJ46489 protein [Homo sapiens]
1560049_at		20.7	up	Hypothetical gene supported by BC046381
205534_at	PCDH7	19.7	up	BH-protocadherin (brain-heart)
203065_s_at	CAV1	19.5	up	caveolin 1, caveolae protein, 22kDa
209711_at	SLC35D1	19.4	up	solute carrier family 35 (UDP-glucuronic acid/UDP-N-acetylgalactosamine dual transporter), member D1
205559_s_at	PCSK5	18.7	up	proprotein convertase subtilisin/kexin type 5
205807_s_at	TUFT1	18.5	up	tuftelin 1
231382_at	FGF18	18.5	up	Fibroblast growth factor 18
202240_at	PLK1	17.8	down	polo-like kinase 1 (Drosophila)
228698_at	SOX7	17.3	up	SRY (sex determining region Y)-box 7
214321_at	NOV	17.2	up	nephroblastoma overexpressed gene
207030_s_at	CSRP2	17.2	up	cysteine and glycine-rich protein 2
202912_at	ADM	16.4	up	adrenomedullin
238029_s_at	SLC16A14	16.2	up	solute carrier family 16 (monocarboxylic acid transporters), member 14
220576_at	PGAP1	15.7	up	GPI deacylase
227467_at	RDH10	15.6	up	retinol dehydrogenase 10 (all-trans)
203780_at	EVA1	15.5	up	epithelial V-like antigen 1
204709_s_at	KIF23	15.3	down	kinesin family member 23
227964_at	FKSG44	14.6	up	FKSG44 gene
219115_s_at	IL20RA	14.5	up	interleukin 20 receptor, alpha
227432_s_at	INSR	14.2	up	Insulin receptor
1558143_a_at	BCL2L11	14.2	up	BCL2-like 11 (apoptosis facilitator)
221012_s_at	TRIM8	14.2	up	tripartite motif-containing 8 /// tripartite motif-containing 8
238733_at		14.1	up	Transcribed locus
218627_at	FLJ11259	13.5	up	hypothetical protein FLJ11259
222453_at	CYBRD1	12.9	up	cytochrome b reductase 1
238787_at		12.9	up	CDNA FLJ36663 fis, clone UTERU2002826
230104_s_at	TPPP	12.9	up	brain-specific protein p25 alpha
1569181_x_at	LOC51326	12.6	up	ADP-ribosylation factor-like
1553613_s_at	FOXC1	12.5	up	forkhead box C1
220940_at	KIAA1641	12.4	up	KIAA1641
232088_x_at		12.2	up	MRNA; cDNA DKFZp586K1721 (from clone DKFZp586K1721)
221541_at	CRISPLD2	12.2	up	cysteine-rich secretory protein LCCL domain containing 2
212599_at	AUTS2	12.0	up	autism susceptibility candidate 2
208156_x_at	EPPK1	12.0	up	epiplakin 1 /// epiplakin 1
204855_at	SERPINB5	11.9	up	serpin peptidase inhibitor, clade B (ovalbumin), member 5
204255_s_at	VDR	11.8	up	vitamin D (1,25- dihydroxyvitamin D3) receptor
227498_at		11.7	up	CDNA FLJ11723 fis, clone HEMBA1005314
235033_at	NPEPL1	11.7	up	Aminopeptidase-like 1
226021_at	RDH10	11.6	up	retinol dehydrogenase 10 (all-trans)
213348_at	CDKN1C	11.0	up	Cyclin-dependent kinase inhibitor 1C (p57, Kip2)
228613_at	RAB11FIP3	11.0	up	RAB11 family interacting protein 3 (class II)
203945_at	ARG2	10.8	up	arginase, type II
220048_at	EDAR	10.8	up	ectodysplasin A receptor
241370_at	LOC286052	10.7	up	hypothetical protein LOC286052
204859_s_at	APAF1	10.7	up	apoptotic peptidase activating factor
223229_at	UBE2T	10.6	down	ubiquitin-conjugating enzyme E2T (putative)
222762_x_at	LIMD1	10.6	up	LIM domains containing 1
1552283_s_at	ZDHHC11	10.5	up	zinc finger, DHHC-type containing 11
223132_s_at	TRIM8	10.4	up	tripartite motif-containing 8
243768_at	SENPF6	10.3	up	SUMO1/sentrin specific peptidase 6
38037_at	HBEGF	10.3	up	heparin-binding EGF-like growth factor
202954_at	UBE2C	10.2	down	ubiquitin-conjugating enzyme E2C
202779_s_at	UBE2S	10.2	down	ubiquitin-conjugating enzyme E2S
206307_s_at	FOXD1	10.0	up	forkhead box D1
235685_at		10.0	up	Transcribed locus
202504_at	TRIM29	9.8	up	tripartite motif-containing 29
241726_at	HLCS	9.8	up	Holocarboxylase synthetase (biotin-(propionyl-Coenzyme A-carboxylase (ATP-hydrolysing)) ligase)
212124_at	RAI17	9.8	up	retinoic acid induced 17
203323_at	CAV2	9.8	up	caveolin 2
225327_at	FLJ10980	9.7	up	hypothetical protein FLJ10980
225673_at	MYADM	9.7	down	myeloid-associated differentiation marker

231925_at		9,5	up	CDNA: FLJ23006 fis, clone LNG00414
227568_at	HECTD2	9,4	up	HECT domain containing 2
1557174_a_at	IRAK1BP1	9,4	up	Interleukin-1 receptor-associated kinase 1 binding protein 1
204032_at	BCAR3	9,4	up	breast cancer anti-estrogen resistance 3
229842_at	ELF3	9,4	up	E74-like factor 3 (ets domain transcription factor, epithelial-specific)
228937_at	FLJ38725	9,3	up	hypothetical protein FLJ38725
225626_at	PAG1	9,2	up	phosphoprotein associated with glycosphingolipid microdomains 1
226022_at	SASH1	9,2	up	SAM and SH3 domain containing 1
228717_at	PANK1	9,1	up	Pantothenate kinase 1
219209_at	IFIH1	9,1	up	interferon induced with helicase C domain 1
230252_at	GPR92	9,1	up	G protein-coupled receptor 92
208079_s_at	STK6	9,1	down	serine/threonine kinase 6
238542_at	ULBP2	9,1	up	UL16 binding protein 2
203665_at	HMOX1	9,1	up	heme oxygenase (decycling) 1
205990_s_at	WNT5A	9,0	up	wingless-type MMTV integration site family, member 5A
228032_s_at		9,0	up	CDNA FLJ36663 fis, clone UTERU2002826
218854_at	SART2	8,9	up	squamous cell carcinoma antigen recognized by T cells 2
208925_at	C3orf4	8,9	down	chromosome 3 open reading frame 4
225056_at	SIPA1L2	8,8	up	signal-induced proliferation-associated 1 like 2
226215_s_at	FBXL10	8,8	up	F-box and leucine-rich repeat protein 10
228115_at		8,8	up	Transcribed locus
203967_at	CDC6	8,8	down	CDC6 cell division cycle 6 homolog (S, cerevisiae)
230645_at	FRMD3	8,7	up	FERM domain containing 3
55065_at	MARK4	8,7	up	MAP/microtubule affinity-regulating kinase 4
211126_s_at	CSRP2	8,7	up	cysteine and glycine-rich protein 2
226982_at	ELL2	8,6	up	elongation factor, RNA polymerase II, 2
217923_at	PEF1	8,6	down	penta-EF-hand domain containing 1
202284_s_at	CDKN1A	8,6	up	cyclin-dependent kinase inhibitor 1A (p21, Cip1)
205235_s_at	MPHOSPH1	8,5	down	M-phase phosphoprotein 1
212799_at	STX6	8,5	up	syntaxin 6
212907_at	SLC30A1	8,5	up	Solute carrier family 30 (zinc transporter), member 1
206987_x_at	FGF18	8,5	up	fibroblast growth factor 18
221840_at	PTPRE	8,4	up	protein tyrosine phosphatase, receptor type, E
209898_x_at	ITSN2	8,4	up	intersectin 2
242693_at	CDC2L5	8,4	up	Cell division cycle 2-like 5 (cholinesterase-related cell division controller)
203821_at	HBEGF	8,3	up	heparin-binding EGF-like growth factor
211029_x_at	FGF18	8,2	up	fibroblast growth factor 18 /// fibroblast growth factor 18
203068_at	KLHL21	8,2	up	kelch-like 21 (Drosophila)
211676_s_at	IFNGR1	8,2	down	interferon gamma receptor 1 /// interferon gamma receptor 1
225878_at	KIF1B	8,2	up	Kinesin family member 1B
211519_s_at	KIF2C	8,1	down	kinesin family member 2C
209890_at	TSPAN5	8,1	up	tetraspanin 5 /// tetraspanin 5
202157_s_at	CUGBP2	8,1	up	CUG triplet repeat, RNA binding protein 2
228959_at		8,0	up	CDNA clone IMAGE:5262734
204254_s_at	VDR	8,0	up	vitamin D (1,25-dihydroxyvitamin D3) receptor
205439_at	GSTT2	8,0	up	glutathione S-transferase theta 2
221646_s_at	ZDHHC11	7,9	up	zinc finger, DHHC-type containing 11
211240_x_at	CTNND1	7,9	down	catenin (cadherin-associated protein), delta 1
212077_at	CALD1	7,9	up	caldesmon 1
203324_s_at	CAV2	7,9	up	caveolin 2
210026_s_at	CARD10	7,8	up	caspase recruitment domain family, member 10
203966_s_at	PPM1A	7,7	up	2C), magnesium-dependent, alpha isoform
219155_at	PITPNC1	7,7	up	phosphatidylinositol transfer protein, cytoplasmic 1
226099_at	ELL2	7,6	up	elongation factor, RNA polymerase II, 2
214104_at	GPR161	7,6	up	G protein-coupled receptor 161
222111_at	KIAA1164	7,6	up	Family with sequence similarity 63, member B
223314_at	TSPAN14	7,6	up	tetraspanin 14
206188_at	ZNF623	7,6	up	zinc finger protein 623
210053_at	TAF5	7,6	up	TAF5 RNA polymerase II, TATA box binding protein (TBP)-associated factor, 100kDa
226188_at	HSPC159	7,5	up	HSPC159 protein
204567_s_at	ABCG1	7,5	up	ATP-binding cassette, sub-family G (WHITE), member 1
218764_at	PRKCH	7,5	up	protein kinase C, eta
212964_at	HIC2	7,5	up	hypermethylated in cancer 2
233555_s_at	SULF2	7,5	up	sulfatase 2
242931_at		7,4	up	Transcribed locus
219696_at	FLJ20054	7,4	up	hypothetical protein FLJ20054
202464_s_at	PFKFB3	7,4	up	6-phosphofructo-2-kinase/fructose-2,6-biphosphatase 3
231090_s_at	ARID2	7,4	up	AT rich interactive domain 2 (ARID, RFX-like)
226968_at	KIF1B	7,4	up	kinesin family member 1B
202488_s_at	FXYD3	7,4	up	FXYD domain containing ion transport regulator 3
227345_at	TNFRSF10D	7,4	up	tumor necrosis factor receptor superfamily, member 10d, decoy with truncated death domain
201555_at	MCM3	7,4	down	MCM3 minichromosome maintenance deficient 3 (S, cerevisiae)
205074_at	SLC22A5	7,4	up	solute carrier family 22 (organic cation transporter), member 5
226121_at	MGC23280	7,3	up	hypothetical protein MGC23280
219340_s_at	CLN8	7,3	up	ceroid-lipofuscinosis, neuronal 8 (epilepsy, progressive with mental retardation)
211712_s_at	ANXA9	7,3	up	annexin A9 /// annexin A9
239934_x_at		7,3	up	Homo sapiens, clone IMAGE:4865533, mRNA
227194_at	FAM3B	7,2	up	family with sequence similarity 3, member B
237400_at	ATP5S	7,2	up	ATP synthase, H+ transporting, mitochondrial F0 complex, subunit s (factor B)
219165_at	PDLIM2	7,2	up	PDZ and LIM domain 2 (mystique)
241342_at	TMEM65	7,2	up	transmembrane protein 65

201368_at	ZFP36L2	7,2	up	zinc finger protein 36, C3H type-like 2
218988_at	SLC35E3	7,1	up	solute carrier family 35, member E3
223474_at	C14orf4	7,1	up	chromosome 14 open reading frame 4
203627_at	IGF1R	7,1	up	Insulin-like growth factor 1 receptor
213435_at	SATB2	7,1	down	SATB family member 2
221858_at	TBC1D12	7,1	up	TBC1 domain family, member 12
1556744_a_at	LOC440971	7,1	up	similar to Zinc finger protein Rlf (Rearranged L-myc fusion gene protein) (Zn-15 related protein)
212942_s_at	KIAA1199	7,1	up	KIAA1199
224516_s_at	CXXC5	7,0	up	CXXC finger 5 /// CXXC finger 5
228452_at	C17orf39	7,0	up	chromosome 17 open reading frame 39
223081_at	PHF23	7,0	down	PHD finger protein 23
205596_s_at	SMURF2	7,0	up	SMAD specific E3 ubiquitin protein ligase 2
203109_at	UBE2M	7,0	down	ubiquitin-conjugating enzyme E2M (UBC12 homolog, yeast)
240314_at	NCOR1	6,9	up	Nuclear receptor co-repressor 1
212828_at	SYNJ2	6,9	up	synaptojanin 2
221245_s_at	C2orf31	6,9	up	chromosome 2 open reading frame 31 /// chromosome 2 open reading frame 31
213931_at	ID2 /// ID2B	6,9	up	negative helix-loop-helix protein
201473_at	JUNB	6,9	up	jun B proto-oncogene
204318_s_at	GTSE1	6,9	down	G-2 and S-phase expressed 1
209185_s_at	IRS2	6,9	up	insulin receptor substrate 2
212256_at	GALNT10	6,8	up	UDP-N-acetyl-alpha-D-galactosamine:polypeptide N-acetylgalactosaminyltransferase 10 (GalNac-T10)
206482_at	PTK6	6,8	up	PTK6 protein tyrosine kinase 6
213212_x_at	LOC161527	6,8	up	hypothetical protein LOC161527
231875_at	KIF21A	6,8	up	kinesin family member 21A
202286_s_at	TACSTD2	6,8	up	tumor-associated calcium signal transducer 2
210052_s_at	TPX2	6,8	down	TPX2, microtubule-associated, homolog (Xenopus laevis)
242463_x_at	ZNF600	6,7	up	zinc finger protein 600
209735_at	ABCG2	6,7	up	ATP-binding cassette, sub-family G (WHITE), member 2
201853_s_at	CDC25B	6,7	down	cell division cycle 25B
222829_s_at	IL20RA	6,7	up	interleukin 20 receptor, alpha
203735_x_at	PTPRF	6,7	down	PTPRF interacting protein, binding protein 1 (liprin beta 1)
212239_at	PIK3R1	6,7	up	phosphoinositide-3-kinase, regulatory subunit 1 (p85 alpha)
218718_at	PDGFC	6,7	up	platelet derived growth factor C
204516_at	ATXN7	6,7	up	ataxin 7
218346_s_at	SESN1	6,7	up	sestrin 1
214965_at	MGC26885	6,7	up	hypothetical protein MGC26885
1557522_x_at		6,7	up	CDNA clone IMAGE:5311184
1552619_a_at	ANLN	6,7	down	anillin, actin binding protein (scraps homolog, Drosophila)
219918_s_at	ASPM	6,7	down	asp (abnormal spindle)-like, microcephaly associated (Drosophila)
214663_at	RIPK5	6,7	up	receptor interacting protein kinase 5
206652_at	ZMYM5	6,6	up	zinc finger, MYM-type 5
227404_s_at	EGR1	6,6	up	Early growth response 1
232202_at		6,6	up	CDNA: FLJ21274 fis, clone COL01781
238480_at	18 open	6,6	up	Chromosome 18 open reading frame 50
202158_s_at	CUGBP2	6,6	up	CUG triplet repeat, RNA binding protein 2
209257_s_at	CSPG6	6,6	down	chondroitin sulfate proteoglycan 6 (bamacan)
229114_at	GAB1	6,6	up	GRB2-associated binding protein 1
204653_at	TFAP2A	6,6	up	transcription factor AP-2 alpha (activating enhancer binding protein 2 alpha)
227545_at	BARD1	6,6	down	BRCA1 associated RING domain 1
225834_at	FAM72A	6,6	down	family with sequence similarity 72, member A
236718_at		6,6	up	Transcribed locus, weakly similar to NP_055301,1 neuronal thread protein AD7c-NTP [Homo sapiens]
238599_at	IRAK1BP1	6,5	up	interleukin-1 receptor-associated kinase 1 binding protein 1
204768_s_at	FEN1	6,5	down	flap structure-specific endonuclease 1
202364_at	MXI1	6,5	up	MAX interactor 1 /// MAX interactor 1
204148_s_at	POMZP3	6,5	up	zona pellucida glycoprotein 3 (sperm receptor) /// POM (POM121 homolog, rat) and ZP3 fusion
226796_at	LOC116236	6,5	up	hypothetical protein LOC116236
209712_at	SLC35D1	6,4	up	solute carrier family 35 (UDP-glucuronic acid/UDP-N-acetylgalactosamine dual transporter), member D1
229893_at	FRMD3	6,4	up	FERM domain containing 3
224793_s_at	TGFBR1	6,4	up	transforming growth factor, beta receptor I (activin A receptor type II-like kinase, 53kDa)
226849_at	DENND1A	6,4	up	DENN/MADD domain containing 1A
218009_s_at	PRC1	6,4	down	protein regulator of cytokinesis 1
219377_at	FAM59A	6,4	up	family with sequence similarity 59, member A
204496_at	STRN3	6,4	down	striatin, calmodulin binding protein 3
219380_x_at	POLH	6,3	up	polymerase (DNA directed), eta
1557701_s_at	POLH	6,3	up	polymerase (DNA directed), eta
222608_s_at	ANLN	6,3	down	anillin, actin binding protein (scraps homolog, Drosophila)
222740_at	ATAD2	6,3	down	ATPase family, AAA domain containing 2
209339_at	SIAH2	6,3	up	seven in absentia homolog 2 (Drosophila) /// seven in absentia homolog 2 (Drosophila)
228005_at	ZXDB	6,3	up	zinc finger, X-linked, duplicated B
221864_at	MGC13024	6,3	up	hypothetical protein MGC13024
204373_s_at	CAP350	6,2	up	centrosome-associated protein 350
226002_at	GAB1	6,2	up	GRB2-associated binding protein 1
232645_at	LOC153684	6,2	up	hypothetical protein LOC153684
227492_at		6,2	down	Transcribed locus, moderately similar to NP_689672,2 hypothetical protein MGC45438 [Homo sapiens]
56256_at	SIDT2	6,2	up	SID1 transmembrane family, member 2
212653_s_at	EHBP1	6,2	down	EH domain binding protein 1
1553528_a_at	TAF5	6,1	up	TAF5 RNA polymerase II, TATA box binding protein (TBP)-associated factor, 100kDa
244828_x_at	LOC92345	6,1	down	hypothetical protein BC008207
211675_s_at	MDFIC	6,1	up	MyoD family inhibitor domain containing /// MyoD family inhibitor domain containing
204326_x_at	MT1X	6,1	up	metallothionein 1X
205087_at	RWDD3	6,1	up	RWD domain containing 3

215101_s_at	CXCL5	6,1	down	chemokine (C-X-C motif) ligand 5
201020_at	YWHAH	6,1	down	tyrosine 3-monooxygenase/tryptophan 5-monooxygenase activation protein, eta polypeptide
225711_at	ARL6IP6	6,1	down	ADP-ribosylation-like factor 6 interacting protein 6
228155_at	C10orf58	6,1	up	chromosome 10 open reading frame 58
1556385_at	CLC	6,1	up	Cardiotrophin-like cytokine factor 1
227395_at	MGC10233	6,1	up	Leucine rich repeat containing 35
65588_at	LOC388796	6,1	down	hypothetical LOC388796
210910_s_at	POMZP3	6,1	up	zona pellucida glycoprotein 3 (sperm receptor) /// POM (POM121 homolog, rat) and ZP3 fusion
227962_at	ACOX1	6,0	up	Acyl-Coenzyme A oxidase 1, palmitoyl
232014_at	ZNF30	6,0	up	zinc finger protein 30 (KOX 28)
219736_at	TRIM36	6,0	up	tripartite motif-containing 36
207154_at	DIO3	6,0	up	deiodinase, iodothyronine, type III
228573_at	ANTXR2	6,0	up	Anthrax toxin receptor 2
212020_s_at	MKI67	6,0	down	antigen identified by monoclonal antibody Ki-67
210878_s_at	JMJD1B	6,0	down	jumonji domain containing 1B
238121_at		6,0	up	CDNA FLJ26959 fis, clone SLV00568
227792_at		5,9	up	CDNA: FLJ22994 fis, clone KAT11918
218782_s_at	ATAD2	5,9	down	ATPase family, AAA domain containing 2
202289_s_at	TACC2	5,9	up	transforming, acidic coiled-coil containing protein 2
209788_s_at	ARTS-1	5,9	up	type 1 tumor necrosis factor receptor shedding aminopeptidase regulator
218585_s_at	DTL	5,9	down	denticleless homolog (Drosophila)
1555996_s_at	EIF4A2	5,9	down	eukaryotic translation initiation factor 4A, isoform 2
239571_at	MEF2A	5,9	up	MADS box transcription enhancer factor 2, polypeptide A (myocyte enhancer factor 2A)
220934_s_at	MGC3196	5,9	down	hypothetical protein MGC3196
218603_at	HECA	5,9	up	headcase homolog (Drosophila)
202672_s_at	ATF3	5,9	up	activating transcription factor 3
238999_at		5,9	up	Transcribed locus
234331_s_at	NSE1	5,9	up	Family with sequence similarity 84, member A
202013_s_at	EXT2	5,8	up	exostosin (multiple) 2
225655_at	UHRF1	5,8	down	ubiquitin-like, containing PHD and RING finger domains, 1
241756_at	SMARCA2	5,8	up	SWI/SNF related, matrix associated, actin dependent regulator of chromatin, subfamily a, member 2
222555_s_at	MRPL44	5,8	down	mitochondrial ribosomal protein L44
217599_s_at	MDFIC	5,8	up	MyoD family inhibitor domain containing
221577_x_at	GDF15	5,8	down	growth differentiation factor 15
204444_at	KIF11	5,8	down	kinesin family member 11
204141_at	TUBB2	5,8	up	tubulin, beta 2
222958_s_at	DEPDC1	5,8	down	DEP domain containing 1
201780_s_at	RNF13	5,8	up	ring finger protein 13
229711_s_at	MGC5370	5,8	up	hypothetical protein MGC5370
203642_s_at	COBLL1	5,7	up	COBL-like 1
40420_at	STK10	5,7	up	serine/threonine kinase 10
55081_at	MICAL-L1	5,7	up	MICAL-like 1
201416_at	SOX4	5,7	down	SRY (sex determining region Y)-box 4
226208_at	ZSWIM6	5,7	up	zinc finger, SWIM-type containing 6
204641_at	NEK2	5,7	down	NIMA (never in mitosis gene a)-related kinase 2
235763_at	SLC44A5	5,7	up	solute carrier family 44, member 5
206747_at	KIAA0514	5,7	up	KIAA0514
205756_s_at	F8	5,7	up	coagulation factor VIII, procoagulant component (hemophilia A)
1555339_at	RAP1A	5,7	up	RAP1A, member of RAS oncogene family
228443_s_at	SET8	5,7	up	PR/SET domain containing protein 8
219517_at	ELL3	5,7	up	elongation factor RNA polymerase II-like 3
47083_at	C7orf26	5,6	up	chromosome 7 open reading frame 26
1558019_at	DST	5,6	up	Dystonin
204128_s_at	RFC3	5,6	down	replication factor C (activator 1) 3, 38kDa
212812_at		5,6	up	CDNA: FLJ22642 fis, clone HSI06970
239503_at		5,6	up	CDNA clone IMAGE:5301910
225387_at	TSPAN5	5,6	up	tetraspanin 5
213647_at	DNA2L	5,6	down	DNA2 DNA replication helicase 2-like (yeast)
31845_at	ELF4	5,6	up	E74-like factor 4 (ets domain transcription factor)
209640_at	PML	5,6	up	promyelocytic leukemia
1554678_s_at	HNRPDL	5,6	down	heterogeneous nuclear ribonucleoprotein D-like
201924_at	AFF1	5,6	up	AF4/FMR2 family, member 1
209408_at	KIF2C	5,6	down	kinesin family member 2C
205111_s_at	PLCE1	5,6	up	phospholipase C, epsilon 1
202131_s_at	RIOK3	5,6	up	RIO kinase 3 (yeast) /// RIO kinase 3 (yeast)
208944_at	TGFBR2	5,6	down	transforming growth factor, beta receptor II (70/80kDa)
202657_s_at	SERTAD2	5,5	up	SERTA domain containing 2
232511_at	RANBP2L1	5,5	up	RAN binding protein 2-like 1
218297_at	C10orf97	5,5	up	chromosome 10 open reading frame 97
210609_s_at	TP53I3	5,5	up	tumor protein p53 inducible protein 3
204780_s_at	FAS	5,5	up	Fas (TNF receptor superfamily, member 6)
218411_s_at	MBIP	5,5	down	MAP3K12 binding inhibitory protein 1
207828_s_at	CENPF	5,5	down	centromere protein F, 350/400ka (mitosin)
203935_at	ACVR1	5,5	up	activin A receptor, type I
238156_at	RPS6	5,5	down	Ribosomal protein S6
221685_s_at	FLJ20364	5,5	down	hypothetical protein FLJ20364
241348_at	ZNF654	5,4	up	Zinc finger protein 654
1555007_s_at	WDR66	5,4	up	WD repeat domain 66
208937_s_at	ID1	5,4	down	inhibitor of DNA binding 1, dominant negative helix-loop-helix protein
1555920_at	CBX3	5,4	down	Chromobox homolog 3 (HP1 gamma homolog, Drosophila)
214783_s_at	ANXA11	5,4	up	annexin A11

219032_x_at	OPN3	5,4	down	opsin 3 (encephalopsin, panopsin)
238623_at	MAP3K4	5,4	up	Mitogen-activated protein kinase kinase kinase 4
224618_at		5,4	up	
1564010_at	ARTS-1	5,4	up	Type 1 tumor necrosis factor receptor shedding aminopeptidase regulator
211778_s_at	OVOL2	5,3	up	ovo-like 2 (Drosophila) /// ovo-like 2 (Drosophila)
223182_s_at	AGPAT3	5,3	up	1-acylglycerol-3-phosphate O-acyltransferase 3
212507_at	RW1	5,3	up	RW1 protein
218897_at	MGC10993	5,3	down	hypothetical protein MGC10993
208750_s_at	ARF1	5,3	down	ADP-ribosylation factor 1
227949_at	PHACTR3	5,3	up	phosphatase and actin regulator 3
38158_at	ESPL1	5,3	down	extra spindle poles like 1 (S, cerevisiae)
214710_s_at	CCNB1	5,3	down	cyclin B1
217824_at	UBE2J1	5,3	up	ubiquitin-conjugating enzyme E2, J1 (UBC6 homolog, yeast)
221935_s_at	AER61	5,3	up	AER61 glycosyltransferase
227178_at	CUGBP2	5,3	up	CUG triplet repeat, RNA binding protein 2
209784_s_at	JAG2	5,3	up	jagged 2
212558_at	SPRY1	5,3	up	sprouty homolog 1, antagonist of FGF signaling (Drosophila)
1558017_s_at	PAWR	5,3	up	PRKC, apoptosis, WT1, regulator
209067_s_at	HNRPDL	5,2	down	heterogeneous nuclear ribonucleoprotein D-like
226347_at		5,2	up	
221773_at	ELK3	5,2	up	ELK3, ETS-domain protein (SRF accessory protein 2)
203528_at	SEMA4D	5,2	up	(semaphorin) 4D
231873_at	BMPR2	5,2	up	bone morphogenetic protein receptor, type II (serine/threonine kinase)
1555340_x_at	RAP1A	5,2	up	RAP1A, member of RAS oncogene family
226184_at	FMNL2	5,1	up	formin-like 2
225088_at	FLJ31153	5,1	down	hypothetical protein FLJ31153
212959_s_at	GNPTAB	5,1	up	N-acetylglucosamine-1-phosphate transferase, alpha and beta subunits
218632_at	HECTD3	5,1	down	HECT domain containing 3
236251_at	ITGAV	5,1	up	Integrin, alpha V (vitronectin receptor, alpha polypeptide, antigen CD51)
221258_s_at	KIF18A	5,1	down	kinesin family member 18A /// kinesin family member 18A
226247_at	PLEKHA1	5,1	up	pleckstrin homology domain containing, family A (phosphoinositide binding specific) member 1
225864_at	FAM84B	5,1	up	family with sequence similarity 84, member B
203755_at	BUB1B	5,1	down	BUB1 budding uninhibited by benzimidazoles 1 homolog beta (yeast)
221957_at	PDK3	5,1	up	Pyruvate dehydrogenase kinase, isoenzyme 3
204917_s_at	MLLT3	5,1	down	myeloid/lymphoid or mixed-lineage leukemia (trithorax homolog, Drosophila); translocated to, 3
218294_s_at	NUP50	5,1	down	nucleoporin 50kDa
212193_s_at	LARP1	5,0	down	La ribonucleoprotein domain family, member 1
206613_s_at	TAF1A	5,0	down	TATA box binding protein (TBP)-associated factor, RNA polymerase I, A, 48kDa
224880_at	RALA	5,0	up	v-ral simian leukemia viral oncogene homolog A (ras related)
207088_s_at	SLC25A11	5,0	down	solute carrier family 25 (mitochondrial carrier; oxoglutarate carrier), member 11
212989_at	TMEM23	5,0	up	transmembrane protein 23
212522_at	PDE8A	5,0	up	phosphodiesterase 8A
201804_x_at	CKAP1	5,0	down	cytoskeleton associated protein 1
244312_at	AFTIPHILIN	5,0	up	Aftiphilin protein
203968_s_at	CDC6	5,0	down	CDC6 cell division cycle 6 homolog (S, cerevisiae)
202181_at	KIAA0247	5,0	up	KIAA0247
220172_at	FLJ13096	5,0	up	hypothetical protein FLJ13096
202111_at	SLC4A2	5,0	down	solute carrier family 4, anion exchanger, member 2 (erythrocyte membrane protein band 3-like 1)
217761_at	MTCBP-1	5,0	up	membrane-type 1 matrix metalloproteinase cytoplasmic tail binding protein-1
49111_at		5,0	up	MRNA; cDNA DKFZp762M127 (from clone DKFZp762M127)
201510_at	ELF3	5,0	up	E74-like factor 3 (ets domain transcription factor, epithelial-specific)
227787_s_at	THRAP6	5,0	down	thyroid hormone receptor associated protein 6
209199_s_at	MEF2C	5,0	down	MADS box transcription enhancer factor 2, polypeptide C (myocyte enhancer factor 2C)
234192_s_at	GKAP1	5,0	up	G kinase anchoring protein 1
203086_at	KIF2	5,0	down	Kinesin heavy chain member 2
229202_at	PCNXL2	5,0	up	Pecanex-like 2 (Drosophila)
44040_at	FBXO41	5,0	up	F-box protein 41
225342_at	AK3L1	5,0	up	adenylate kinase 3-like 1
236545_at	PPP3CA	5,0	up	Protein phosphatase 3 (formerly 2B), catalytic subunit, alpha isoform (calcineurin A alpha)
220161_s_at	EPB41L4B	5,0	up	erythrocyte membrane protein band 4,1 like 4B
225051_at	EPB41	5,0	up	erythrocyte membrane protein band 4,1 (elliptocytosis 1, RH-linked)
205414_s_at	KIAA0672	4,9	up	KIAA0672 gene product
212508_at	MOAP1	4,9	up	modulator of apoptosis 1
231866_at	LNPEP	4,9	up	leucyl/cystinyl aminopeptidase
218172_s_at	DERL1	4,9	down	Der1-like domain family, member 1
1559410_at		4,9	up	Transcribed locus
203180_at	ALDH1A3	4,9	up	aldehyde dehydrogenase 1 family, member A3
202307_s_at	TAP1	4,9	up	transporter 1, ATP-binding cassette, sub-family B (MDR/TAP)
226003_at	KIF21A	4,9	up	kinesin family member 21A
32094_at	CHST3	4,9	up	carbohydrate (chondroitin 6) sulfotransferase 3
229546_at	FAM84A	4,9	up	family with sequence similarity 84, member A
218796_at	C20orf42	4,9	up	chromosome 20 open reading frame 42
230021_at	MGC45866	4,9	down	leucine-rich repeat kinase 1
1557293_at	LOC440993	4,9	up	hypothetical gene supported by AK128346
218532_s_at	FLJ20152	4,9	up	hypothetical protein FLJ20152
211548_s_at	HPGD	4,9	up	hydroxyprostaglandin dehydrogenase 15-(NAD)
222996_s_at	CXXC5	4,9	up	CXXC finger 5
232060_at		4,9	up	Full-length cDNA clone CS0DD009YB17 of Neuroblastoma Cot 50-normalized of Homo sapiens (human)
213317_at	CLIC5	4,9	up	Chloride intracellular channel 5
204331_s_at	MRPS12	4,9	down	mitochondrial ribosomal protein S12
212925_at	C19orf21	4,8	down	chromosome 19 open reading frame 21

218510_x_at	FLJ20152	4,8	up	hypothetical protein FLJ20152
214833_at	TMEM63A	4,8	up	transmembrane protein 63A
209600_s_at	ACOX1	4,8	up	acyl-Coenzyme A oxidase 1, palmitoyl
234723_x_at		4,8	up	CDNA: FLJ21228 fis, clone COL00739
214356_s_at	KIAA0368	4,8	up	KIAA0368
209709_s_at	HMMR	4,8	down	hyaluronan-mediated motility receptor (RHAMM)
1556060_a_at	KIAA1702	4,8	up	KIAA1702 protein
231944_at	ERO1LB	4,8	up	ERO1-like beta (S, cerevisiae)
218001_at	MRPS2	4,8	down	mitochondrial ribosomal protein S2
208581_x_at	MT1X	4,8	up	metallothionein 1X
214765_s_at	ASAHL	4,8	up	N-acylsphingosine amidohydrolase (acid ceramidase)-like
235072_s_at		4,8	up	Transcribed locus
1560318_at	ARHGAP29	4,8	up	Rho GTPase activating protein 29
226794_at	STXBP5	4,8	up	syntaxin binding protein 5 (tomosyn)
235147_at	LOC440928	4,8	down	hypothetical gene supported by AK096649
203798_s_at	VSNL1	4,8	up	visinin-like 1
1569868_s_at	EME2	4,8	up	Essential meiotic endonuclease 1 homolog 2 (S, pombe)
219322_s_at	WDR8	4,7	up	WD repeat domain 8
218319_at	PELL1	4,7	down	pellino homolog 1 (Drosophila)
226868_at	LOC283464	4,7	up	hypothetical protein LOC283464
219041_s_at	REPIN1	4,7	up	replication initiator 1
212081_x_at	BAT2	4,7	down	HLA-B associated transcript 2
203418_at	CCNA2	4,7	down	cyclin A2
39248_at	AQP3	4,7	up	aquaporin 3
241956_at	PCGF5	4,7	up	Polycomb group ring finger 5
221587_s_at	C19orf24	4,7	down	chromosome 19 open reading frame 24
229231_at	LRRRC37B	4,7	up	leucine rich repeat containing 37B
1555888_at	EDD	4,7	up	E3 ubiquitin protein ligase, HECT domain containing, 1
217811_at	SELT	4,7	down	selenoprotein T
1557918_s_at	SLC16A1	4,7	down	solute carrier family 16 (monocarboxylic acid transporters), member 1
225707_at	ARL6IP6	4,7	down	ADP-ribosylation-like factor 6 interacting protein 6
231183_s_at	JAG1	4,7	up	Jagged 1 (Alagille syndrome)
218501_at	ARHGEF3	4,7	up	Rho guanine nucleotide exchange factor (GEF) 3
203845_at	PCAF	4,7	up	p300/CBP-associated factor
212320_at	TUBB	4,7	down	tubulin, beta polypeptide
227475_at	FOXQ1	4,7	up	forkhead box Q1
229498_at		4,7	up	MRNA; cDNA DKFZp779M2422 (from clone DKFZp779M2422)
213757_at	EIF5A	4,7	up	Eukaryotic translation initiation factor 5A
202606_s_at	TLK1	4,7	down	tousled-like kinase 1
204106_at	TESK1	4,7	up	testis-specific kinase 1
43511_s_at		4,7	up	MRNA; cDNA DKFZp762M127 (from clone DKFZp762M127)
219493_at	SHCBP1	4,6	down	SHC SH2-domain binding protein 1
222077_s_at	RACGAP1	4,6	down	Rac GTPase activating protein 1
217122_s_at	SLC35E2	4,6	down	solute carrier family 35, member E2
201963_at	ACSL1	4,6	up	acyl-CoA synthetase long-chain family member 1
225525_at	KIAA1671	4,6	up	KIAA1671 protein
223315_at	NTN4	4,6	up	netrin 4
202149_at	NEDD9	4,6	up	neural precursor cell expressed, developmentally down-regulated 9
214124_x_at	FGFR1OP	4,6	up	FGFR1 oncogene partner
212731_at	ANKRD46	4,6	up	ankyrin repeat domain 46
211759_x_at	CKAP1	4,6	down	cytoskeleton associated protein 1 /// cytoskeleton associated protein 1
204962_s_at	CENPA	4,6	down	centromere protein A, 17kDa
218421_at	CERK	4,6	up	ceramide kinase
212754_s_at	KIAA1040	4,6	up	KIAA1040 protein
218875_s_at	FBXO5	4,6	down	F-box protein 5
202107_s_at	MCM2	4,6	down	MCM2 minichromosome maintenance deficient 2, mitotin (S, cerevisiae)
205981_s_at	ING2	4,6	up	inhibitor of growth family, member 2
216252_x_at	FAS	4,6	up	Fas (TNF receptor superfamily, member 6)
239791_at	HOXB6	4,6	down	Homeo box B6
228846_at	MXD1	4,6	up	MAX dimerization protein 1
236646_at	FLJ31166	4,6	down	hypothetical protein FLJ31166
224912_at	TTC7A	4,6	up	tetratricopeptide repeat domain 7A
218036_x_at	NMD3	4,6	down	NMD3 homolog (S, cerevisiae)
41644_at	SASH1	4,6	up	SAM and SH3 domain containing 1
226803_at	CHMP4C	4,6	up	chromatin modifying protein 4C
209891_at	SPBC25	4,6	down	spindle pole body component 25 homolog (S, cerevisiae)
221692_s_at	MRPL34	4,6	down	mitochondrial ribosomal protein L34 /// mitochondrial ribosomal protein L34
202894_at	EPHB4	4,5	up	EPH receptor B4
214126_at	MCART1	4,5	up	Mitochondrial carrier triple repeat 1
219544_at	FLJ22624	4,5	down	FLJ22624 protein
219502_at	NEIL3	4,5	down	nei endonuclease VIII-like 3 (E, coli)
226352_at	JMY	4,5	up	Junction-mediating and regulatory protein
203650_at	PROCR	4,5	up	protein C receptor, endothelial (EPCR)
1565886_at	TRPM7	4,5	up	Transient receptor potential cation channel, subfamily M, member 7
227607_at	AMSH-LP	4,5	down	associated molecule with the SH3 domain of STAM (AMSH) like protein
225998_at	GAB1	4,5	up	GRB2-associated binding protein 1
202183_s_at	KIF22	4,5	down	kinesin family member 22
217850_at	GNL3	4,5	down	guanine nucleotide binding protein-like 3 (nucleolar)
209259_s_at	CSPG6	4,5	down	chondroitin sulfate proteoglycan 6 (bamacan)
235331_x_at	PCGF5	4,5	up	polycomb group ring finger 5
204603_at	EXO1	4,5	down	exonuclease 1

212873_at	HA-1	4,5	up	minor histocompatibility antigen HA-1
226980_at	DEPDC1B	4,5	down	DEP domain containing 1B
200892_s_at	SFRS10	4,5	down	splicing factor, arginine/serine-rich 10 (transformer 2 homolog, Drosophila)
208765_s_at	HNRPR	4,5	down	heterogeneous nuclear ribonucleoprotein R
209802_at	PHLDA2	4,5	up	pleckstrin homology-like domain, family A, member 2
228638_at	MGC34648	4,5	up	Family with sequence similarity 76, member A
214086_s_at	PARP2	4,5	down	poly (ADP-ribose) polymerase family, member 2
209357_at	CITED2	4,5	up	Cbp/p300-interacting transactivator, with Glu/Asp-rich carboxy-terminal domain, 2
202531_at	IRF1	4,5	up	interferon regulatory factor 1
228523_at	NANOS1	4,5	up	nanos homolog 1 (Drosophila)
214696_at	MGC14376	4,5	up	hypothetical protein MGC14376
229644_at	PREP	4,5	up	Prolyl endopeptidase
203367_at	DUSP14	4,5	up	dual specificity phosphatase 14
210317_s_at	YWHAE	4,5	down	tyrosine 3-monooxygenase/tryptophan 5-monooxygenase activation protein, epsilon polypeptide
203492_x_at	PIG8	4,5	down	translokain
203310_at	STXBP3	4,5	up	syntaxin binding protein 3
230503_at		4,5	up	Transcribed locus
218456_at	C1QDC1	4,4	up	C1q domain containing 1
207318_s_at	CDC2L5	4,4	up	cell division cycle 2-like 5 (cholinesterase-related cell division controller)
226245_at	KCTD1	4,4	up	potassium channel tetramerisation domain containing 1
233496_s_at	CFL2	4,4	down	cofilin 2 (muscle)
201933_at	PCOLN3	4,4	down	procollagen (type III) N-endopeptidase
213139_at	SNAI2	4,4	up	snail homolog 2 (Drosophila)
204797_s_at	EML1	4,4	up	echinoderm microtubule associated protein like 1
231764_at	CHRAC1	4,4	down	chromatin accessibility complex 1
225897_at	MARCKS	4,4	down	Myristoylated alanine-rich protein kinase C substrate
201388_at	PSMD3	4,4	down	proteasome (prosome, macropain) 26S subunit, non-ATPase, 3
222998_at	MAF1	4,4	down	MAF1 homolog (S, cerevisiae)
226649_at	PANK1	4,4	up	pantothenate kinase 1
229223_at	NFATC3	4,4	up	Nuclear factor of activated T-cells, cytoplasmic, calcineurin-dependent 3
201673_s_at	GYS1	4,4	down	glycogen synthase 1 (muscle)
227135_at	ASAHL	4,4	up	N-acylsphingosine amidohydrolase (acid ceramidase)-like
231011_at	FLJ10378	4,4	up	La ribonucleoprotein domain family, member 2
220295_x_at	DEPDC1	4,4	down	DEP domain containing 1
213478_at	KIAA1026	4,4	up	kazrin
1568619_s_at	LOC162073	4,4	up	Hypothetical protein LOC162073
221014_s_at	RAB33B	4,4	up	RAB33B, member RAS oncogene family /// RAB33B, member RAS oncogene family
202446_s_at	PLSCR1	4,4	down	phospholipid scramblase 1
209862_s_at	PIG8	4,4	down	translokain
225622_at	PAG1	4,4	up	phosphoprotein associated with glycosphingolipid microdomains 1
203087_s_at	KIF2	4,4	down	kinesin heavy chain member 2
242225_at	KIAA1040	4,4	up	KIAA1040 protein
228520_s_at	APLP2	4,4	up	Amyloid beta (A4) precursor-like protein 2
204030_s_at	SCHIP1	4,3	up	schwannomin interacting protein 1
227049_at	ZADH2	4,3	up	zinc binding alcohol dehydrogenase, domain containing 2
212560_at	C11orf32	4,3	up	chromosome 11 open reading frame 32
226496_at	ZCCHC7	4,3	down	zinc finger, CCHC domain containing 7
215719_x_at	FAS	4,3	up	Fas (TNF receptor superfamily, member 6)
244287_at	SFRS12	4,3	down	splicing factor, arginine/serine-rich 12
225373_at	C10orf54	4,3	up	chromosome 10 open reading frame 54
230179_at	LOC285812	4,3	up	hypothetical protein LOC285812
214484_s_at	OPRS1	4,3	down	opioid receptor, sigma 1
204527_at	MYO5A	4,3	up	myosin VA (heavy polypeptide 12, myosin)
207319_s_at	CDC2L5	4,3	up	cell division cycle 2-like 5 (cholinesterase-related cell division controller)
226178_at	SOCS4	4,3	up	suppressor of cytokine signaling 4
227761_at	MYO5A	4,3	up	myosin VA (heavy polypeptide 12, myosin)
238513_at	PRRG4	4,3	up	Proline rich Gla (G-carboxyglutamic acid) 4 (transmembrane)
202318_s_at	SENPE6	4,3	up	SUMO1/sentrin specific peptidase 6
209092_s_at	C17orf25	4,3	down	chromosome 17 open reading frame 25
225176_at		4,3	up	MSTP146 (MST146)
228559_at		4,3	down	CDNA clone IMAGE:6043059
224663_s_at	CFL2	4,3	down	cofilin 2 (muscle)
202656_s_at	SERTAD2	4,3	up	SERTA domain containing 2
204781_s_at	FAS	4,3	up	Fas (TNF receptor superfamily, member 6)
200704_at	LITAF	4,3	up	lipopolysaccharide-induced TNF factor
229194_at	PCGF5	4,3	up	polycomb group ring finger 5
203914_x_at	HPGD	4,3	up	hydroxyprostaglandin dehydrogenase 15-(NAD)
226873_at	KIAA1164	4,3	up	Family with sequence similarity 63, member B
210407_at	PPM1A	4,3	up	protein phosphatase 1A (formerly 2C), magnesium-dependent, alpha isoform
224413_s_at	TM2D2	4,3	down	TM2 domain containing 2 /// TM2 domain containing 2
202257_s_at	CD2BP2	4,3	down	CD2 antigen (cytoplasmic tail) binding protein 2
217551_at	LOC441453	4,3	up	similar to olfactory receptor, family 7, subfamily A, member 17
210764_s_at	CYR61	4,3	down	cysteine-rich, angiogenic inducer, 61
201692_at	OPRS1	4,3	down	opioid receptor, sigma 1
219001_s_at	WDR32	4,3	up	WD repeat domain 32
212185_x_at	MT2A	4,3	up	metallothionein 2A
228468_at	MASTL	4,2	down	microtubule associated serine/threonine kinase-like
212367_at	FEM1B	4,2	up	fem-1 homolog b (C, elegans)
203023_at	HSPC111	4,2	down	hypothetical protein HSPC111
216511_s_at	TCF7L2	4,2	down	transcription factor 7-like 2 (T-cell specific, HMG-box)
238846_at	TNFRSF11A	4,2	up	tumor necrosis factor receptor superfamily, member 11a, NFkB activator

227528_s_at	MLL2	4,2	down	myeloid/lymphoid or mixed-lineage leukemia 2
1565269_s_at	ATF1	4,2	down	activating transcription factor 1
224826_at	KIAA1434	4,2	up	hypothetical protein KIAA1434
207165_at	HMMR	4,2	down	hyaluronan-mediated motility receptor (RHAMM)
200990_at	TRIM28	4,2	down	tripartite motif-containing 28
214684_at	MEF2A	4,2	up	MADS box transcription enhancer factor 2, polypeptide A (myocyte enhancer factor 2A)
237465_at	LOC401151	4,2	up	hypothetical gene supported by BC062741
227036_at		4,2	up	Transcribed locus
228108_at		4,2	up	CDNA FLJ30761 fis, clone FEBRA2000538
220007_at	FLJ13984	4,2	up	hypothetical protein FLJ13984
212552_at	HPCAL1	4,2	up	hippocalcin-like 1
225808_at	LOC124512	4,2	down	Hypothetical protein LOC124512
208808_s_at	HMGB2	4,2	down	high-mobility group box 2
228106_at	FLJ20280	4,2	down	hypothetical protein FLJ20280
202530_at	MAPK14	4,2	up	mitogen-activated protein kinase 14
209464_at	AURKB	4,2	down	aurora kinase B
219911_s_at	SLCO4A1	4,2	up	solute carrier organic anion transporter family, member 4A1
209258_s_at	CSPG6	4,2	down	chondroitin sulfate proteoglycan 6 (bamacan)
226447_at	ASH1L	4,2	up	POU domain, class 6, transcription factor 1
212063_at	CD44	4,2	up	CD44 antigen (homing function and Indian blood group system)
210649_s_at	ARID1A	4,2	down	AT rich interactive domain 1A (SWI-like)
224452_s_at	MGC12966	4,2	up	hypothetical protein MGC12966 /// hypothetical protein MGC12966
200900_s_at	M6PR	4,2	down	mannose-6-phosphate receptor (cation dependent)
1554038_at	LARP2	4,2	up	La ribonucleoprotein domain family, member 2
224606_at	KLF6	4,2	down	Kruppel-like factor 6
230559_x_at	FGD4	4,2	up	FYVE, RhoGEF and PH domain containing 4
209295_at	TNFRSF10B	4,2	up	tumor necrosis factor receptor superfamily, member 10b
1555780_a_at	RHEB	4,2	down	Ras homolog enriched in brain
227123_at	RAB3B	4,2	up	RAB3B, member RAS oncogene family
203564_at	FANCG	4,2	down	Fanconi anemia, complementation group G
91684_g_at	EXOSC4	4,2	down	exosome component 4
202006_at	PTPN12	4,2	down	protein tyrosine phosphatase, non-receptor type 12
213880_at	LGR5	4,2	down	leucine-rich repeat-containing G protein-coupled receptor 5
227569_at	LNX2	4,2	up	ligand of numb-protein X 2
227143_s_at	BID	4,2	up	BH3 interacting domain death agonist
242245_at	FLJ13815	4,2	up	Synapse defective 1, Rho GTPase, homolog 2 (C, elegans)
223286_at	DERP6	4,2	down	S-phase 2 protein
224944_at	TMPO	4,2	down	Thymopoietin
227146_at	QSCN6L1	4,2	up	quiescin Q6-like 1
205195_at	AP1S1	4,2	down	adaptor-related protein complex 1, sigma 1 subunit
226685_at	SNTB2	4,2	up	Syntrophin, beta 2 (dystrophin-associated protein A1, 59kDa, basic component 2)
223895_s_at	EPN3	4,1	up	epsin 3
236248_x_at	MGC21874	4,1	up	transcriptional adaptor 2 (ADA2 homolog, yeast)-beta
201236_s_at	BTG2	4,1	up	BTG family, member 2
214429_at	MTMR6	4,1	up	myotubularin related protein 6
229265_at	DRPLA	4,1	up	Atrophia 1
219787_s_at	ECT2	4,1	down	epithelial cell transforming sequence 2 oncogene
211429_s_at	SERPINA1	4,1	up	serpin peptidase inhibitor, clade A (alpha-1 antiproteinase, antitrypsin), member 1
222039_at	LOC146909	4,1	down	hypothetical protein LOC146909
212240_s_at	PIK3R1	4,1	up	phosphoinositide-3-kinase, regulatory subunit 1 (p85 alpha)
223018_at	NOB1P	4,1	down	nin one binding protein
225060_at	LRP11	4,1	up	low density lipoprotein receptor-related protein 11
235299_at		4,1	up	troglydotes]
202600_s_at	NRIP1	4,1	up	nuclear receptor interacting protein 1
202727_s_at	IFNGR1	4,1	down	interferon gamma receptor 1
225807_at	JUB	4,1	up	jub, ajuba homolog (Xenopus laevis)
212870_at	RASSF3	4,1	up	Ras association (RalGDS/AF-6) domain family 3
218360_at	RAB22A	4,1	down	RAB22A, member RAS oncogene family
217640_x_at	C18orf24	4,1	down	chromosome 18 open reading frame 24
219539_at	GEMIN6	4,1	down	gem (nuclear organelle) associated protein 6
229886_at	FLJ32363	4,1	down	FLJ32363 protein
208436_s_at	IRF7	4,1	up	interferon regulatory factor 7
225144_at	BMPR2	4,1	up	bone morphogenetic protein receptor, type II (serine/threonine kinase)
212211_at	ANKRD17	4,1	down	ankyrin repeat domain 17
32137_at	JAG2	4,1	up	jagged 2
1554486_a_at	C6orf114	4,1	up	chromosome 6 open reading frame 114
218491_s_at	THY28	4,1	down	thymocyte protein thy28
36566_at	CTNS	4,1	down	cystinosis, nephropathic
203016_s_at	SSX2IP	4,0	down	synovial sarcoma, X breakpoint 2 interacting protein
223758_s_at	GTF2H2	4,0	down	general transcription factor IIH, polypeptide 2, 44kDa
235065_at		4,0	up	Transcribed locus
227481_at	CNKSR3	4,0	up	CNKSR family member 3
1554667_s_at	FLJ13984	4,0	up	hypothetical protein FLJ13984
1554026_a_at	MYO10	4,0	up	Myosin X
233888_s_at	SRGAP1	4,0	up	SLIT-ROBO Rho GTPase activating protein 1
219099_at	C12orf5	4,0	up	chromosome 12 open reading frame 5
203175_at	RHOG	4,0	down	ras homolog gene family, member G (rho G)
201087_at	PXN	4,0	down	paxillin
1555278_a_at	CKAP5	4,0	down	cytoskeleton associated protein 5
219922_s_at	LTBP3	4,0	up	latent transforming growth factor beta binding protein 3
226534_at	KITLG	4,0	up	KIT ligand

204278_s_at	EBAG9	4,0	down	estrogen receptor binding site associated, antigen, 9
225237_s_at	MSI2	4,0	down	musashi homolog 2 (Drosophila)
229908_s_at	GNPTG	4,0	up	N-acetylglucosamine-1-phosphate transferase, gamma subunit
235092_at	KCTD1	4,0	up	Cytokine induced apoptosis inhibitor 1
223279_s_at	UACA	4,0	down	uveal autoantigen with coiled-coil domains and ankyrin repeats
225618_at	ARHGAP27	4,0	up	Rho GTPase activating protein 27
207574_s_at	GADD45B	4,0	up	growth arrest and DNA-damage-inducible, beta
214435_x_at	RALA	4,0	up	v-ral simian leukemia viral oncogene homolog A (ras related)
226464_at	MGC33365	4,0	up	hypothetical protein MGC33365
219978_s_at	NUSAP1	4,0	down	nucleolar and spindle associated protein 1
213358_at	KIAA0802	4,0	up	KIAA0802
222667_s_at	ASH1L	4,0	up	ash1 (absent, small, or homeotic)-like (Drosophila)
201489_at	PIIF	4,0	down	peptidylprolyl isomerase F (cyclophilin F)
223250_at	KLHL7	4,0	up	kelch-like 7 (Drosophila)
239412_at	IRF5	4,0	up	interferon regulatory factor 5
238057_at	USP45	4,0	down	ubiquitin specific peptidase 45
227105_at	CSPP1	4,0	down	centrosome and spindle pole associated protein 1
227396_at		4,0	up	Homo sapiens, clone IMAGE:4454331, mRNA
204868_at	ICT1	4,0	down	immature colon carcinoma transcript 1
225806_at	JUB	4,0	up	jub, ajuba homolog (Xenopus laevis)
209296_at	PPM1B	4,0	down	protein phosphatase 1B (formerly 2C), magnesium-dependent, beta isoform
213353_at	ABCA5	4,0	up	ATP-binding cassette, sub-family A (ABC1), member 5
213341_at	FEM1C	4,0	up	fem-1 homolog c (C.elegans)
225976_at	BTF3L4	4,0	down	basic transcription factor 3-like 4
227200_at		4,0	up	Transcribed locus
1553113_s_at	CDK8	4,0	up	Cyclin-dependent kinase 8
45633_at	FLJ13912	4,0	down	hypothetical protein FLJ13912
226416_at	THEX1	4,0	down	three prime histone mRNA exonuclease 1
234929_s_at	SPATA7	4,0	up	spermatogenesis associated 7
226633_at	RAB8B	4,0	down	RAB8B, member RAS oncogene family
219717_at	FLJ20280	4,0	down	hypothetical protein FLJ20280
213225_at	PPM1B	3,9	down	protein phosphatase 1B (formerly 2C), magnesium-dependent, beta isoform
205548_s_at	BTG3	3,9	down	BTG family, member 3
243780_at		3,9	up	CDNA FLJ46553 fis, clone THYMU3038879
225287_s_at	TMEM55B	3,9	down	transmembrane protein 55B
224395_s_at	RNF7	3,9	down	ring finger protein 7 /// ring finger protein 7
1554345_a_at	FLJ20125	3,9	down	hypothetical protein FLJ20125
201578_at	PODXL	3,9	up	podocalyxin-like
223427_s_at	EPB41L4B	3,9	up	erythrocyte membrane protein band 4,1 like 4B
228255_at	ALS2CR4	3,9	up	amyotrophic lateral sclerosis 2 (juvenile) chromosome region, candidate 4
213140_s_at	SS18L1	3,9	up	synovial sarcoma translocation gene on chromosome 18-like 1
227665_at	MCART1	3,9	up	Mitochondrial carrier triple repeat 1
203574_at	NFIL3	3,9	up	nuclear factor, interleukin 3 regulated
228145_s_at	ZNF398	3,9	up	zinc finger protein 398
218607_s_at	SDAD1	3,9	down	SDA1 domain containing 1
234991_at	MGC11349	3,9	up	ZXD family zinc finger C
219344_at	SLC29A3	3,9	up	solute carrier family 29 (nucleoside transporters), member 3
228297_at	CNN3	3,9	up	Calponin 3, acidic
235924_at		3,9	up	CDNA FLJ42287 fis, clone TLIVE2005866
227247_at	PLEKHA8	3,9	up	Pleckstrin homology domain containing, family A (phosphoinositide binding specific) member 8
201756_at	RPA2	3,9	down	replication protein A2, 32kDa
236001_at	LOC400573	3,9	up	hypothetical gene supported by BC015790; BC041634
224644_at		3,9	down	CDNA clone IMAGE:5278517
209529_at	PPAP2C	3,9	down	phosphatidic acid phosphatase type 2C
204778_x_at	HOXB7	3,9	down	homeo box B7
218769_s_at	ANKRA2	3,9	up	ankyrin repeat, family A (RFXANK-like), 2
201617_x_at	CALD1	3,9	up	caldesmon 1
55692_at	ELMO2	3,9	up	engulfment and cell motility 2 (ced-12 homolog, C, elegans)
214011_s_at	HSPC111	3,9	down	hypothetical protein HSPC111
209218_at	SQLE	3,9	down	squalene epoxidase
227897_at	RAP2B	3,9	up	RAP2B, member of RAS oncogene family
1561908_a_at	HS3ST3B1	3,9	up	Hypothetical protein MGC12916
224571_at	IRF2BP2	3,9	up	interferon regulatory factor 2 binding protein 2
229377_at	GRTP1	3,9	up	Growth hormone regulated TBC protein 1
225524_at	ANTXR2	3,9	up	anthrax toxin receptor 2
41037_at	TEAD4	3,9	down	TEA domain family member 4
225049_at	BLOC1S2	3,9	up	biogenesis of lysosome-related organelles complex-1, subunit 2
204822_at	TTK	3,9	down	TTK protein kinase
207431_s_at	DEGS1	3,9	down	degenerative spermatocyte homolog 1, lipid desaturase (Drosophila)
204667_at	FOXA1	3,9	down	forkhead box A1
224823_at	MYLK	3,9	up	myosin, light polypeptide kinase
203694_s_at	DHX16	3,9	down	DEAH (Asp-Glu-Ala-His) box polypeptide 16
235023_at	VPS13C	3,9	up	Vacuolar protein sorting 13C (yeast)
227286_at	FLJ90652	3,9	down	hypothetical protein FLJ90652
202724_s_at	FOXO1A	3,9	up	forkhead box O1A (rhabdomyosarcoma)
203156_at	AKAP11	3,9	down	A kinase (PRKA) anchor protein 11
205895_s_at	NOLC1	3,9	down	nucleolar and coiled-body phosphoprotein 1
218898_at	FAM57A	3,9	down	family with sequence similarity 57, member A
225611_at	MAST4	3,9	up	microtubule associated serine/threonine kinase family member 4
224819_at	TCEAL8	3,8	down	transcription elongation factor A (SII)-like 8
212675_s_at	KIAA0582	3,8	up	KIAA0582

201564_s_at	FSCN1	3,8	up	fascin homolog 1, actin-bundling protein (<i>Strongylocentrotus purpuratus</i>)
215204_at	SENP6	3,8	up	SUMO1/sentrin specific peptidase 6
219575_s_at	COG8	3,8	down	peptide deformylase-like protein /// component of oligomeric golgi complex 8
225022_at	GOPC	3,8	down	golgi associated PDZ and coiled-coil motif containing
203216_s_at	MYO6	3,8	up	myosin VI
215128_at		3,8	up	CDNA FLJ11682 fis, clone HEMBA1004880
212021_s_at	MKI67	3,8	down	antigen identified by monoclonal antibody Ki-67
222680_s_at	DTL	3,8	down	denticleless homolog (<i>Drosophila</i>)
202609_at	EPS8	3,8	up	epidermal growth factor receptor pathway substrate 8
212832_s_at	CKAP5	3,8	down	cytoskeleton associated protein 5
235410_at	NPHP3	3,8	up	nephronophthisis 3 (adolescent)
226551_at	RIPK1	3,8	up	receptor (TNFRSF)-interacting serine-threonine kinase 1
211997_x_at	H3F3B	3,8	down	H3 histone, family 3B (H3,3B)
213330_s_at	STIP1	3,8	down	stress-induced-phosphoprotein 1 (Hsp70/Hsp90-organizing protein)
212030_at	RBM25	3,8	down	RNA binding motif protein 25
227728_at	PPM1A	3,8	up	Protein phosphatase 1A (formerly 2C), magnesium-dependent, alpha isoform
1558761_a_at	C9orf100S	3,8	up	chromosome 9 open reading frame 10 opposite strand
200998_s_at	CKAP4	3,8	down	cytoskeleton-associated protein 4
206020_at	SOCS6	3,8	up	suppressor of cytokine signaling 6
1558834_s_at	C1orf62	3,8	up	chromosome 1 open reading frame 62
225282_at	SMAP1L	3,8	up	stromal membrane-associated protein 1-like
218205_s_at	MKNK2	3,8	up	MAP kinase interacting serine/threonine kinase 2
226290_at	BDP1	3,8	up	B double prime 1, subunit of RNA polymerase III transcription initiation factor IIIB
1558710_at	ARIH1	3,8	up	Ariadne homolog, ubiquitin-conjugating enzyme E2 binding protein, 1 (<i>Drosophila</i>)
241769_at	ITGAV	3,8	up	Integrin, alpha V (vitronectin receptor, alpha polypeptide, antigen CD51)
213149_at	DLAT	3,8	down	dihydrolipoamide S-acetyltransferase (E2 component of pyruvate dehydrogenase complex)
214723_x_at	KIAA1641	3,8	up	KIAA1641
219988_s_at	C1orf164	3,8	down	chromosome 1 open reading frame 164
201993_x_at	HNRPDL	3,8	down	heterogeneous nuclear ribonucleoprotein D-like
36711_at	MAFF	3,8	up	v-maf musculoaponeurotic fibrosarcoma oncogene homolog F (avian)
213342_at	YAP1	3,8	up	Yes-associated protein 1, 65kDa
213649_at	SFRS7	3,8	down	splicing factor, arginine/serine-rich 7, 35kDa
223358_s_at	PDE7A	3,8	up	Phosphodiesterase 7A
222622_at	LOC283871	3,8	down	hypothetical protein LOC283871
229551_x_at	ZNF367	3,8	up	zinc finger protein 367
228454_at	MLR2	3,8	up	ligand-dependent corepressor
221779_at	MICAL-L1	3,8	up	MICAL-like 1
224896_s_at	TTL	3,8	up	tubulin tyrosine ligase
204252_at	CDK2	3,8	down	cyclin-dependent kinase 2
209179_s_at	LENG4	3,8	down	leukocyte receptor cluster (LRC) member 4
233849_s_at	ARHGAP5	3,8	down	Rho GTPase activating protein 5
60474_at	C20orf42	3,8	up	chromosome 20 open reading frame 42
215785_s_at	CYFIP2	3,8	up	cytoplasmic FMR1 interacting protein 2
227318_at		3,8	up	MRNA; cDNA DKFZp547G036 (from clone DKFZp547G036)
201772_at	AZIN1	3,8	down	antizyme inhibitor 1
201875_s_at	MPZL1	3,8	down	myelin protein zero-like 1
240633_at	FLJ33718	3,8	up	hypothetical protein FLJ33718
203493_s_at	PIG8	3,8	down	translokoin
202094_at	BIRC5	3,8	down	baculoviral IAP repeat-containing 5 (survivin)
220237_at	ATG3	3,8	up	ATG3 autophagy related 3 homolog (S, cerevisiae)
203225_s_at	RFK	3,8	up	riboflavin kinase
227087_at	INPP4A	3,8	up	Inositol polyphosphate-4-phosphatase, type I, 107kDa
227280_s_at	FLJ40432	3,8	up	Hypothetical protein FLJ40432
218951_s_at	PLCXD1	3,8	up	phosphatidylinositol-specific phospholipase C, X domain containing 1
227943_at	HIST2H2AA	3,8	up	Histone 2, H2aa
206662_at	GLRX	3,8	down	glutaredoxin (thioltransferase)
219654_at	PTPLA	3,8	up	protein tyrosine phosphatase-like (proline instead of catalytic arginine), member a
201912_s_at	GSPT1	3,7	down	G1 to S phase transition 1 /// G1 to S phase transition 1
204176_at	KLHL20	3,7	up	kelch-like 20 (<i>Drosophila</i>)
204045_at	TCEAL1	3,7	down	transcription elongation factor A (SII)-like 1
222108_at	AMIGO2	3,7	down	adhesion molecule with Ig-like domain 2
218088_s_at	RRAGC	3,7	up	Ras-related GTP binding C
227720_at	ANKRD13B	3,7	up	ankyrin repeat domain 13B
222173_s_at	TBC1D2	3,7	up	TBC1 domain family, member 2
202261_at	VPS72	3,7	down	vacuolar protein sorting 72 (yeast)
209920_at	BMPR2	3,7	up	bone morphogenetic protein receptor, type II (serine/threonine kinase)
218008_at	FLJ10099	3,7	down	hypothetical protein FLJ10099
218138_at	MKKS	3,7	down	McKusick-Kaufman syndrome
225094_at	SET8	3,7	up	PR/SET domain containing protein 8
242241_x_at		3,7	up	Transcribed locus
207291_at	PRRG4	3,7	up	proline rich Gla (G-carboxyglutamic acid) 4 (transmembrane)
209792_s_at	KLK10	3,7	down	kallikrein 10
201225_s_at	SRRM1	3,7	down	serine/arginine repetitive matrix 1
232890_at		3,7	up	
1553764_a_at	JUB	3,7	up	jub, ajuba homolog (<i>Xenopus laevis</i>)
201694_s_at	EGR1	3,7	up	early growth response 1
228033_at	E2F7	3,7	up	E2F transcription factor 7
215954_s_at	C19orf29	3,7	down	chromosome 19 open reading frame 29
201976_s_at	MYO10	3,7	up	myosin X
218105_s_at	MRPL4	3,7	down	mitochondrial ribosomal protein L4
235952_at		3,7	up	Transcribed locus

208842_s_at	GORASP2	3,7	down	golgi reassembly stacking protein 2, 55kDa
219215_s_at	SLC39A4	3,7	down	solute carrier family 39 (zinc transporter), member 4
232451_at		3,7	up	MRNA; cDNA DKFZp564I0816 (from clone DKFZp564I0816)
1557240_a_at	BBX	3,7	up	Bobby sox homolog (Drosophila)
232209_x_at	HM13	3,7	down	histocompatibility (minor) 13
211947_s_at	BAT2D1	3,7	down	BAT2 domain containing 1
225889_at	AEBP2	3,7	down	AE binding protein 2
227484_at		3,7	up	CDNA FLJ41690 fis, clone HCASM2009405
220386_s_at	EML4	3,7	down	echinoderm microtubule associated protein like 4
226399_at	FLJ14281	3,7	up	DnaJ (Hsp40) homolog, subfamily B, member 14
228754_at	SLC6A6	3,7	up	solute carrier family 6 (neurotransmitter transporter, taurine), member 6
202351_at	ITGAV	3,7	up	integrin, alpha V (vitronectin receptor, alpha polypeptide, antigen CD51)
221538_s_at	PLXNA1	3,7	up	plexin A1
209762_x_at	SP110	3,7	up	SP110 nuclear body protein
219221_at	ZBTB38	3,7	up	zinc finger and BTB domain containing 38
37028_at	PPP1R15A	3,7	down	protein phosphatase 1, regulatory (inhibitor) subunit 15A
214790_at	SENP6	3,7	up	SUMO1/sentrin specific peptidase 6
201880_at	ARIH1	3,7	up	Ariadne homolog, ubiquitin-conjugating enzyme E2 binding protein, 1 (Drosophila)
212708_at	LOC339287	3,7	down	hypothetical protein LOC339287
217821_s_at	WBP11	3,7	down	WW domain binding protein 11
213226_at	CCNA2	3,7	down	Cyclin A2
203726_s_at	LAMA3	3,7	up	laminin, alpha 3
207735_at	RNF125	3,7	up	ring finger protein 125
212614_at	ARID5B	3,7	up	AT rich interactive domain 5B (MRF1-like)
230110_at	MCOLN2	3,7	up	mucopolipin 2
205034_at	CCNE2	3,7	down	cyclin E2
230699_at	PGLS	3,7	up	6-phosphogluconolactonase
218330_s_at	NAV2	3,7	up	neuron navigator 2
230893_at	DNAJA5	3,7	up	DnaJ homology subfamily A member 5
215016_x_at	DST	3,7	up	dystonin
225728_at	IPO9	3,7	up	Importin 9
217995_at	SQRDL	3,7	up	sulfide quinone reductase-like (yeast)
221139_s_at	CSAD	3,6	up	cysteine sulfinic acid decarboxylase
221834_at	SIAH1	3,6	up	Seven in absentia homolog 1 (Drosophila)
224407_s_at	MASK	3,6	down	Mst3 and SOK1-related kinase /// Mst3 and SOK1-related kinase
227195_at	ZNF503	3,6	up	zinc finger protein 503
203089_s_at	HTRA2	3,6	down	HtrA serine peptidase 2
212400_at	C9orf132	3,6	up	chromosome 9 open reading frame 132
222558_at	P15RS	3,6	down	hypothetical protein FLJ10656
240016_at	SENP6	3,6	up	SUMO1/sentrin specific peptidase 6
208868_s_at	GABARAPL1	3,6	down	GABA(A) receptor-associated protein like 1
202337_at	PMF1	3,6	down	polyamine-modulated factor 1
219342_at	NBLA04196	3,6	down	putative protein product of Nbla04196
226661_at	CDCA2	3,6	down	cell division cycle associated 2
218309_at	CAMK2N1	3,6	up	calcium/calmodulin-dependent protein kinase II inhibitor 1
222690_s_at	TMEM39A	3,6	down	transmembrane protein 39A
231148_at	IGFL2	3,6	down	insulin growth factor-like family member 2
1553603_s_at	ARL6IP2	3,6	down	ADP-ribosylation factor-like 6 interacting protein 2
236314_at		3,6	up	troglydotes]
207956_x_at	APRIN	3,6	down	androgen-induced proliferation inhibitor
204967_at	APXL	3,6	up	apical protein-like (Xenopus laevis)
235505_s_at		3,6	up	MRNA full length insert cDNA clone EUROIMAGE 358906
227804_at	LOC116238	3,6	up	hypothetical protein BC014072
203638_s_at	FGFR2	3,6	up	dysostosis 1, Crouzon syndrome, Pfeiffer syndrome, Jackson-Weiss syndrome)
209267_s_at	SLC39A8	3,6	up	solute carrier family 39 (zinc transporter), member 8
223184_s_at	AGPAT3	3,6	up	1-acylglycerol-3-phosphate O-acyltransferase 3
238549_at	CBFA2T2	3,6	up	core-binding factor, runt domain, alpha subunit 2; translocated to, 2
207598_x_at	XRCC2	3,6	down	X-ray repair complementing defective repair in Chinese hamster cells 2
219433_at	BCOR	3,6	up	BCL6 co-repressor
213143_at	LOC257407	3,6	up	hypothetical protein LOC257407
202034_x_at	RB1CC1	3,6	up	RB1-inducible coiled-coil 1
203641_s_at	COBLL1	3,6	up	COBL-like 1
202597_at	IRF6	3,6	up	interferon regulatory factor 6
212556_at	SCRIB	3,6	up	scribbled homolog (Drosophila)
204352_at	TRAF5	3,6	up	TNF receptor-associated factor 5
211382_s_at	TACC2	3,6	up	transforming, acidic coiled-coil containing protein 2
203044_at	CHSY1	3,6	up	carbohydrate (chondroitin) synthase 1
234923_at	GARNL1	3,6	up	GTPase activating Rap/RanGAP domain-like 1
222201_s_at	CASP8AP2	3,6	down	CASP8 associated protein 2
200895_s_at	FKBP4	3,6	down	FK506 binding protein 4, 59kDa
217861_s_at	PREB	3,6	down	prolactin regulatory element binding
217832_at	SYNCRIP	3,6	down	synaptotagmin binding, cytoplasmic RNA interacting protein
208313_s_at	SF1	3,6	down	splicing factor 1
219274_at	TSPAN12	3,6	up	tetraspanin 12
1568597_at		3,6	up	LOC441207
231894_at	SARS	3,6	up	Seryl-tRNA synthetase
33323_r_at	SFN	3,6	up	stratifin
210962_s_at	AKAP9	3,6	up	A kinase (PRKA) anchor protein (yotiao) 9
200623_s_at	CALM3	3,6	down	calmodulin 3 (phosphorylase kinase, delta)
218399_s_at	CDCA4	3,6	down	cell division cycle associated 4
202721_s_at	GFPT1	3,6	down	glutamine-fructose-6-phosphate transaminase 1

201435_s_at	EIF4E	3,6	down	eukaryotic translation initiation factor 4E
228445_at	AMID	3,6	up	apoptosis-inducing factor (AIF)-like mitochondrion-associated inducer of death
213501_at	ACOX1	3,6	up	acyl-Coenzyme A oxidase 1, palmitoyl
224626_at	SLC35A4	3,6	down	solute carrier family 35, member A4
238058_at	LOC150381	3,6	up	hypothetical protein LOC150381
227946_at	OSBPL7	3,6	up	oxysterol binding protein-like 7
218336_at	PFDN2	3,6	down	prefoldin 2
225318_at	WHSC1L1	3,6	down	Wolf-Hirschhorn syndrome candidate 1-like 1
202933_s_at	YES1	3,6	up	v-yes-1 Yamaguchi sarcoma viral oncogene homolog 1
218542_at	C10orf3	3,6	down	chromosome 10 open reading frame 3
203335_at	PHYH	3,6	up	phytanoyl-CoA hydroxylase (Refsum disease)
222413_s_at	MLL3	3,6	up	myeloid/lymphoid or mixed-lineage leukemia 3
223134_at	BBX	3,6	up	bobby sox homolog (Drosophila)
203659_s_at	RFP2	3,6	down	ret finger protein 2
209233_at	C2F	3,6	down	C2f protein
224759_s_at	MGC17943	3,6	down	hypothetical protein MGC17943
219164_s_at	C14orf103	3,6	up	chromosome 14 open reading frame 103
225857_s_at		3,6	down	RNA, U71A small nucleolar
212536_at	ATP11B	3,6	up	ATPase, Class VI, type 11B
212152_x_at	ARID1A	3,6	down	AT rich interactive domain 1A (SWI- like)
230492_s_at	KIAA1434	3,6	up	hypothetical protein KIAA1434
1554351_a_at	TIPRL	3,6	down	TIP41, TOR signalling pathway regulator-like (S, cerevisiae)
212677_s_at	KIAA0582	3,6	up	KIAA0582
201920_at	SLC20A1	3,6	down	solute carrier family 20 (phosphate transporter), member 1
230518_at	EVA1	3,6	up	epithelial V-like antigen 1
204234_s_at	ZNF195	3,5	up	zinc finger protein 195
201779_s_at	RNF13	3,5	up	ring finger protein 13
227786_at	THRAP6	3,5	down	thyroid hormone receptor associated protein 6
201879_at	ARIH1	3,5	up	ariadne homolog, ubiquitin-conjugating enzyme E2 binding protein, 1 (Drosophila)
204009_s_at	KRAS	3,5	down	v-Ki-ras2 Kirsten rat sarcoma viral oncogene homolog
201340_s_at	ENC1	3,5	up	ectodermal-neural cortex (with BTB-like domain)
236196_at		3,5	up	CDNA FLJ44883 fis, clone BRAMY2036918
219976_at	HOOK1	3,5	down	hook homolog 1 (Drosophila)
224913_s_at	TMM50	3,5	down	translocase of inner mitochondrial membrane 50 homolog (yeast)
203215_s_at	MYO6	3,5	up	myosin VI
235879_at	MBNL1	3,5	up	Muscleblind-like (Drosophila)
220703_at	C10orf110	3,5	up	chromosome 10 open reading frame 110
225005_at	PHF13	3,5	down	PHD finger protein 13
228991_at	CDC2L5	3,5	up	Cell division cycle 2-like 5 (cholinesterase-related cell division controller)
218903_s_at	MGC2731	3,5	down	hypothetical protein MGC2731
46256_at	SPSB3	3,5	up	splA/ryanodine receptor domain and SOCS box containing 3
212279_at	MAC30	3,5	down	hypothetical protein MAC30
212532_s_at	FLJ30656	3,5	down	hypothetical protein FLJ30656
226787_at	ZNF18	3,5	up	zinc finger protein 18 (KOX 11)
203592_s_at	FSTL3	3,5	up	folliculin-like 3 (secreted glycoprotein)
203143_s_at	KIAA0040	3,5	up	KIAA0040
226155_at	KIAA1600	3,5	up	KIAA1600
203871_at	SEN3	3,5	down	SUMO1/sentrin/SMT3 specific peptidase 3
228238_at	GAS5	3,5	down	RNA, U47 small nuclear /// growth arrest-specific 5
225687_at	C20orf129	3,5	up	chromosome 20 open reading frame 129
214437_s_at	SHMT2	3,5	down	serine hydroxymethyltransferase 2 (mitochondrial)
218383_at	C14orf94	3,5	down	chromosome 14 open reading frame 94
223743_s_at	MRPL4	3,5	down	mitochondrial ribosomal protein L4
228242_at		3,5	up	Transcribed locus
209667_at	CES2	3,5	up	carboxylesterase 2 (intestine, liver)
221569_at	AHI1	3,5	down	Abelson helper integration site
201504_s_at	TSN	3,5	down	translin
205251_at	PER2	3,5	down	period homolog 2 (Drosophila)
208829_at	TAPBP	3,5	down	TAP binding protein (tapasin)
224861_at	GNAQ	3,5	up	Guanine nucleotide binding protein (G protein), q polypeptide
202756_s_at	GPC1	3,5	up	glypican 1
1558279_a_at	FVT1	3,5	up	Follicular lymphoma variant translocation 1
224562_at	WASF2	3,5	down	WAS protein family, member 2
218846_at	CRSP3	3,5	up	cofactor required for Sp1 transcriptional activation, subunit 3, 130kDa
224870_at	KIAA0114	3,5	down	KIAA0114 gene product
214845_s_at	CALU	3,5	down	calumenin
209265_s_at	METTL3	3,5	down	methyltransferase like 3
204181_s_at	ZNF297B	3,5	up	zinc finger protein 297B
229622_at	FLJ37034	3,5	up	hypothetical protein FLJ37034
230177_at		3,5	down	Transcribed locus
214352_s_at	KRAS	3,5	down	v-Ki-ras2 Kirsten rat sarcoma viral oncogene homolog
228497_at	SLC22A15	3,5	up	solute carrier family 22 (organic cation transporter), member 15
213165_at	CAP350	3,5	up	Centrosome-associated protein 350
217602_at	PPIA	3,5	up	peptidylprolyl isomerase A (cyclophilin A)
201742_x_at	SFRS1	3,5	down	splicing factor, arginine/serine-rich 1 (splicing factor 2, alternate splicing factor)
205579_at	HRH1	3,5	up	histamine receptor H1
225383_at	ZNF275	3,5	up	zinc finger protein 275
212099_at	RHOB	3,5	up	ras homolog gene family, member B
224747_at	UBE2Q2	3,5	up	ubiquitin-conjugating enzyme E2Q (putative) 2
209318_x_at	PLAGL1	3,5	up	pleiomorphic adenoma gene-like 1
1554768_a_at	MAD2L1	3,5	down	MAD2 mitotic arrest deficient-like 1 (yeast)

225846_at	RBM35A	3,5	up	RNA binding motif protein 35A
227856_at	FLJ39370	3,5	up	hypothetical protein FLJ39370
213508_at	C14orf147	3,5	up	chromosome 14 open reading frame 147
218979_at	C9orf76	3,5	down	chromosome 9 open reading frame 76
226895_at	NFIC	3,5	down	Nuclear factor I/C (CCAAT-binding transcription factor)
220072_at	CSPP1	3,5	down	centrosome and spindle pole associated protein 1
212875_s_at	C21orf25	3,5	up	chromosome 21 open reading frame 25
212841_s_at	PPFIBP2	3,5	up	PTPRF interacting protein, binding protein 2 (liprin beta 2)
218156_s_at	FLJ10534	3,5	down	hypothetical protein FLJ10534
208875_s_at	PAK2	3,5	down	p21 (CDKN1A)-activated kinase 2
91816_f_at	RKHD1	3,5	down	ring finger and KH domain containing 1
219239_s_at	ZNF654	3,5	up	zinc finger protein 654
217962_at	NOLA3	3,5	down	nucleolar protein family A, member 3 (H/ACA small nucleolar RNPs)
212859_x_at	MT1E	3,5	up	metallothionein 1E (functional)
HSAC07/X0035	ACTB	3,5	down	actin, beta
222415_at	MLL3	3,5	up	myeloid/lymphoid or mixed-lineage leukemia 3
234725_s_at	SEMA4B	3,5	up	(semaphorin) 4B
217980_s_at	MRPL16	3,5	down	mitochondrial ribosomal protein L16
214061_at	WDR67	3,5	up	WD repeat domain 67
205061_s_at	EXOSC9	3,5	down	exosome component 9
200854_at	NCOR1	3,5	up	nuclear receptor co-repressor 1
1555427_s_at	SYNCRIP	3,5	down	synaptotagmin binding, cytoplasmic RNA interacting protein
240436_at		3,5	up	Zinc finger, DHHC-type containing 20
241838_at		3,5	up	Transcribed locus
241786_at	PPP3R1	3,5	down	Protein phosphatase 3 (formerly 2B), regulatory subunit B, 19kDa, alpha isoform (calcineurin B, type I)
212845_at	SAMD4	3,5	up	sterile alpha motif domain containing 4
204162_at	KNTC2	3,5	down	kinetochore associated 2
214383_x_at	KLHDC3	3,5	down	kelch domain containing 3
208930_s_at	ILF3	3,5	down	interleukin enhancer binding factor 3, 90kDa
208093_s_at	NDEL1	3,5	up	nidulans)
218728_s_at	CNIH4	3,5	up	cornichon homolog 4 (Drosophila)
201363_s_at	IVNS1ABP	3,5	down	influenza virus NS1A binding protein
203910_at	ARHGAP29	3,4	up	Rho GTPase activating protein 29
204796_at	EML1	3,4	up	echinoderm microtubule associated protein like 1
1554423_a_at	FBXO7	3,4	down	F-box protein 7
225132_at	FBXL3	3,4	up	F-box and leucine-rich repeat protein 3
233970_s_at	CGI-09	3,4	down	CGI-09 protein
201462_at	SCRN1	3,4	down	secernin 1
225171_at	ARHGAP18	3,4	down	Rho GTPase activating protein 18
227489_at	SMURF2	3,4	up	SMAD specific E3 ubiquitin protein ligase 2
213372_at	PAQR3	3,4	up	progesterin and adipoQ receptor family member III
217783_s_at	YPEL5	3,4	up	yippee-like 5 (Drosophila)
209482_at	POP7	3,4	down	processing of precursor 7, ribonuclease P subunit (S, cerevisiae)
226449_at	FLJ36090	3,4	up	hypothetical protein FLJ36090
238756_at	GAS2L3	3,4	down	Growth arrest-specific 2 like 3
224713_at	MKI67IP	3,4	down	MKI67 (FHA domain) interacting nucleolar phosphoprotein
217754_at	DDX56	3,4	down	DEAD (Asp-Glu-Ala-Asp) box polypeptide 56
221497_x_at	EGLN1	3,4	up	egl nine homolog 1 (C, elegans)
218111_s_at	CMAS	3,4	down	cytidine monophosphate N-acetylneuraminic acid synthetase
33322_i_at	SFN	3,4	up	stratifin
232541_at	EGFR	3,4	up	Epidermal growth factor receptor (erythroblastic leukemia viral (v-erb-b) oncogene homolog, avian)
201490_s_at	PIIF	3,4	down	peptidylprolyl isomerase F (cylophilin F)
226924_at	LOC400657	3,4	up	hypothetical gene supported by BC036588
226604_at	SMILE	3,4	up	SMILE protein
35671_at	GTF3C1	3,4	down	general transcription factor IIIC, polypeptide 1, alpha 220kDa
209162_s_at	PRP4	3,4	down	PRP4 pre-mRNA processing factor 4 homolog (yeast)
217867_x_at	BACE2	3,4	up	beta-site APP-cleaving enzyme 2
214030_at	2110	3,4	up	hypothetical protein DKFZp667G2110
226750_at	LARP2	3,4	up	La ribonucleoprotein domain family, member 2
236381_s_at	WDR8	3,4	up	WD repeat domain 8
202736_s_at	LSM4	3,4	down	LSM4 homolog, U6 small nuclear RNA associated (S, cerevisiae)
213823_at	HOXA11	3,4	up	homeo box A11
202625_at	LYN	3,4	up	homolog
204681_s_at	RAPGEF5	3,4	up	Rap guanine nucleotide exchange factor (GEF) 5
227531_at		3,4	down	CDNA FLJ39000 fis, clone NT2RI2022468
225220_at		3,4	down	ACA24 snoRNA gene
230571_at	TM4SF11	3,4	up	Plasma membrane proteolipid (plasmolipin)
206374_at	DUSP8	3,4	up	dual specificity phosphatase 8
212414_s_at	PAC	3,4	up	septin 6 /// cytokine-like nuclear factor n-pac
210983_s_at	MCM7	3,4	down	MCM7 minichromosome maintenance deficient 7 (S, cerevisiae)
227514_at	LOC162073	3,4	up	Hypothetical protein LOC162073
226748_at	LYSMD2	3,4	up	LysM, putative peptidoglycan-binding, domain containing 2
213393_at	MGC11332	3,4	up	Hypothetical protein MGC11332
207565_s_at	MR1	3,4	up	major histocompatibility complex, class I-related
217950_at	NOSIP	3,4	down	nitric oxide synthase interacting protein
220520_s_at	FLJ20130	3,4	up	hypothetical protein FLJ20130
232008_s_at	BBX	3,4	up	bobby sox homolog (Drosophila)
230598_at	KIAA1387	3,4	up	KIAA1387 protein
221821_s_at	FLJ20436	3,4	up	hypothetical protein FLJ20436
226297_at	HIPK3	3,4	up	Homeodomain interacting protein kinase 3
215483_at	AKAP9	3,4	up	A kinase (PRKA) anchor protein (yotiao) 9

218902_at	NOTCH1	3,4	up	Notch homolog 1, translocation-associated (Drosophila)
207992_s_at	AMPD3	3,4	up	adenosine monophosphate deaminase (isoform E)
202179_at	BLMH	3,4	up	bleomycin hydrolase
211797_s_at	NFYC	3,4	down	nuclear transcription factor Y, gamma
201286_at	SDC1	3,4	up	syndecan 1
204080_at	TOE1	3,4	down	target of EGR1, member 1 (nuclear)
205449_at	SAC3D1	3,4	up	SAC3 domain containing 1
203693_s_at	E2F3	3,4	up	E2F transcription factor 3
202705_at	CCNB2	3,4	down	cyclin B2
227197_at	SGEF	3,4	down	Src homology 3 domain-containing guanine nucleotide exchange factor
201716_at	SNX1	3,4	down	sorting nexin 1
236009_at		3,4	up	Transcribed locus
223378_at	GLIS2	3,4	up	GLIS family zinc finger 2
211980_at	COL4A1	3,4	up	collagen, type IV, alpha 1
219006_at	C6orf66	3,4	down	chromosome 6 open reading frame 66
208097_s_at	TXNDC	3,4	down	thioredoxin domain containing /// thioredoxin domain containing
229312_s_at	GKAP1	3,4	up	G kinase anchoring protein 1
204267_x_at	PKMYT1	3,4	down	protein kinase, membrane associated tyrosine/threonine 1
1555679_a_at	RTN4IP1	3,4	down	reticulum 4 interacting protein 1
226702_at	LOC129607	3,4	up	hypothetical protein LOC129607
200921_s_at	BTG1	3,4	up	B-cell translocation gene 1, anti-proliferative
225735_at	KIAA1223	3,4	up	KIAA1223 protein
1567080_s_at	CLN6	3,4	down	ceroid-lipofuscinosis, neuronal 6, late infantile, variant
227138_at	CRTAP	3,4	up	cartilage associated protein
239355_at	GCL	3,3	up	Germ cell-less homolog 1 (Drosophila)
204179_at	MB	3,3	up	myoglobin
208884_s_at	EDD1	3,3	down	E3 ubiquitin protein ligase, HECT domain containing, 1
222400_s_at	MTCBP-1	3,3	up	membrane-type 1 matrix metalloproteinase cytoplasmic tail binding protein-1
226326_at	PCGF5	3,3	up	polycomb group ring finger 5
224983_at	SCARB2	3,3	up	scavenger receptor class B, member 2
201763_s_at	DAXX	3,3	down	death-associated protein 6
229638_at	IRX3	3,3	up	iroquois homeobox protein 3
228003_at	RAB30	3,3	up	RAB30, member RAS oncogene family
217749_at	COPG	3,3	down	coatamer protein complex, subunit gamma
230083_at	USP53	3,3	up	Ubiquitin specific peptidase 53
212437_at	CENPB	3,3	down	centromere protein B, 80kDa
202932_at	YES1	3,3	up	v-yes-1 Yamaguchi sarcoma viral oncogene homolog 1
213230_at	HUMPPA	3,3	up	paraneoplastic antigen
202975_s_at	RHOBTB3	3,3	down	Rho-related BTB domain containing 3
222130_s_at	FTSJ2	3,3	down	FtsJ homolog 2 (E. coli)
235955_at	MARVELD2	3,3	up	MARVEL domain containing 2
225308_s_at	TANC	3,3	up	TPR domain, ankyrin-repeat and coiled-coil-containing
1560622_at	TPARL	3,3	up	TPA regulated locus
204905_s_at	EEF1E1	3,3	down	eukaryotic translation elongation factor 1 epsilon 1
219122_s_at	ICF45	3,3	down	interphase cytoplasmic foci protein 45
203373_at	SOCS2	3,3	down	suppressor of cytokine signaling 2
201120_s_at	PGRMC1	3,3	down	progesterone receptor membrane component 1
200919_at	PHC2	3,3	down	polyhomeotic-like 2 (Drosophila)
242310_at	FNBP1L	3,3	up	Formin binding protein 1-like
238587_at	STS-1	3,3	up	Cbl-interacting protein Sts-1
1566887_x_at	KIAA0284	3,3	up	KIAA0284
221656_s_at	ARHGEF10L	3,3	up	Rho guanine nucleotide exchange factor (GEF) 10-like
202169_s_at	AASDHPPT	3,3	down	aminoadipate-semialdehyde dehydrogenase-phosphopantetheinyl transferase
231899_at	ZC3H12C	3,3	up	zinc finger CCCH-type containing 12C
1564381_s_at	CEBPZ	3,3	up	CCAAT/enhancer binding protein zeta
209475_at	USP15	3,3	up	ubiquitin specific peptidase 15
201688_s_at	TPD52	3,3	down	tumor protein D52
228401_at	ATAD2	3,3	down	ATPase family, AAA domain containing 2
208896_at	DDX18	3,3	down	DEAD (Asp-Glu-Ala-Asp) box polypeptide 18
212533_at	WEE1	3,3	up	WEE1 homolog (S. pombe)
208799_at	PSMB5	3,3	down	proteasome (prosome, macropain) subunit, beta type, 5
209502_s_at	BAIAP2	3,3	up	BAI1-associated protein 2
218733_at	RNF184	3,3	up	ring finger protein 184
241968_at		3,3	up	Transcribed locus
212527_at	D15Wsu75e	3,3	down	DNA segment, Chr 15, Wayne State University 75, expressed
223271_s_at	CTDSP2	3,3	down	CTD (carboxy-terminal domain, RNA polymerase II, polypeptide A) small phosphatase like 2
226553_at	TMPRSS2	3,3	up	transmembrane protease, serine 2
210676_x_at	RANBP2L1	3,3	up	RAN binding protein 2-like 1
204215_at	C7orf23	3,3	up	chromosome 7 open reading frame 23
206561_s_at	AKR1B10	3,3	up	aldo-keto reductase family 1, member B10 (aldose reductase)
205068_s_at	ARHGAP26	3,3	up	Rho GTPase activating protein 26
208637_x_at	ACTN1	3,3	down	actinin, alpha 1
204798_at	MYB	3,3	up	v-myb myeloblastosis viral oncogene homolog (avian)
227312_at	SNTB2	3,3	up	Syntrophin, beta 2 (dystrophin-associated protein A1, 59kDa, basic component 2)
202431_s_at	MYC	3,3	down	v-myc myelocytomatosis viral oncogene homolog (avian)
219538_at	WDR5B	3,3	down	WD repeat domain 5B
210827_s_at	ELF3	3,3	up	E74-like factor 3 (ets domain transcription factor, epithelial-specific)
225470_at	NUP35	3,3	down	nucleoporin 35kDa
217822_at	WBP11	3,3	down	WW domain binding protein 11
201357_s_at	SF3A1	3,3	down	splicing factor 3a, subunit 1, 120kDa
224391_s_at	YSG2	3,3	up	Ysg2 homolog (mouse) /// Ysg2 homolog (mouse)

204554_at	PPP1R3D	3,3	up	protein phosphatase 1, regulatory subunit 3D
238002_at	GOLPH4	3,3	up	golgi phosphoprotein 4
241879_at		3,3	up	Transcribed locus
213028_at	NFRKB	3,3	down	nuclear factor related to kappaB binding protein
203797_at	VSNL1	3,3	up	visinin-like 1
218027_at	MRPL15	3,3	down	mitochondrial ribosomal protein L15
1554149_at	C3orf4	3,3	down	chromosome 3 open reading frame 4
203214_x_at	CDC2	3,3	down	cell division cycle 2, G1 to S and G2 to M
226077_at	FLJ31951	3,3	down	hypothetical protein FLJ31951
225103_at	MRPL38	3,2	down	mitochondrial ribosomal protein L38
242196_at	RICS	3,2	down	Rho GTPase-activating protein
226202_at	ZNF398	3,2	up	zinc finger protein 398
225770_at	KIAA1972	3,2	down	KIAA1972 protein
225164_s_at	EIF2AK4	3,2	up	eukaryotic translation initiation factor 2 alpha kinase 4
1565951_s_at	CHML	3,2	down	choroideremia-like (Rab escort protein 2)
202109_at	ARFIP2	3,2	down	ADP-ribosylation factor interacting protein 2 (arfaptin 2)
218888_s_at	NETO2	3,2	down	neuropilin (NRP) and tolloid (TLL)-like 2
44111_at	VPS33B	3,2	up	vacuolar protein sorting 33B (yeast)
209454_s_at	TEAD3	3,2	up	TEA domain family member 3
203392_s_at	CTBP1	3,2	down	C-terminal binding protein 1
564_at	GNA11	3,2	up	guanine nucleotide binding protein (G protein), alpha 11 (Gq class)
226605_at	DGKQ	3,2	up	diacylglycerol kinase, theta 110kDa
203040_s_at	HMBS	3,2	down	hydroxymethylbilane synthase
202449_s_at	RXRA	3,2	up	retinoid X receptor, alpha
203913_s_at	HPGD	3,2	up	hydroxyprostaglandin dehydrogenase 15-(NAD)
229163_at	CAMK2N1	3,2	up	calcium/calmodulin-dependent protein kinase II inhibitor 1
222196_at	LOC286434	3,2	up	hypothetical protein LOC286434
216048_s_at	RHOBTB3	3,2	down	Rho-related BTB domain containing 3
210740_s_at	ITPK1	3,2	up	inositol 1,3,4-triphosphate 5/6 kinase
216698_x_at	OR7E18P ///	3,2	up	member 18 pseudogene /// olfactory receptor, family 7, subfamily E, member 35 pseudogene /// similar to olfactory
209300_s_at	NECAP1	3,2	down	NECAP endocytosis associated 1
228073_at	HDHD4	3,2	up	haloacid dehalogenase-like hydrolase domain containing 4
204299_at	FUSIP1	3,2	down	FUS interacting protein (serine/arginine-rich) 1
1569320_at	SP192	3,2	up	GC-rich promoter binding protein 1-like 1
202047_s_at	CBX6	3,2	down	chromobox homolog 6
200666_s_at	DNAJB1	3,2	down	DnaJ (Hsp40) homolog, subfamily B, member 1
219588_s_at	LUZP5	3,2	down	leucine zipper protein 5
206744_s_at	ZMYM5	3,2	up	zinc finger, MYM-type 5
202833_s_at	SERPINA1	3,2	up	serpin peptidase inhibitor, clade A (alpha-1 antiproteinase, antitrypsin), member 1
229111_at	MASP2	3,2	up	Mannan-binding lectin serine peptidase 2
226576_at	ARHGAP26	3,2	up	Rho GTPase activating protein 26
233056_x_at	DLGAP4	3,2	up	discs, large (Drosophila) homolog-associated protein 4
202012_s_at	EXT2	3,2	up	exostoses (multiple) 2
231034_s_at	NHSL1	3,2	up	NHS-like 1
219426_at	EIF2C3	3,2	up	eukaryotic translation initiation factor 2C, 3
213982_s_at	RABGAP1L	3,2	up	RAB GTPase activating protein 1-like
207265_s_at	KDEL3	3,2	down	KDEL (Lys-Asp-Glu-Leu) endoplasmic reticulum protein retention receptor 3
200707_at	PRKCSH	3,2	down	protein kinase C substrate 80K-H
218248_at	FLJ22794	3,2	down	FLJ22794 protein
207002_s_at	PLAGL1	3,2	up	pleiomorphic adenoma gene-like 1
230180_at	DDX17	3,2	down	DEAD (Asp-Glu-Ala-Asp) box polypeptide 17
219862_s_at	NARF	3,2	up	nuclear prelamin A recognition factor
227687_at	HYLS1	3,2	down	hydroletharus syndrome 1
210178_x_at	FUSIP1	3,2	down	FUS interacting protein (serine/arginine-rich) 1
214751_at	ZNF468	3,2	up	zinc finger protein ZNF468
204319_s_at	RGS10	3,2	up	regulator of G-protein signalling 10
205393_s_at	CHEK1	3,2	down	CHK1 checkpoint homolog (S, pombe)
238462_at	STS-1	3,2	up	Cbl-interacting protein Sts-1
227256_at	USP31	3,2	up	ubiquitin specific peptidase 31
201656_at	ITGA6	3,2	up	integrin, alpha 6
218516_s_at	IMPAD1	3,2	down	inositol monophosphatase domain containing 1
217878_s_at	CDC27	3,2	down	cell division cycle 27
204426_at	TMED2	3,2	down	transmembrane emp24 domain trafficking protein 2
217833_at	SYNCRIP	3,2	down	synaptotagmin binding, cytoplasmic RNA interacting protein
226747_at	KIAA1344	3,2	up	KIAA1344
225065_x_at	MGC40157	3,2	down	hypothetical protein MGC40157
203509_at	SORL1	3,2	up	sortilin-related receptor, L(DLR class) A repeats-containing
209180_at	RABGGTB	3,2	down	Rab geranylgeranyltransferase, beta subunit
226805_at	C20orf142	3,2	up	chromosome 20 open reading frame 142
231952_at	FLJ25715	3,2	up	Hypothetical protein FLJ25715
213761_at	MDM1	3,2	down	Mdm4, transformed 3T3 cell double minute 1, p53 binding protein (mouse)
219029_at	FLJ21657	3,2	down	hypothetical protein FLJ21657
1553690_at	SGOL1	3,2	down	shugoshin-like 1 (S, pombe)
230634_x_at	LOC113179	3,2	up	hypothetical protein BC011824
201329_s_at	ETS2	3,2	down	v-ets erythroblastosis virus E26 oncogene homolog 2 (avian)
225598_at	SLC45A4	3,2	up	solute carrier family 45, member 4
223104_at	JAGN1	3,2	down	jagunal homolog 1 (Drosophila)
202884_s_at	PPP2R1B	3,2	down	protein phosphatase 2 (formerly 2A), regulatory subunit A (PR 65), beta isoform
212759_s_at	TCF7L2	3,2	down	transcription factor 7-like 2 (T-cell specific, HMG-box)
219756_s_at	POF1B	3,2	up	premature ovarian failure, 1B
203224_at	RFK	3,2	up	riboflavin kinase

207239_s_at	PCTK1	3,2	down	PCTAIRE protein kinase 1
227611_at	TARSL2	3,2	up	threonyl-tRNA synthetase-like 2
213766_x_at	GNA11	3,2	up	guanine nucleotide binding protein (G protein), alpha 11 (Gq class)
223176_at	C6orf69	3,2	down	chromosome 6 open reading frame 69
200604_s_at	PRKAR1A	3,2	down	protein kinase, cAMP-dependent, regulatory, type I, alpha (tissue specific extinguisher 1)
219673_at	C6orf61	3,2	up	chromosome 6 open reading frame 61
209467_s_at	MKNK1	3,2	down	MAP kinase interacting serine/threonine kinase 1
218260_at	PCIA1	3,2	down	cross-immune reaction antigen PCIA1
208939_at	SEPHS1	3,2	down	selenophosphate synthetase 1
204127_at	RFC3	3,2	down	replication factor C (activator 1) 3, 38kDa
1558401_at		3,2	up	CDNA FLJ41675 fis, clone HCASM2002148
224428_s_at	CDCA7	3,2	down	cell division cycle associated 7 /// cell division cycle associated 7
209129_at	TRIP6	3,2	down	thyroid hormone receptor interactor 6
205315_s_at	SNTB2	3,2	up	syntrophin, beta 2 (dystrophin-associated protein A1, 59kDa, basic component 2)
219043_s_at	LOC285359	3,2	up	phosducin-like 3 /// hypothetical protein FLJ12205
200916_at	TAGLN2	3,2	down	transgelin 2
222751_at	FLJ22313	3,2	up	hypothetical protein FLJ22313
202985_s_at	BAG5	3,2	up	BCL2-associated athanogene 5
204177_s_at	KLHL20	3,2	up	kelch-like 20 (Drosophila)
226438_at	SNTB1	3,2	down	Syntrophin, beta 1 (dystrophin-associated protein A1, 59kDa, basic component 1)
236368_at	KIAA0368	3,2	up	KIAA0368
209682_at	CBLB	3,2	up	Cas-Br-M (murine) ecotropic retroviral transforming sequence b
223490_s_at	EXOSC3	3,2	down	exosome component 3
201302_at	ANXA4	3,2	up	annexin A4
210027_s_at	APEX1	3,2	down	APEX nuclease (multifunctional DNA repair enzyme) 1
219362_at	MAK10	3,2	up	MAK10 homolog, amino-acid N-acetyltransferase subunit, (S, cerevisiae)
204831_at	CDK8	3,2	up	Cyclin-dependent kinase 8
202777_at	SHOC2	3,2	up	soc-2 suppressor of clear homolog (C, elegans)
225543_at	GTF3C4	3,1	up	General transcription factor IIIC, polypeptide 4, 90kDa
202424_at	MAP2K2	3,1	down	mitogen-activated protein kinase kinase 2
218734_at	FLJ13848	3,1	down	hypothetical protein FLJ13848
225580_at	MRPL50	3,1	down	mitochondrial ribosomal protein L50
224036_s_at	LMBR1	3,1	down	limb region 1 homolog (mouse)
223151_at	DCUN1D5	3,1	down	DCN1, defective in cullin neddylation 1, domain containing 5 (S, cerevisiae)
220840_s_at	C10orf112	3,1	down	chromosome 1 open reading frame 112
205077_s_at	PIGF	3,1	up	phosphatidylinositol glycan, class F
242515_x_at	C11orf17	3,1	down	chromosome 11 open reading frame 17
224753_at	CDCA5	3,1	down	cell division cycle associated 5
209725_at	DRIM	3,1	down	down-regulated in metastasis
212033_at	RBM25	3,1	down	RNA binding motif protein 25
226185_at	CDS1	3,1	up	CDP-diacylglycerol synthase (phosphatidate cytidyltransferase) 1
1554539_a_at	RHOF	3,1	down	ras homolog gene family, member F (in filopodia)
212493_s_at	HYPB	3,1	up	huntingtin interacting protein B
222380_s_at		3,1	up	Similar to Microneme antigen
227473_at	CTTN	3,1	up	Cortactin
203320_at	LNK	3,1	up	lymphocyte adaptor protein
208916_at	SLC1A5	3,1	down	solute carrier family 1 (neutral amino acid transporter), member 5
203939_at	NT5E	3,1	up	5'-nucleotidase, ecto (CD73)
218617_at	TRIT1	3,1	up	tRNA isopentenyltransferase 1
205196_s_at	AP1S1	3,1	down	adaptor-related protein complex 1, sigma 1 subunit
229017_s_at	RIPK5	3,1	up	receptor interacting protein kinase 5
212190_at	SERPINE2	3,1	up	serpin peptidase inhibitor, clade E (nexin, plasminogen activator inhibitor type 1), member 2
221994_at	PDLIM5	3,1	up	PDZ and LIM domain 5
223013_at	TBL1XR1	3,1	down	transducin (beta)-like 1X-linked receptor 1
218152_at	HMG20A	3,1	down	high-mobility group 20A
200757_s_at	CALU	3,1	down	calumenin
1568609_s_at	FLJ39739	3,1	down	family with sequence similarity 91, member A2 /// FLJ39739 protein
235154_at	TAF3	3,1	up	TAF3 RNA polymerase II, TATA box binding protein (TBP)-associated factor, 140kDa
222212_s_at	LASS2	3,1	down	LAG1 longevity assurance homolog 2 (S, cerevisiae)
219181_at	LIPG	3,1	up	lipase, endothelial
217899_at	FLJ20254	3,1	down	Hypothetical protein FLJ20254
232471_at	MYO1E	3,1	up	Myosin IE
208652_at	PPP2CA	3,1	down	protein phosphatase 2 (formerly 2A), catalytic subunit, alpha isoform
225173_at	ARHGAP18	3,1	down	Rho GTPase activating protein 18
209177_at	123	3,1	down	nuclear protein E3-3
227295_at	IKIP	3,1	up	IKK interacting protein
224721_at	WDR75	3,1	down	WD repeat domain 75
218633_x_at	ABHD10	3,1	down	abhydrolase domain containing 10
201970_s_at	NASP	3,1	down	nuclear autoantigenic sperm protein (histone-binding)
222037_at	MCM4	3,1	down	MCM4 minichromosome maintenance deficient 4 (S, cerevisiae)
212595_s_at	DAZAP2	3,1	down	DAZ associated protein 2
218373_at	FTS	3,1	up	fused toes homolog (mouse)
222995_s_at	RHBDL7	3,1	down	rhomboid, veinlet-like 7 (Drosophila)
239208_s_at		3,1	down	Full-length cDNA clone CS0CAP007YH21 of Thymus of Homo sapiens (human)
212895_s_at	ABR	3,1	up	active BCR-related gene
229399_at	C10orf118	3,1	down	chromosome 10 open reading frame 118
222770_s_at	FLJ13220	3,1	up	hypothetical protein FLJ13220
216863_s_at	MORC2	3,1	down	MORC family CW-type zinc finger 2
209907_s_at	ITSN2	3,1	up	intersectin 2
212724_at	RND3	3,1	up	Rho family GTPase 3
225160_x_at	MGC5370	3,1	up	hypothetical protein MGC5370

219439_at	C1GALT1	3,1	up	core 1 synthase, glycoprotein-N-acetylgalactosamine 3-beta-galactosyltransferase, 1
202626_s_at	LYN	3,1	up	homolog
209161_at	PRPF4	3,1	down	PRP4 pre-mRNA processing factor 4 homolog (yeast)
208328_s_at	MEF2A	3,1	up	MADS box transcription enhancer factor 2, polypeptide A (myocyte enhancer factor 2A)
222688_at	PHCA	3,1	up	phytoceramidase, alkaline
226233_at	B3GALNT2	3,1	up	UDP-GalNAc:betaGlcNAc beta 1,3-galactosaminyltransferase, polypeptide 2
223465_at	COL4A3BP	3,1	down	collagen, type IV, alpha 3 (Goodpasture antigen) binding protein
200753_x_at	SFRS2	3,1	down	splicing factor, arginine/serine-rich 2
213134_x_at	BTG3	3,1	down	BTG family, member 3
203740_at	MPHOSPH6	3,1	down	M-phase phosphoprotein 6
204686_at	IRS1	3,1	down	insulin receptor substrate 1
214119_s_at	FKBP1A	3,1	down	FK506 binding protein 1A, 12kDa
1557458_s_at	SHB	3,1	up	Src homology 2 domain containing adaptor protein B
222459_at	C1orf108	3,1	down	chromosome 1 open reading frame 108
207891_s_at	UIP1	3,1	down	three prime repair exonuclease 2 /// 26S proteasome-associated UCH interacting protein 1
212245_at	MCFD2	3,1	up	multiple coagulation factor deficiency 2
202130_at	RIOK3	3,1	up	RIO kinase 3 (yeast) /// RIO kinase 3 (yeast)
217774_s_at	HSPC152	3,1	down	hypothetical protein HSPC152
227567_at	GRB2-like	3,1	up	SH3-domain GRB2-like pseudogene 3
232266_x_at	CDC2L5	3,1	up	Cell division cycle 2-like 5 (cholinesterase-related cell division controller)
226348_at		3,1	up	
219437_s_at	ANKRD11	3,1	up	ankyrin repeat domain 11
224932_at	C22orf16	3,1	down	chromosome 22 open reading frame 16
209276_s_at	GLRX	3,1	down	glutaredoxin (thioltransferase)
223912_s_at	CLN8	3,1	up	ceroid-lipofuscinosis, neuronal 8 (epilepsy, progressive with mental retardation)
209572_s_at	EED	3,1	up	embryonic ectoderm development
212742_at	ZNF364	3,1	down	zinc finger protein 364
238883_at	THRAP2	3,1	up	Thyroid hormone receptor associated protein 2
231775_at	TNFRSF10A	3,1	up	tumor necrosis factor receptor superfamily, member 10a
219024_at	PLEKHA1	3,1	up	pleckstrin homology domain containing, family A (phosphoinositide binding specific) member 1
205293_x_at	BAIAP2	3,1	up	BAI1-associated protein 2
200703_at	DNCL1	3,1	down	dynein, cytoplasmic, light polypeptide 1
223381_at	CDCA1	3,1	down	cell division cycle associated 1
225239_at		3,1	up	CDNA FLJ26120 fis, clone SYN00419
226393_at	CYP2U1	3,1	up	cytochrome P450, family 2, subfamily U, polypeptide 1
219866_at	CLIC5	3,1	up	chloride intracellular channel 5
200644_at	MARCKSL1	3,1	down	MARCKS-like 1
212254_s_at	DST	3,1	up	dystonin
201881_s_at	ARIH1	3,1	up	ariadne homolog, ubiquitin-conjugating enzyme E2 binding protein, 1 (Drosophila)
239133_at	HSPC129	3,0	down	CTD (carboxy-terminal domain, RNA polymerase II, polypeptide A) small phosphatase like 2
225253_s_at	FLJ12760	3,0	down	methyltransferase like 2 /// hypothetical protein FLJ12760
201669_s_at	MARCKS	3,0	down	myristoylated alanine-rich protein kinase C substrate
218137_s_at	SMAP1	3,0	up	stromal membrane-associated protein 1
213376_at	ZBTB1	3,0	up	zinc finger and BTB domain containing 1
200722_s_at	M11S1	3,0	down	membrane component, chromosome 11, surface marker 1
202514_at	DLG1	3,0	down	discs, large homolog 1 (Drosophila)
219759_at	LRAP	3,0	up	leukocyte-derived arginine aminopeptidase
210679_x_at		3,0	up	
222544_s_at	WHSC1L1	3,0	down	Wolf-Hirschhorn syndrome candidate 1-like 1
204286_s_at	PMaip1	3,0	up	phorbol-12-myristate-13-acetate-induced protein 1
241985_at	JMY	3,0	up	junction-mediating and regulatory protein
226515_at	LOC133957	3,0	down	similar to RIKEN cDNA 0610011N22
201696_at	SFRS4	3,0	down	splicing factor, arginine/serine-rich 4
204679_at	KCNK1	3,0	up	potassium channel, subfamily K, member 1
226626_at	THOC2	3,0	down	THO complex 2
204039_at	CEBPA	3,0	up	CCAAT/enhancer binding protein (C/EBP), alpha
225578_at	LOC440145	3,0	down	similar to RIKEN cDNA 2410129H14
217748_at	ADIPOR1	3,0	down	adiponectin receptor 1 /// adiponectin receptor 1
202028_s_at		3,0	up	
201734_at	CLCN3	3,0	down	Chloride channel 3
227921_at		3,0	down	
223639_s_at	ZNRD1	3,0	down	zinc ribbon domain containing, 1
210480_s_at	MYO6	3,0	up	myosin VI
205709_s_at	CDS1	3,0	up	CDP-diacylglycerol synthase (phosphatidate cytidyltransferase) 1
227668_at	FLJ31528	3,0	up	hypothetical protein FLJ31528
209580_s_at	MBD4	3,0	down	methyl-CpG binding domain protein 4
216593_s_at	PIGC	3,0	down	phosphatidylinositol glycan, class C
230713_at	ZCCHC11	3,0	up	Zinc finger, CCHC domain containing 11
218611_at	IER5	3,0	up	immediate early response 5
228334_x_at	KIAA1712	3,0	down	KIAA1712
239202_at	RAB3B	3,0	up	RAB3B, member RAS oncogene family
213590_at	SLC16A5	3,0	up	solute carrier family 16 (monocarboxylic acid transporters), member 5
202907_s_at	NBN	3,0	down	nibrin
1562391_at	MGC39558	3,0	up	UDP-GalNAc:betaGlcNAc beta 1,3-galactosaminyltransferase, polypeptide 2
212238_at	ASXL1	3,0	down	additional sex combs like 1 (Drosophila)
225300_at	C15orf23	3,0	down	chromosome 15 open reading frame 23
244032_at		3,0	up	Transcribed locus
212461_at	AZIN1	3,0	down	antizyme inhibitor 1
57163_at	ELOVL1	3,0	up	elongation of very long chain fatty acids (FEN1/Elo2, SUR4/Elo3, yeast)-like 1
200991_s_at	SNX17	3,0	down	sorting nexin 17
209679_s_at	LOC57228	3,0	down	small trans-membrane and glycosylated protein

212628_at	PKN2	3,0	down	Protein kinase N2
227250_at	KREMEN1	3,0	up	Kringle containing transmembrane protein 1
202645_s_at	MEN1	3,0	down	multiple endocrine neoplasia I
235174_s_at		3,0	down	CDNA clone IMAGE:5286843
219518_s_at	ELL3	3,0	up	elongation factor RNA polymerase II-like 3
212538_at	DOCK9	3,0	up	dedicator of cytokinesis 9
212842_x_at	///	3,0	up	RAN binding protein 2-like 1 /// similar to Ran-binding protein 2 /// similar to RAN-binding protein 2-like 1
201178_at	FBXO7	3,0	down	F-box protein 7
222781_s_at	C9orf40	3,0	down	chromosome 9 open reading frame 40
227647_at	KCNE3	3,0	down	potassium voltage-gated channel, Isk-related family, member 3
224467_s_at	MGC13096	3,0	down	hypothetical protein MGC13096 /// hypothetical protein MGC13096
207358_x_at	MACF1	3,0	up	microtubule-actin crosslinking factor 1
228810_at	FLJ40432	3,0	up	hypothetical protein FLJ40432
209026_x_at	TUBB	3,0	down	tubulin, beta polypeptide
1553605_a_at	ABCA13	3,0	up	ATP-binding cassette, sub-family A (ABC1), member 13
204825_at	MELK	3,0	down	maternal embryonic leucine zipper kinase
204441_s_at	POLA2	3,0	down	polymerase (DNA directed), alpha 2 (70kD subunit)
227356_at		3,0	down	CDNA FLJ26015 fis, clone MPC03596
214869_x_at	GAPVD1	3,0	down	GTPase activating protein and VPS9 domains 1
209449_at	LSM2	3,0	down	LSM2 homolog, U6 small nuclear RNA associated (S, cerevisiae)
223254_s_at	KIAA1333	3,0	down	KIAA1333
216988_s_at	PTP4A2	3,0	down	protein tyrosine phosphatase type IVA, member 2
205909_at	POLE2	3,0	down	polymerase (DNA directed), epsilon 2 (p59 subunit)
1557987_at	LOC641298	3,0	up	PI-3-kinase-related kinase SMG-1 - like locus
206113_s_at	RAB5A	3,0	down	RAB5A, member RAS oncogene family
222118_at	BM039	3,0	down	uncharacterized bone marrow protein BM039
202546_at	VAMP8	3,0	up	vesicle-associated membrane protein 8 (endobrevin)
205771_s_at	AKAP7	3,0	up	A kinase (PRKA) anchor protein 7
214022_s_at	IFITM1	3,0	up	interferon induced transmembrane protein 1 (9-27)
221677_s_at	DONSON	3,0	down	downstream neighbor of SON
225953_at	P15RS	3,0	down	hypothetical protein FLJ10656
204224_s_at	GCH1	3,0	up	GTP cyclohydrolase 1 (dopa-responsive dystonia)
229333_at		3,0	down	Transcribed locus, weakly similar to XP_512541.1 PREDICTED: similar to hypothetical protein [Pan troglodytes]
236429_at	ZNF83	3,0	up	Zinc finger protein 83 (HPF1)
203931_s_at	MRPL12	3,0	down	mitochondrial ribosomal protein L12
223128_at	H17	3,0	down	hypothetical protein H17
229506_at		3,0	up	CDNA FLJ30761 fis, clone FEBRA2000538
1555832_s_at	KLF6	3,0	down	Kruppel-like factor 6
32069_at	N4BP1	3,0	up	Nedd4 binding protein 1
216504_s_at	SLC39A8	3,0	up	Solute carrier family 39 (zinc transporter), member 8
212373_at	FEM1B	3,0	up	fem-1 homolog b (C, elegans)
228505_s_at	LOC124491	3,0	down	LOC124491
202631_s_at	APPBP2	3,0	down	amyloid beta precursor protein (cytoplasmic tail) binding protein 2
209306_s_at	SWAP70	3,0	up	SWAP-70 protein
213016_at	BBX	3,0	up	Bobby sox homolog (Drosophila)
208012_x_at	SP110	3,0	up	SP110 nuclear body protein
1552797_s_at	PROM2	3,0	up	prominin 2
216237_s_at	MCM5	3,0	down	MCM5 minichromosome maintenance deficient 5, cell division cycle 46 (S, cerevisiae)
201735_s_at	CLCN3	3,0	down	chloride channel 3
203660_s_at	PCNT2	3,0	down	pericentrin 2 (kendrin)
207540_s_at	SYK	3,0	up	spleen tyrosine kinase
205751_at	SH3GL2	3,0	down	SH3-domain GRB2-like 2

Table S2 Regulated genes with their intronic miRNAs

Gene Symbol	Gene Title	miRNA	Fold change*	Regulation
TUFT1	tuftelin 1	hsa-mir-554	18,5	up
BCAR3	breast cancer anti-estrogen resistance 3	hsa-mir-760	9,4	up
PANK1	Pantothenate kinase 1	hsa-mir-107	9,1	up
PITPNC1	phosphatidylinositol transfer protein, cytoplasmic 1	hsa-mir-548d-2	4,4	up
KIAA1199	KIAA1199	hsa-mir-549	7,7	up
GALNT10	UDP-N-acetyl-alpha-D-galactosamine:polypeptide N-acetylgalactosaminyltransferase 10 (GalNAc-T10)	hsa-mir-1294	7,1	up
DENND1A	DENN/MADD domain containing 1A	hsa-mir-601	6,8	up
STRN3	striatin, calmodulin binding protein 3	hsa-mir-624	6,4	down
			6,3	
ATAD2	ATPase family, AAA domain containing 2	hsa-mir-548d-1	5,9	down
			3,3	
EIF4A2	eukaryotic translation initiation factor 4A, isoform 2	hsa-mir-1248	5,9	down
F8	coagulation factor VIII, procoagulant component (hemophilia A)	hsa-mir-1184	5,7	up
KIF18A	kinesin family member 18A /// kinesin family member 18A	hsa-mir-610	5,1	down
PPP3CA	Protein phosphatase 3 (formerly 2B), catalytic subunit, alpha isoform (calcineurin A alpha)	hsa-mir-1255a	5,0	up
ASH1L	POU domain, class 6, transcription factor 1	hsa-mir-555	4,2	up
			4,0	
RASSF3	Ras association (RalGDS/AF-6) domain family 3	hsa-mir-548c	4,1	up
			3,8	
ARIH1	Ariadne homolog, ubiquitin-conjugating enzyme E2 binding protein, 1 (Drosophila)	hsa-mir-630	3,7	up
			3,5	
			3,1	
SCRIB	scribbled homolog (Drosophila)	hsa-mir-937	3,6	up
GPC1	glypican 1	hsa-mir-149	3,5	up
		hsa-mir-106b		
MCM7	MCM7 minichromosome maintenance deficient 7 (S, cerevisiae)	hsa-mir-25	3,4	down
		hsa-mir-93		
		hsa-mir-30e		
NFYC	nuclear transcription factor Y, gamma	hsa-mir-30c-1	3,4	down
SHOC2	soc-2 suppressor of clear homolog (C, elegans)	hsa-mir-548e	3,2	up
MYO1E	myosin IE	hsa-mir-2116	3,1	up
SFRS2	splicing factor, arginine/serine-rich 2	hsa-mir-636	3,1	down

* more than one fold change value for a gene results from redundant probe sets on the employed microarray

Table S3 Target gene prediction miRNA-107

Intersection of miRanda, Pictar and Targetscan (Gene Symbol)

ADAMTSL3	HTR4	WNT3A
AFF2	ITGA2	YWHAH
ALS2CR13	JAKMIP2	ZBTB10
ANK1	KIAA1033	ZFPM2
ARL6IP2	KIF21A	ZHX1
ARL8B	KIF23	ZHX3
ARMC1	KIF3B	ZNF650
AXIN2	KIF5A	
BACH2	KPNA1	
BAI1	LATS2	
BCL11A	LRP1	
BDNF	LRP1B	
BSDC1	LRRC55	
BTG2	LRRN3	
C16orf72	MARCH3	
C20orf39	MTMR4	
CAB39	MTSS1	
CACNA2D1	MYB	
CAMKV	NDEL1	
CAPZA2	NEDD9	
CDC37L1	NF1	
CDK6	PDCD10	
CELSR2	PHF20	
CFL1	PLAG1	
CHRM1	PNN	
CHST11	PRMT8	
CNTNAP1	PURB	
CPEB3	RAB10	
CRELD1	RAB11FIP2	
CXorf23	RAB1B	
DCBLD2	RAI14	
DCUN1D4	RAP2C	
DICER1	RASL12	
DLL1	RASSF5	
DYNC1LI2	RBM24	
EIF2C1	RGS4	
EIF2C4	RNF125	
EIF4B	RNF38	
EIF5	RSBN1	
EPHA7	RSPO3	
ESRRA	RYBP	
FAM81A	SATB2	
FCHSD1	SNF1LK2	
FGF2	SNRK	
FLOT2	SRGAP1	
FOXJ2	ST8SIA3	
GLUD1	SUFU	
GLUD2	SYNJ1	
GPC6	TAF5	
HERC2	TGFBR3	
HIC2	TGIF2	
HISPPD1	TMEM16C	
HLF	TSPAN5	
HRB	UBXD8	

Table S4 Gene Ontology enrichment analysis
Significantly enriched GO-terms in the set of 115 putative
miRNA-107 target genes.

All terms below a significance cut-off at $p < 0.1$ are given.

Term	Adjusted p-value
GO biological process at level 3	
regulation of biological process (GO:0050789)	0.0009
multicellular organismal development (GO:0007275)	0.024
cell cycle (GO:0007049)	0.068
cell division (GO:0051301)	0.068
cellular component organization and biogenesis (GO:0016043)	0.086
GO biological process at level 4	
negative regulation of biological process (GO:0048519)	1.42×10^{-5}
regulation of cellular process (GO:0050794)	0.0001
regulation of developmental process (GO:0050793)	0.002
pattern specification process (GO:0007389)	0.007
GO biological process at level 5	
negative regulation of cellular process (GO:0048523)	9.72×10^{-6}
regulation of cell differentiation (GO:0045595)	0.0002
regionalization (GO:0003002)	0.026
negative regulation of developmental process (GO:0051093)	0.027
determination of symmetry (GO:0009799)	0.066
regulation of cell cycle (GO:0051726)	0.082
GO cellular component at level 9	
microtubule cytoskeleton (GO:0015630)	0.011
cytoskeletal part (GO:0044430)	0.051

Table S5 Primer list

Primer sequences

bold = mutations

underlined = restriction sites

Primer Name	Sequence 5' to 3'
CCNB2_RT_PCR_for	AAAGTTGGCTCCAAGGGTCCTT
CCNB2_RT_PCR_rev	GAAACTGGCTGAACCTGTAAAAAT
CDK6_RT_PCR_for	TGCACAGTGTACGAAACAGA
CDK6_RT_PCR_rev	ACCTCGGAGAAGCTGAAACA
CDK6_site_pGL4_for	GCATCTAG <u>A</u> aacacccttggctgcttatg
CDK6_site_pGL4_rev	GCATCTAG <u>A</u> ctgtgcttgattaccact
ChIP_ampl_1_for	GAGTGGGATCAGTGTCCAAAGTG
ChIP_ampl_1_rev	CAGTGGCACAGTCGTAGCTTACTG
ChIP_ampl_2_for	GCTAACTCCAAGCTCGTAGTGTCTG
ChIP_ampl_2_rev	CACACTCAAACACCATGTGGTCTCA
ChIP_ampl_3_for	GACATCAAGCACTACAGGCTTTGCCT
ChIP_ampl_3_rev	GAGACGCTGCTGGCTACTCTG
ChIP_ampl_4_for	GACGTAGTTGGGGACTTGA
ChIP_ampl_4_rev	TGCCATTTCCAGAGCTTCTT
ChIP_ampl_5_for	AACAACATTGGCTCCATTGCTCGG
ChIP_ampl_5_rev	GCAGTTATGTGCAAGGATGCTCAGAC
GAPDH_Northern_for	TTTTTT <u>AAGCTT</u> CGAGATCCCTCCAAAATCAA
GAPDH_Northern_rev	TTTTTT <u>GAATTC</u> TGTGAGGAGGGGAGATTGAG
GAPDH_RT_PCR_for	GACCCCTTCATTGACCTCAAC
GAPDH_RT_PCR_rev	CACGACGTAAGTACGCGCC
p130_RT_PCR_for	TGCACCAAGTGAAGAACTGG
p130_RT_PCR_rev	ATCTCCGCAAAACGAAAATG
p21_RT_PCR_for	GTCAGAACCCATGCGGCAGCAAG
p21_RT_PCR_rev	CAGGTCCACATGGTCTTCTCTG
p53_RT_PCR_for	ATGGAGGAGCCGAGTCAGATC
p53_RT_PCR_rev	CCATTGTTCAATATCGTCCGGG
PANK1_Northern_for	TTT <u>AAGCTT</u> TGGAAACGCTGGTTAAATTGG
PANK1_Northern_rev	TTT <u>GAATTC</u> CAATGGAGCAATGTTGTTG
PANK1_prom_0.9kbp_for	GCAGGT <u>TACCCT</u> GCGGAGGAGGATGGACTC
PANK1_prom_2kbp_for	GCAGGT <u>TACCCT</u> GTATTCTAGGTTTCTCCCTG
PANK1_prom_2kbp_rev	GCACTCGAGTAAAGACACCCACAAGAAGTAACCAAGTTG
PANK1_prom_Δ1578_for	GCAGGT <u>TACCCT</u> CCAAGGATTAGTATCTCTGGCC
PANK1_prom_Δ1578_rev	GCACTCGAGGGAATCAAGTTCTCTGGGCTT
PANK1_prom_double_mut_for	TGGCGGTGGCGGG <u>AATT</u> ACTGGG <u>AATT</u> CTCAGTGGCGGGGACCAGTCT
PANK1_prom_double_mut_rev	TCCCGCCACTGAG <u>AATT</u> CCCAGT <u>AATT</u> CCCGCCACCGCCACCGACGA
PANK1_prom_single_mut_for	TGGCGGTGGCGGG <u>AATT</u> ACTGGGCATGCTCAGTGGCGGGGACCAGTCT
PANK1_prom_single_mut_rev	TCCCGCCACTGAGCATGCCAGT <u>AATT</u> CCCGCCACCGCCACCGACGA
PANK1_RT_PCR_for	TTCGAAGAGGACTTCAGAATG
PANK1_RT_PCR_rev	TACACGGCTAGAATGCTGAC
PANK1b,g_cDNA_for	GCT <u>GGATCC</u> ATGAAGCTTATAAATGGCAAAAAGC
PANK1b,g_cDNA_rev	GCT <u>CTCGAG</u> CTACTTGTATCAGTCATTTTGAAC
Pri-miRNA-107_RT_PCR_for	GCAAGTCGAGCATTTTACCTGCTG
Pri-miRNA-107_RT_PCR_rev	GCCATGTGTCCACTGAAATGTG
Pri-miRNA-145_RT_PCR_for	TGGATTTGCCTCCTTCCCA
Pri-miRNA-145_RT_PCR_rev	TTGAACCCCTCATCTGTGAGCC
Pri-miRNA-34_RT_PCR_for	CCTCCAAGCCAGCTCAGTTG
Pri-miRNA-34_RT_PCR_rev	TGACTTTGGTCCAATTCCTGTTG
RBL2_site_pGL4_for	GCATCTAG <u>A</u> tgatttcctgacaaaggaga
RBL2_site_pGL4_rev	GCATCTAG <u>A</u> ttttcttagctggttgatcccta