

Figure S1: Intranuclear membrane cisternae contain luminal ER proteins. Cos-7 cells transiently transfected with FLAG-tagged lamin B2 were fixed and stained for lamin B2 with polyclonal rabbit antibodies directed against the FLAG-epitope and FITC-conjugated secondary antibody (green), for KDEL-containing ER proteins with mAb 10C3 and Cy3-conjugated secondary antibody (red), and for DNA with DAPI (blue). The right panels show merged images of all three channels. Serial optical sections (0.8 μm thick) were obtained by confocal fluorescence microscopy of the cell shown in Fig. 4A, Z-stacks are labelled consecutively: z1 top, z11 bottom of the cell. Size bar for all panels 10 μm .

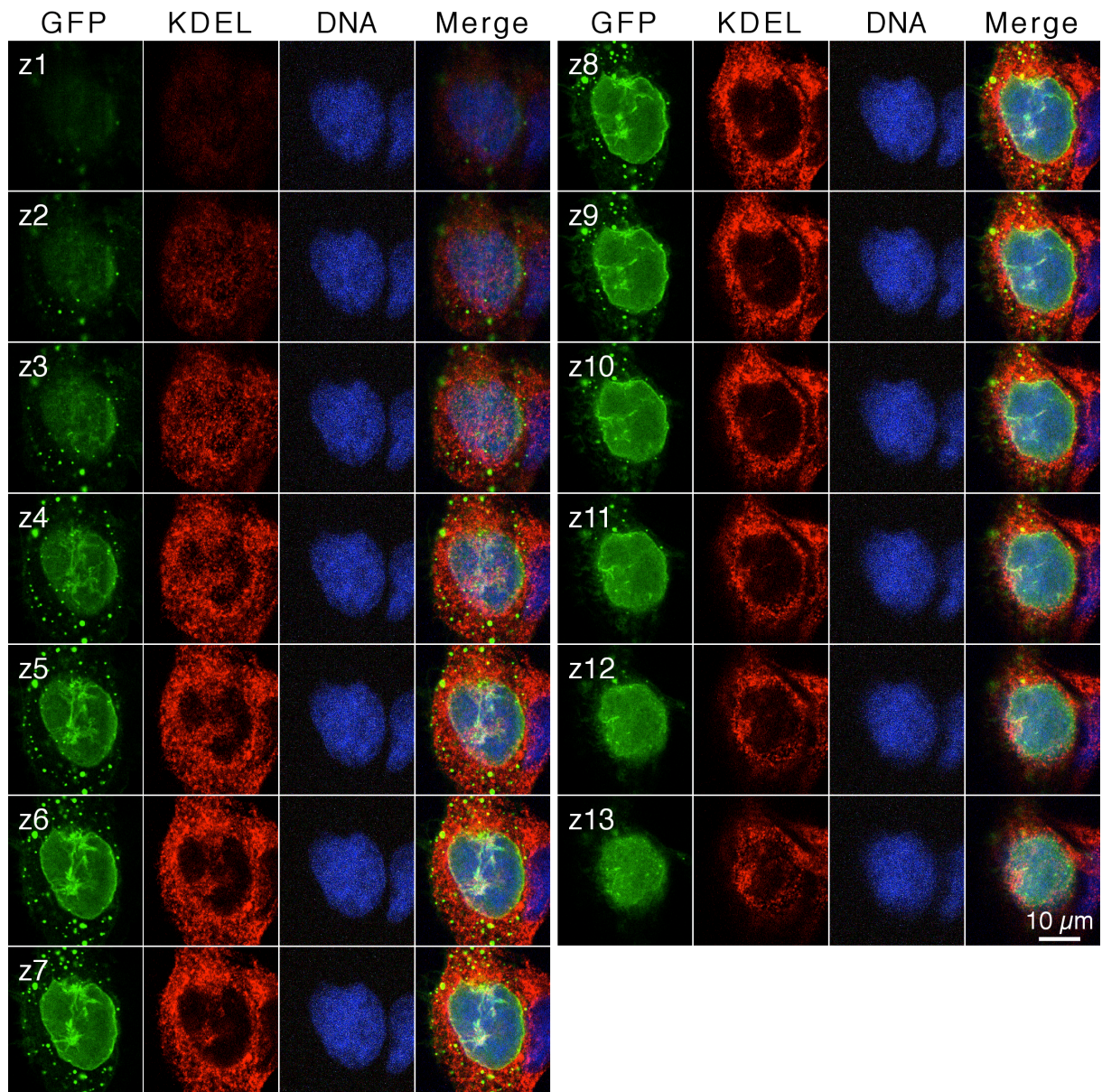


Figure S2: Intranuclear membrane cisternae contain luminal ER proteins. Cos-7 cells transiently transfected with NLS-GFP-Ras were fixed and stained for KDEL-containing ER proteins with mAb 10C3 and Cy3-conjugated secondary antibody (red), and for DNA with DAPI (blue). GFP fluorescence was detected in the green channel. The right panels show merged images of all three channels. Serial optical sections (0.8 μm thick) were obtained by confocal fluorescence microscopy of the cell shown in Fig. 4C, Z-stacks are labelled consecutively: z1 top, z13 bottom of the cell. Size bar for all panels 10 μm .