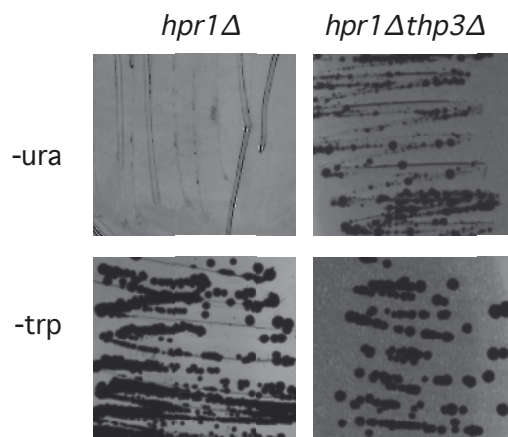
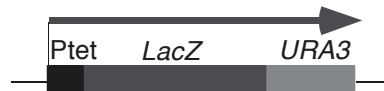
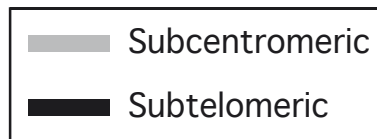
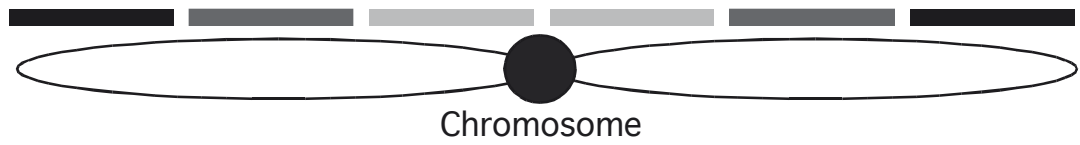


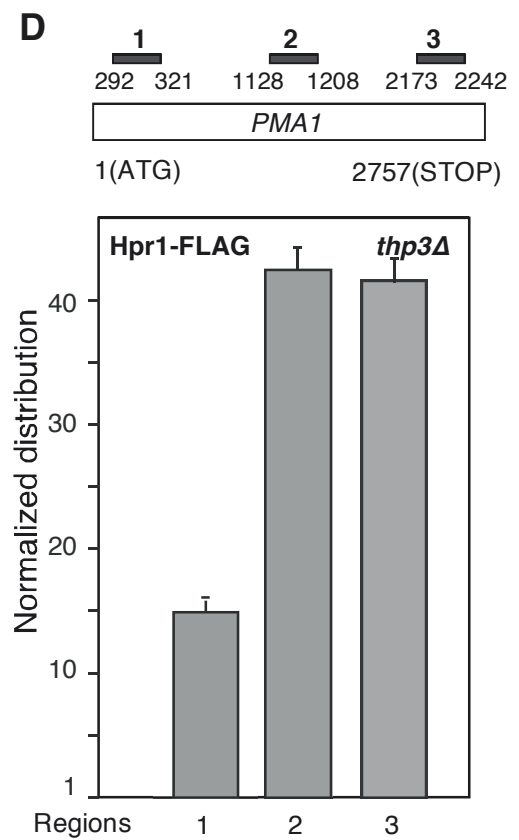
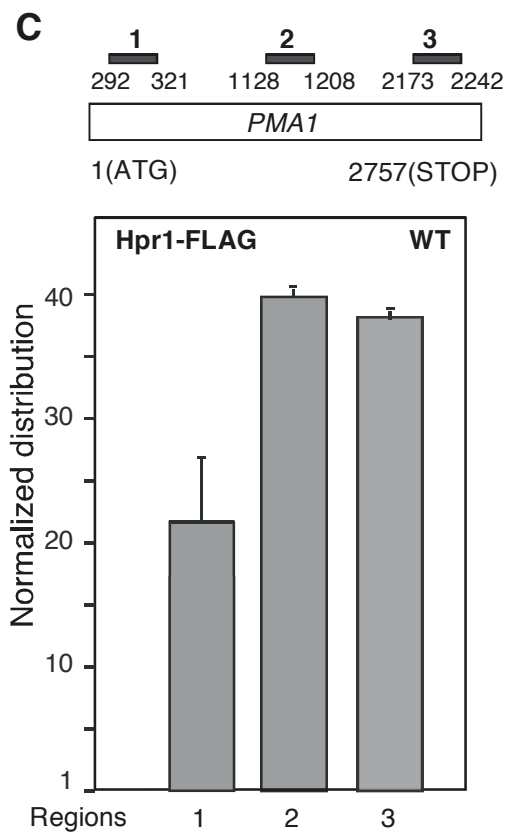
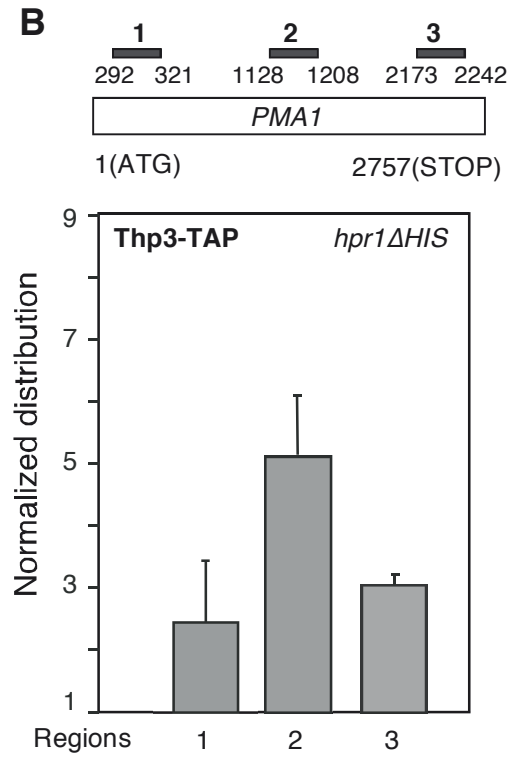
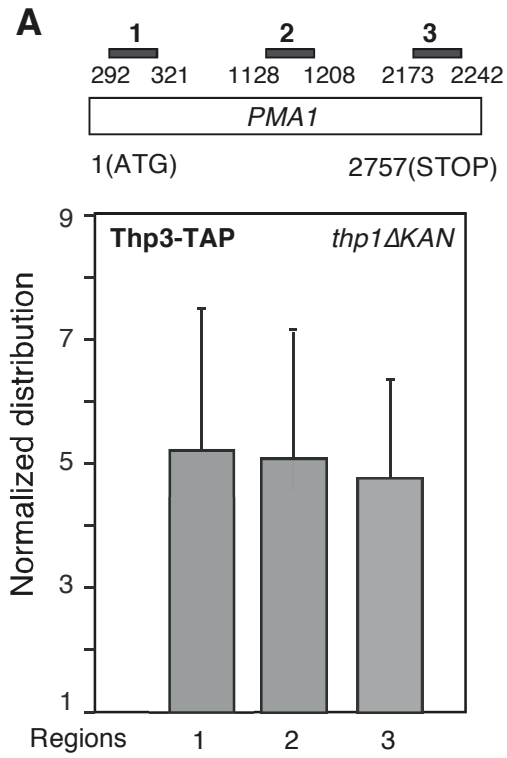
pCM184-LAUR



Jimeno_Fig.S1



Jimeno_Fig.S2



Jimeno_Fig.S3

SUPPLEMENTARY FIGURE LEGENDS

FIG. S1. Suppression of the gene expression phenotype of *hpr1*Δ by *thp3*Δ null mutation. Phenotypic analysis of *hpr1*Δ (U678-1C) and *hpr1*Δ *thp3*Δ (BWMN-3B) congenic strains, transformed with the pLAUR system. The capacity of each strain to form colonies on synthetic medium lacking uracil after four days at 30°C is shown. A scheme of the pLAUR system is shown on top.

FIG. S2. Schematic representation of a chromosome indicating what we have considered sub-centromeric and subtelomeric genes. We have divided each chromosomal arm into three equal parts. Genes that map on the centromeric-distal part are considered sub-telomeric while the genes that map on the proximal one are considered sub-centromeric.

FIG. S3. Recruitment of Thp3-TAP and Hpr1-FLAG to transcribed chromatin in *thp1*Δ and *hpr1*Δ and *thp3*Δ mutants. (A) ChIP analysis at the endogenous *PMA1* gene in *thp1*Δ (BTHT-1D) and *hpr1*Δ (BTHH-6C) mutant strains carrying a TAP-tagged Thp3. Other details as in Fig. 6A (B) ChIP analysis of Hpr1-FLAG in wild-type (SYHPR1) and *thp3*Δ (SYTHP3) congenic strains. Other details as in A.

Table S1. Genes down-regulated in *thp3Δ* mutant. The fold decreases in mRNA levels compared with the wild type, the ORF names and the gene names are shown.

ORF	Gene	Decrease	ORF	Gene	Decrease
YAR031W	PRM9	-1.80	YIR014W	YIR014W	-1.85
YAR068W	YAR068W	-1.82	YIR018C-A	YIR018C-A	-1.54
YAR071W	PHO11	-2.65	YIR030C	DCG1	-1.64
YBL098W	BNA4	-1.72	YKL218C	SRY1	-1.98
YBR005W	RCR1	-1.50	YKL043W	PHD1	-1.56
YBR056W-A	YBR056W-A	-2.01	YLR040C	YLR040C	-2.45
YBR066C	NRG2	-1.75	YLR042C	YLR042C	-1.51
YBR072W	HSP26	-1.72	YLR046C	YLR046C	-1.54
YBR093C	PHO5	-4.59	YLR054C	OSW2	-1.83
YBR157C	ICS2	-1.62	YLR142W	PUT1	-2.21
YCL027W	FUS1	-1.95	YLR231C	BNA5	-2.10
YCL026C-B	HBN1	-1.58	YLR346C	YLR346C	-2.39
YDL039C	PRM7	-3.40	YLR367W	RPS22B	-4.91
YDL038C	YDL038C	-4.15	YML123C	PHO84	-95.90
YDL037C	BSC1	-6.21	YML058W-A	HUG1	-2.07
YDR281C	PHM6	-3.93	YML007C-A	YML007C-A	-1.72
YDR381C-A	YDR381C-A	-1.54	YMR006C	PLB2	-2.27
YDR428C	BNA7	-1.51	YMR013W-A	YMR013W-A	-2.3
YDR453C	TSA2	-1.65	YMR040W	YET2	-1.80
YDR539W	YDR539W	-3.98	YMR081C	ISF1	-1.71
YER011W	TIR1	-2.74	YMR084W	YMR084W	-1.98
YER058W	PET117	-1.63	YMR173W	DDR48	-1.85
YER060W	FCY21	-1.98	YMR266W	RSN1	-1.68
YFL065C	YFL065C	-1.71	YNL217W	YNL217W	-1.62
YGR197C	SNG1	-1.88	YNL093W	YPT53	-2.00
YGR249W	MGA1	-1.69	YNL040W	YNL040W	-4.49
YHR092C	HXT4	-1.62	YNL009W	IDP3	-1.50
YHR136C	SPL2	-15.20	YNR044W	AGA1	-2.79
YHR140W	YHR140W	-1.53	YNR050C	LYS9	-1.56

ORF	Gene	Decrease
YNR060W	FRE4	-3.62
YOL158C	ENB1	-3
YOL058W	ARG1	-3.05
YOL014W	YOL014W	-1.7
YOL013W-B	YOL013W-B	-1.51
YOR049C	RSB1	-1.79
YOR071C	NRT1	-1.52
YOR072W-B	YOR072W-B	-1.92
YOR236W	DFR1	-1.55
YOR306C	MCH5	-2.27
YOR315W	SFG1	-1.88
YOR385W	YOR385W	-1.78
YPL156C	PRM4	-1.60
YPL134C	ODC1	-1.51
YPL019C	VTC3	-2.44
YPR043W	RPL43A	-4.98
YPR108W-A	YPR108W-A	-2.17
YPR116W	YPR116W	-1.7

1 **Table S2.** Genes down-regulated in *thp3Δ*, *tho2* and *thp1Δ* mutants. The ORF names, gene
 2 names and relative chromosomal localizations are shown.

ORF	Gene name	Localization
YBL098W	BNA4	Subtelomeric
YBR005W	RCR1	Subcentromeric
YBR093C	PHO5	Medial
YDL037C	BSC1	Subcentromeric
YDL038C	YDL038C	Subcentromeric
YDL039C	PRM7	Subcentromeric
YDR428C	BNA7	Subtelomeric
YDR453C	TSA2	Subtelomeric
YDR539W	YDR539W	Subtelomeric
YER058W	PET117	Subcentromeric
YER060W	FCY21	Subcentromeric
YKL218C	SRY1	Subtelomeric
YLR040C	YLR040C	Subcentromeric
YLR142W	PUT1	Subcentromeric
YML123C	PHO84	Subtelomeric
YMR006C	PLB2	Subcentromeric
YMR040W	YET2	Subcentromeric
YNL040W	YNL040W	Subcentromeric
YNL217W	YNL217W	Subcentromeric
YNR060W	FRE4	Subtelomeric
YOL014W	YOL014W	Subcentromeric
YOL158C	ENB1	Subtelomeric
YOR236W	DFR1	Medial
YOR315W	SFG1	Subtelomeric
YOR385W	YOR385W	Subtelomeric
YPL019C	VTC3	Subcentromeric

3

