

Supporting Information

Kumasawa et al. 10.1073/pnas.1011293108

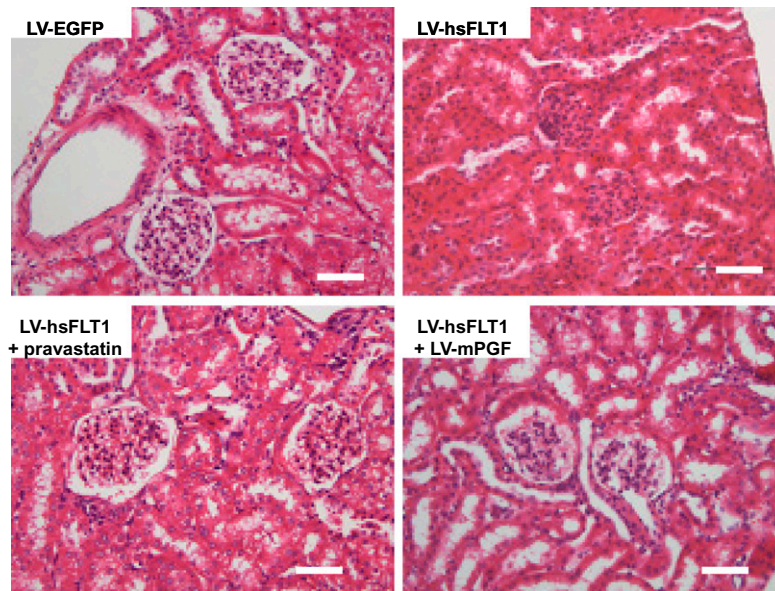


Fig. S1. Restored glomerular sclerosis in preeclampsia by pravastatin treatment or *mPgf* overexpression. Glomerular sclerosis was observed in the females carrying LV-hsFLT1-transduced placentas. The kidney was collected at E18.5, and the sections were stained with H&E. The symptoms were rescued by pravastatin treatment or placenta-specific *mPgf* expression. (Scale bar = 50 μ m.)

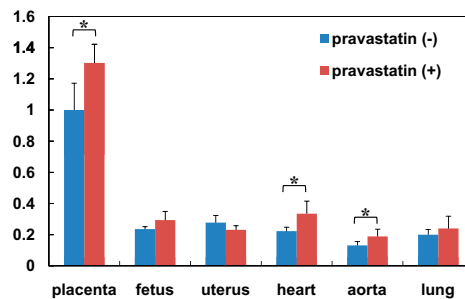


Fig. S2. Pravastatin induced *mPgf* expression in various tissues. Pravastatin (5 μ g/d) was i.p. administered into the pregnant females every day from E7.5, and then the *mPgf* mRNA amounts in total RNA were measured by quantitative RT-PCR at E13.5 ($n = 4$). Pravastatin significantly increased the *mPgf* mRNA in placenta, heart, and aorta (* $P < 0.05$).

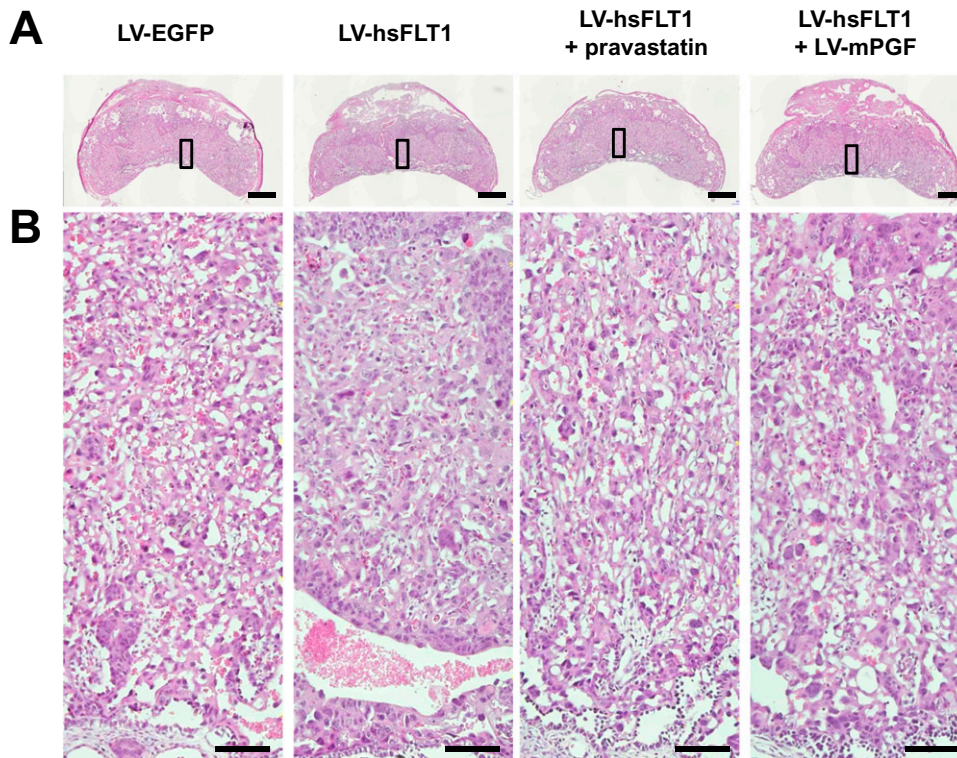


Fig. S3. Restored placentation by pravastatin treatment or *mPgf* overexpression. The placenta was collected at E13.5, and the sections were stained with H&E. Labyrinthine area in *A* is magnified in *B*. The maternal and fetal blood spaces were reduced in the labyrinthine layer of the LV-hsFLT1–transduced placenta. The phenotypes were rescued by pravastatin treatment or placenta-specific *mPgf* expression. (Scale bar = 1 mm in *A* and 100 μ m in *B*.)

Table S1. Implantation and birth rate

Lentiviral vector	<i>n</i>	Transferred	Implanted, %	Born, %
LV-EGFP	11	220	99 (45.0 \pm 1.8)	82 (37.3 \pm 1.7)
LV-hsFLT1	11	220	100 (45.5 \pm 2.0)	85 (38.6 \pm 2.5)
LV-hsFLT1 + pravastatin	10	200	89 (44.5 \pm 0.9)	76 (38.0 \pm 1.0)
LV-hsFLT1 + LV-mPGF	12	240	108 (45.0 \pm 1.2)	90 (37.5 \pm 1.3)

Blastocysts were transduced with lentiviral vectors at 100 ng of p24/mL. Pravastatin was administered at 5 μ g per body every day starting at E7.5. Implantation rate was analyzed at E13.5 (average \pm SEM). Student's *t* test was performed against LV-EGFP treatment.

Table S2. Liver enzymes

Lentiviral vector	<i>n</i>	Aspartate transaminase average, U/mL	<i>P</i>	<i>n</i>	Alanine transaminase average, U/mL	<i>P</i>
LV-EGFP	9	85 \pm 16.2	—	9	27.7 \pm 3.0	—
LV-hsFLT1	10	190 \pm 64.5	0.15	10	32.1 \pm 9.7	0.68
LV-hsFLT1 + pravastatin	9	113 \pm 13.3	0.21	9	28.9 \pm 3.7	0.80
LV-hsFLT1 + LV-mPGF	13	124 \pm 23.0	0.23	12	32.4 \pm 6.7	0.57

Blastocysts were transduced with lentiviral vectors at 100 ng of p24/mL. Pravastatin was administered at 5 μ g per body every day starting at E7.5. Blood samples were collected at E18.5 and analyzed (average \pm SEM). Student's *t* test was performed against LV-EGFP treatment.