

SUPPLEMENTARY DATA

Table of Contents

Supplementary Figure 1

Supplementary Table S1

Supplementary Table S2

Figure S1 *Drosophila* Piwi proteins are not colocalized with Yb.

Immunofluorescent co-staining of Flag-Yb (green) and Piwi (A), Ago3 (B) and Aub (C) (red) in 5xFlag-Yb transgenic germaria and early stage egg chambers. DNA was labeled by DAPI (blue).

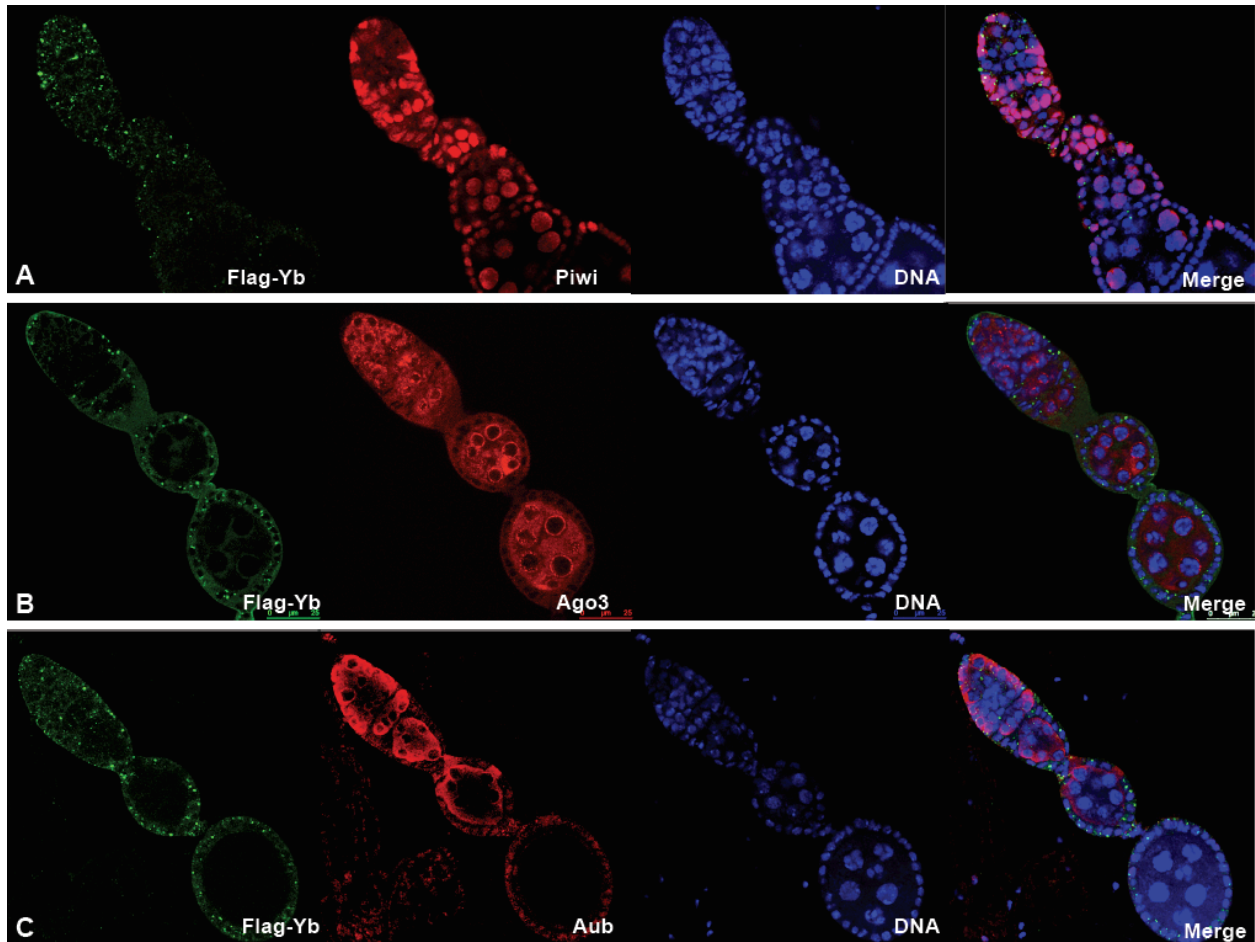


Table S1 Small RNA profiles of *Yb* mutant and wild-type ovaries.

Types of small RNAs	WT	Yb mutant	Yb mutant(normalized)
Total small RNAs (after removal of linker)	20,142,424	15,375,387	39,499,056
Genomic-matched small RNAs	17,872,442	14,263,153	36,641,749
Cellular RNAs-filtered small RNAs	10,112,172	3,455,747	8,877,743
microRNA-matched small RNAs	2,772,692	1,079,297	2,772,692
Transposon-derived 23-28nt small RNAs	4,673,835	1,415,873	3,637,348
Transposon-derived 21nt small RNAs	203,020	97,027	249,260
Small RNAs uniquely mapped to 42AB	208,826	73,065	187,702
Small RNAs uniquely mapped to Flamenco	106,065	1,356	3,483

Table S2 miRNA profiles of *Yb* mutant and wild-type ovaries.

miRNAs	Number of reads from WT	Number of reads from <i>Yb</i> mutant	<i>Yb</i> mutant Normalized
dme-mir-989	791774	170239	434976.4064
dme-mir-184	701676	292527	747433.5684
dme-mir-9c	290339	114628	292885.1527
dme-mir-263a	273257	108199	276458.4625
dme-mir-1	140863	122840	313867.573
dme-mir-318	83237	14870	37994.22673
dme-mir-317	63398	70577	180330.7693
dme-mir-9b	50460	17892	45715.71651
dme-bantam	46332	13739	35104.41701
dme-mir-8	42832	14484	37007.96099
dme-mir-283	40911	6873	17561.15133
dme-mir-305	24740	12610	32219.71749
dme-mir-12	23931	8073	20627.26243
dme-mir-312	20292	9187	23473.63557
dme-let-7	20084	11898	30400.49157
dme-mir-994	19723	6696	17108.89994
dme-mir-33	14696	4763	12169.90598
dme-mir-276a	13081	18953	48426.66975
dme-mir-11	11909	4271	10912.80043
dme-mir-986	9231	10	25.55092584
dme-mir-13b-2	7601	3709	9476.838394
dme-mir-13b-1	7343	3655	9338.863395
dme-mir-31b	7017	2474	6321.299053
dme-mir-275	5861	4732	12090.69811
dme-mir-14	5238	6781	17326.08281
dme-mir-2b-2	4274	4038	10317.46385
dme-mir-2b-1	4167	4023	10279.13747
dme-mir-311	4114	1363	3482.591192
dme-mir-282	3960	1016	2595.974065
dme-mir-92b	3841	1283	3278.183785
dme-mir-2a-2	3307	3143	8030.655992
dme-mir-2a-1	3113	2964	7573.294419
dme-mir-279	3112	1423	3635.896747
dme-mir-306	3072	3066	7833.913863
dme-mir-284	2762	2840	7256.462939
dme-mir-996	2628	1069	2731.393972
dme-mir-92a	2481	934	2386.456474
dme-mir-286	2338	2331	5955.920814
dme-mir-988	2323	1104	2820.822213
dme-mir-281-2	2006	595	1520.280088
dme-mir-31a	1813	841	2148.832863
dme-mir-7	1552	568	1451.292588
dme-mir-965	1506	363	927.498608
dme-mir-281-1	1379	339	866.176386
dme-mir-9a	1290	378	965.8249968
dme-mir-5	1256	1015	2593.418973
dme-mir-999	1250	1076	2749.279621
dme-mir-1010	1099	181	462.4717577

dme-mir-100	1098	414	1057.80833
dme-mir-983-1	1097	1267	3237.302304
dme-mir-983-2	1097	1267	3237.302304
dme-mir-304	1076	427	1091.024533
dme-mir-316	982	1122	2866.813879
dme-mir-79	979	328	838.0703676
dme-mir-190	958	140	357.7129618
dme-mir-995	848	414	1057.80833
dme-mir-1012	763	491	1254.550459
dme-mir-34	651	1519	3881.185635
dme-mir-998	590	199	508.4634242
dme-mir-10	502	117	298.9458323
dme-mir-970	456	311	794.6337937
dme-mir-277	335	419	1070.583793
dme-mir-315	330	3	7.665277752
dme-mir-278	306	211	539.1245352
dme-mir-960	259	120	306.6111101
dme-mir-1005	233	103	263.1745362
dme-mir-313	195	144	367.9333321
dme-mir-310	193	194	495.6879613
dme-mir-956	176	34	86.87314786
dme-mir-87	165	378	965.8249968
dme-mir-308	150	21	53.65694427
dme-mir-1003	143	47	120.0893515
dme-mir-959	143	90	229.9583326
dme-mir-6-1	118	124	316.8314804
dme-mir-6-2	115	124	316.8314804
dme-mir-125	114	63	160.9708328
dme-mir-276b	112	65	166.081018
dme-mir-iab-4	103	47	120.0893515
dme-mir-iab-4as	103	47	120.0893515
dme-mir-6-3	99	104	265.7296287
dme-mir-958	65	1	2.555092584
dme-mir-1006	64	26	66.43240719
dme-mir-2c	64	70	178.8564809
dme-mir-1013	62	37	94.53842561
dme-mir-263b	53	8	20.44074067
dme-mir-987	50	25	63.8773146
dme-mir-961	43	16	40.88148135
dme-mir-375	42	70	178.8564809
dme-mir-1008	41	14	35.77129618
dme-mir-314	41	7	17.88564809
dme-mir-193	38	13	33.21620359
dme-mir-307	37	118	301.5009249
dme-mir-307-as	37	118	301.5009249
dme-mir-982	37	117	298.9458323
dme-mir-137	36	14	35.77129618
dme-mir-4	29	17	43.43657393
dme-mir-927	29	7	17.88564809
dme-mir-962	29	12	30.66111101
dme-mir-1009	28	12	30.66111101
dme-mir-252	25	23	58.76712943
dme-mir-932	25	12	30.66111101
dme-mir-1000	21	16	40.88148135

dme-mir-1002	20	3	7.665277752
dme-mir-1007	19	7	17.88564809
dme-mir-954	19	15	38.32638876
dme-mir-2489	18	18	45.99166651
dme-mir-964	18	9	22.99583326
dme-mir-991	16	38	97.0935182
dme-mir-274	15	7	17.88564809
dme-mir-963	15	5	12.77546292
dme-mir-966	9	19	48.5467591
dme-mir-967	9	1	2.555092584
dme-mir-976	9	11	28.10601843
dme-mir-124	8	1	2.555092584
dme-mir-13a	8	1	2.555092584
dme-mir-1001	7	4	10.22037034
dme-mir-980	7	4	10.22037034
dme-mir-1015	6	3	7.665277752
dme-mir-984	6	18	45.99166651
dme-mir-2279	4	4	10.22037034
dme-mir-2497	4	0	0
dme-mir-2501	4	0	0
dme-mir-957	4	29	74.09768494
dme-mir-981	4	3	7.665277752
dme-mir-2283	3	1	2.555092584
dme-mir-3	3	14	35.77129618
dme-mir-929	3	3	7.665277752
dme-mir-969	3	2	5.110185168
dme-mir-1016	2	1	2.555092584
dme-mir-2490	2	0	0
dme-mir-955	2	0	0
dme-mir-1014	1	0	0
dme-mir-133	1	2	5.110185168
dme-mir-2282	1	1	2.555092584
dme-mir-2493	1	0	0
dme-mir-972	1	3	7.665277752
dme-mir-975	1	0	0
dme-mir-977	1	1	2.555092584
dme-mir-985	1	0	0
dme-mir-992	1	0	0
dme-mir-2496	0	1	2.555092584
dme-mir-2500	0	4	10.22037034
dme-mir-303	0	2	5.110185168
dme-mir-968	0	2	5.110185168
dme-mir-973	0	2	5.110185168
dme-mir-978	0	1	2.555092584
Total	2790110	1091980	2790110