

K. Singh et al.

The Apolipoprotein E-Mimetic Peptide COG112 Inhibits NF- κ B Signaling, Proinflammatory Cytokine Expression, and Disease Activity in Murine Models of Colitis

SUPPLEMENTARY FIGURES:

FIGURE S1. Effect of COG112 (10 mg/kg) on C57BL/6J mice given 4% DSS. Mice received normal drinking water DSS in the drinking water starting at day 0 until day 7. COG112 (10 mg/kg) or PBS was injected (i.p.) every day. Body weights were measured every day and are presented as % of starting body weight. *, $p < 0.05$ versus DSS-treated only. $n = 5$ for control, $n = 5$ for control + COG112, $n = 10$ for DSS and $n = 10$ for DSS + COG112.

FIGURE S2. Effect of COG112 (1 mg/kg) on C57BL/6J mice given 3% DSS. Mice were given 3% DSS in the drinking water or drinking water only, from day 0 until day 7. COG112 or PBS was injected (i.p.) every day. Body weights were measured every day and are presented as % of starting body weight, **, $p < 0.01$ versus DSS only. $n = 5$ for control, $n = 5$ for control + COG112, $n = 10$ for DSS, and $n = 10$ for DSS + COG112.

FIGURE S3. Isolation of colonic epithelial cells. Representative plot of flow cytometric analysis of staining for the epithelial cell marker E-cadherin in cells isolated from normal mouse colon by dispersion with DTT + EDTA, followed by filtration. The right quadrant represents the % positive cells when stained with IgG isotype control or polyclonal antibody to mouse E-cadherin.

FIGURE S4. Confocal immunofluorescence of p65 in *C. rodentium*-induced colitis- effect of COG112. Swiss-rolled sections (5 μ m) were stained for p65 detected with Alexa Fluor 488-conjugated secondary antibody (green) after antigen retrieval as described in experimental procedures. Nuclei were stained with DAPI (blue). Single channel images were captured by confocal microscopy and 600X images are shown. Scale bar = 20 μ m.

FIGURE S5. Confocal immunofluorescence of p65 in DSS-induced colitis- effect of COG112. Swiss-rolled sections (5 μ m) were stained for p65 detected with Alexa Fluor 488-conjugated secondary antibody (green) after antigen retrieval as described in experimental procedures. Nuclei were stained with DAPI (blue). Single channel images were captured by confocal microscopy and 600X images are shown. Scale bar = 20 μ m.

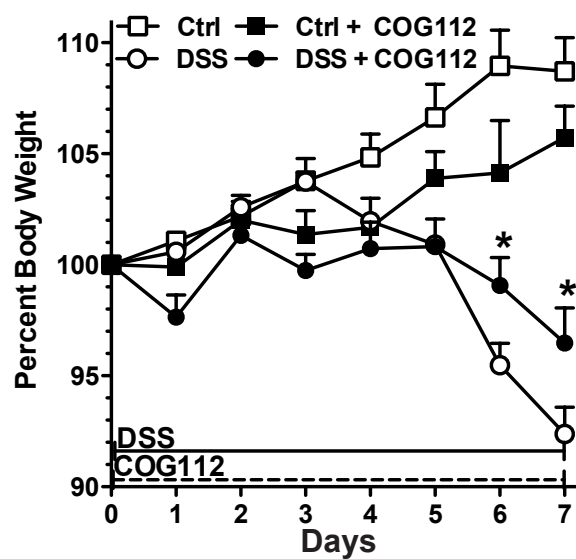


Fig. S1

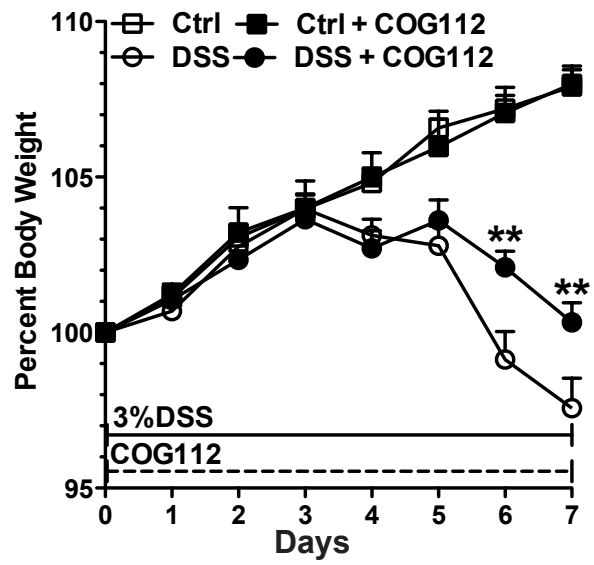


Fig. S2

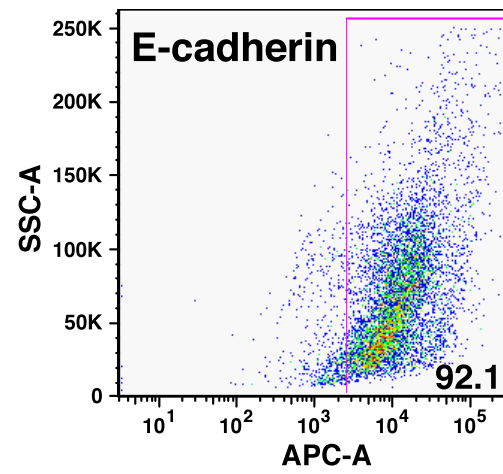
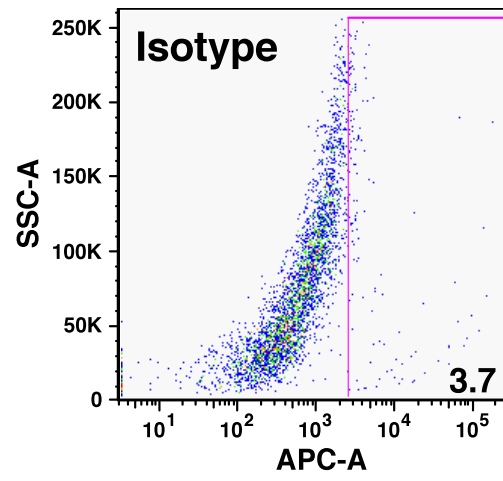


Fig. S3

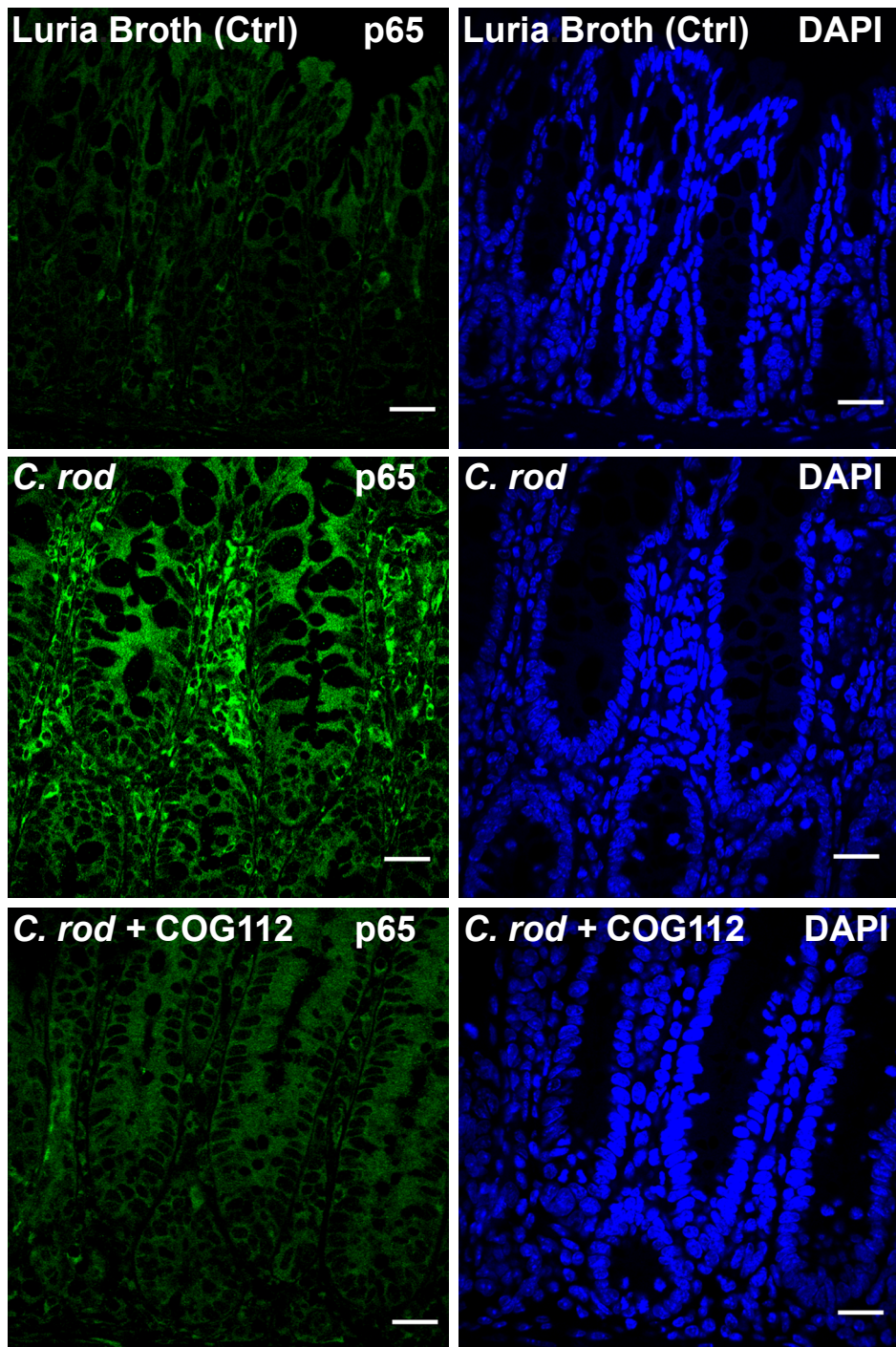


Fig. S4

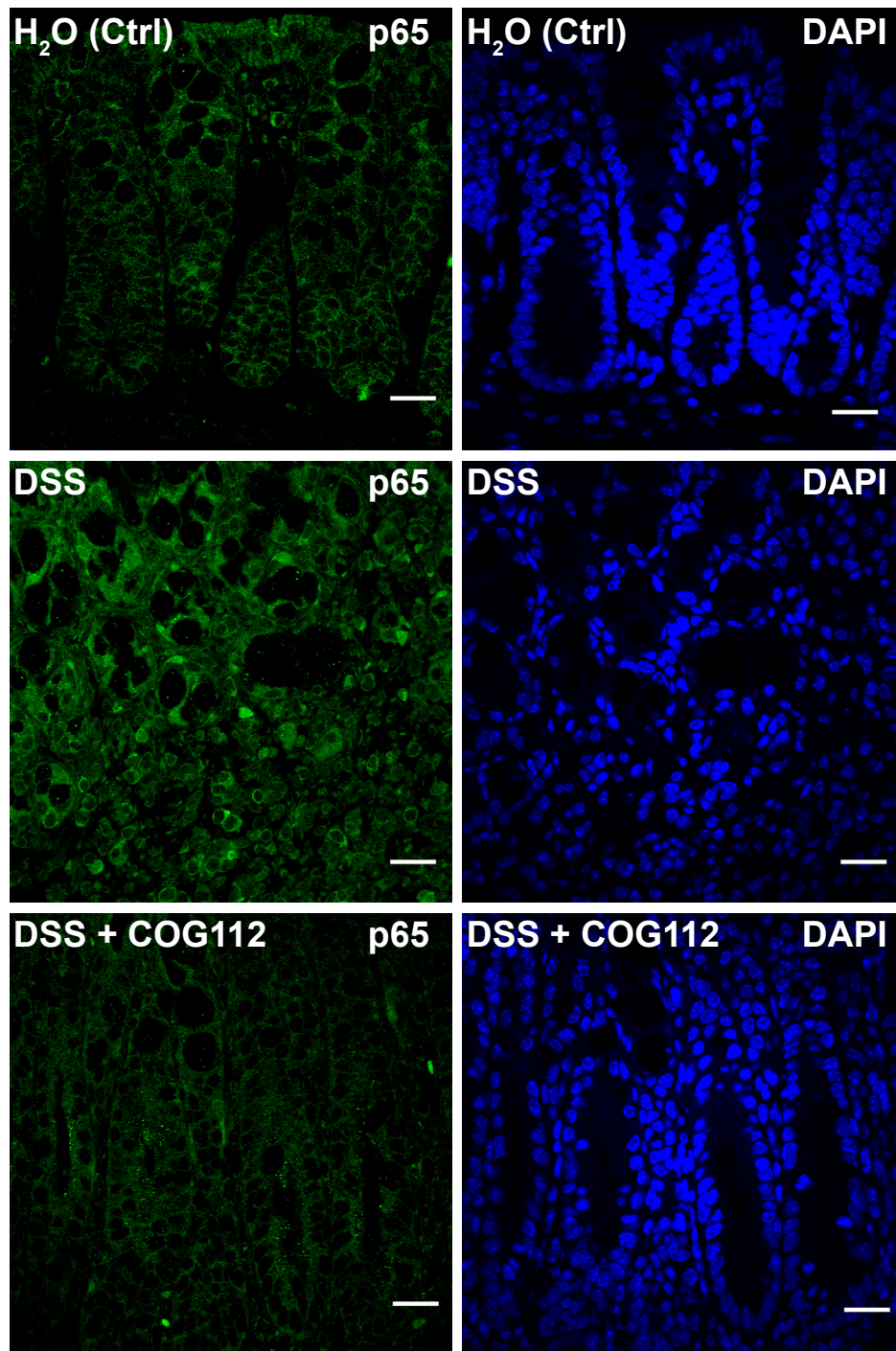


Fig. S5