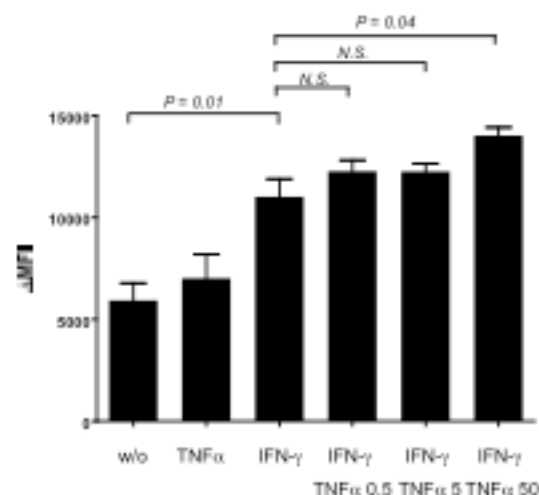
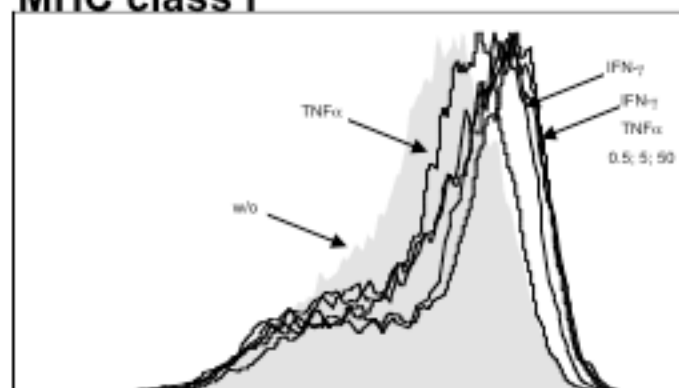
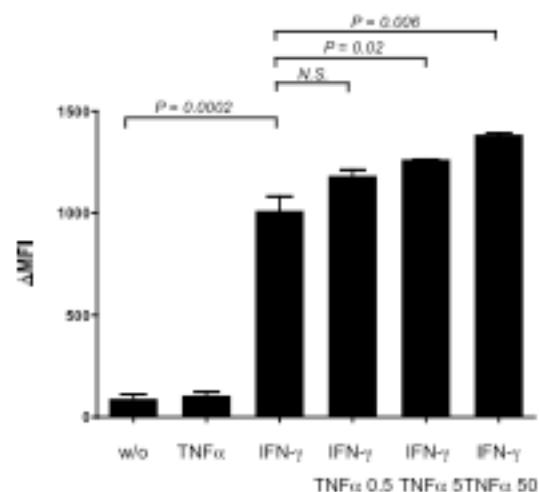
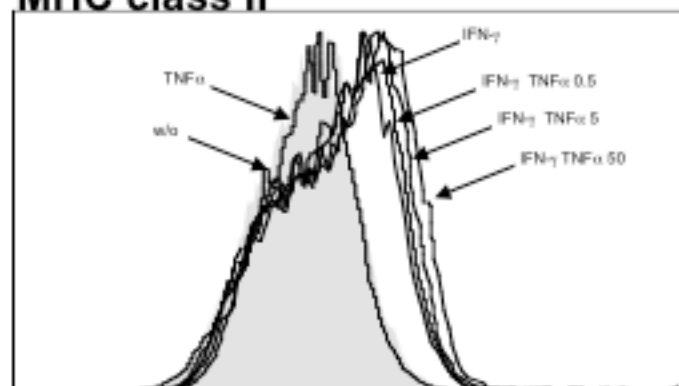
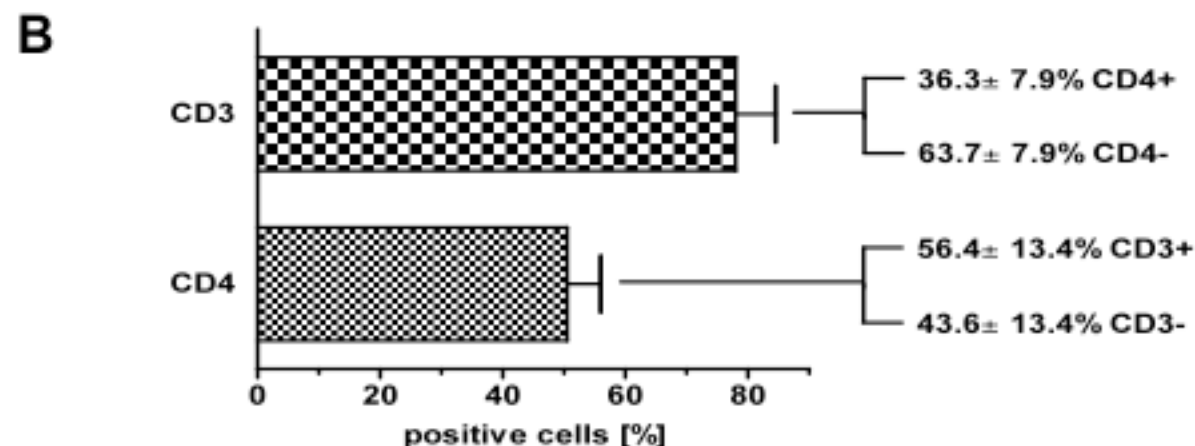
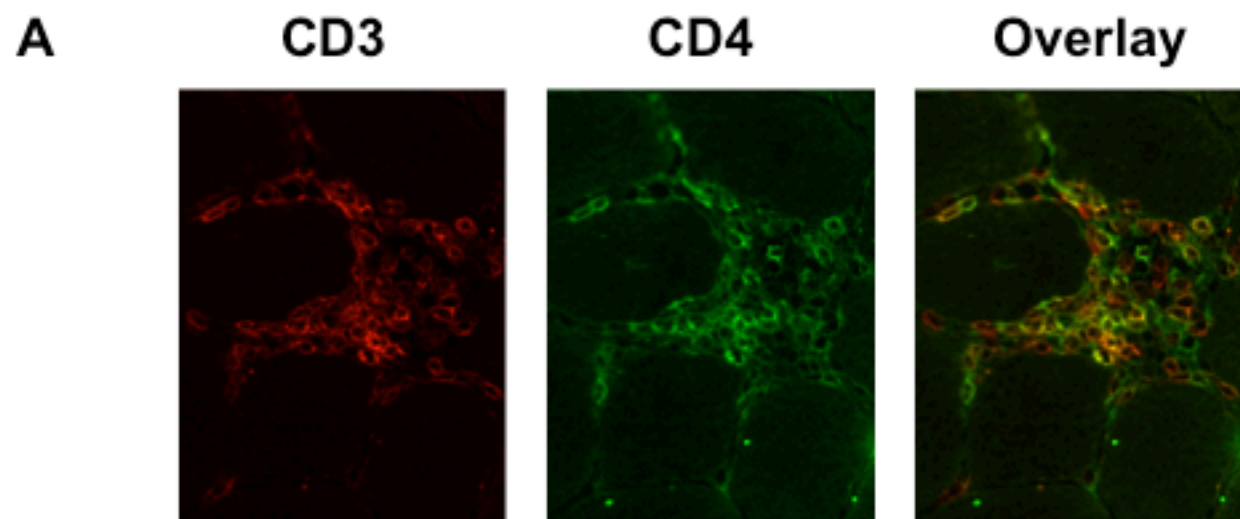


A**MHC class I****B****MHC class II**

Supplementary Figure 1. Titration Experiments on TNF- α Mediated MHC Regulation. Suppl. Fig. 1A: An additive effect of on HLA-A, -B, -C expression in human myoblasts exposed to IFN- γ was detectable at concentrations of 50 ng/ml. **Suppl. Fig. 1B:** By contrast, TNF- α augmented IFN- γ induced HLA-DR surface expression at a concentration of 5 ng/ml. Diagrams display means and SEM of MHC expression levels from 3 independent experiments. MHC expression levels were analyzed using the paired t-test.

Suppl. Fig. 2



Supplementary Figure 2. The majority of CD4⁺ immune cells within inflammatory infiltrates in sIBM tissue are T cells. **Suppl. Fig. 2A:** Double-immunofluorescent staining of a representative skeletal muscle from a patient with sIBM immunostained for CD3 and CD4. Photomicroscopy using a 40x objective. **Fig. 7B:** Quantitative double-labeling analysis of a total of 2490 immune cells in skeletal muscle from 10 patients with sIBM stained for CD3 and CD4. Values indicate the mean +SD of cells positive for each marker.