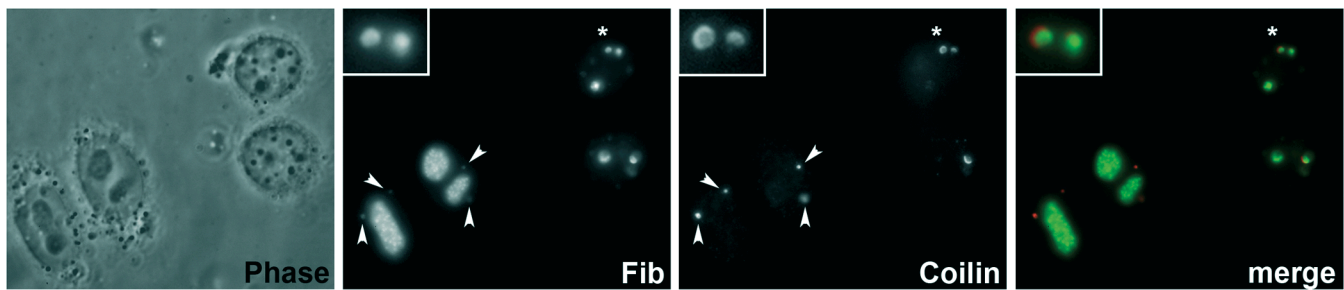
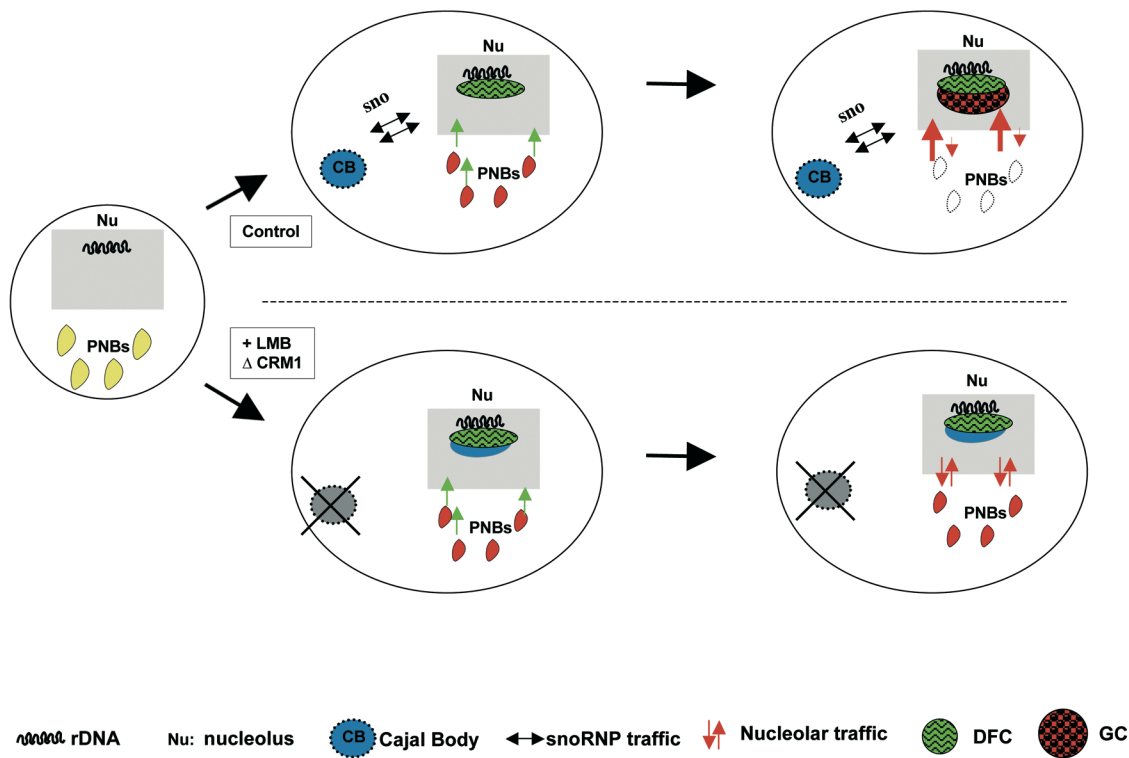


**Figure S1.** Transfer of PAGFP nucleolar protein activated (green after flash) in one incipient nucleolus during nucleolar assembly. Two cases are observed corresponding either to DFC proteins (fibrillarin) or GC proteins (B23/NPM) as described in the results.



**Figure S2.** Interphase cells (left) and early G1a (right) cells treated 2 h with LMB (phase). CBs contain both fibrillarin and coilin (arrow-heads) in interphase. No CB in early G1a, coilin forms a cap around fibrillarin (asterisks and enlarged images) in incipient nucleoli.



**Figure S3.** Cross talk between the assembly of nucleoli and CBs depending on CRM1 at exit of mitosis.