

Figure S1. BR cell lines show overexpression of PSMB5 protein

PSMB5 expression in cytosolic fractions from PT and BR cell lines assessed by Western blot. PSMB5 expression ratio between PT and BR cells was calculated by densitometry using β -actin as a loading control.

Figure S2. Absence of described PSMB5 mutations in HBL2 and JEKO BR

PSMB5 gene was sequenced in HBL2 BR and JEKO BR. The nucleotides (322, 323, 326) where mutations have been described in other BR cell lines are marked with a red arrow.

Figure S1

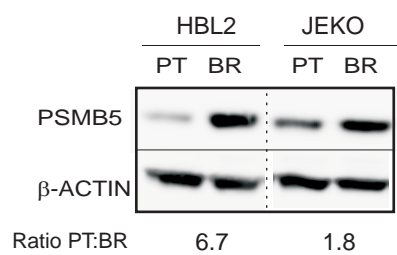
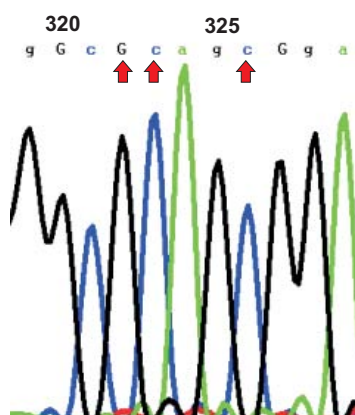


Figure S2

HBL2-BR



JEKO-BR

