

Supplementary Data

Figure S1. PI3K inhibitors do not affect autophagy induced by GX15-070.

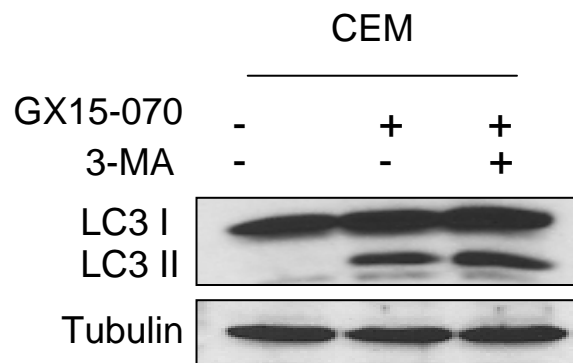
CEM cells were treated with 100 nM GX15-070 \pm 3-MA (5 mM) (a) or \pm LY294002 (10, 50 μ M) (b) for 24h. Cell lysates were subjected to Western blot analyses to detect LC3 conversion.

Figure S2. Anti-apoptotic BCL-2 family proteins are overexpressed in Dex-resistant T-ALL cells.

The level of MCL-1, BCL-X_L, and BCL-2 were determined by Western blotting in CEM (Dex-sensitive) or Molt-4, Reh, HSB-2, and Jurkat (Dex-resistant) cells.

Figure S1

a



b

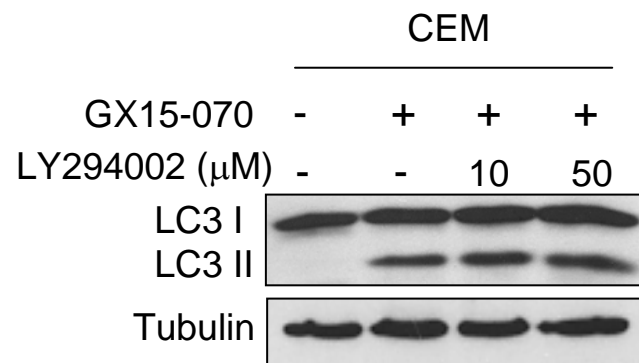


Figure S2

