

## Supplemental Information

## The Structure of the Talin/Integrin Complex

## at a Lipid Bilayer: An NMR and MD Simulation Study

Antreas C. Kalli, Kate L. Wegener, Benjamin T. Goult, Nicholas J. Anthis, Iain D. Campbell, and Mark S.P. Sansom

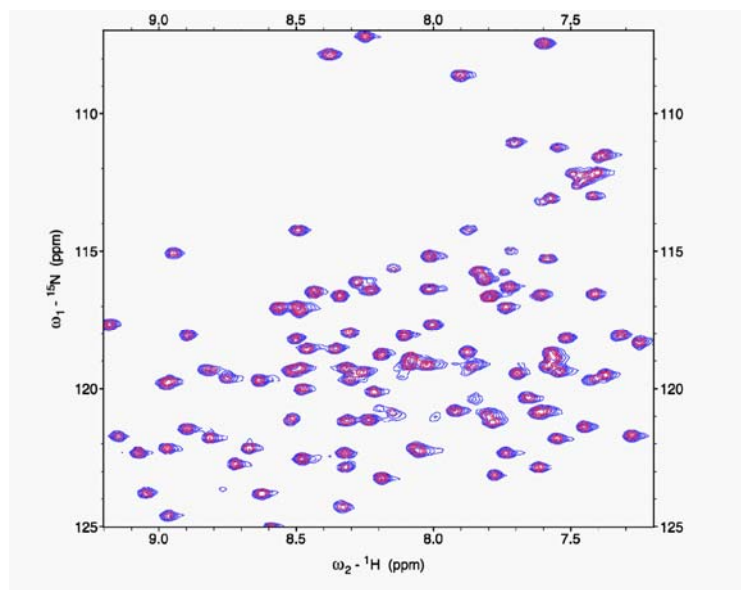


Figure S1, related to Figure 2:

Overlaid  $^1\text{H}$ - $^{15}\text{N}$ -HSQC NMR spectra of the F2-4E domain in the absence (blue) and F2-4E in the presence (red) of DMPS liposomes at a concentration of 100  $\mu\text{M}$ . The figure shows that the shifts of the peaks induced by the addition of DMPS liposomes were very small.

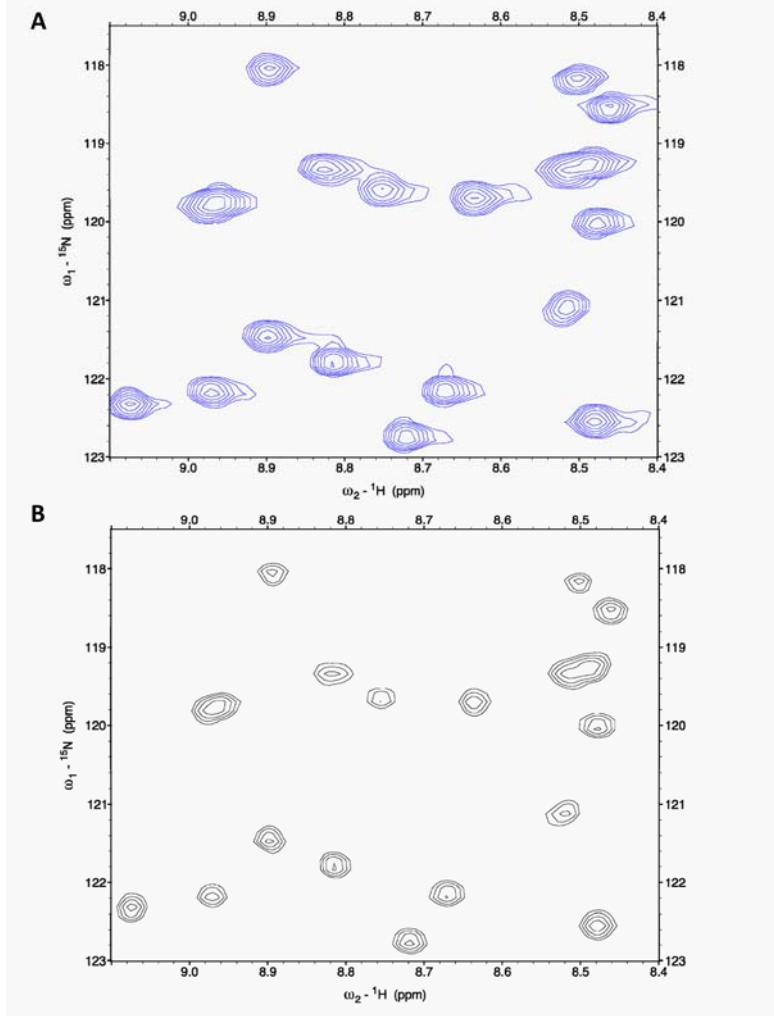


Figure S2, related to Figure 2:

$^1\text{H}$ - $^{15}\text{N}$ -HSQC NMR spectra of the F2-4E A in the absence of and **B** in the presence of DMPS liposomes (100  $\mu\text{M}$ ) showing the reduction of the intensities upon the addition of liposomes.