

Supporting information

Fischer et al. 10.1073/pnas.1008695108

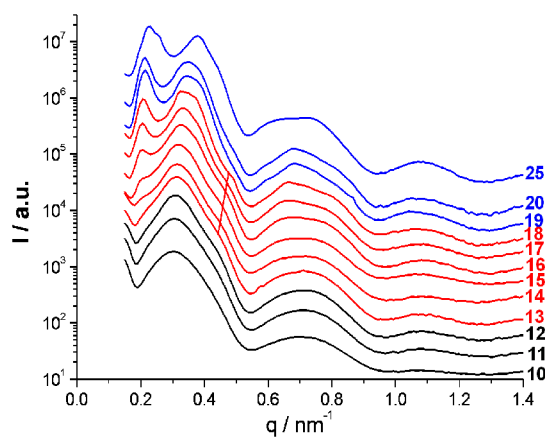


Fig. S1. Scattering curves of lyotropic phases of $\text{PI}_{30}\text{-PEO}_{124}$ [poly(isoprene-*b*-ethylene oxide)] in the concentration range of 10–25%. The scattering curves between 13 and 18% are characterized by a pronounced suppression of the first order reflection concomitant with the presence of a pronounced shoulder at $q = 0.45 \text{ nm}^{-1}$ indicated by the red line.

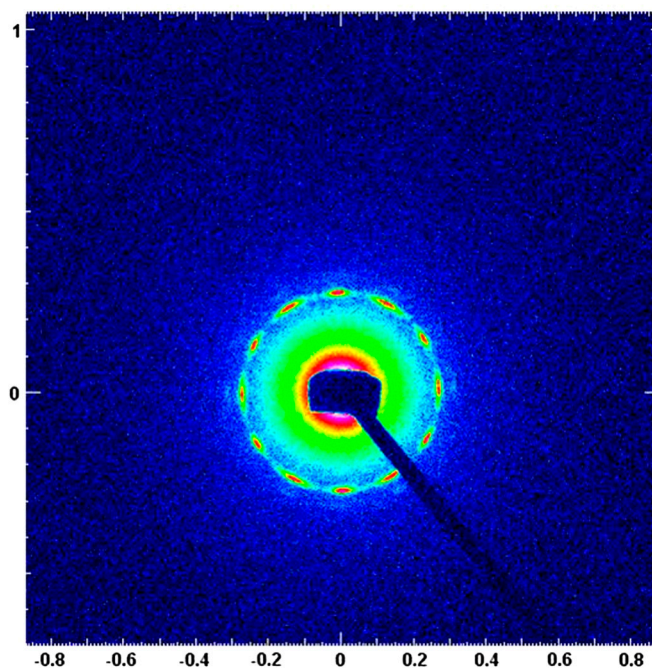


Fig. S2. Diffraction pattern of the Q12 phase measured with synchrotron small-angle X-ray scattering using a larger area detector (MAR CCD) to cover all 12 reflections.