

Supporting Information

Kim et al. 10.1073/pnas.1018974108

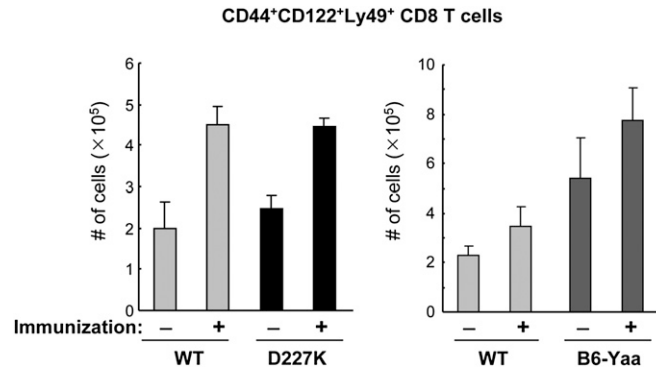


Fig S1. Number of CD44⁺CD122⁺Ly49⁺ CD8 cells in B6(WT), B6.Qa-1(D227K), and B6-Yaa mice. At 7 d after i.p. immunization with 100 μ g of KLH in CFA, the number of CD44⁺CD122⁺Ly49⁺ CD8 T cells was measured in spleen cells from 2-mo-old B6(WT), B6.Qa-1(D227K), and B6-Yaa mice and nonimmunized controls.

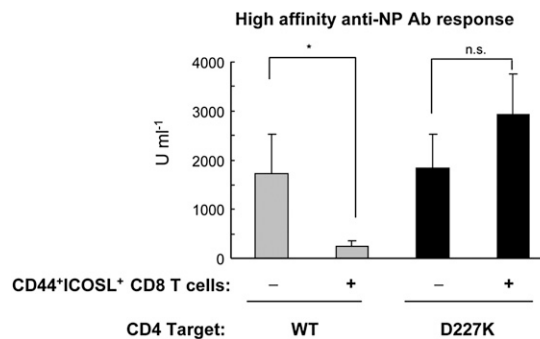


Fig. S2. Suppressive activity by CD44⁺ICOSL⁺ CD8⁺ T cells. Ab response after transfer of B, CD4, and CD8 cells into *Rag2*^{-/-} hosts. Here 2×10^6 WT naïve B cells were transferred along with 0.5×10^6 CD25⁺-depleted CD4 cells from B6.Qa-1(WT) or B6.Qa-1(D227K) mice into *Rag2*^{-/-} hosts. CD44⁺ICOSL⁺ CD8⁺ T cells were sorted by FACS from spleen cells of KLH/CFA-immunized WT (B6) mice, and 0.15×10^6 sorted CD44⁺ICOSL⁺ CD8 cells were transferred into *Rag2*^{-/-} hosts. Immediately after cell transfer, the *Rag2*^{-/-} hosts were immunized i.p. with 100 μ g of NP19-KLH in CFA. At day 10, mice were challenged i.p. with 50 μ g of NP₁₉-KLH in IFA, and high-affinity NP-specific Ab responses were measured by ELISA 7 d later.