

Supporting Information File

Modeling the Effect of Oxygen on the Amperometric Response of Immobilized Organoselenium-Based S-Nitrosothiol Sensors

Lajos Höfler and Mark E. Meyerhoff

Department of Chemistry, The University of Michigan, 930 N. University, Ann Arbor, MI 48109-1055

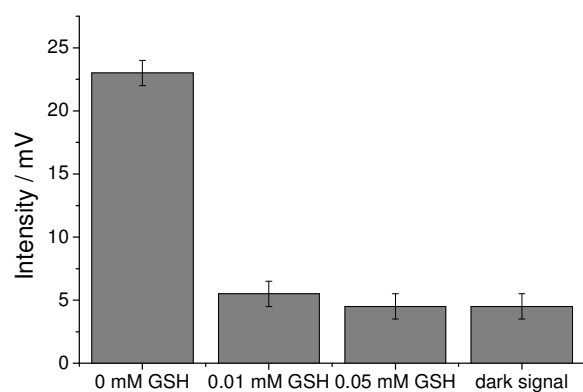


Figure S1. GSH concentration dependence of lucigenin-derived chemiluminescence of RSeDM in glycine-NaOH buffer (pH 10.0) solution containing 0.25 mM lucigenin.

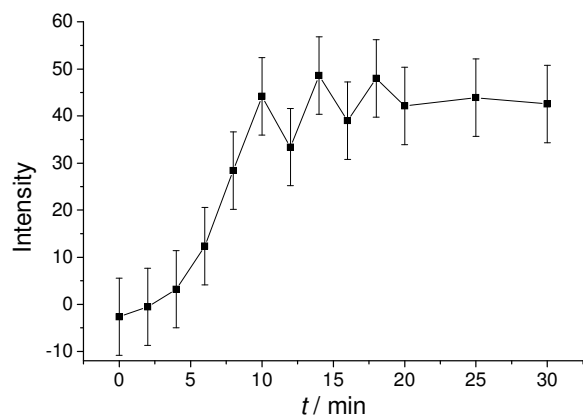


Figure S2. Time dependence of coelenterazine-derived chemiluminescence of RSeDM in phosphate buffer (pH 7.4) containing 100 μM EDTA, 4 mL/L Triton X-100 surfactant and 50 μM coelenterazine.