

**Table S1. VWD patient phenotypes**

The parameters defining the clinical and laboratory phenotypes of the patients studied in Fig 5 are shown. The symbols correspond to those in Fig. 5.

**Figure S1. VWF specific siRNA reduces VWF expression in HUVEC**

Confocal microscopy of control or siVWF-treated HUVEC stained for VWF (Top panels) and nuclei (Bottom panels) (representative images at 48 hour post siRNA) (Size bar = 20  $\mu$ m).

**Figure S2. VWF specific siRNA does not significantly alter protein expression of  $\alpha$ v or  $\beta$ 1 integrins in HUVEC**

Total (a)  $\alpha$ v or (b)  $\beta$ 1 integrin protein expression was measured by western blotting at 24 and 48 hour post siRNA treatment. (n=3) Open bars = siCTL, Closed bars = siVWF treated HUVEC.

Sample	Age	VWD type	Sex	VWF:RCo (IU/dL)	VWF:Ag (IU/dL)	Symbol
1	41	1	F	<10	13	●
2	61	1	F	10	13	★
3	58	1	M	<13	7	■
4	44	1	F	29	39	✱
5	49	2M	F	<10	26	△
6	27	2M	M	12	30	◇
7	30	2M	F	12	35	□
8	85	2A	M	<10	21	⊙
9	28	2A	M	20	35	▣

Table S1

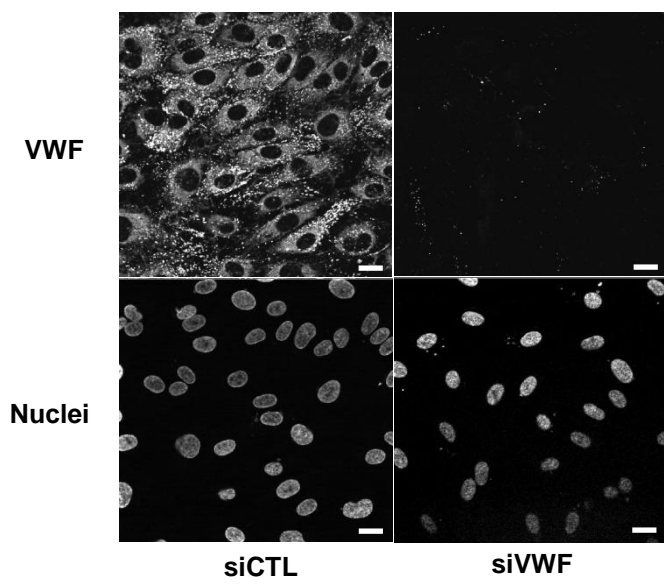


Figure S1

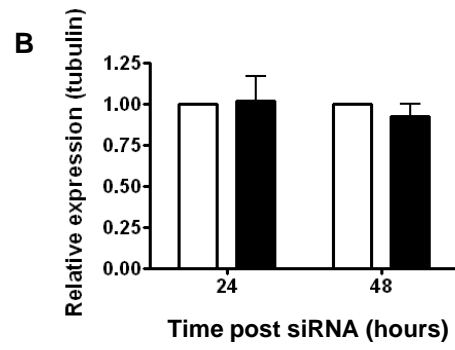
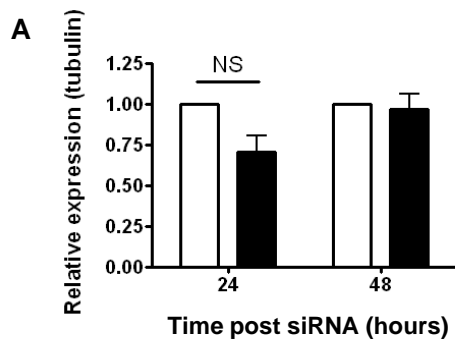


Figure S2