

Supplementary Figures

Supplementary Figure S1.

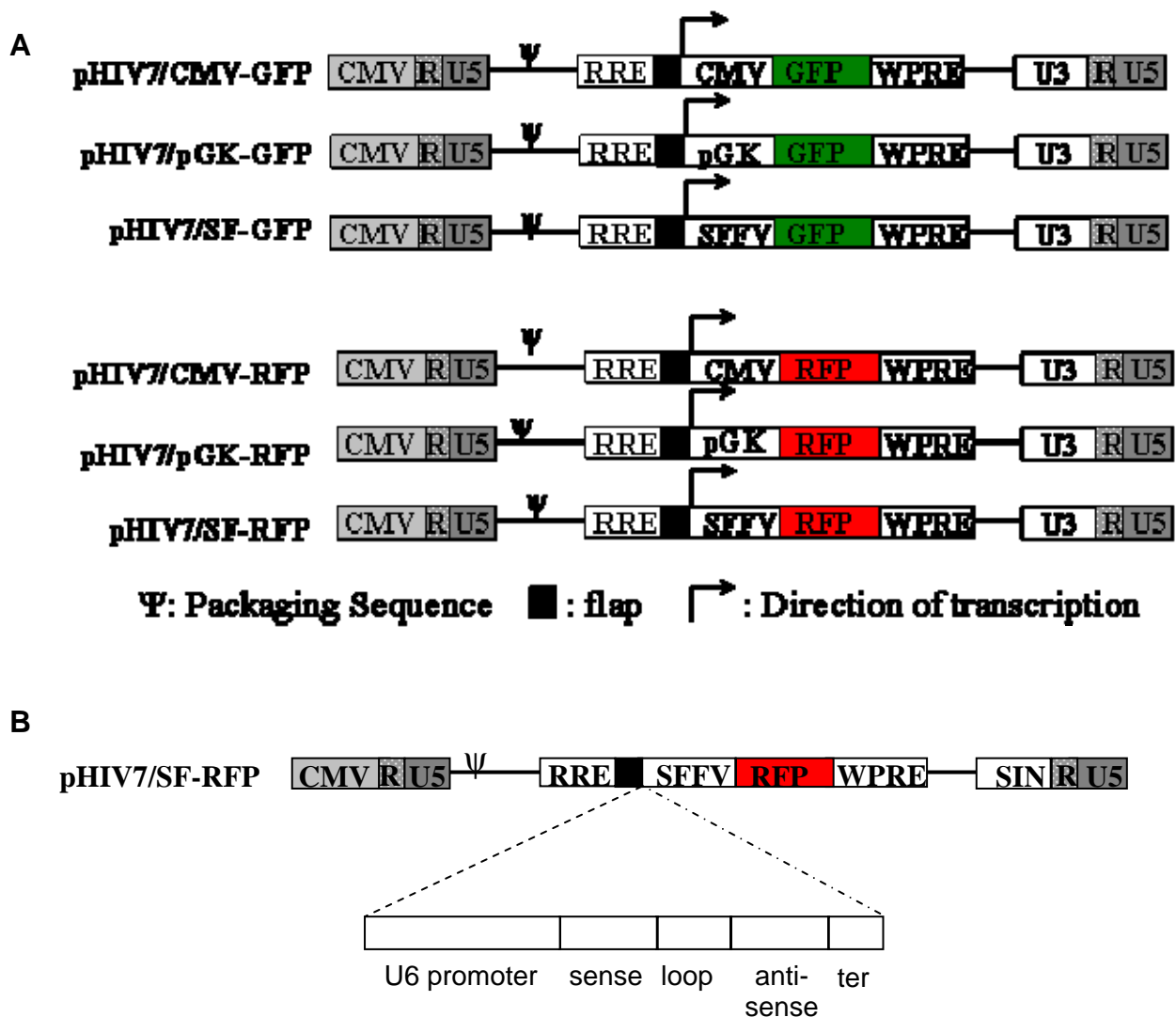


Figure S1 Lentivirus expression vectors used in this study. (A) Expression vectors. Expression cassettes for driven by CMV-GFP, PGK-GFP and SFFV-GFP were constructed and inserted into pHIV7 vectors. Similar cassettes were constructed for expression of RFP. Abbreviations: RRE= rev responsive element; WPRE= Woodchuck hepatitis virus posttranscriptional regulatory element; SIN= self-inactivating; R and U5=the repeat and U5 regions in the viral LTR. (B) shRNA constructs. Constructs for shRNA expression consisting of a U6 promoter and sense, loop, anti-sense and terminal sequences were inserted upstream of the GFP/RFP expression constructs in the HIV7 vector.

Supplementary Figure S2

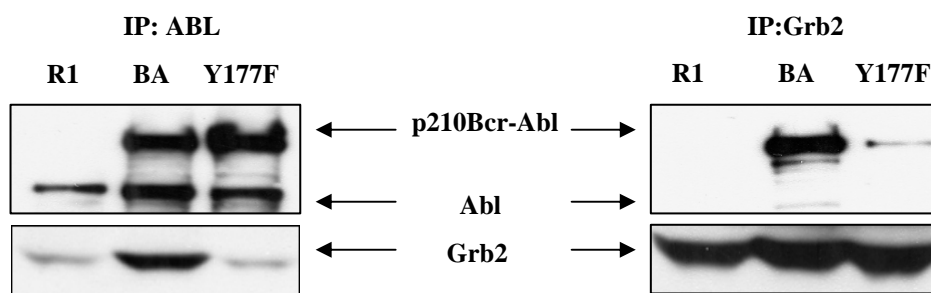


Figure S2 Grb2 associates with BCR-ABL-Y177 in human hematopoietic progenitor cells. BCR-ABL expressing CD34+ cells were cultured for seven days and immunoprecipitated with anti-Abl or anti-Grb2 antibodies as indicated. The positions of p^{210BCR-ABL} and Grb2 are indicated by arrow.