

1 **Figure legends for Supplemental data**

2

3 Supplemental figure 1. RSV infection does not affect cell viability of A549 or BEAS-2B cells. A549 cells
4 (A) and BEAS-2B cells (B) were either not inoculated (closed circles) or inoculated with rgRSV (MOI=3)
5 (open circles) for 1 h followed by incubation for a further 5 h in the presence of increasing concentrations
6 of dex. Cell viability was measured using the CellTiter-Glo Luminescent assay. No infection and no dex
7 was normalized to 100% cell viability. Means and SD are shown (n= 3).

8

9 Supplemental figure 2. RSV infection of A549 cells. A549 cells were inoculated with live rgRSV (A and
10 C) or UV-irradiated rgRSV (B and D) (MOI=3) for 1 h followed by further incubation for 24 h. Cells
11 were visualized under an inverted fluorescent microscope. A and B - fluorescent images; C and D - phase
12 contrast images.

13

14 Supplemental figure 3. RSV induction of IL-6 and IL-8 can be reduced by inhibitors of NFκB. A549 cells
15 were pre-treated for 1 h with 50 μM PDTC (hatched bar) or 10 μM BAY 11-7082 (stripped bar) and then
16 either mock inoculated with HeLa-conditioned media (black bar) or inoculated with rgRSV (white,
17 hatched and stripped bars) (MOI=3) for 1 h followed by incubation for a further 5 h (A and B) or
18 incubation for a further 24 hours in the presence of PDTC and BAY 11-7082 (C and D). RSV induction
19 of IL-6 (A) and IL-8 (B) mRNA was determined by real-time PCR and normalized to GAPDH and CAP-
20 1. RSV induction of IL-6 (C) and IL-8 (D) protein was measured by ELISA. Means and SD are shown
21 (n= 4).

22

23 Supplemental figure 4. RSV infection does not alter GR protein levels. A549 cells were either not
24 inoculated (black bar) or inoculated with HeLa-conditioned media (mock infected) (white bar) or rgRSV
25 (MOI=3) (hatched bar) for 1 h followed by incubation with growth media for 5 h. Western blotting of 10

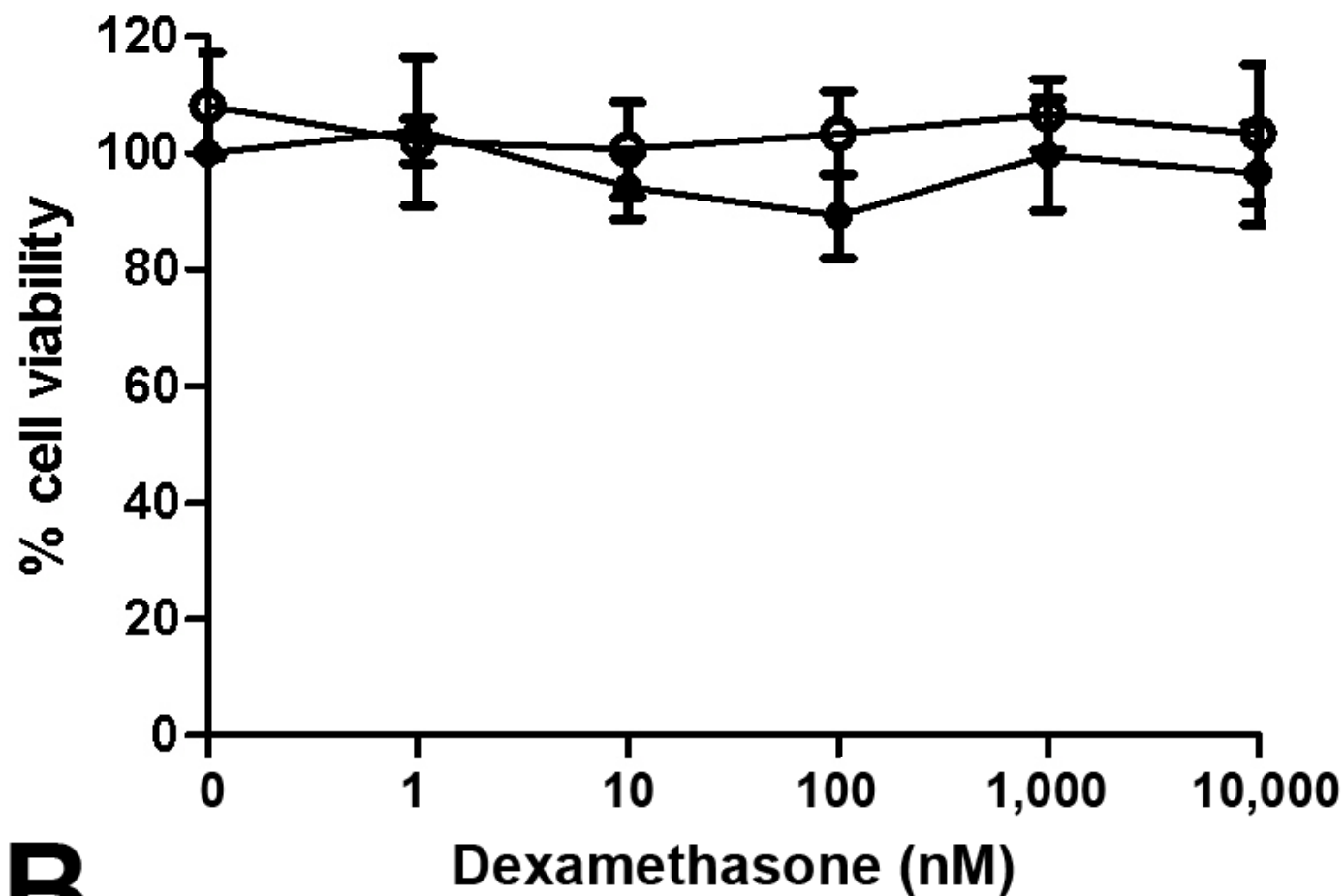
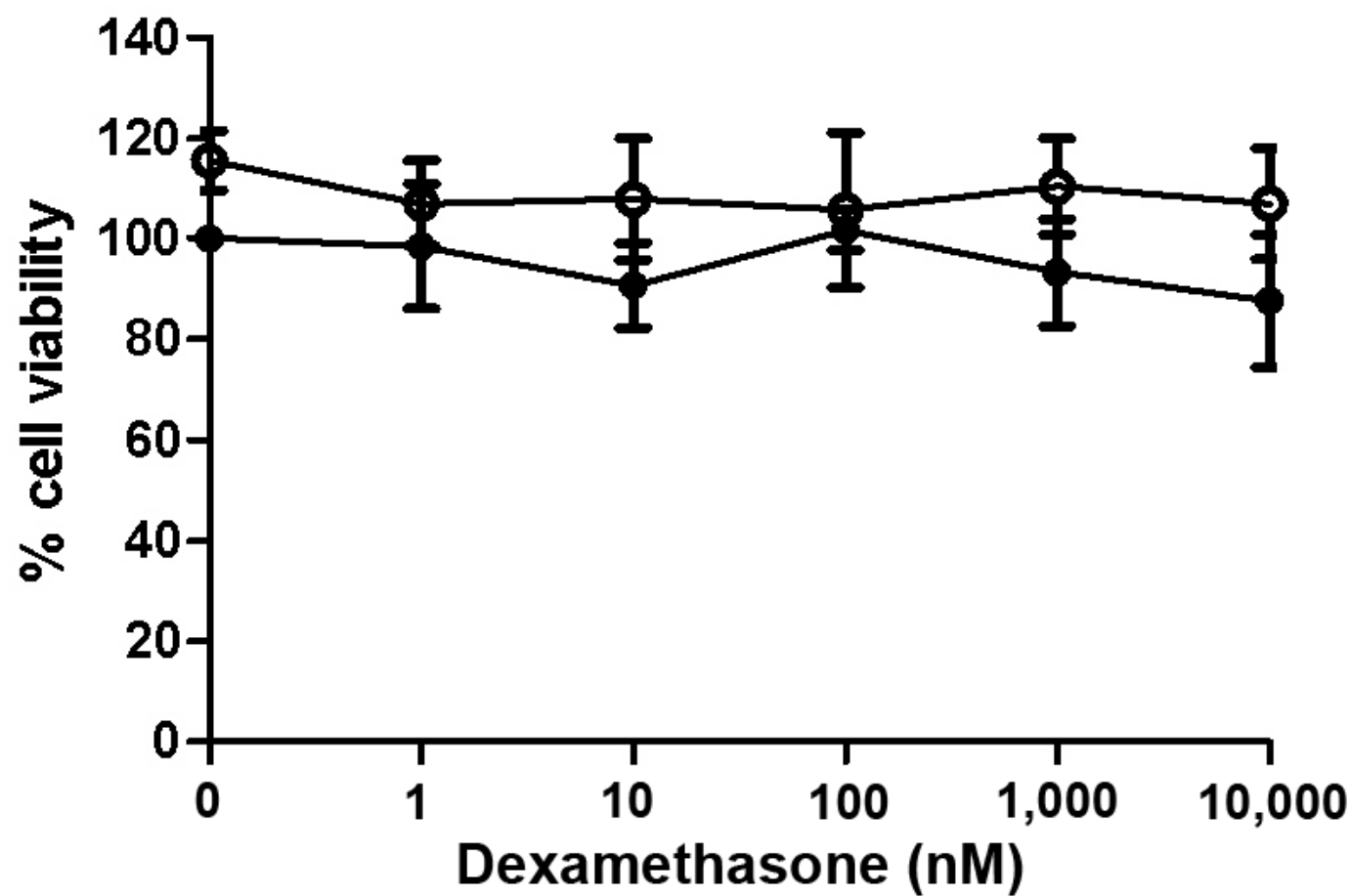
1 μ g total protein was performed for GR and stripped and re-probed for β -actin. A representative western
2 blot is shown (A) and quantification using the Kodak Image Station 4000MM Pro (B). Means and SD are
3 shown (n= 4).

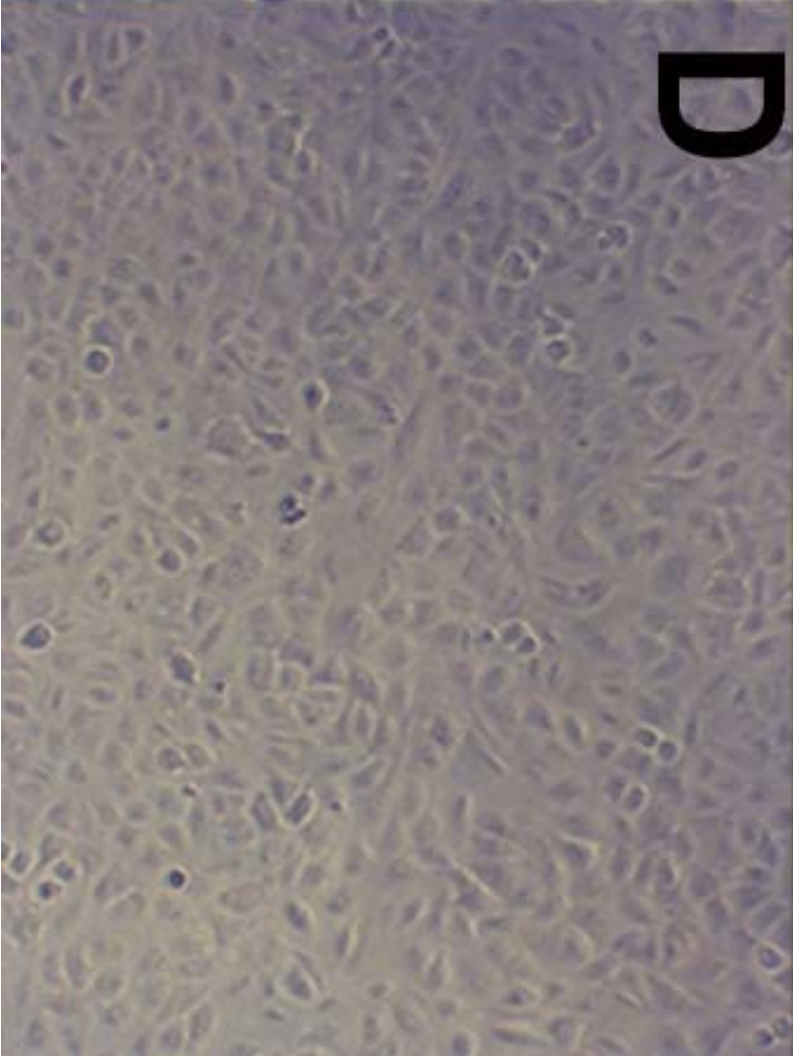
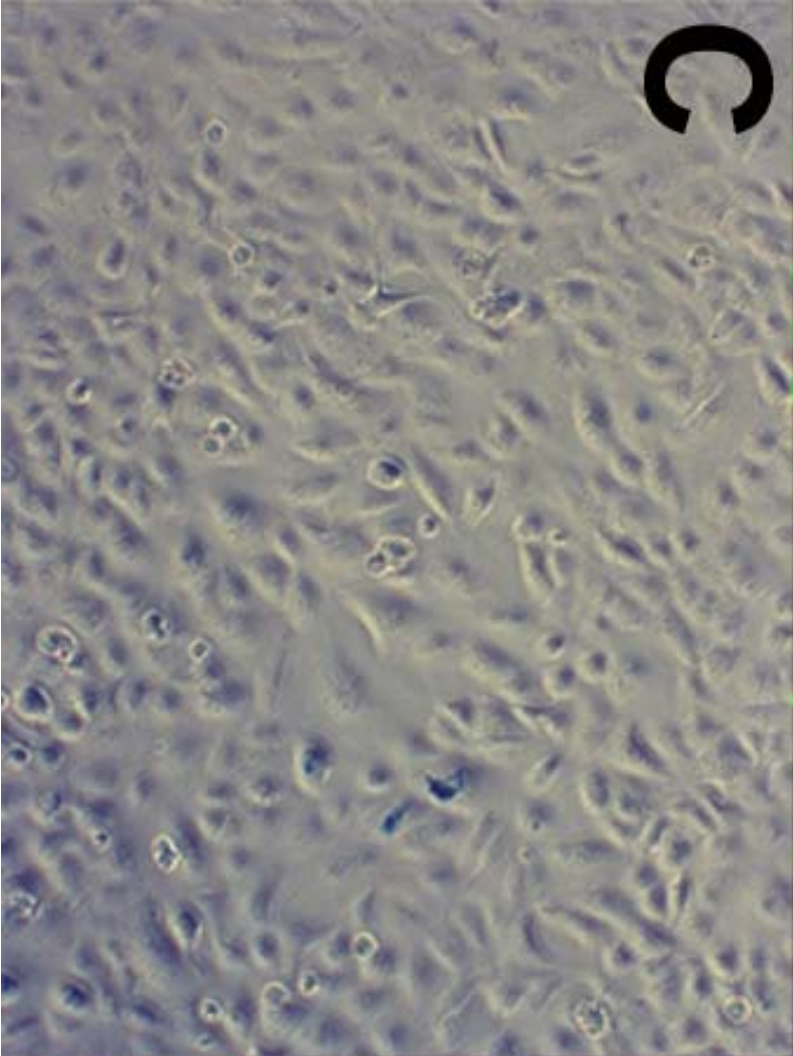
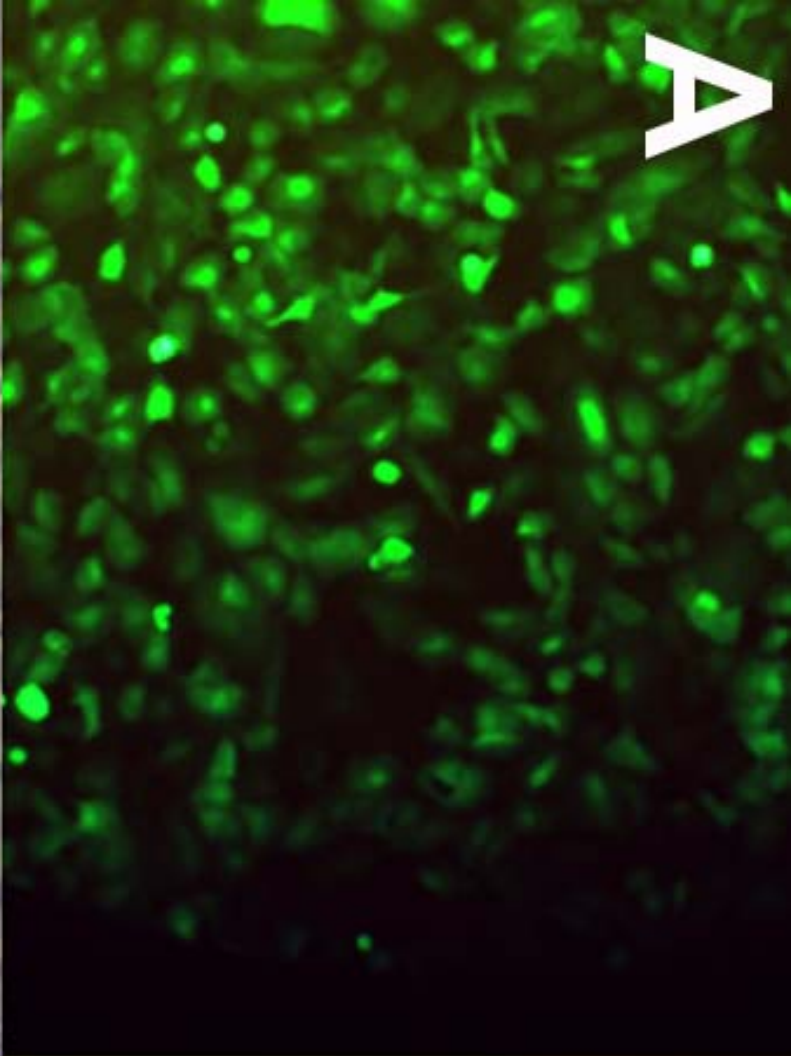
4

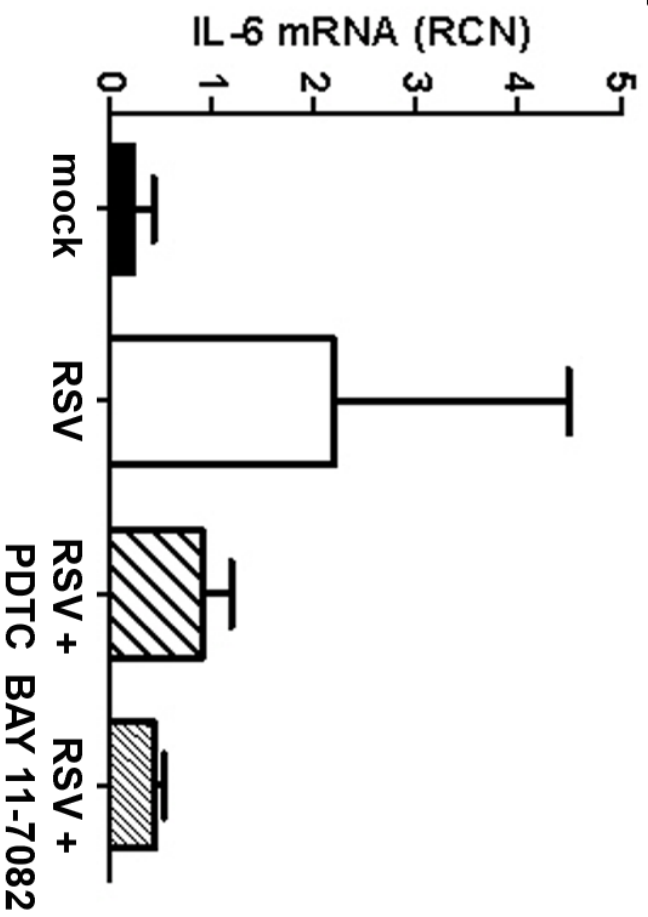
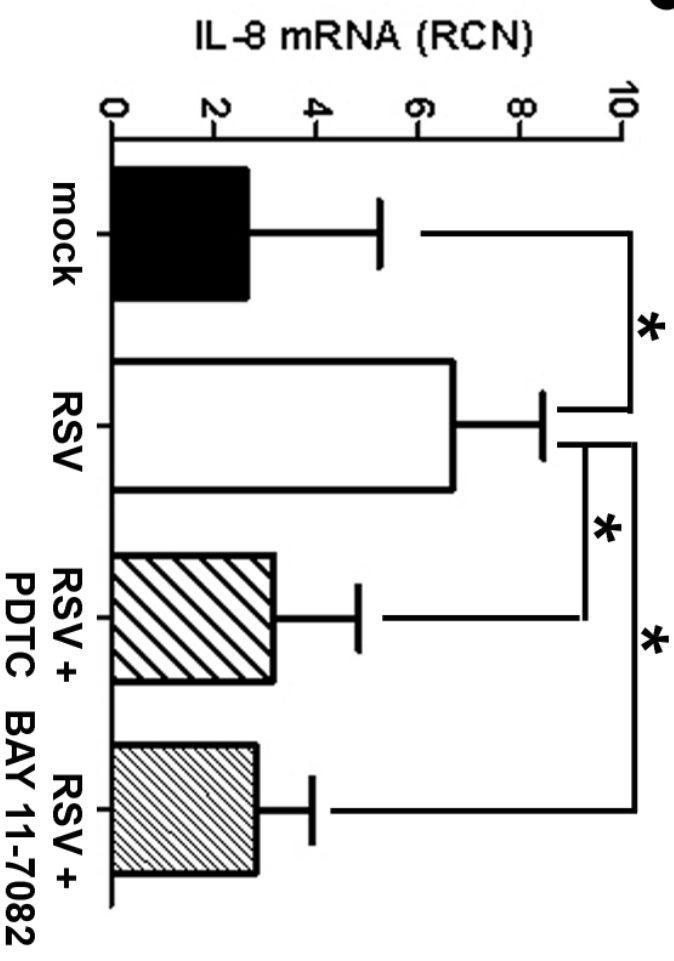
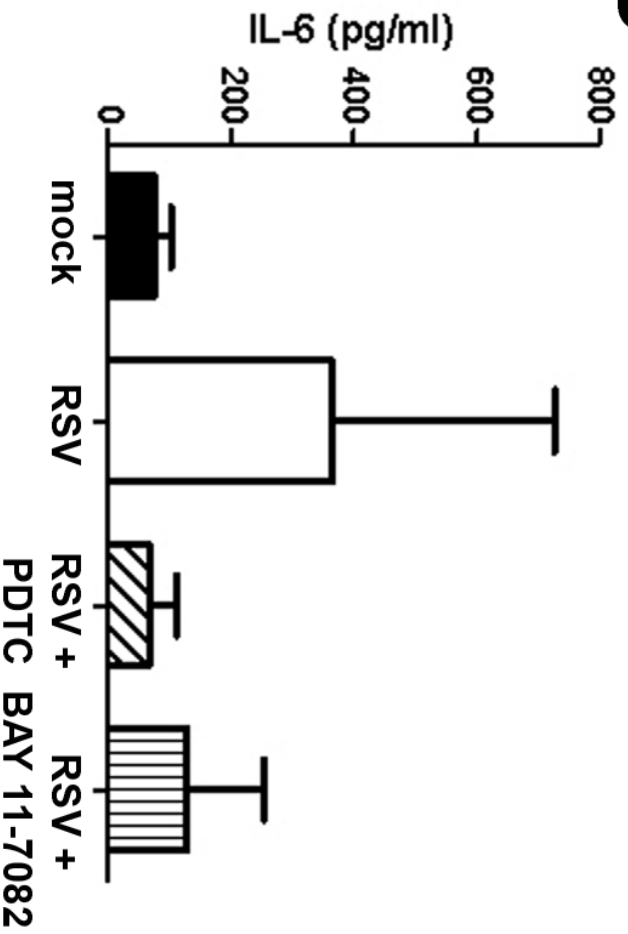
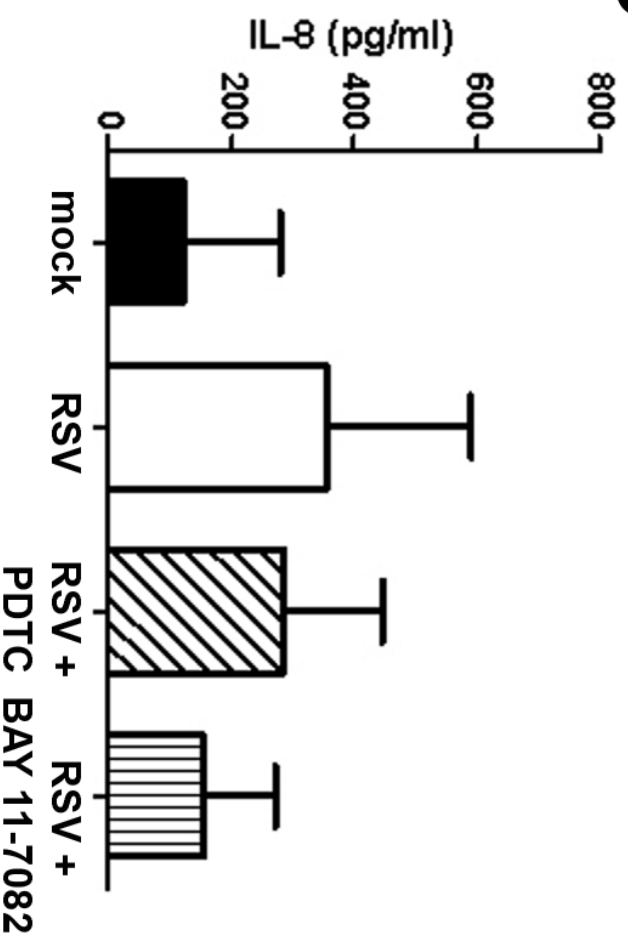
5 Supplemental figure 5. RSV infection does not alter GR nuclear translocation. A549 cells were either not
6 inoculated or inoculated with rgRSV (MOI=3) for 1 h followed by incubation with 100 nM
7 dexamethasone for 5 h. (A) Nuclear and cytosolic extracts were subjected to SDS-PAGE and western
8 blotting for GR and RSV proteins. (B) Cells were fixed and permeabilized and the cellular distribution of
9 GR determined by immunocytochemistry.

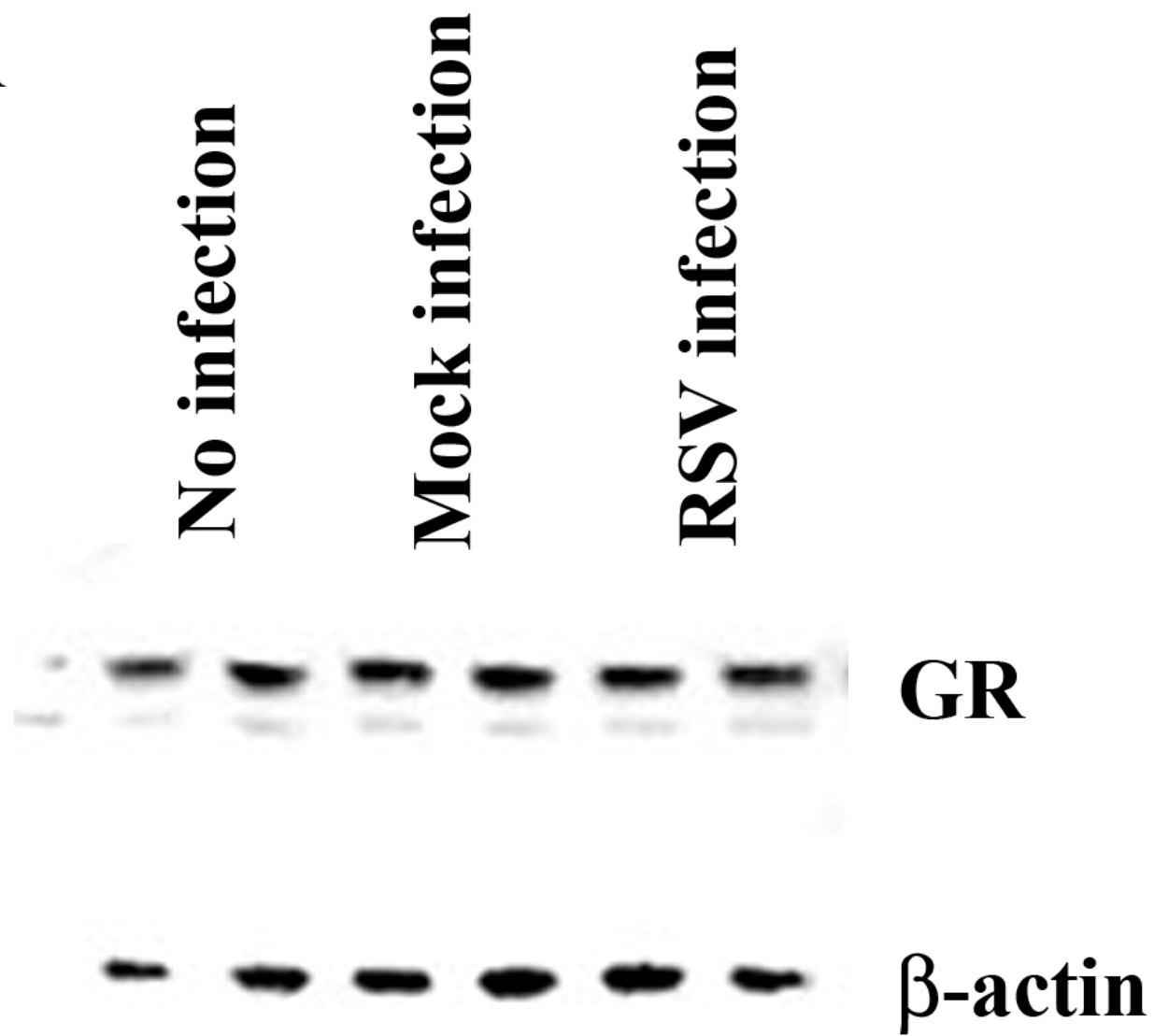
10

11 Supplemental figure 6. Dissociation curves of real-time PCR using an input sample from the ChIP and the
12 ChIP primers for GILZ (A), FKBP51 (B) and MKP-1 (C).

A**B**



A**B****C****D**

A**B**

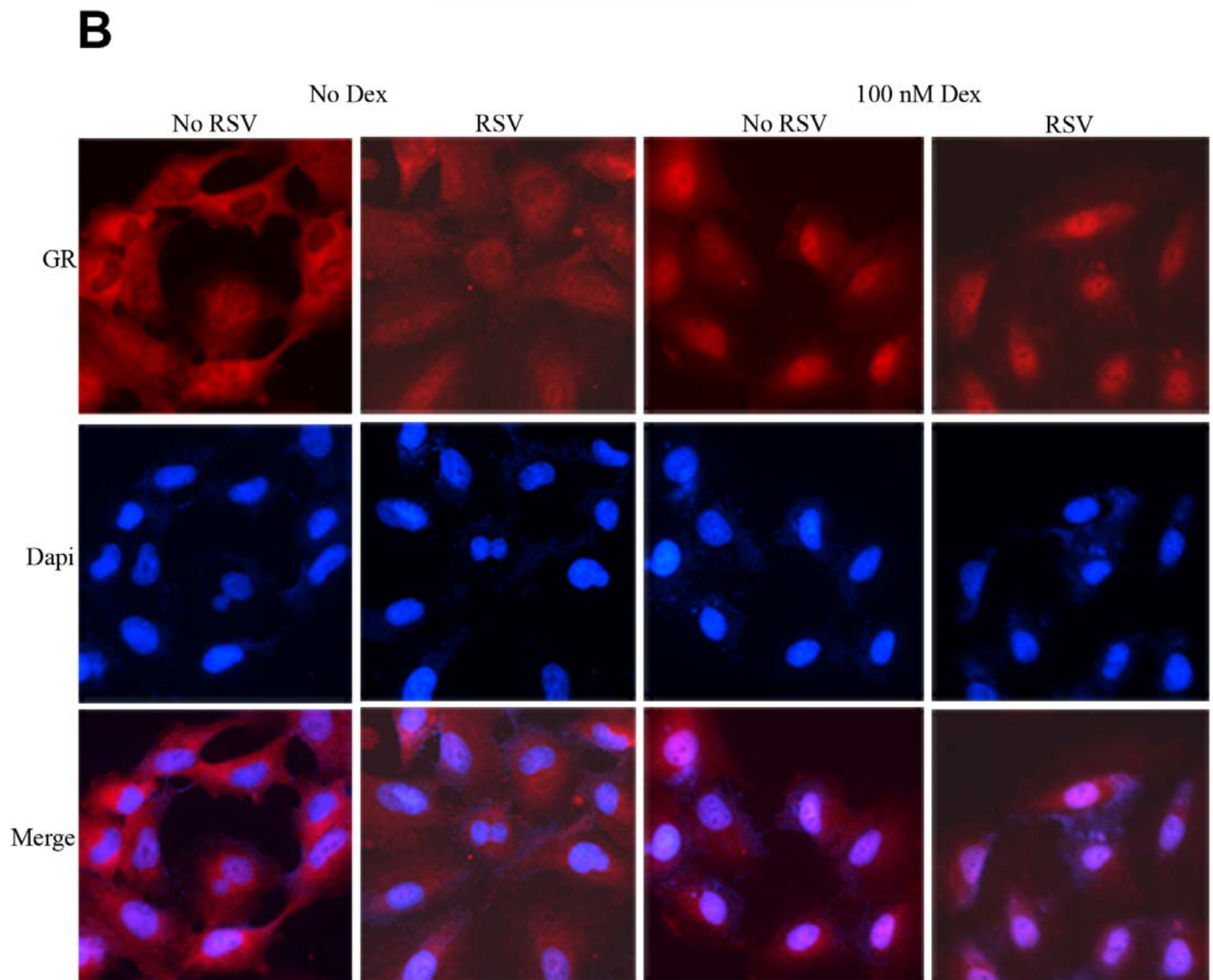
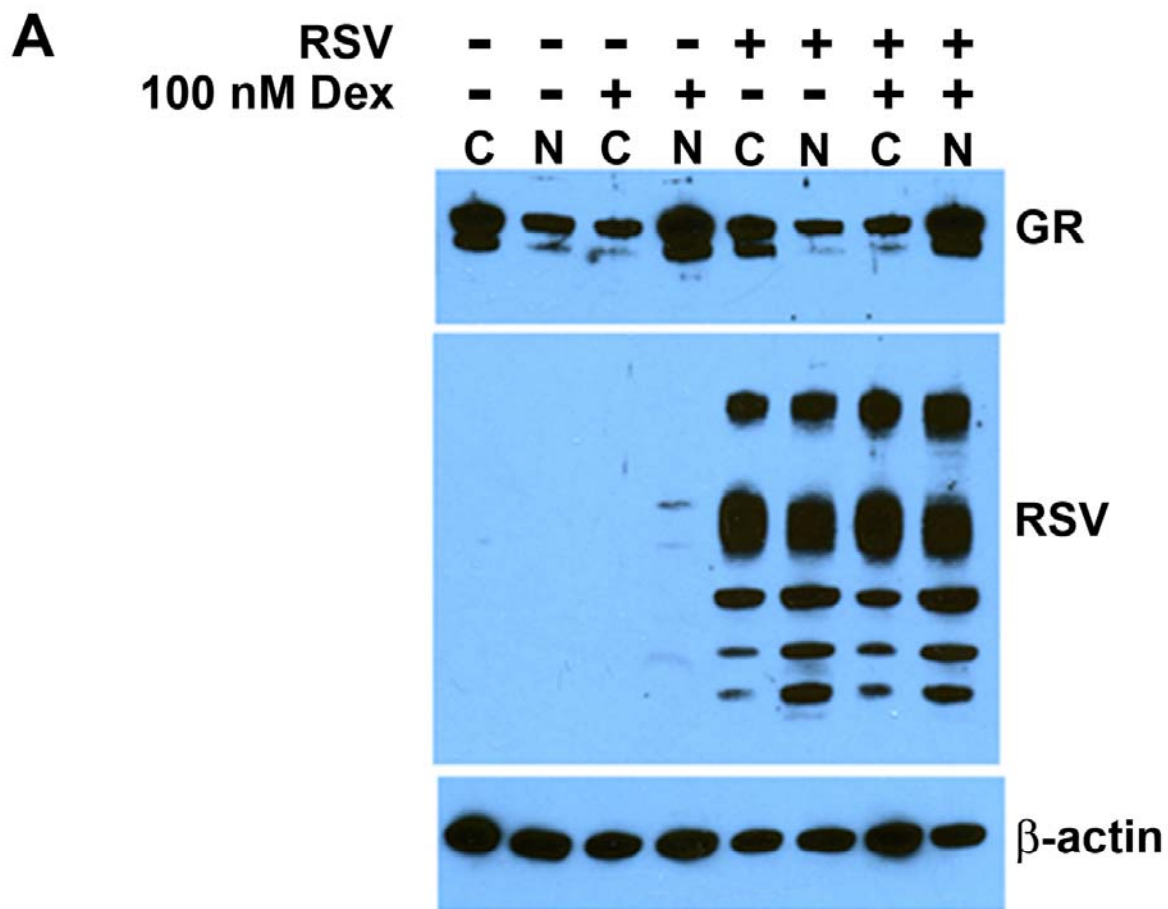


TABLE 1. Real-time PCR primers.

Gene name	Accession number	Direction	Primer sequence (5'-3')	Reference
CAP-1	NM_006367.3	F	ATCCCTGGATTGTGAAATAGTC	(26)
		R	ATTAAAGTCACCGCCTTCTGTAG	
FKBP51	NM_004117	F	TCCCTCGAATGCAACTCTCT	
		R	AAACATCCTTCCACCACAGC	
GAPDH	NM_002046.3	F	ACTTTGGTATCGTGGAAGGACT	(26)
		R	GTAGAGGCAGGGATGATGTTCT	
GILZ	NM_004089	F	GCACAATTTCTCCATCTCCTTCTT	(69)
		R	TCAGCATGATTCTTCACCAGATCCA	
IL-6	NM_000600.2	F	CACAGACAGCCACTCACCTC	
		R	TTTTCTGCCAGTGCCTCTTT	
IL-8	NM_000584.2	F	AGTTTTTGAAGAGGGCTGAGAAT	
		R	CAACAGACCCACACAATACATGA	
MKP-1	NM_004417	F	CTGCCTTGATCAACGTCTCA	
		R	ACCCTTCCTCCAGCATTCTT	