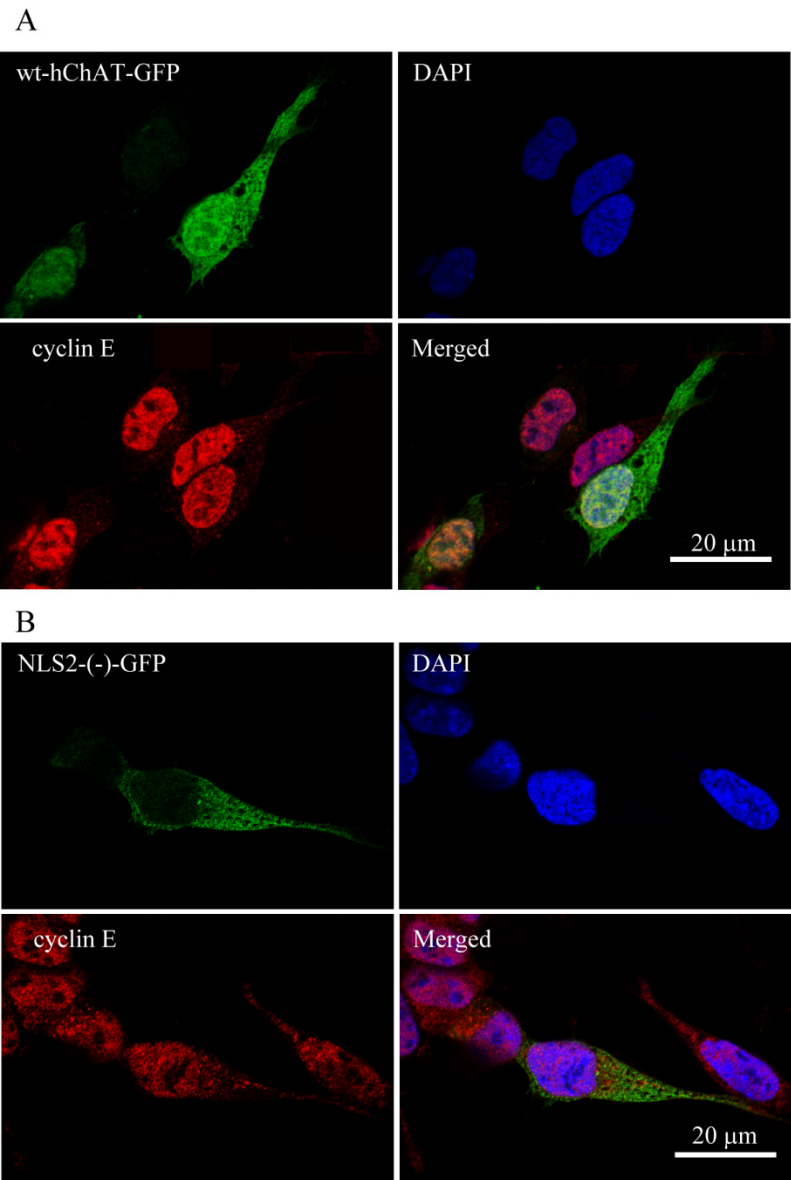


**Figure S1**



**FIGURE LEGENDS**

Fig. S1 Immunocytochemistry of cyclin E of wt-hChAT-GFP cells (A) and NLS2(-)-hChAT-GFP cells (B). Fixed cells were stained with anti-cyclin E antibody conjugated with rhodamine (red color) and 4',6-diamidino-2-phenylindole (DAPI ; blue color). In our culture condition, since most of the cells showed nuclear cyclin-E positive staining, they were in G1/S phase. Bars indicate 20 μm.