

B

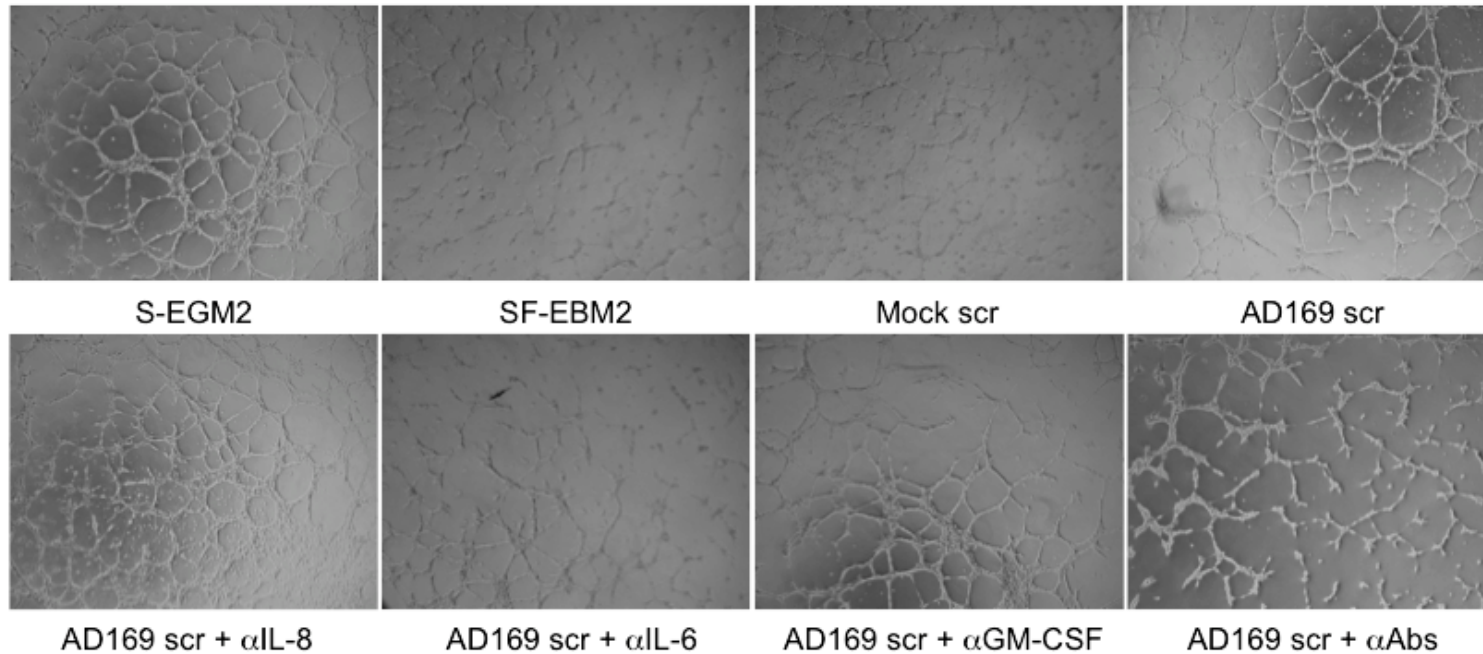


Figure S1. Neutralization of IL-6 decreases angiogenesis. (A) Quantification of matrigel tubule formation after 24 h in the presence of mock secretome (Mock scr), mock secretome with a non-related antibody (Mock scr + nrAb), mock secretome with anti-IL-6, anti-GM-CSF, and anti-IL-8/CXCL8 (Mock scr + α Abs), HCMV AD169 secretome (AD169 scr), HCMV AD169 secretome with a non-related antibody (AD169 scr + nrAb), HCMV AD169 secretome with anti-IL-6 antibody (AD169 scr + α IL-6), HCMV AD169 secretome with anti-GM-CSF antibody (AD169 scr + α GM-CSF), HCMV AD169 secretome with anti-IL-8/CXCL8 antibody (AD169 scr + α IL-8) and HCMV AD169 secretome with anti-IL-6, anti-GM-CSF, and IL-8/CXCL8 antibodies (AD169 scr + α Abs). The results are expressed as mean \pm SD, ### $P < 0.001$ vs mock, *** $P < 0.001$, ** $P < 0.01$ vs HCMV AD169 secretome. (B) Representative examples of each culture conditions are shown as a low-power image (magnification, X10).

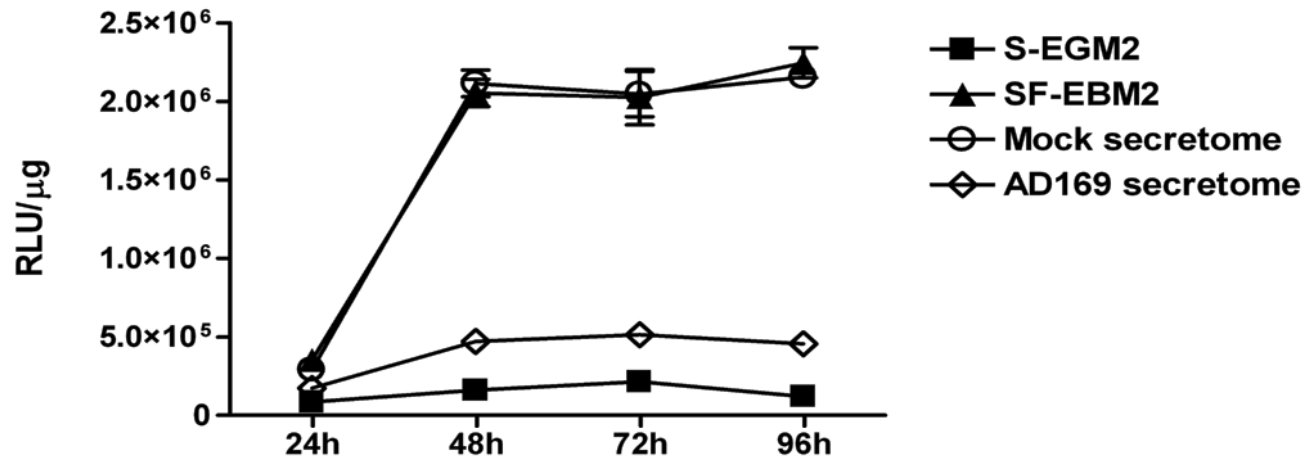
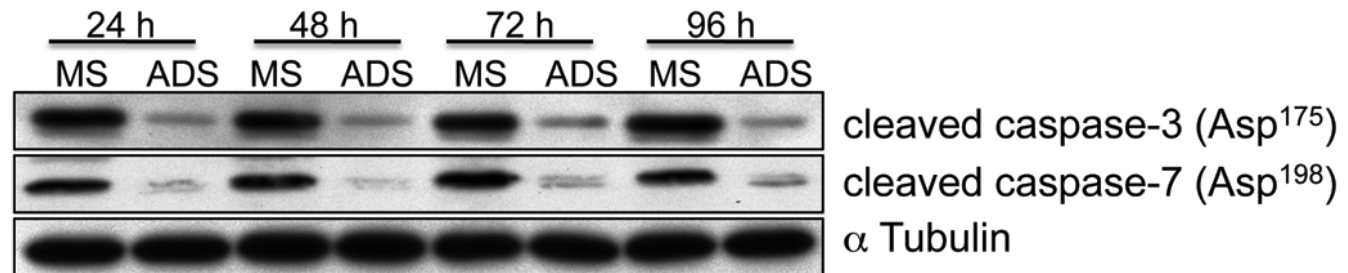
A**B**

Figure S2. HCMV secretomes decrease caspase 3 and 7 activity. HUVEC cells were starved over-night and then stimulated with mock- or AD169- secretome during a time course analysis. (A) Caspase 3/7 activity measured using a Caspase-Glo assay kit (Promega). (B) Immunoblotting for cleaved caspase-3 and 7.