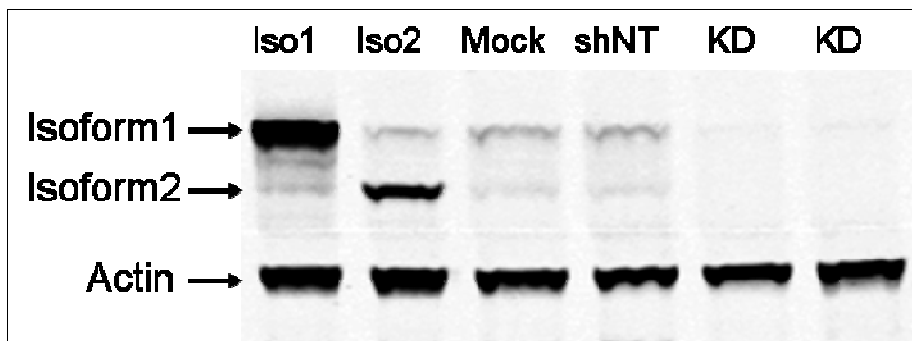


## **Figure S1**

**Validation of the specificity of the FBXO7 antibody by Western blotting in stable *FBXO7* gene knock down HEK 293T cells**

The FBXO7 protein is visualized by using a mouse anti-FBXO7 antibody (Abnova). Cells overexpressing the FBXO7 isoform 1 or isoform 2 are also shown as a reference. Actin is immunostained as loading control.



**Iso1: cells transfected with FBXO7 isoform 1 expression construct**

**Iso2: cells transfected with FBXO7 isoform 2 expression construct**

**Mock: untransfected cells (endogenous FBXO7 proteins)**

**shNT: non-targeting shRNA**

**KD: *FBXO7* knock down shRNA**