

Table S1

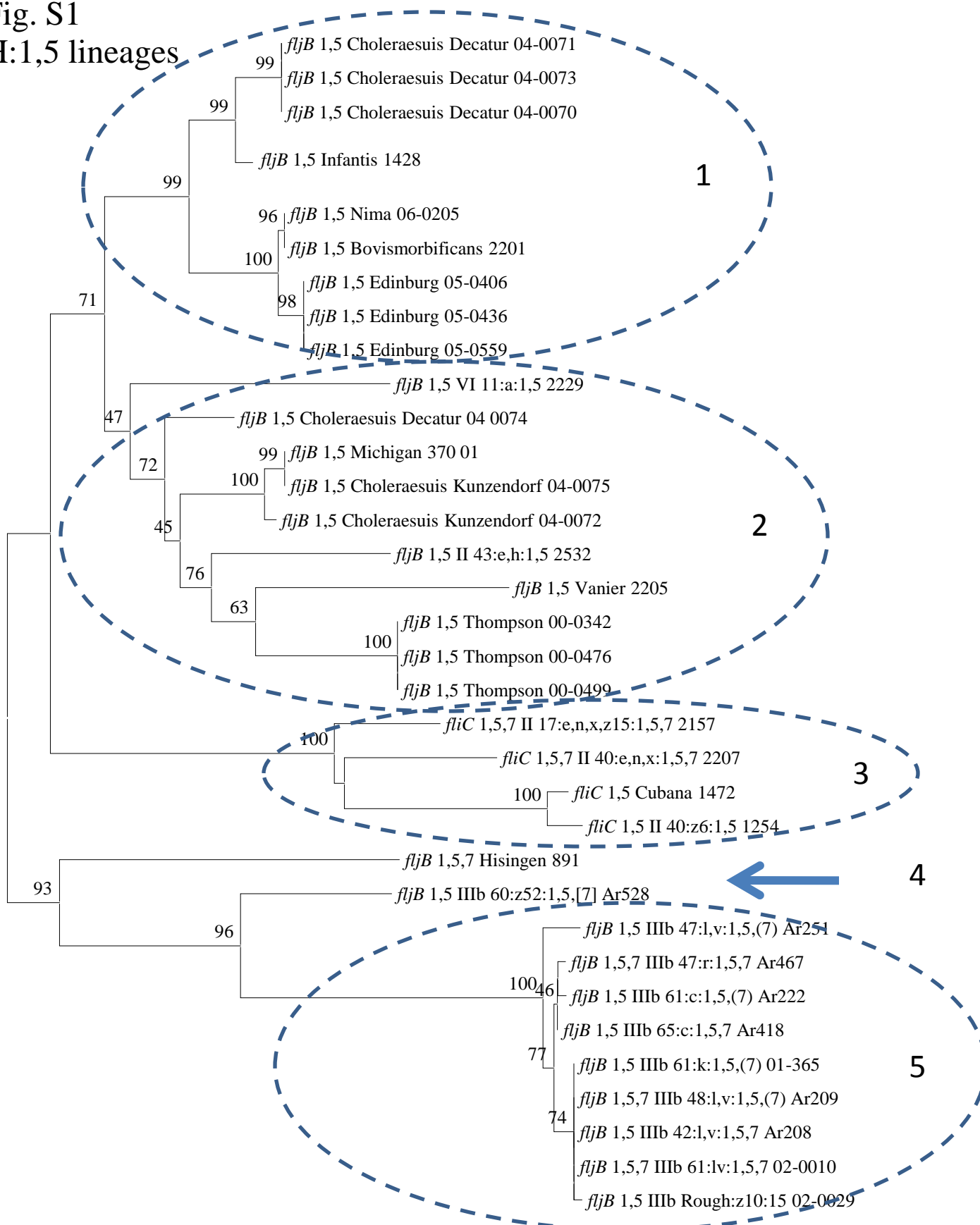
“Top 100” serotypes of *Salmonella* (2002-2006)

Rank	Serotype	Subsp.	O Group	O Antigen	H1	H2
1	Typhimurium	I	B	4,[5],12	i	1,2
2	Enteritidis	I	D1	9,12	g,m	-
3	Newport	I	C2	6,8,[20]	e,h	1,2
4	Heidelberg	I	B	4,[5],12	r	1,2
5	Javiana	I	D1	9,12	l,z28	1,5
6	Montevideo	I	C1	6,7,[14]	g,m,s	-
7	Muenchen	I	C2	6,8	d	1,2
8	I 4,[5],12:i:-	I	B	4,[5],12	i	-
9	Saintpaul	I	B	4,[5],12	e,h	1,2
10	Oranienburg	I	C1	6,7,[14]	m,t	-
11	Braenderup	I	C1	6,7,[14]	e,h	e,n,z15
12	Infantis	I	C1	6,7,[14]	r	1,5
13	Mississippi	I	G	13,23	b	1,5
14	Thompson	I	C1	6,7,[14]	k	1,5
15	Agona	I	B	4,[5],12	f,g,s	-
16	Paratyphi B var. L(+) tartrate+	I	B	4,[5],12	b	1,2
17	Typhi	I	D1	9,12,[Vi]	d	-
18	Berta	I	D1	9,12	f,g,t	-
19	Hadar	I	C2	6,8	z10	e,n,x
20	Stanley	I	B	4,[5],12,[27]	d	1,2
21	Poona	I	G	13,22	z	1,6
22	Bareilly	I	C1	6,7,[14]	y	1,5
23	Anatum	I	E1	]	e,h	1,6
24	Hartford	I	C1	6,7	y	e,n,x
25	Mbandaka	I	C1	6,7,[14]	z10	e,n,z15
26	Panama	I	D1	9,12	l,v	1,5
27	Paratyphi B	I	B	4,[5],12	b	1,2
28	Litchfield	I	C2	6,8	l,v	1,2
29	Sandiego	I	B	4,[5],12	e,h	e,n,z15
30	Schwarzengrund	I	B	4,12,[27]	d	1,7
31	Derby	I	B	4,[5],12	f,g	-
32	Paratyphi A	I	A	2,12	a	-
33	Tennessee	I	C1	6,7,[14]	z29	-
34	Brandenburg	I	B	4,[5],12	l,v	e,n,z15
35	Senftenberg	I	E4	1,3,19	g,s,t	-
36	Norwich	I	C1	6,7	e,h	1,6
37	Rubislaw	I	F	11	r	e,n,x
38	Give	I	E1	]	l,v	1,7
39	Miami	I	D1	9,12	a	1,5
40	Gaminara	I	I	16	d	1,7
41	Weltevreden	I	E1	3,10[15]	r	z6
42	Bovismorbificans	I	C2	6,8,[20]	r	1,5
43	Kentucky	I	C2	8,[20]	i	z6
44	Virchow	I	C1	6,7,[14]	r	1,2
45	Muenster	I	E1	]	e,h	1,5
46	Dublin	I	D1	1,9,12,[Vi]	g,p	-
47	Manhattan	I	C2	6,8	d	1,5
48	Pomona	I	M	28	y	1,7
49	Reading	I	B	4,[5],12	e,h	1,5
50	Adelaide	I	O	35	f,g	-

Table S1 con't

Rank	Serotype	Subsp.	O Group	O Antigen	H1	H2
51	Ohio	I	C1	6,7,[14]	b	l,w
52	Blockley	I	C2	6,8	k	1,5
53	Kiambu	I	B	4,12	z	1,5
54	Uganda	I	E1	3,10[15]	l,z13	1,5
55	Urbana	I	N	30	b	e,n,x
56	I 4,[5],12:b:-	I	B	4,[5],12	b	-
57	Minnesota	I	L	21	b	e,n,x
58	Inverness	I	P	38	k	1,6
59	Hvittingfoss	I	I	16	b	e,n,x
60	Bardo	I	C2	8	e,h	1,2
61	Bredeney	I	B	4,12,[27]	l,v	1,7
62	London	I	E1	3,10[15]	l,v	1,6
63	Telekebir	I	G	13,23	d	e,n,z15
64	Havana	I	G	13,23	f,g,s	-
65	Johannesburg	I	R	40	b	e,n,x
66	Cerro	I	K	[6],[14],18	z4,z23	-
67	Albany	I	C2	8,[20]	z4,z24	-
68	Chester	I	B	4,[5],12	e,h	e,n,x
69	Worthington	I	G	13,23	z	l,w
70	Indiana	I	B	4,12	z	1,7
71	Istanbul	I	C2	8	z10	e,n,x
72	Oslo	I	C1	6,7,[14]	a	e,n,x
73	Agbeni	I	G	13,23	g,m,[s],[t]	-
74	Grumpensis	I	G	13,23	d	1,7
75	IV 48:g,z51:-	IV	Y	48	g,z51	-
76	Alachua	I	O	35	z4,z23	-
77	Cubana	I	G	13,23	z29	-
78	Haardt	I	C2	8	k	1,5
79	Eastbourne	I	D1	9,12	e,h	1,5
80	Lomalinda	I	D1	9,12	a	e,n,x
81	IV 50:z4,z23:-	IV	Z	50	z4,z23	-
82	Edinburg	I	C1	6,7,[14]	b	1,5
83	Baildon	I	D2	9,46	a	e,n,x
84	Ealing	I	O	35	g,m,s	-
85	IV 50:g,z51:-	IV	Z	50	g,z51	-
86	Monschau	I	O	35	m,t	-
87	IV 44:z4,z23:-	IV	V	44	z4,z23	-
88	Choleraesuis	I	C1	6,7	c	1,5
89	Meleagridis	I	E1	]	e,h	l,w
90	Kottbus	I	C2	6,8	e,h	1,5
91	Kintambo	I	G	13,23	m,t	-
92	Corvallis	I	C2	8,[20]	z4,z23	-
93	I 9,12:l,z28:-	I	D1	9,12	l,z28	-
94	Ibadan	I	G	13,22	b	1,5
95	Rissen	I	C1	6,7,[14]	f,g	-
96	IIIa 18:z4,z23:-	IIIa	K	18	z4,z23	-
97	Nima	I	M	28	y	1,5
98	Irumu	I	C1	6,7	l,v	1,5
99	Pensacola	I	D1	9,12	m,t	-
100	Choleraesuis var. Kunzendorf	I	C1	6,7	c	1,5

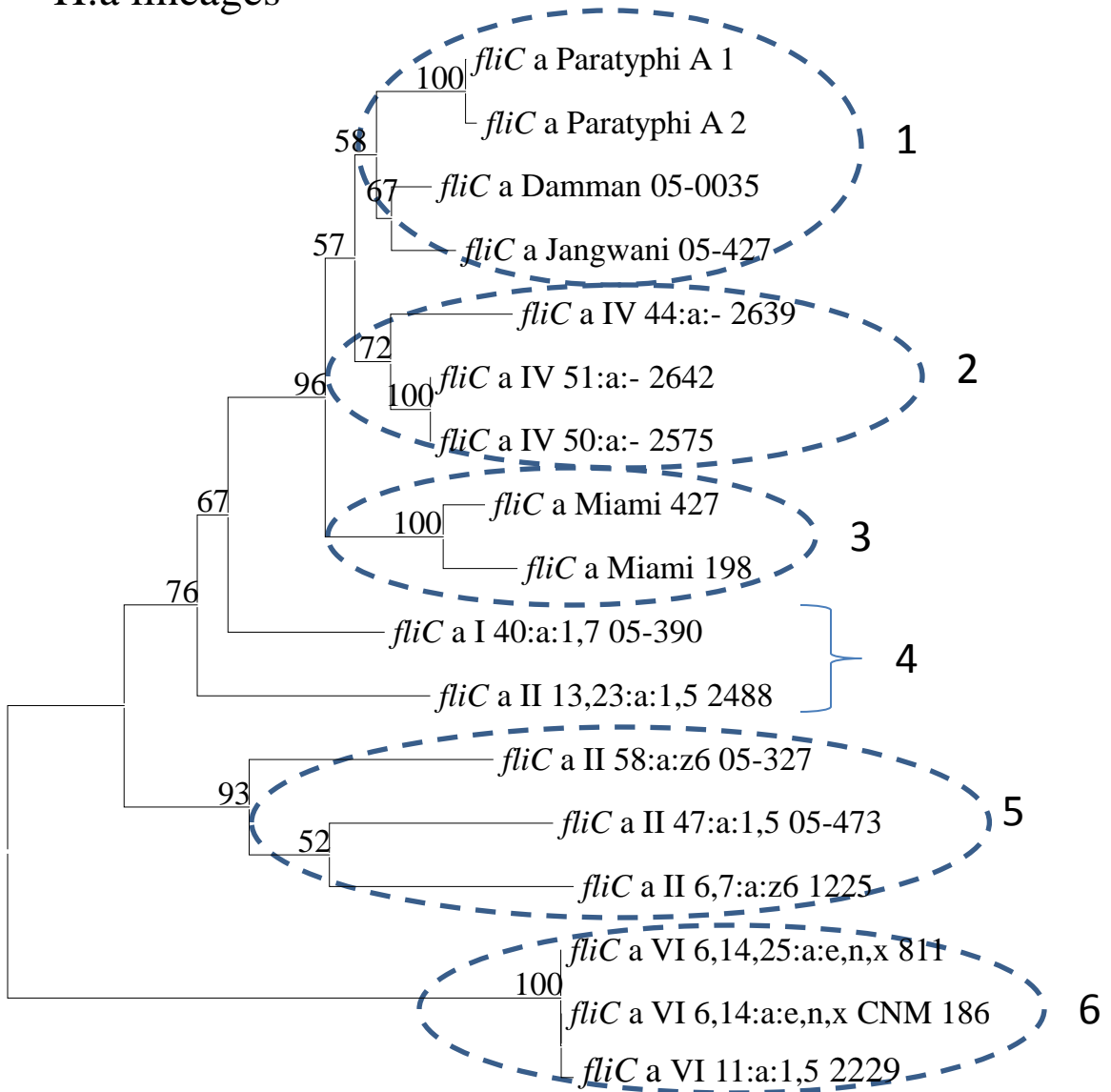
Fig. S1  
H:1,5 lineages



0.005

Fig. S2

H:a lineages



0.005

Fig. S3

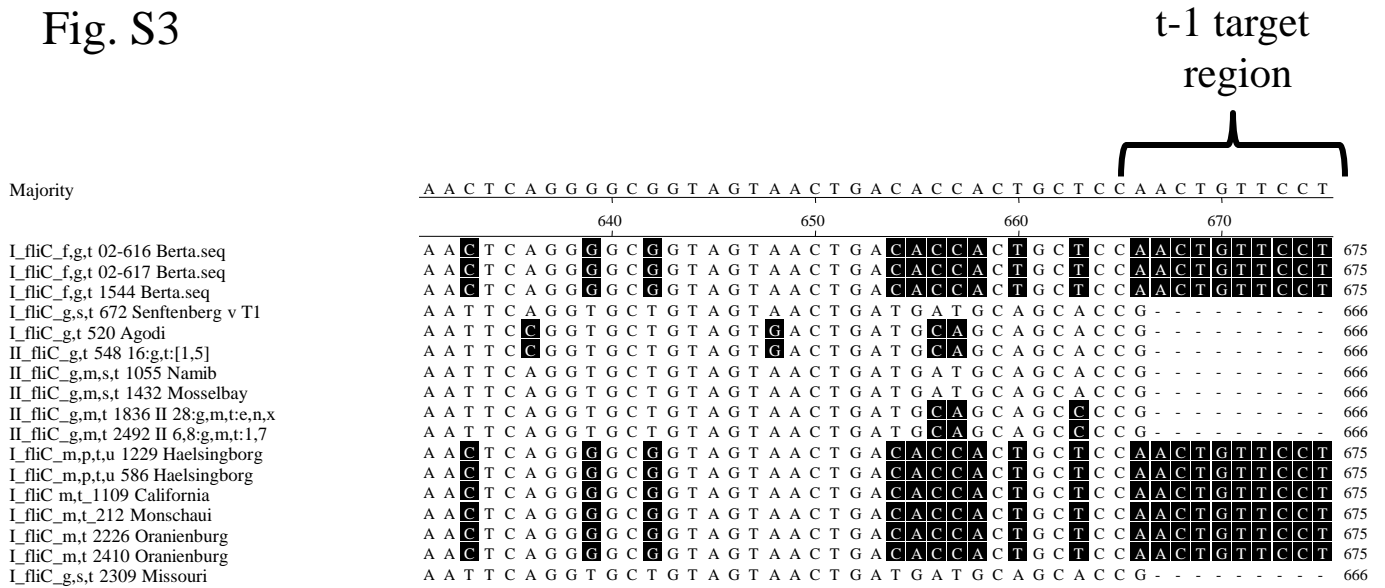


Fig. S4

