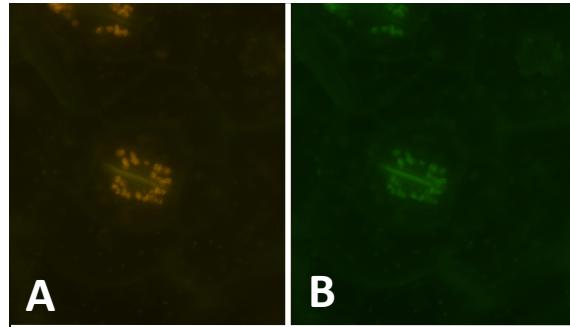


SUPPLEMENTAL FIGURE 1. Recombinant Arabidopsis proteins used for analysis.

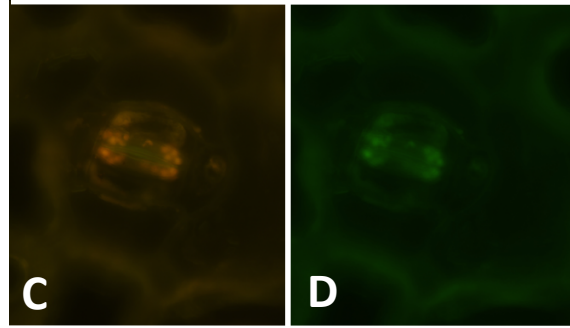
(A) AtAOR (At1g23740) was expressed as GST-AtAOR fusion protein in BL21 cells, and purified by GSH-Sepharose column. Proteins were stained with Coomassie Brilliant Blue R-250.

(B) Purified recombinant AtADRs and AtAKR proteins used for enzymological analyses.

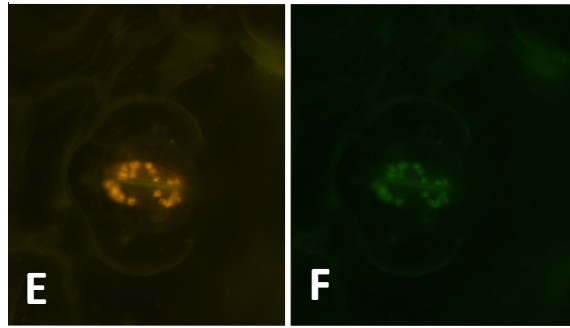
AtChIADR
(At1g54870)



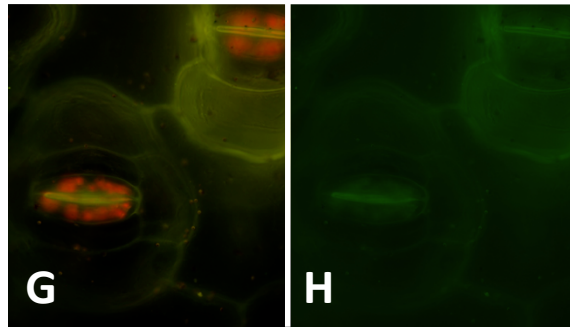
AtChIADR
(At3g04000)



AtChIAKR
(At2g37770)



AtCytADR
(At3g61220)



SUPPLEMENTAL FIGURE 2.
Intracellular localization of ADR-GFPs and AKR-GFP fusion in spiderwort cells. Images show single microscope sections with fluorescence microscope. Left images (A, C, E, G) show the merged signal (yellow to orange) of GFP signals and chlorophyll autofluorescence (red) in the guard cell, and right images (B, D, F, H) show GFP fluorescence of the same cells