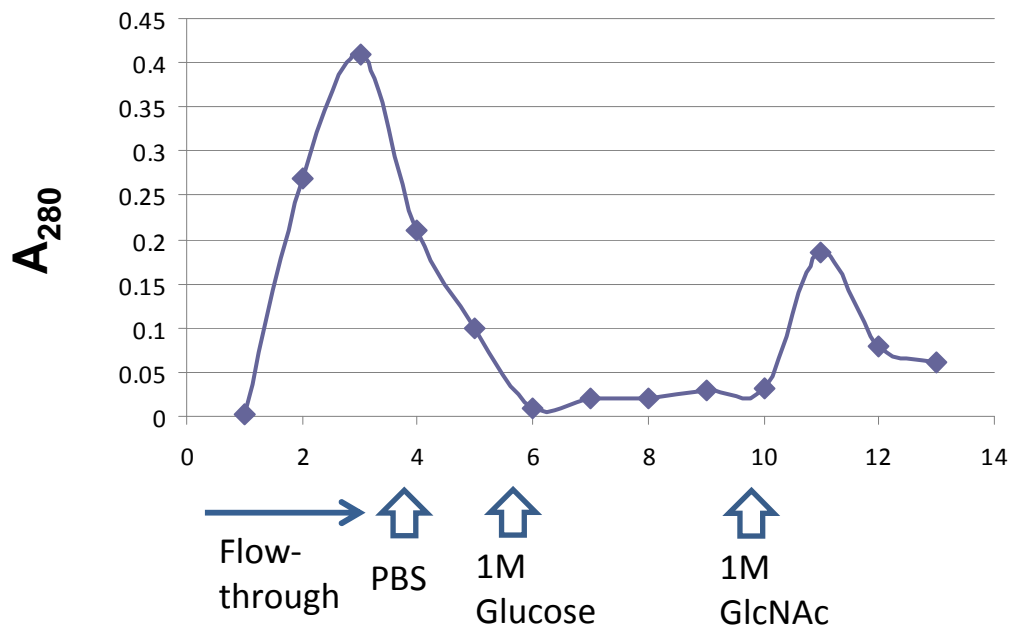


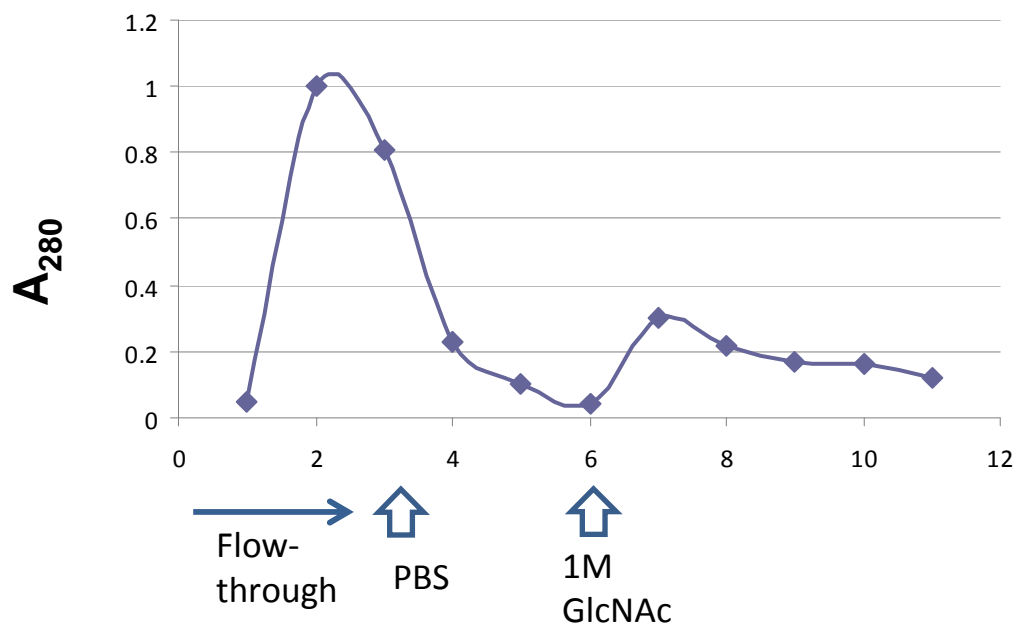
A

Sepharose 4B - Nictaba



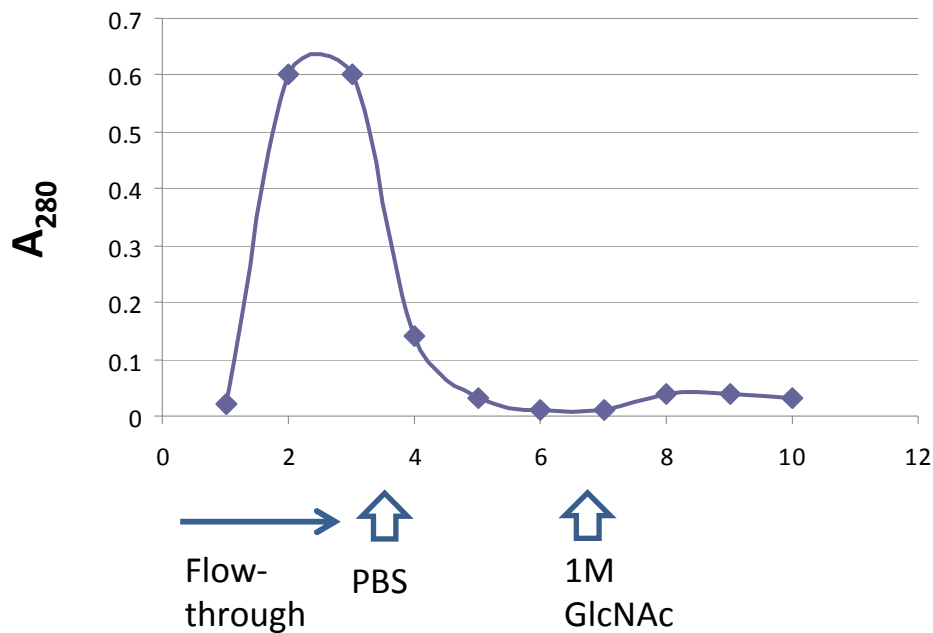
B

Sepharose 4B - WGA



C

Sepharose 4B



Supplemental Figure 3. Interaction of histone proteins with Nictaba-Sepharose 4B, WGA-Sepharose 4B and Sepharose 4B. Panel A: Histone proteins interact with a Sepharose 4B-Nictaba matrix and can be eluted with 1M GlcNAc, but not with 1M glucose. Panel B: Histone proteins interact with a Sepharose 4B-WGA matrix. Panel C: Histone proteins do not interact with the empty Sepharose 4B matrix. Approximately 10 mg of calf histone protein was chromatographed in panel B, whereas 5 mg of calf histone protein was analyzed in the chromatography shown panels A and C.