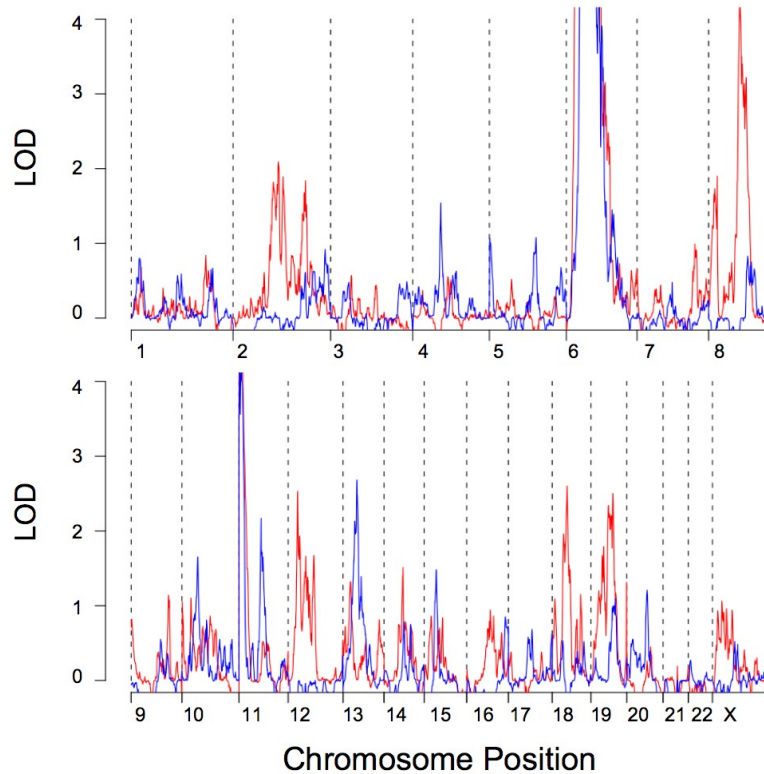


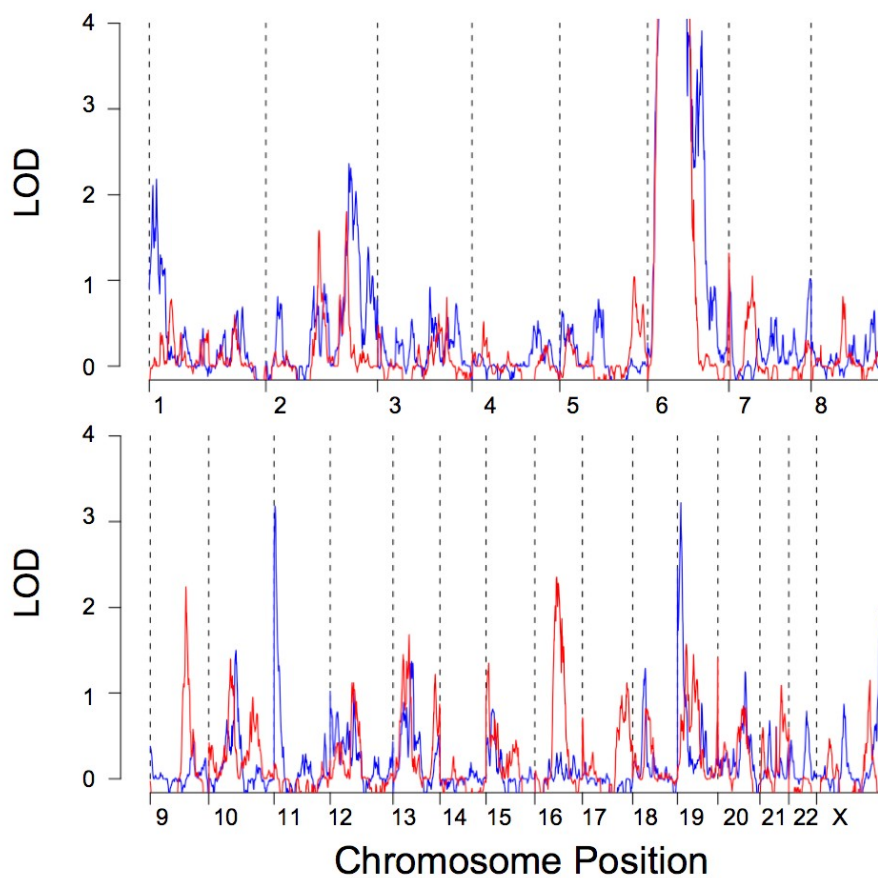
## SUPPLEMENTARY DATA

**Supplementary Figure 1. Linkage according to *INS* genotype.** ASPs from T1DGC sets 1 and 2 were selected according to whether they were both homozygous for the “A” allele at the -23/HphI SNP rs689 (red), or whether they each had at least one copy of the “T” allele (blue). LOD scores were calculated as described in Figure 1 legend. Note: the peaks on chromosome 11p are trivial because sibs were stratified according to *INS* genotype; this would force allele sharing IBD in each subset and hence increase apparent linkage.



SUPPLEMENTARY DATA

**Supplementary Figure 2. Linkage according to gender.** Male-only (blue) or female-only (red) ASPs from T1DGC sets 1 and 2 were extracted from the total dataset and LOD scores calculated as described in Figure 1 legend.



SUPPLEMENTARY DATA

**Supplementary Figure 3. Effect of age-of-diagnosis on type 1 diabetes linkage.** ASPs from T1DGC sets 1 and 2 were selected in which both were diagnosed before 5 years (red) or both after 15 years (blue) and LOD scores calculated as described in Figure 1 legend.

