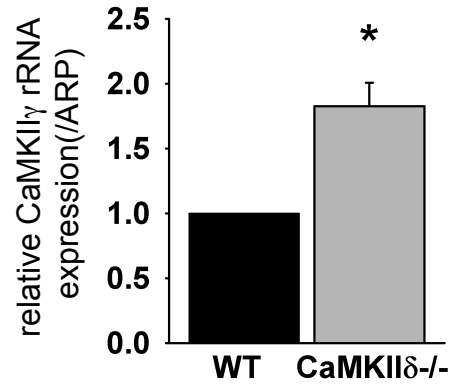
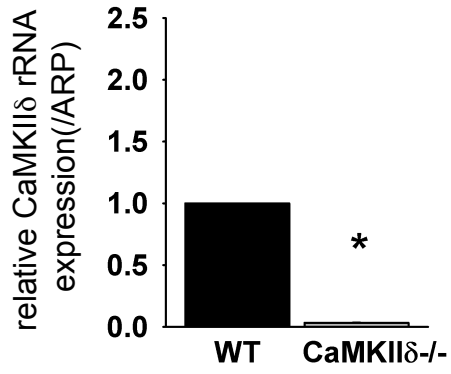
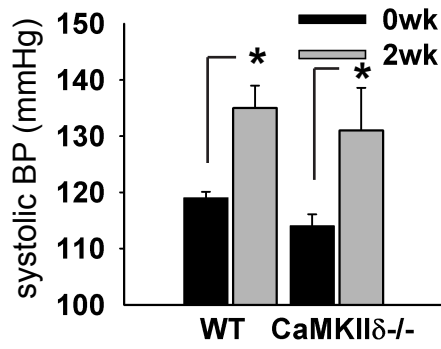


Supplemental figure 1

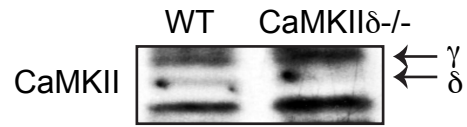
A



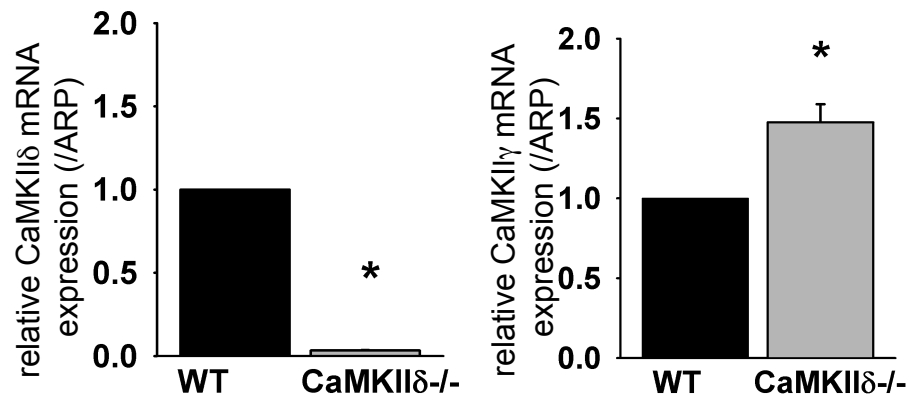
B



C



Supplemental Figure 2



Supplemental data

Figure 1: Vascular characteristics of CaMKII $\delta^{-/-}$ mice. (A) Quantitative rt-PCR for CaMKII γ and δ expression in the aorta of wild-type and CaMKII $\delta^{-/-}$ mice (n=4/group). Values are presented relative to wild-type. (*p<0.05) **(B)** Systolic blood pressures were measured by tail cuff method in CaMKII $\delta^{-/-}$ mice and controls at baseline or after infusion of 1.25 μ g/kg/min Ang-II for 14 days (n=5-6/group). **(C)** Immunoblots for CaMKII in the aorta. The lower band (~52 kD) represents CaMKII δ and is absent in CaMKII $\delta^{-/-}$ -aorta.

Figure 2: CaMKII isoform mRNA expression in VSMC. CaMKII γ and δ mRNA expression in CaMKII $\delta^{-/-}$ and wild-type VSMCs. The expression levels are adjusted to ARP and displayed as ratios relative to wild type.