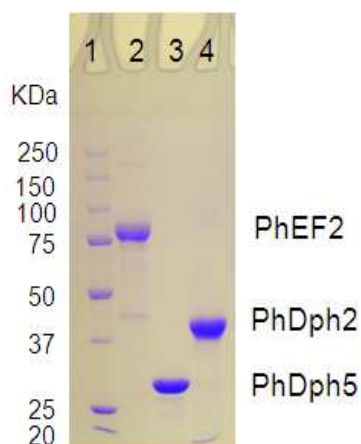


Supporting Information

Reconstitution of Dipthine Synthase Activity *In Vitro*

Xuling Zhu, Jungwoo Kim, Xiaoyang Su, and Hening Lin*

Department of Chemistry and Chemical Biology, Cornell University, Ithaca, New York, 14853



Supplementary Figure 1. Coomassie blue-stained gel showing the purified proteins used in the activity assay. 1, Protein marker; 2, PhEF2 (83 kDa); 3, PhDph5 (30 kDa); 4, PhDph2 (38 kDa)

Supplementary Table 1. Major observed masses in PhEF2 MALDI-MS spectra (Figure 2, 4, and 7) and the peptide fragments that correspond to the masses.

peptide fragment	calculated m/z	observed m/z
LLDAQVHEDNVHR	1545.78	1545.80
LLDAQVHEDNVH(ACP)R	1646.83	1646.84
LLDAQVHEDNVH(ACP-Me)R	1660.84	1660.83
LLDAQVHEDNVH(ACP-Me ₂)R	1674.86	1674.84
LLDAQVHEDNVH(3-carboxy-2-propenyl)R	1629.80	1629.77
QLVLDQFDEQEQR	1590.78	1590.80