

Supporting Figure S2

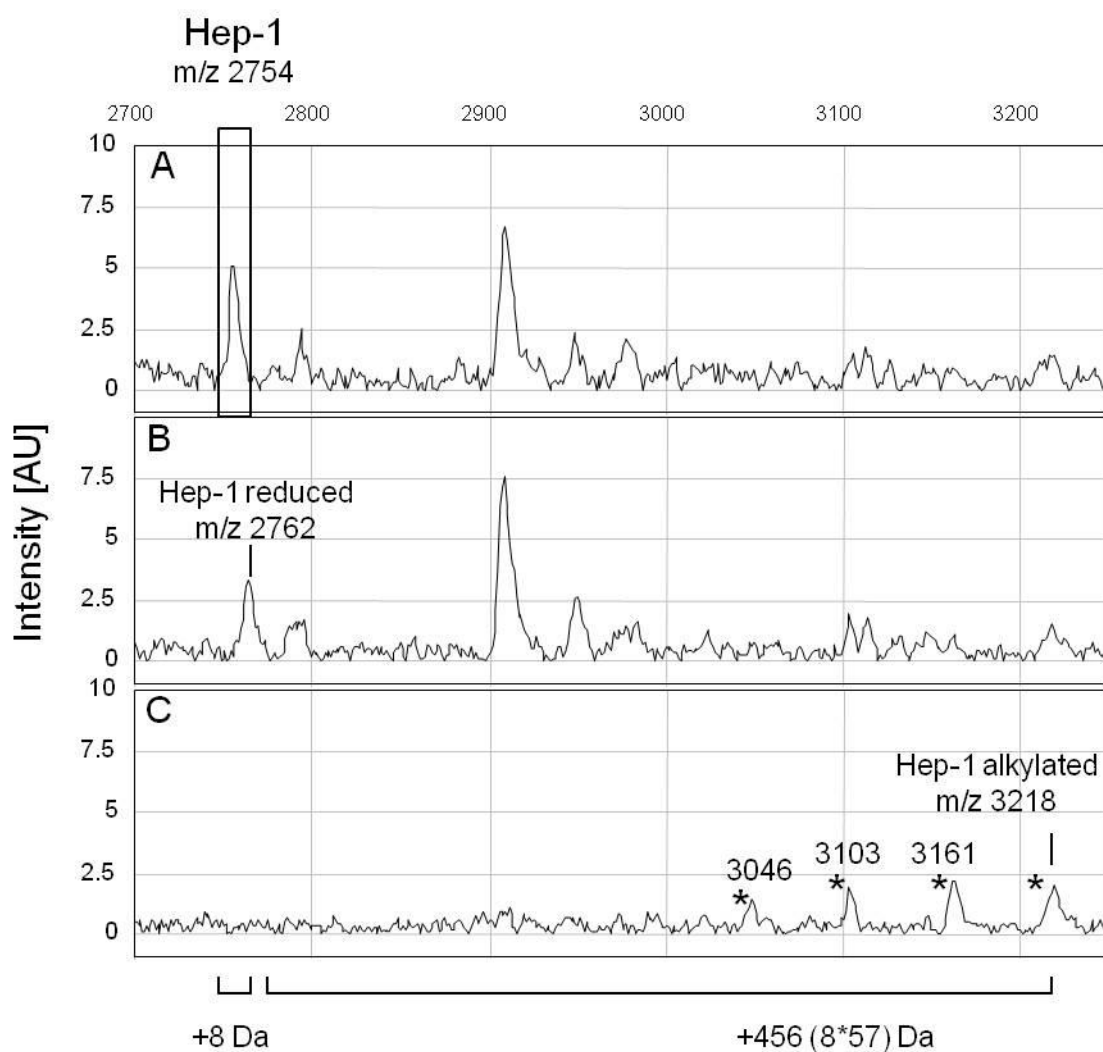


Figure S2. Hep-1 contains 4 disulphide bridges. TOF MS profile of a FVB mouse serum sample before (A) and after reduction with DTT (B) and alkylation with IAA (C). Respective mass shifts of +8 Da and +456 Da specify the reduction of 4 disulfide bonds. Note that a partial reaction resulted in an alkylation ladder (peaks indicated with *) with size difference of 57 Da per moiety (from 5 to 8 modifications). Intensity is given in arbitrary units (AU).