

Supporting Figure S3

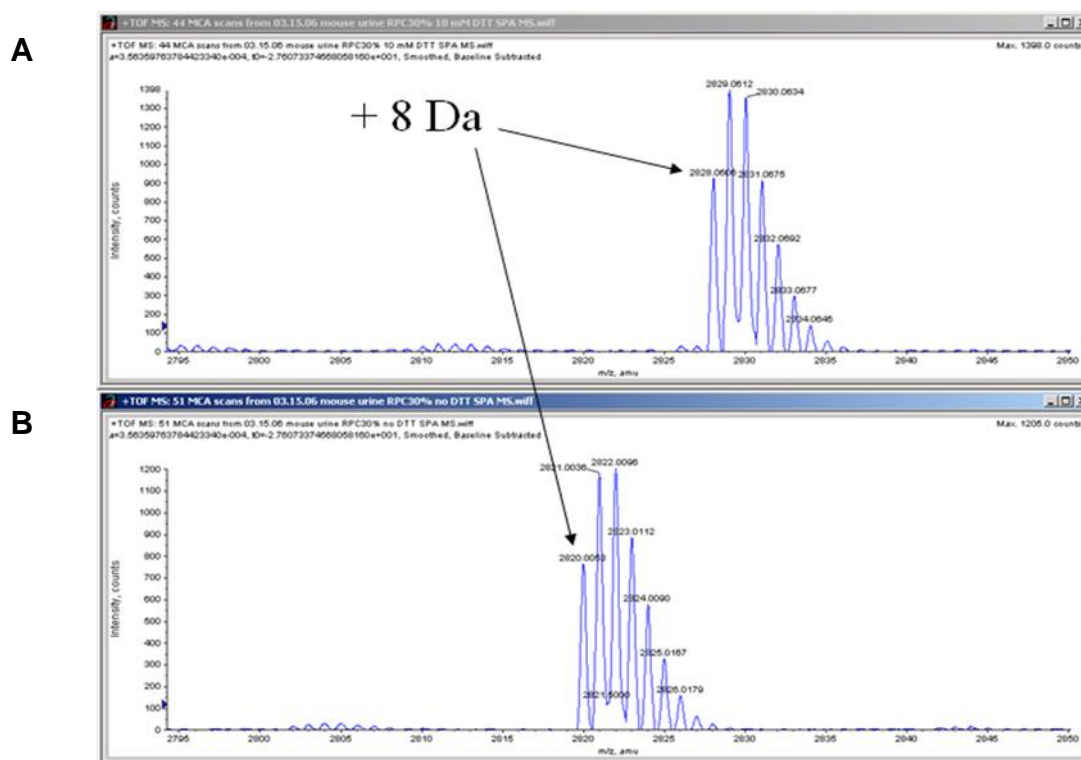


Figure S3. Hep-2 contains 4 disulphide bridges. Hep-2 was enriched by IMAC-Cu²⁺ on-chip chemistry from urine of a C57Bl6 mouse and analyzed by Q-STARXL MS before (A) and after (B) reduction with DDT; upper spectrum shows reduced Hep-2 (m/z 2828) and lower spectrum: native Hep-2 (m/z 2821). Note that monoisotopic [M+H]⁺ masses as measured by Q-STARXL MS are about 1 Dalton lighter than the average masses measured by TOF MS.