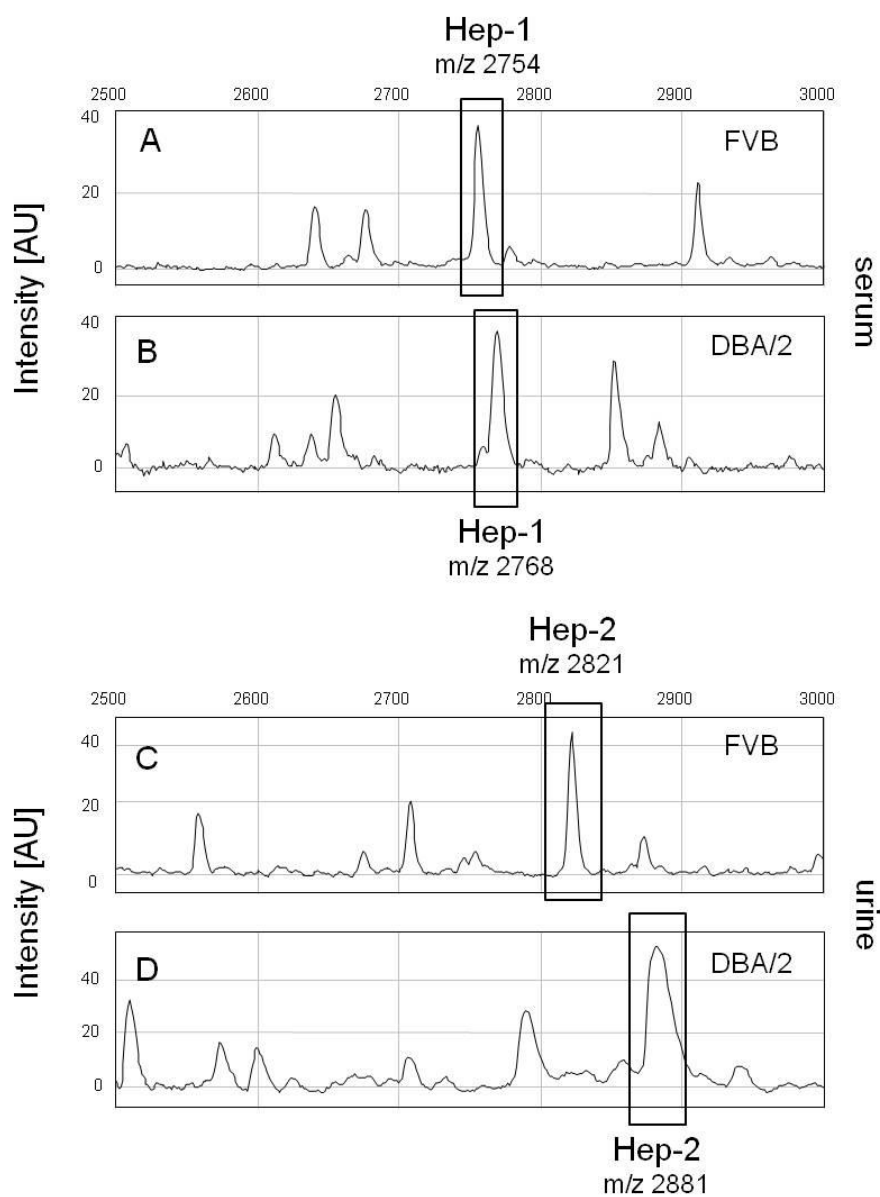


## Supporting Figure S6



**Figure S6.** Distinct urine and serum Hep-1 and Hep-2 forms in diverse mouse strains. **A**, IMAC-Cu<sup>2+</sup> TOF MS serum profile of a FVB mouse, **B**, serum profile of a DBA/2 mouse, **C**, urine profile of FVB mouse, **D**, urine profile of DBA/2 mouse. Note that DBA/2 mice have, in contrast to other mouse strains, an Asn16Lys substitution in mature Hep-1 resulting in a theoretical mass of 2768 Da and a Ser18 Phe substitution; in mature Hep-2 resulting in a theoretical mass of 2881 Da (see Figure S1). The measured mass shifts in Hep-1/-2 in serum and urine from DBA/2, match with the altered amino acid composition. Positions of Hep-1 and Hep-2 are indicated. Peak intensity is given in arbitrary units (AU).