

Supporting Figure S7

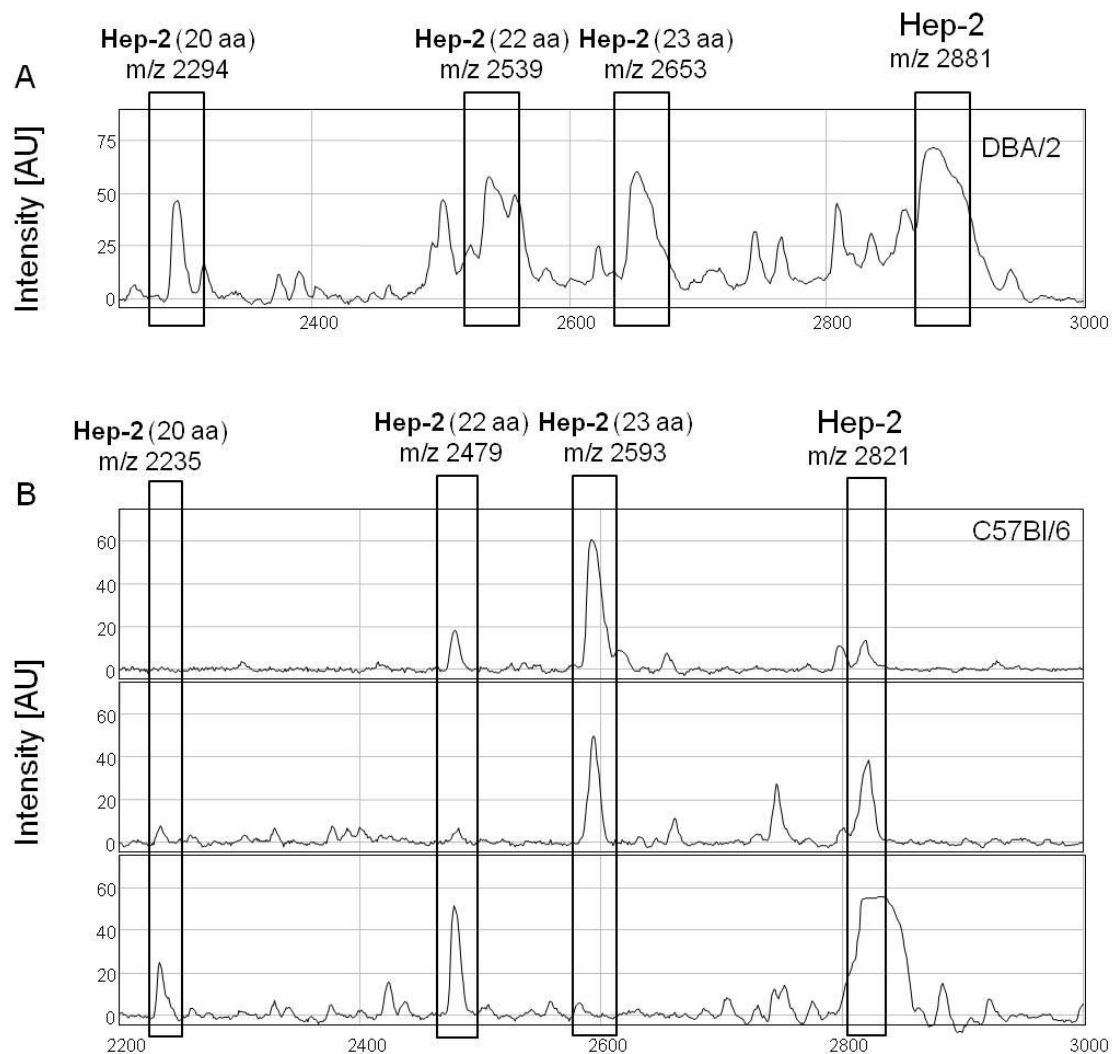


Figure S7. IMAC-Cu²⁺ TOF MS profiles showing isoforms of Hep-2 in the urine of **A**, a DBA/2 mouse (n=1), and **B**, C57Bl/6 mice (n=3). Note that Hep-2 from DBA/2 mice has a deviant mass of 2881 Da (instead of 2821 Da for other mouse strains) due to a Ser18 Phe substitution in the mature part of Hep-2. The masses of the indicated Hep-2 isoforms match to the theoretical masses of amino-terminal truncated 23, 22 and 20 amino acid (aa) forms of Hep-2. Panel B illustrates the inter-mouse heterogeneity in Hep-2 (isoform) levels in mouse urine. Intensity is given in arbitrary units (AU).