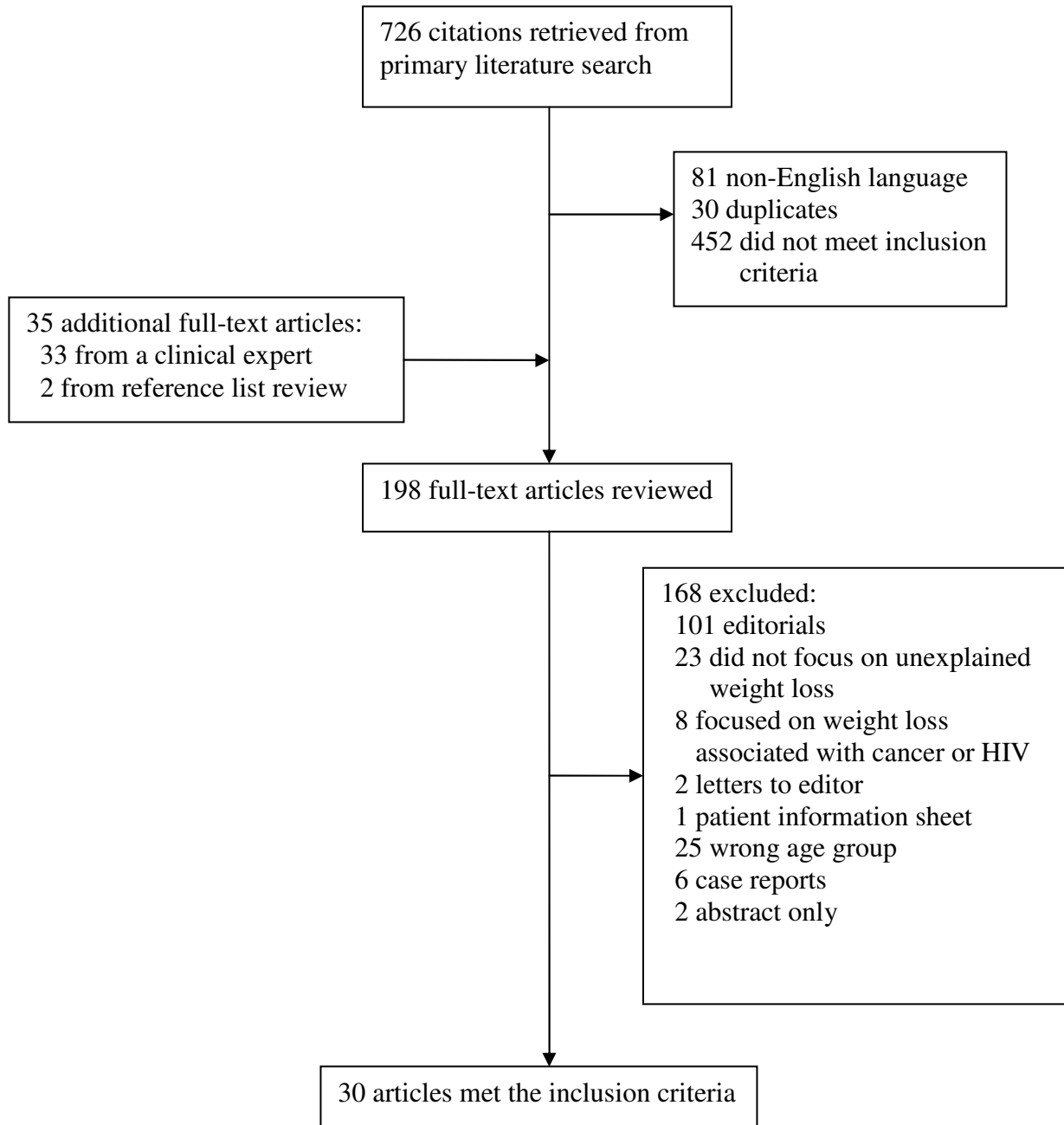


Appendix 1: Search results



Details of Search Strategy

Searches of Medline (and Medline in-process), Embase, CINAHL and Ageline were conducted from 1980 to September 2009 to identify relevant studies. We defined weight loss within the search to include the keyword terms unexplained, unintentional or “not intentional”, unintended or “not intended”, unplanned or “not planned”, involuntary, inadvertent, unpremeditated and unexpected or “not expected” combined with (weight or body mass) and (loss or losing or lost or decrease*) or combined with MESH terms exp weight loss or cachexia or anorexia or failure to thrive. We used the sensitive clinical queries hedge to include Diagnosis as a concept. We used subheadings of DI, TH, DT or the keywords history, presents, presentation. All sets were limited to middle-aged or aged. Variations of the search were used as appropriate in databases other than Medline.