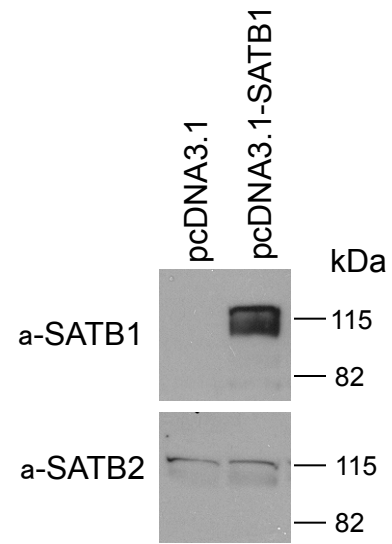
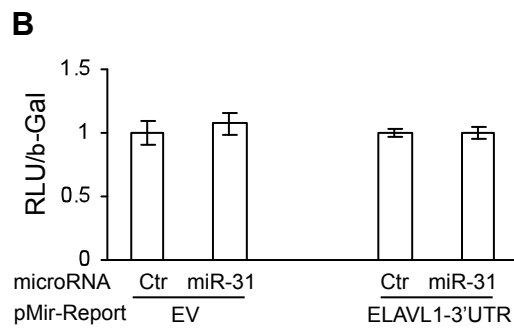
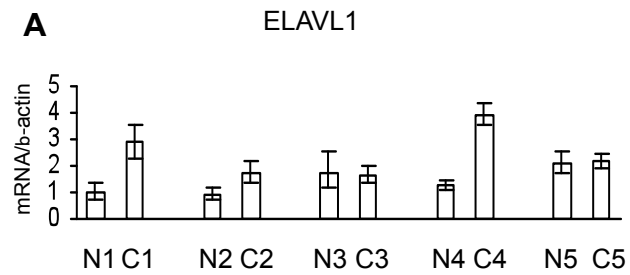


Supplementary Fig. S1 Vimentin and cytokeratin staining of fibroblasts.



Supplementary Fig. S2

SATB2 antibody specificity. Recombinant SATB1 protein or vector control were ectopically expressed in HeLa cells and protein lysates were analyzed by western blotting using anti-SATB1 or anti-SATB2 antibody.



Supplementary Fig. S3

ELAVL1 (HuR) is upregulated in the majority of CAFs but is not targeted by miR-31.

A. Quantitative RT-PCR of ELAVL1 in normal (N) fibroblasts and CAFs (C).

B. Luciferase reporter assay with pMIR-Report vector with or without 3'UTR of ELAVL1.