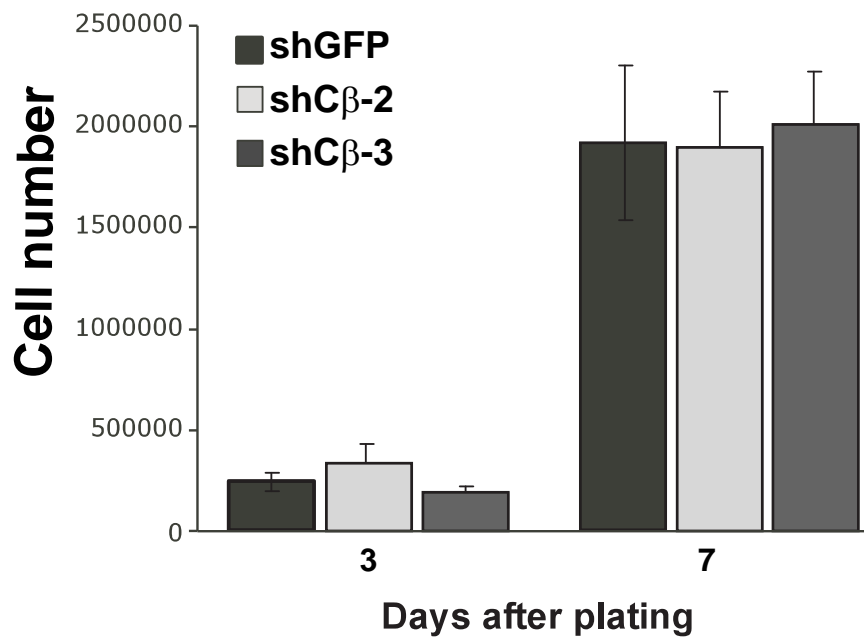
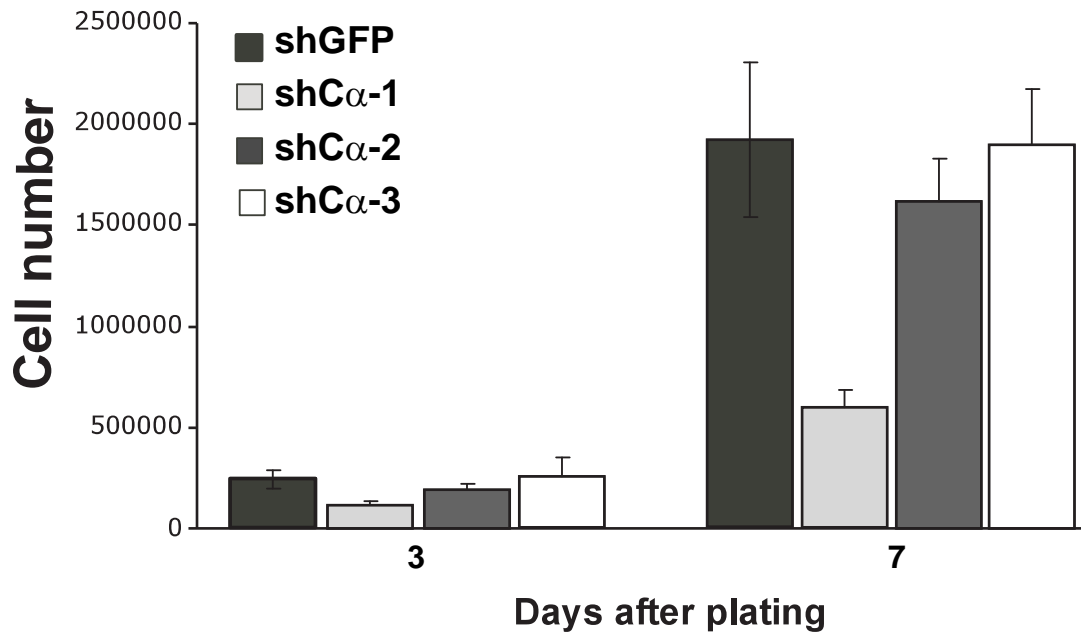


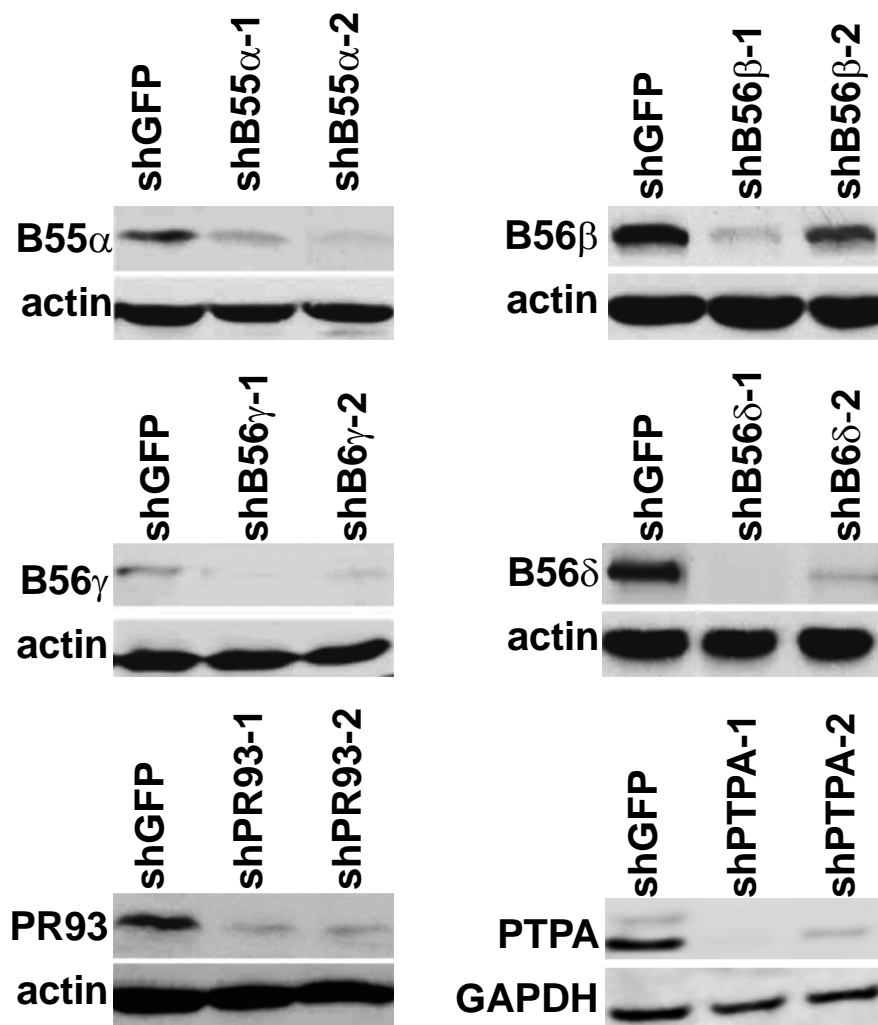
## Supplemental Figure 1



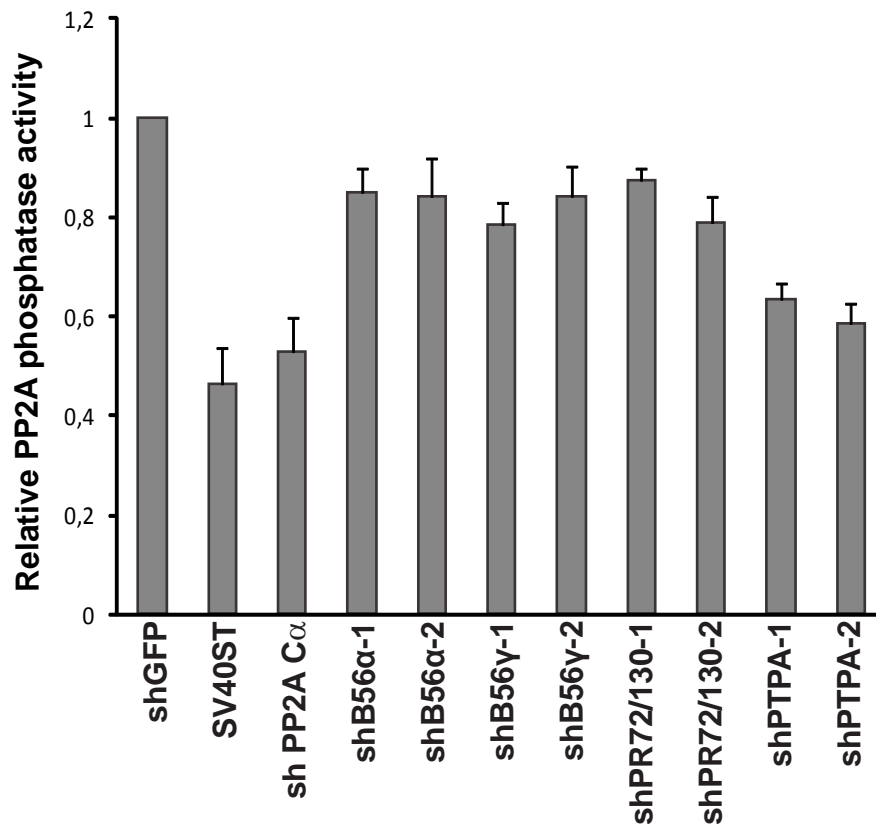
**Supplemental Figure 1. Effect of PP2A C $\alpha$  and C $\beta$  suppression on cell proliferation.** Proliferation of HEK TER cells expressing shGFP or different shRNAs targeting PP2A C $\alpha$  and C $\beta$ .

**Primers used to assess expression of PP2A regulatory subunits**

<b>Gene Name</b>	<b>Primer #</b>	<b>Sequences</b>
B55 $\alpha$	SV019	TCTGCCCGCCCCCTCCTTCCTTTTC
	SV020	CTGCTGGGTTCCTCGGGGTCTCC
B55 $\beta$	SV021	CCGCCGCAGCCTCGCAGAAC
	SV022	GGGAACCAGAAGCCGGCAGACAAG
B55 $\gamma$	SV023	TGCCACCCCTCTGAGTCGTCTTT
	SV024	GCTGGGTCTGTTTCCTGGGTATG
B56 $\alpha$	SV025	CCCGTGCCCCCGCCTCAG
	SV026	GCCCGCCAACGCCTCACG
B56 $\beta$	SV027	ATCCGGGGGCTGCTCAAATACTGG
	SV028	AGCCCGCTCTGCAACCTGGAAATG
B56 $\delta$	SV029	GCTGCCCGAGTCCTCCCCATCAT
	SV030	AACCGGCCCTTCTGCTTCTCTGC
B56 $\epsilon$	SV031	GTATCTAGCCCCCATTTTCAGGTG
	SV032	ATAGCCGGATTCCAATGTTCTTT
B56 $\gamma$	SV033	TCAAATACTGGCCAAAGACTCACA
	SV034	TGCGGTACAAGGAAGGAAACA
PR48	SV035	CGCGGCCAAGTTCGTCCATCT
	SV036	CAGCCCCGGGTGCGTGTTTC
PR72/PR130	SV039	TTGCGAAGGGTAAAAACTCTAAT
	SV040	GGGCTCGATCCTCTTCCTCTAT
PR93	SV041	ACGGTCTCAGCGGGTAAGGTC
	SV042	TCACTGTCATCGGCATTTTCTAAG
PR110	SV043	ACAGCCCCAGCCAAAAGAGCACT
	SV044	ATAGGGGTCGATGTTGGGATTAG
PTPA	SV045	AGCCGGCAGCCAGGGAGTGTG
	SV046	AGGAAGGGACGGCGCTGATGTT

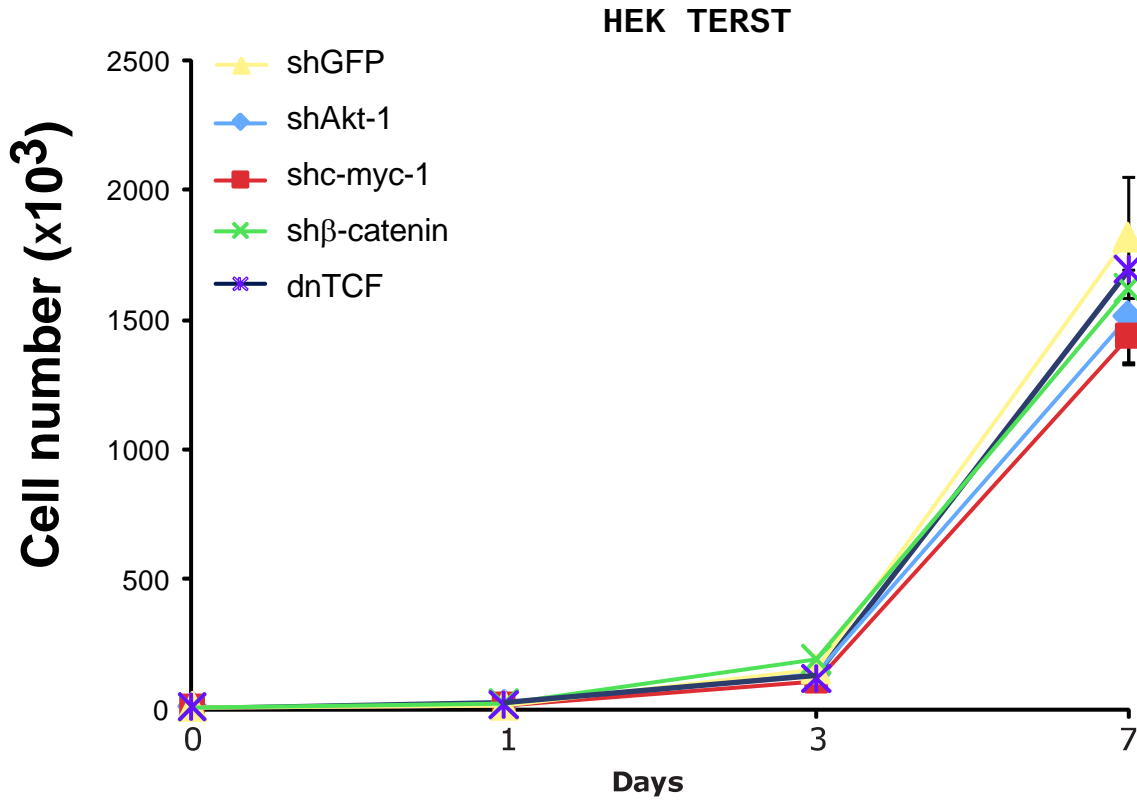


**Supplemental Figure 3. Suppression of PP2A regulatory subunits by specific shRNAs.** Immunoblot analysis of the expression of PP2A B55 $\alpha$ , B56 $\beta$ , B56 $\gamma$ , B56 $\delta$ , PR93, and PTPA after introduction of specific shRNAs.



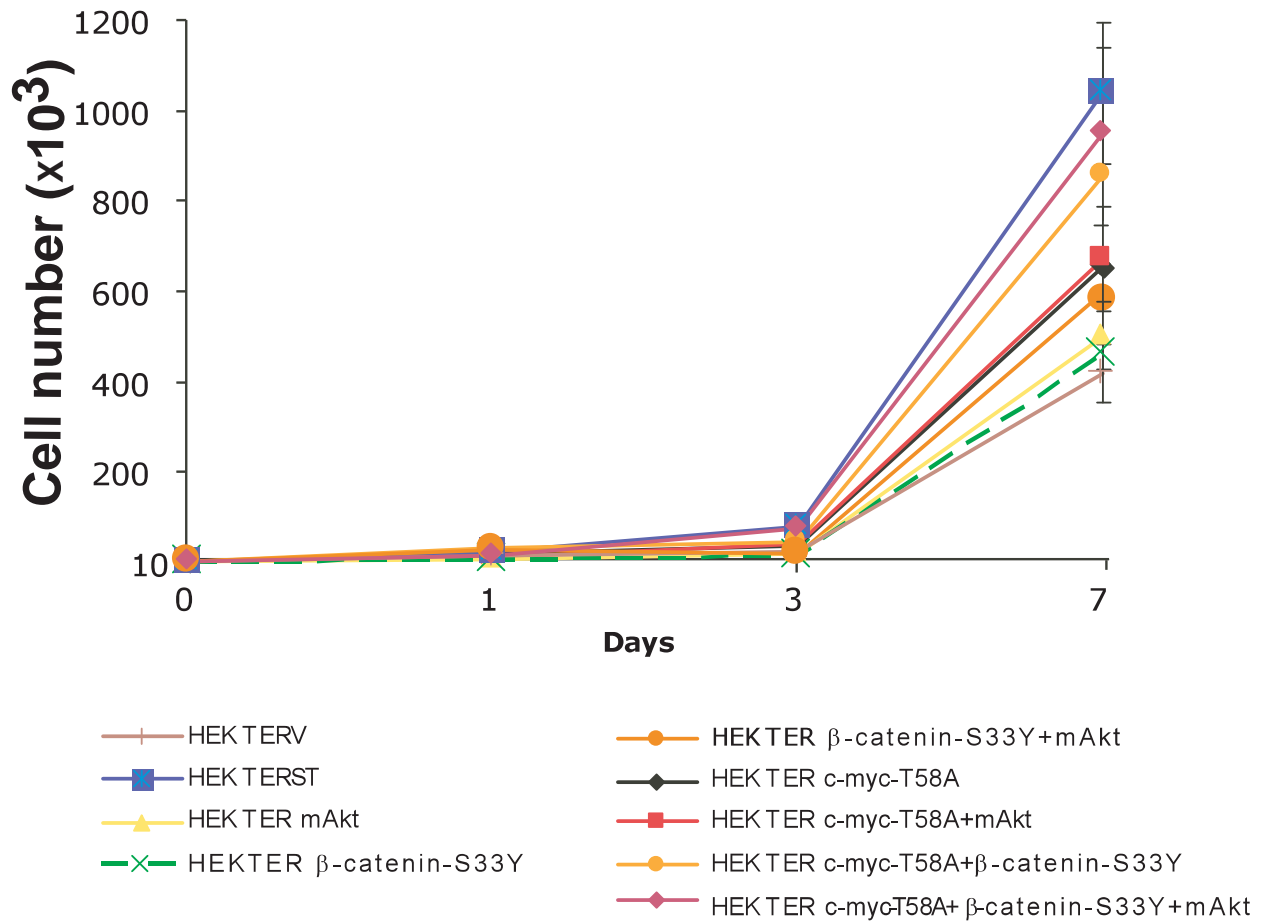
**Supplemental Figure 4. PP2A phosphatase activity after suppression of different PP2A subunits.**

PP2A associated phosphatase activity in HEK TER cells expressing SV40ST or specific shRNAs targeting the indicated PP2A subunits.



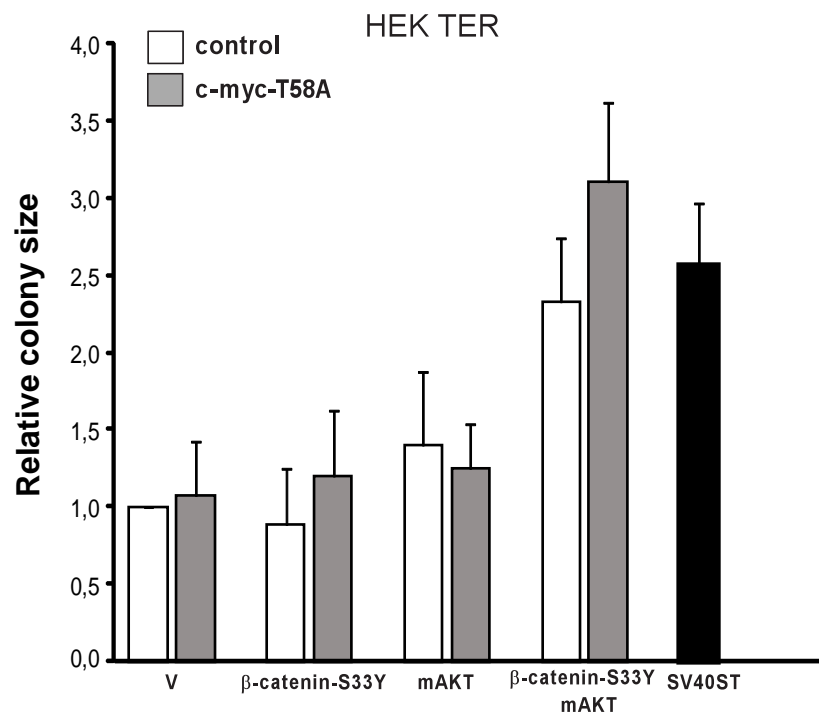
**Supplemental Figure 5. Effect of  $\beta$ -catenin, Akt, or c-myc suppression on cell proliferation.**

Proliferation of HEK TERST cells expressing shGFP, dnTCF or shRNAs targeted  $\beta$ -catenin, Akt-1, and c-myc.



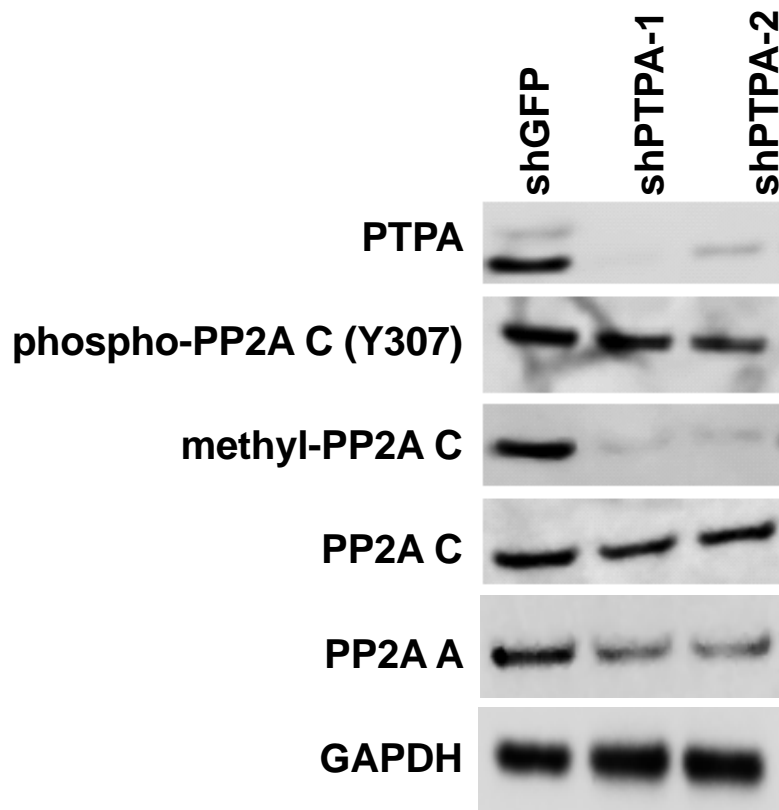
### Supplemental Figure 6. Effect of $\beta$ -catenin, Akt, or c-myc on cell proliferation.

Proliferation of HEK TER cells expressing control vector (v) or pairwise combinations of the indicated genes.



**Supplemental Figure 7. Cooperation between  $\beta$ -catenin, c-myc, and Akt to induce cell transformation.**

Effect of a pairwise expression of c-MycT58A,  $\beta$ -catenin-S33Y, and myr-Akt in HEK TER cells on the size of soft agar colonies.



**Supplemental Figure 8. Effects of PTPA suppression on stability and modifications of PP2A subunits.**

Immunoblot analysis of PTPA, PP2A A and C expression as well as levels of methylated PP2A C in HEK TER cells expressing shRNAs targeting PTPA.