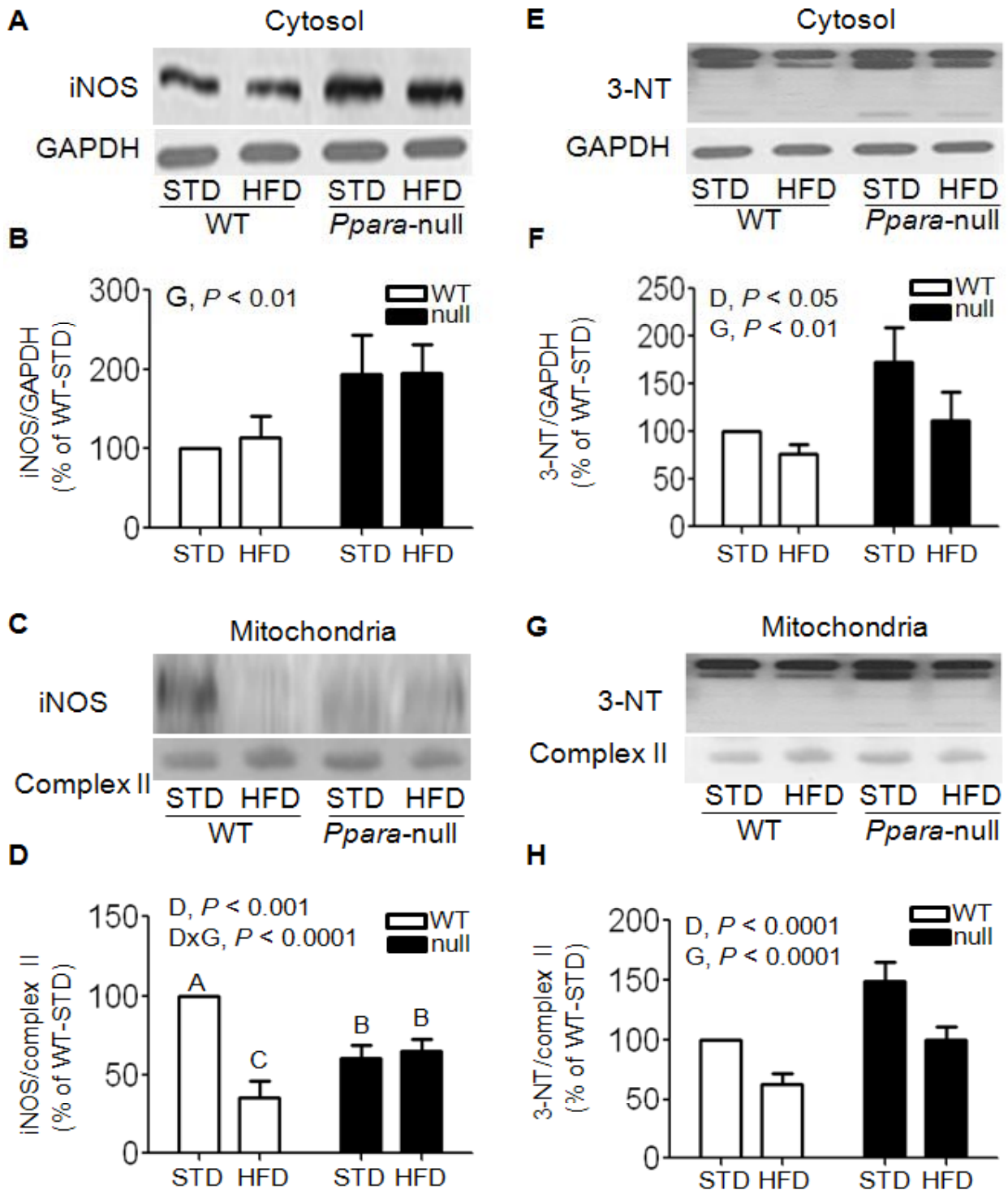


ONLINE SUPPORTING MATERIAL



Supplemental Figure 1. Hepatic levels of the cytosolic (A,B) and mitochondrial iNOS (C,D), and nitrated proteins (E-H), determined by respective immunoblot analysis after normalizing with cytosolic GAPDH (B,F) and mitochondrial complex II subunit (D,H), respectively. Significant differences were observed between genotype (G) and diet (D) following two-way ANOVA. Differences in mitochondrial iNOS protein levels were assessed by ANOVA followed by Tukey's studentized range test (see Methods). The mean values marked with different letters represent significant differences, $P < 0.05$.