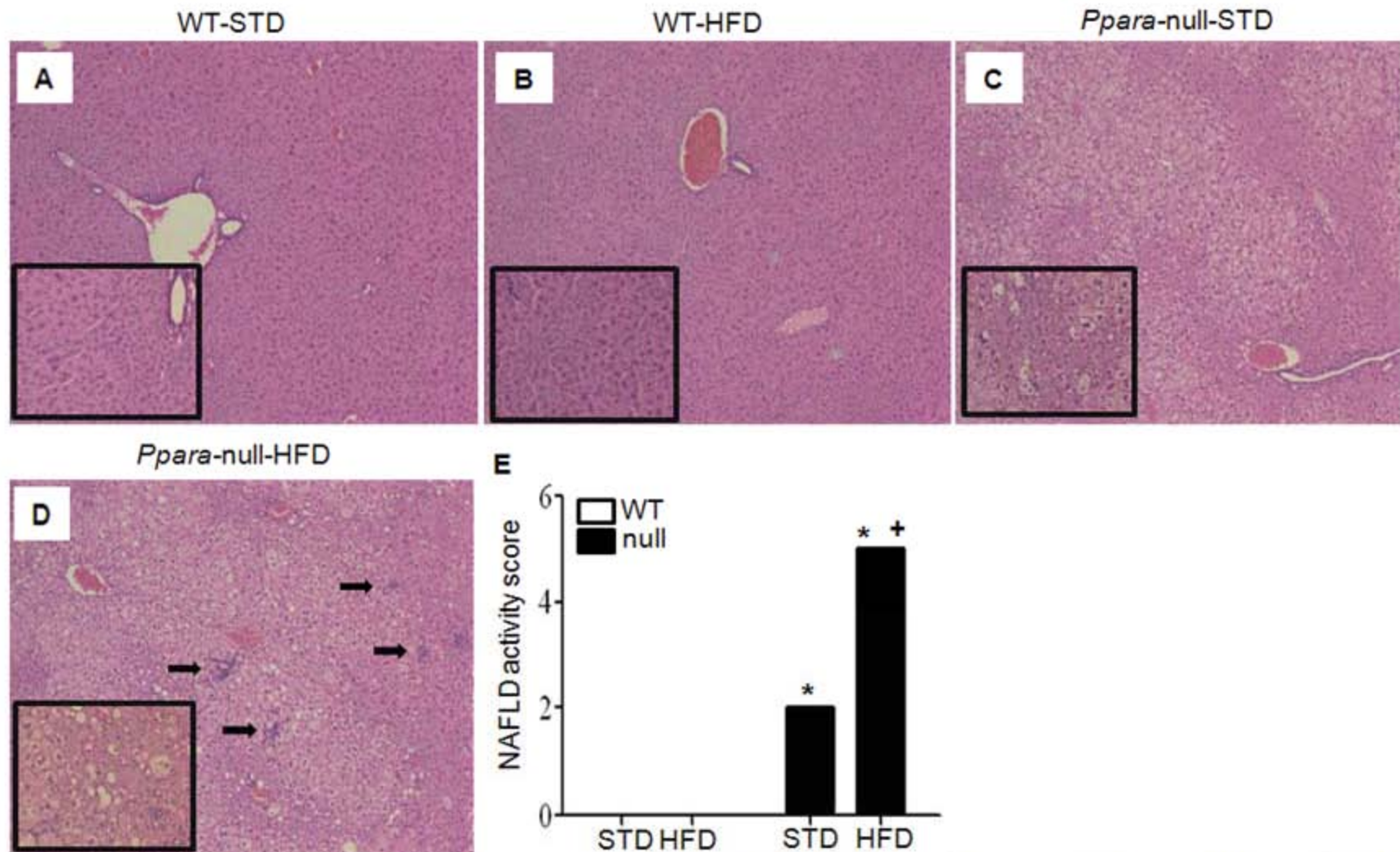


ONLINE SUPPORTING MATERIAL



**Supplemental Figure 2.** The color version of Figure 1 for histological representation of differently-fed mouse livers. Hematoxylin and eosin staining (200x) of the indicated mouse liver specimens (A-D, n=3~4/group), showing intracellular lipid accumulation, inflammation, and NAFLD activity score (14). The enclosed box in each Figure represents the enlarged images (400x) while black arrows (D) indicate inflammatory foci. Values represent means  $\pm$  S.E.M., n=4 or 3 (WT-STD). \*significantly different than corresponding WT group,  $P=0.05$ . +significantly different from Null-STD,  $P=0.05$ .