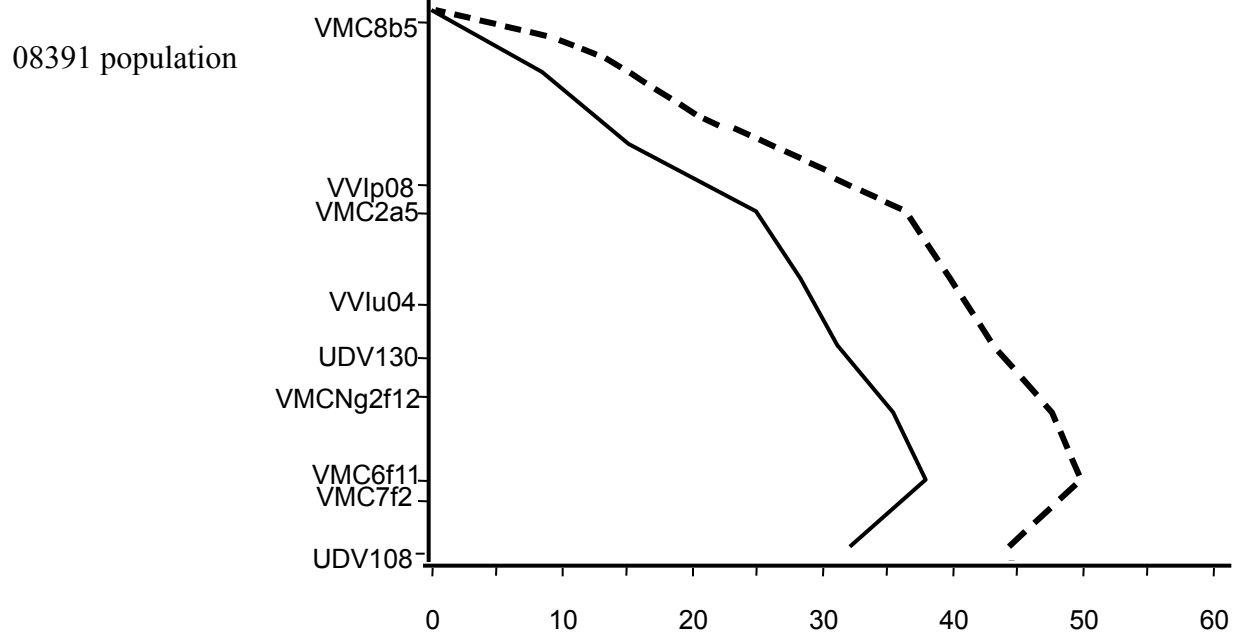
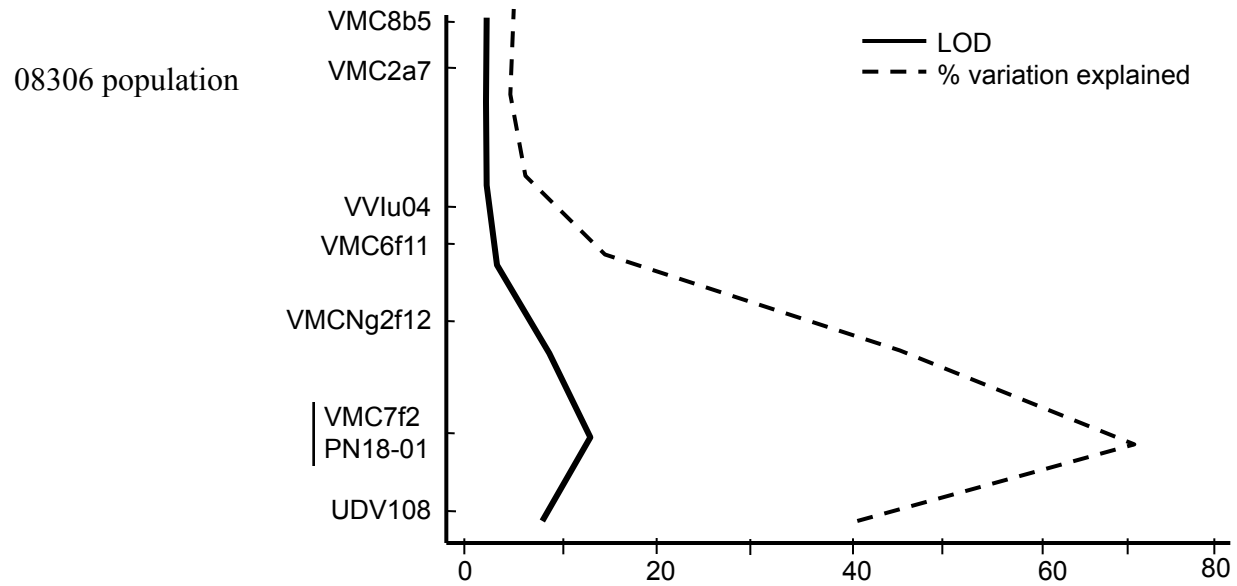
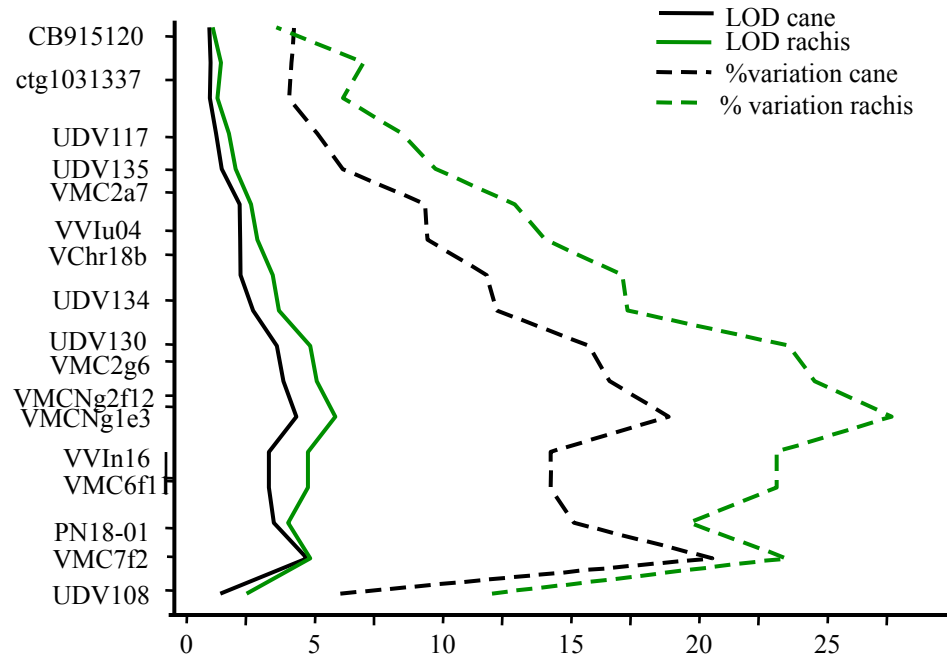


Supplemental Figure 1. Localization of the powdery mildew resistance locus from four populations on chromosome 18. Solid lines indicate the LOD scores and dashed lines indicate the % phenotypic variation explained by the locus. Only leaf scores were used for 08306 and 08391 populations (resistance from *V. romanetii* and *M. rotundifolia* cv. Trayshed, respectively). The 06708 and 06712 populations derive resistance from *M. rotundifolia* cv. Magnolia. All four tissue types from the 06712 population were scored for powdery mildew resistance. The VMC7f2 marker is linked to resistance in all studied populations.



06708 population



06712 population

