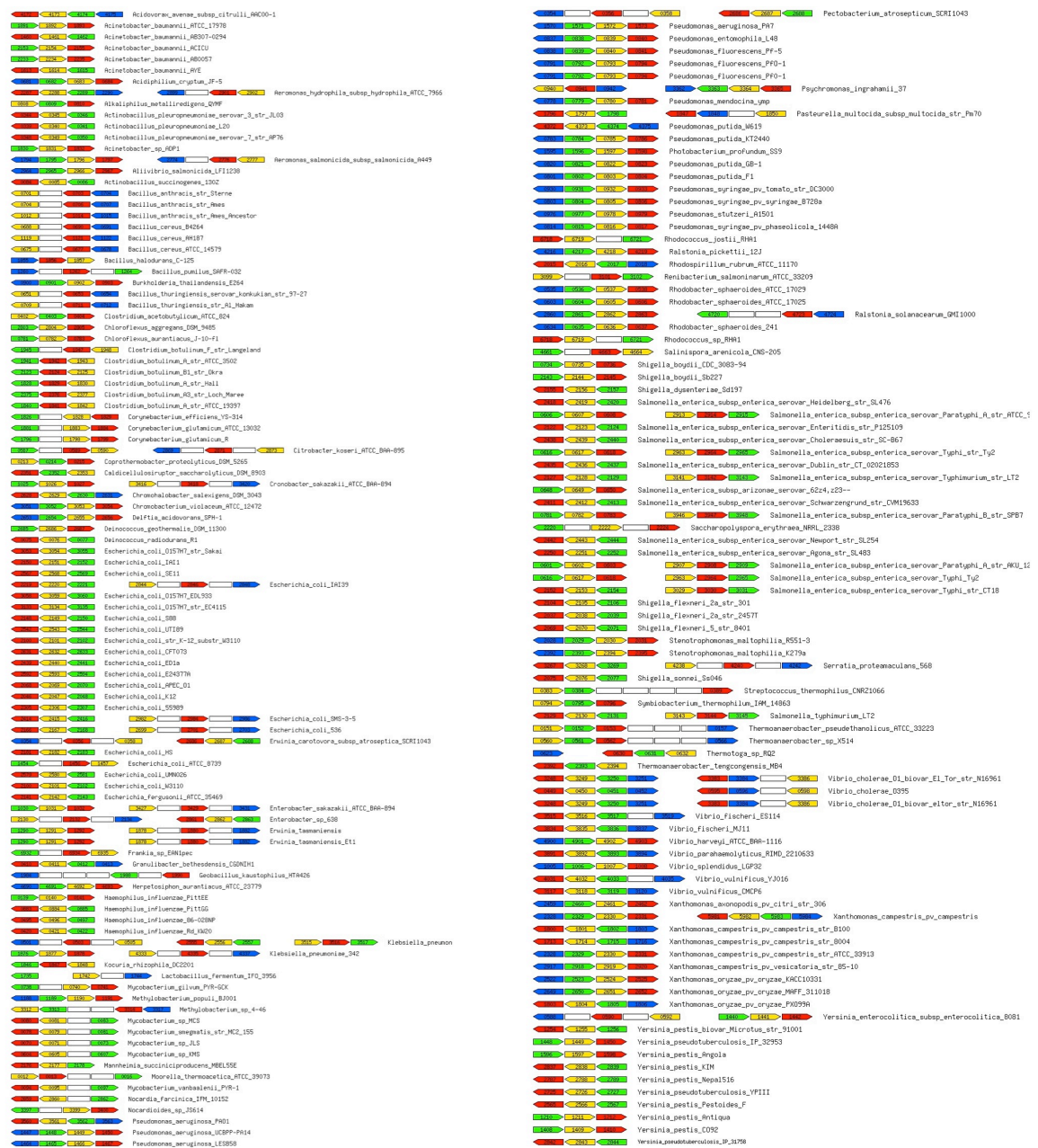


1 Supplemental Figure S3. Organization of the fructose operon in bacteria

2



3

4

5 Genomic comparisons of the organization of the fructose operon reveal differences between species, e.g.
6 position and orientation of the regulator *Cra* (*FruR*). Duplicate *fru* genes
7 are not infrequent. Note similarities in the organization of the operon of *E. coli* and *S. typhimurium*, and
8 their difference in respect to *Pseudomonas*. Color code: *fruB* in green, *fruA* in red, *fruK* in yellow and *cra*
9 (*fruR*) in blue. Other genes found in or adjacent to the *fru* operon are shown as empty boxes.