

Supporting information for ‘Iron oxide nanoparticles with a fluorescent and tunable coating to allow multimodal imaging of gene delivery to different cell populations in the liver’

David P. Cormode¹, Gitte O. Skajaa¹, Amanda Delshad,¹ Nicole Parker², Peter A. Jarzyna¹, Claudia Calcagno¹, Merav W. Galper,¹ Torjus Skajaa^{1,3}, Karen C. Briley-Saebo¹, Heather M. Bell⁴, Ronald E. Gordon⁴, Zahi A. Fayad¹, Savio L. C. Woo², and Willem J. M. Mulder^{1,2*}.

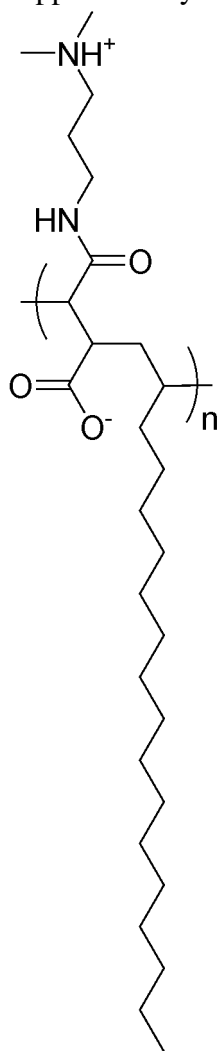
(1) Translational and Molecular Imaging Institute, Mount Sinai School of Medicine, One Gustave L. Levy Place, Box 1234, New York, NY 10029, Tel: 212-241-6858, Fax: 240-368-8096, willem.mulder@mountsinai.org

(2) Department of Gene and Cell Medicine, Mount Sinai School of Medicine, New York, NY

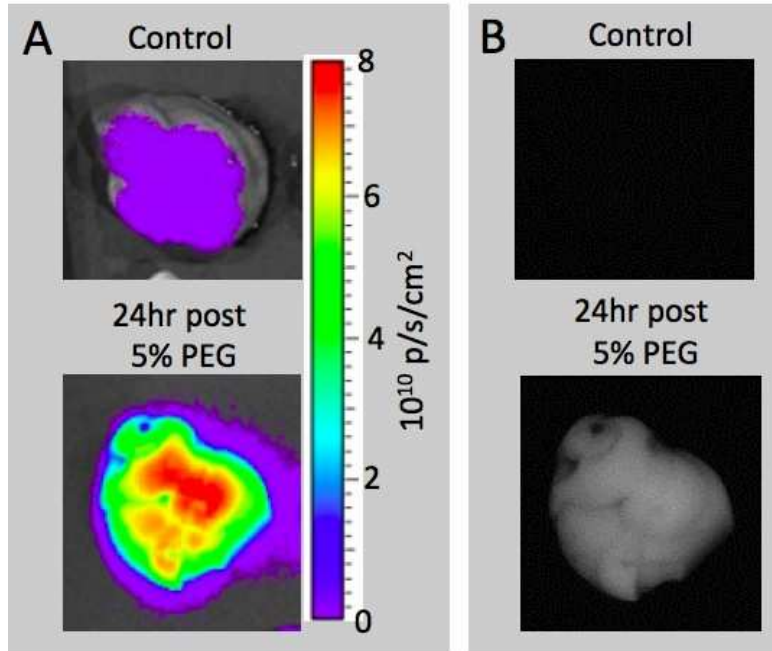
(3) Faculty of Health Sciences, Århus University, Vennelyst Boulevard 9, 8000 Århus C, Denmark

(4) Department of Pathology, Mount Sinai School of Medicine, New York, NY

Supplementary figures:



Supplemental Figure 1 Structure of the polymer used to coat the iron cores, poly (maleic anhydride-alt-1-octadecene) substituted with 3-(dimethylamino) propylamine.



Supplemental Figure 2 A) Color-coded B) unprocessed images (non-color coded) of the livers depicted in **Figure 4B**