

Figure S1. HIV-1 transfer between T cells and epithelial cells but not human or murine podocytes. HIV Gag-iGFP transfected Jurkat cells (donor cells) were cocultured with target epithelial cell HK-2 (**A**), human podocyte (**B**) or mouse podocyte (**C**) for 3h. Epithelial cells were labeled with CMTMR orange. Numbers within the gate show percentage of target cells that acquired GFP signal from donor cells.

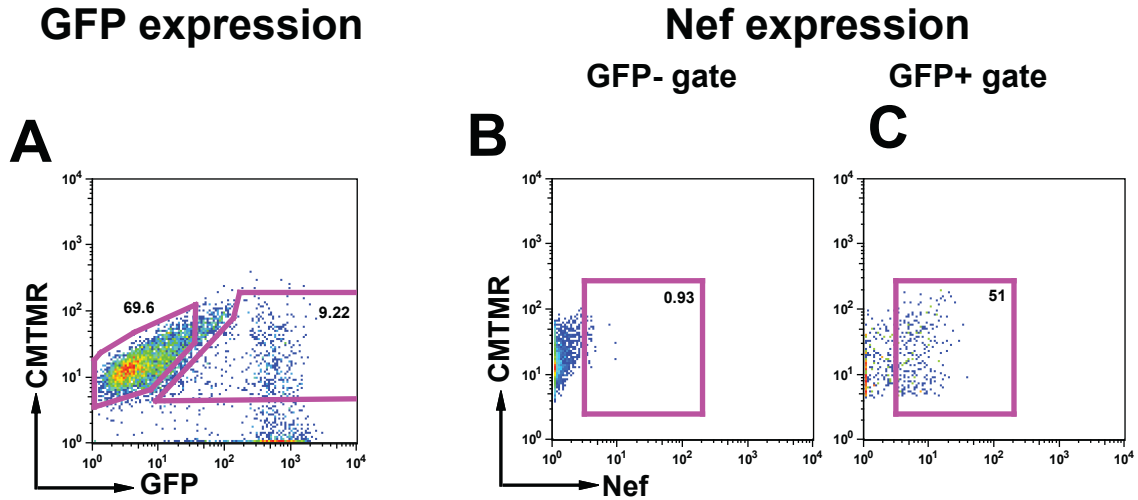


Figure S2. HIV-1 Nef expression in target HK-2 cells after exposure to cell-associated HIV. **(A)** GFP positive HK-2 cells were identified after exposure of cells to cell-associated HIV-NL-GI (as described in Figure 6) analyzed at 48h post infection by intracellular staining of cells with anti-Nef monoclonal antibody. **(B)** GFP-negative (GFP-) showed low anti-Nef reactivity. **(C)** GFP-positive (GFP+) populations exhibited higher Nef-specific staining. Numbers in gates indicate the percentage of GFP or Nef-positive cells.