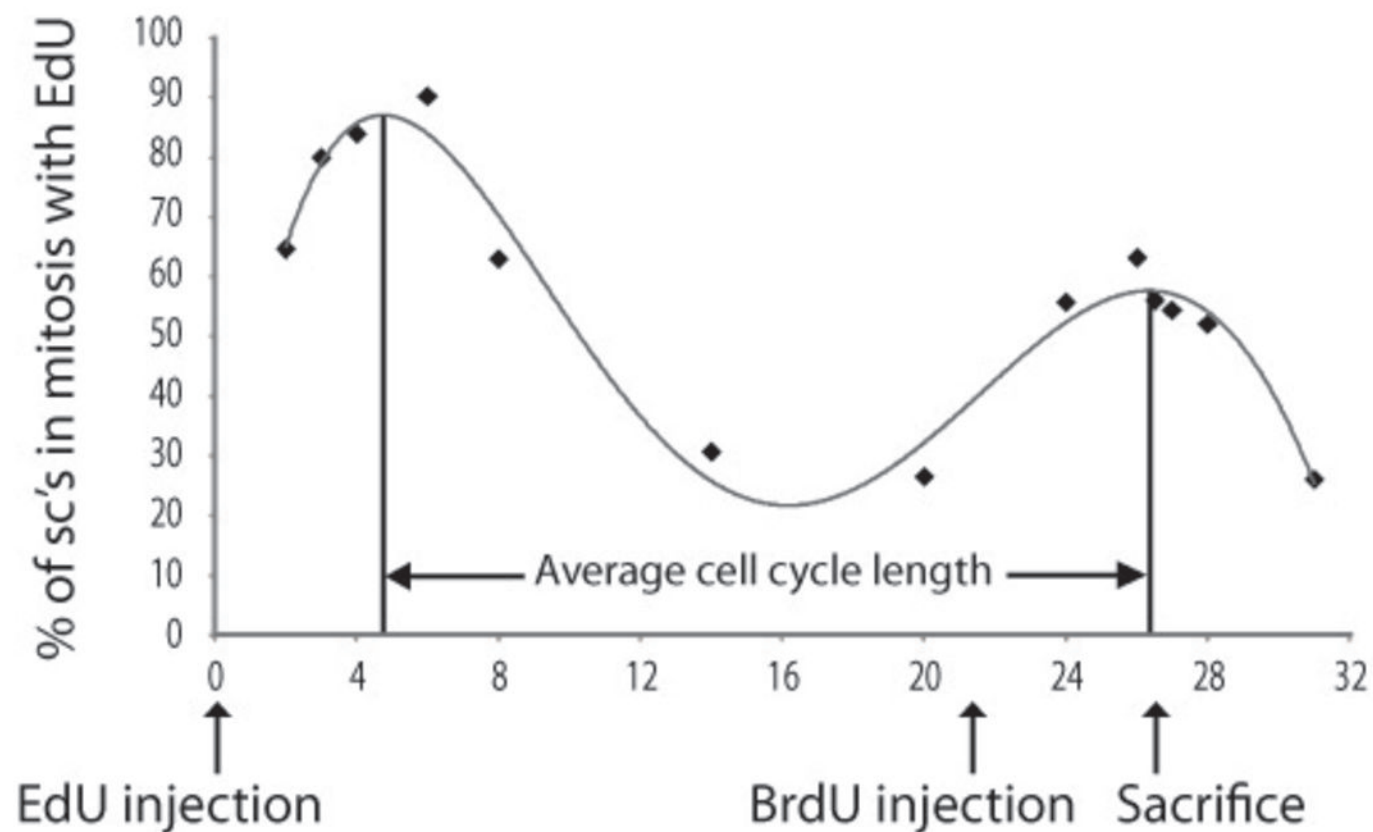


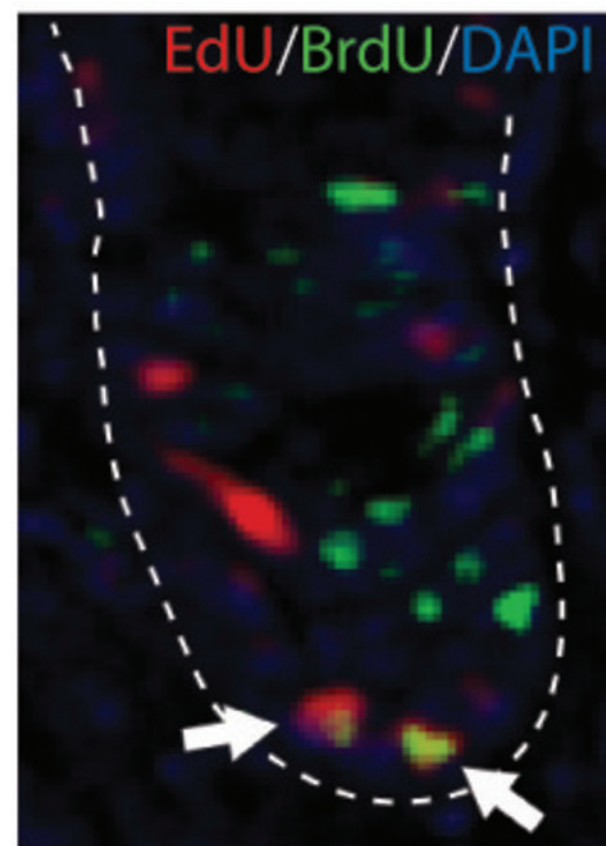
# Supplementary figure 1

## Sequential double labelling of stem cells

A



B



## **Supplementary information**

### **Figure S1. Sequential double labelling of stem cells**

A. This figure is a reproduction of figure 4D, indicating when EdU and BrdU were injected to double label the stem cells.

B. Co-staining for Edu (red), Brdu (green) and DAPI. Arrows indicate stem cells that incorporated the two uridine analogs at two different time points and thus re-entered the cell cycle. Antibody staining for BrdU was done with Bu20a (Dako)