

Figure S1

MS/MS spectra of peptides identified in the 2-D gel electrophoresis spots as PrP tryptic peptides

Sequences identified using the Mascot search engine:

209-220: VVEQMCITQYER

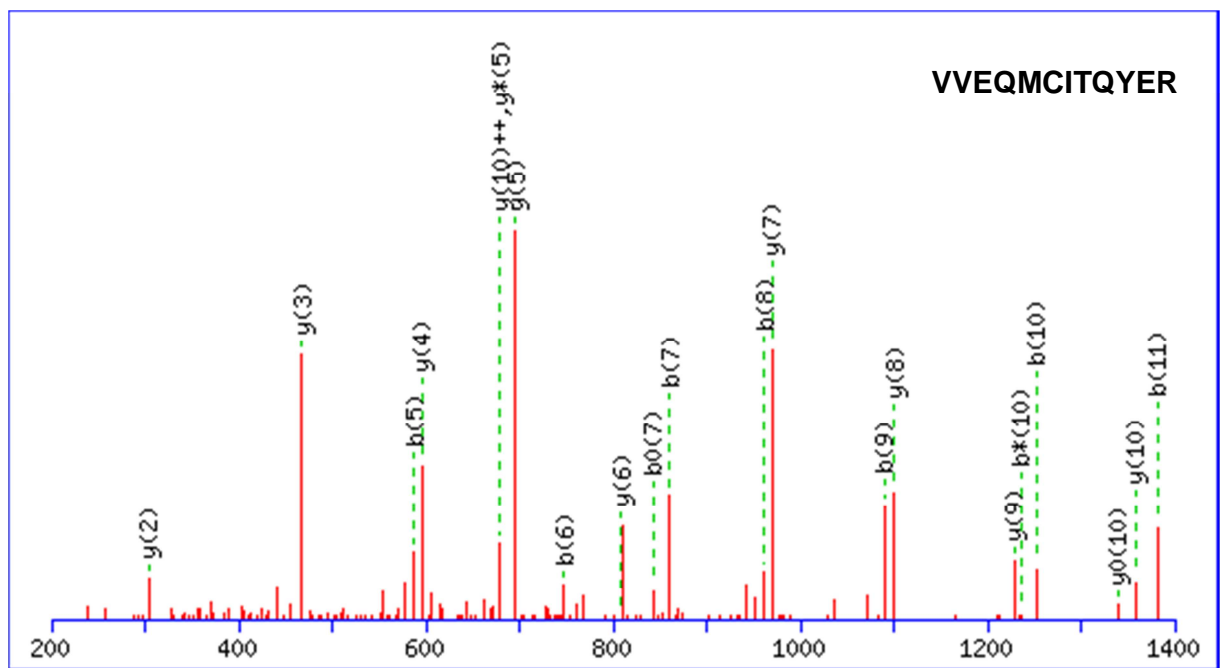
209-220: VVEQMoxCITQYER

137-148: PIIHFGSDYEDR

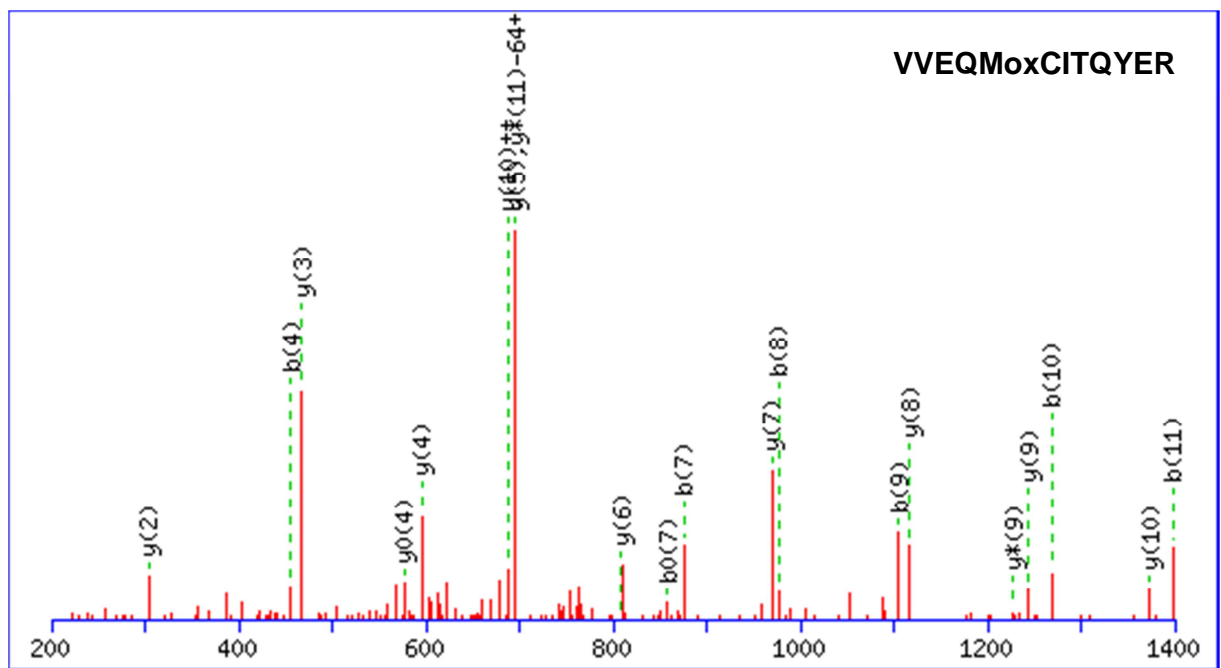
157-164: YPNQVYYR

221-228: ESQAYYQR

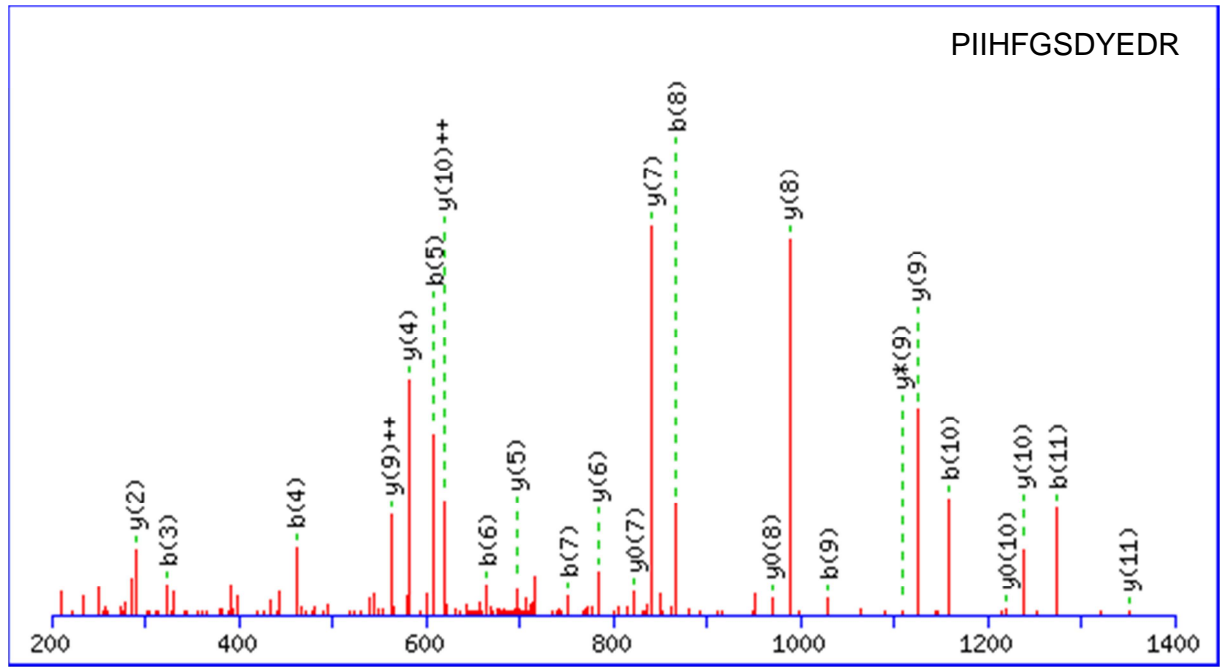
121-136: VVGGLGGYMLGSAMoxSR



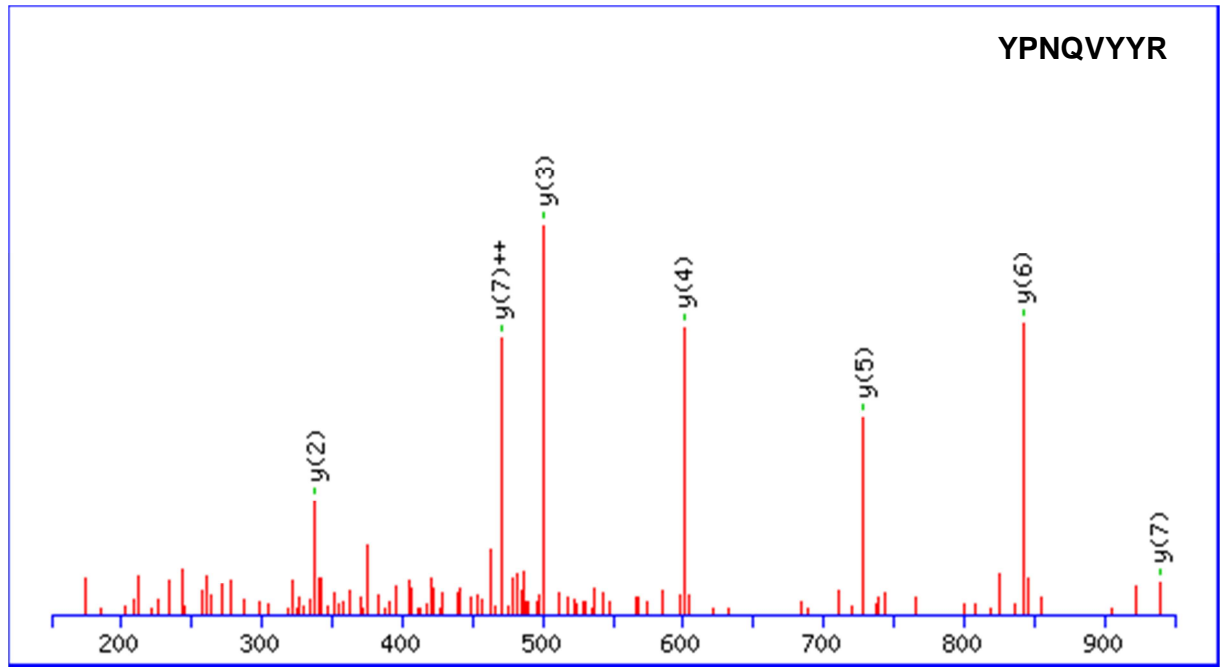
M=1554.8 Da. MS/MS from 778.4 (2+)



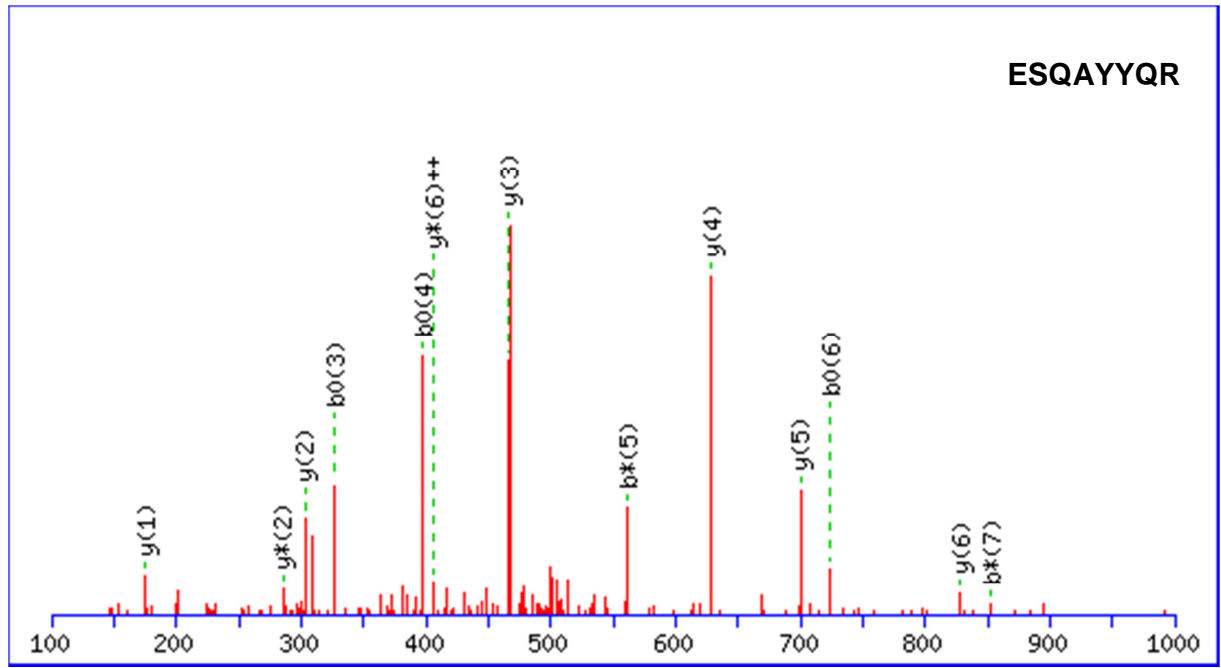
M=1570.7 Da. MS/MS from 786.4 (2+)



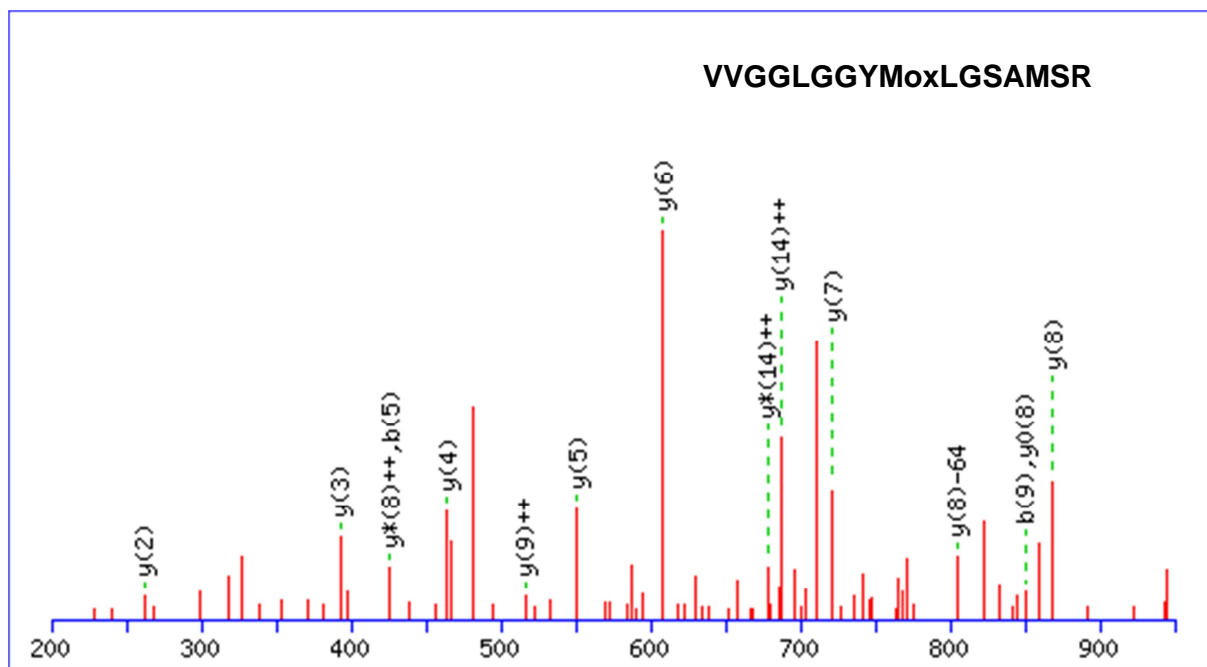
M=1447.7 Da. MS/MS from 724.8 (2+)



M=1101.5 Da. MS/MS from 551.8 (2+)



M=1043.5 Da. MS/MS from 522.7 (2+)



M=1569.7 Da. MS/MS from 785.8 (2+)