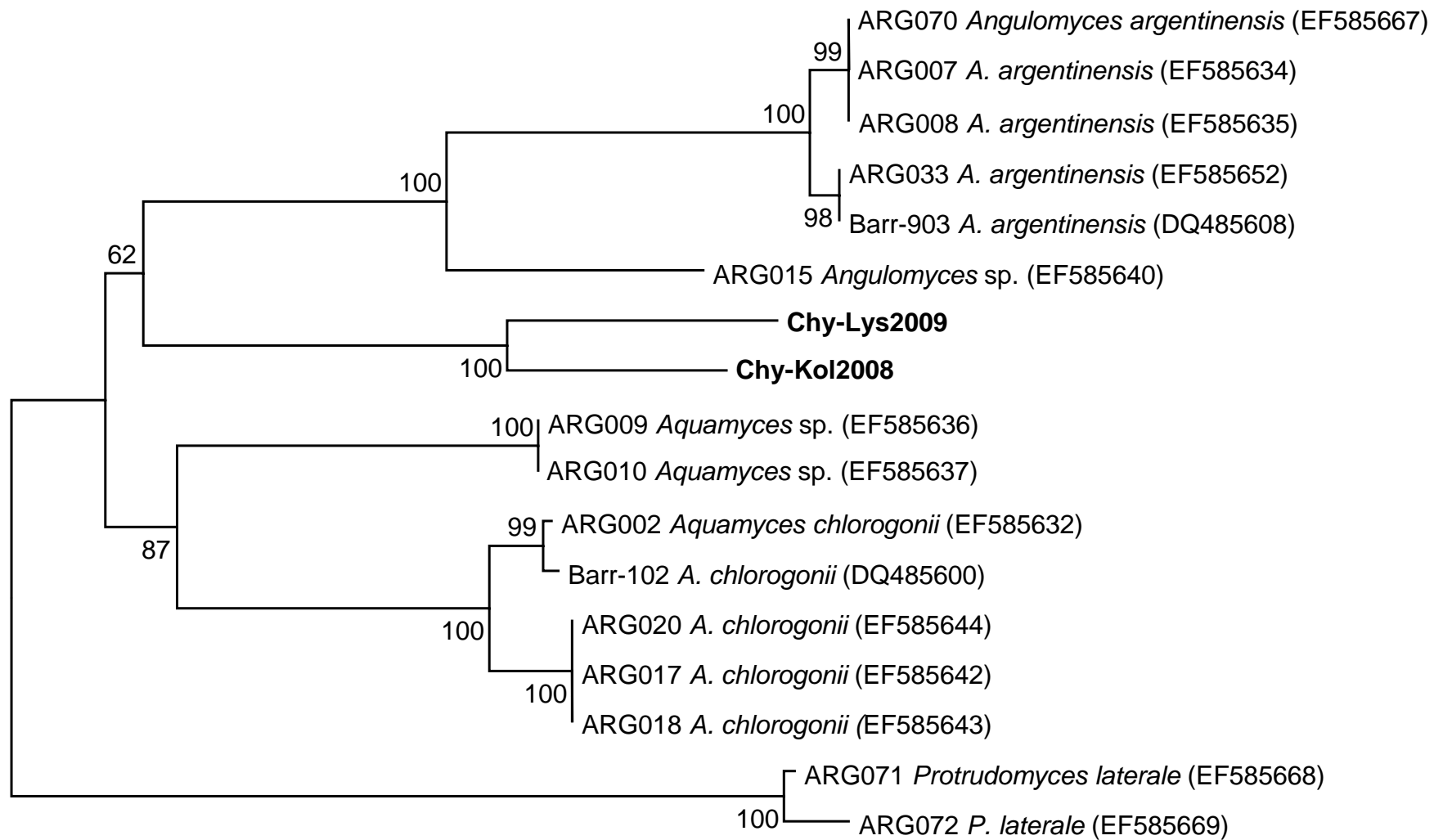


Supplemental Fig. S2A: Neighbor joining tree for the 28S rRNA gene region of our chytrid strains and 103 chytrids of the order Rhizophydiales. The tree bases on 2000 bootstrap re-samplings.



0.05

Supplemental Fig. S2B: Neighbor joining tree for the ITS rRNA region of our chytrid strains and 15 chytrids of the order Rhizophydiales. The tree bases on 2000 bootstrap re-samplings.