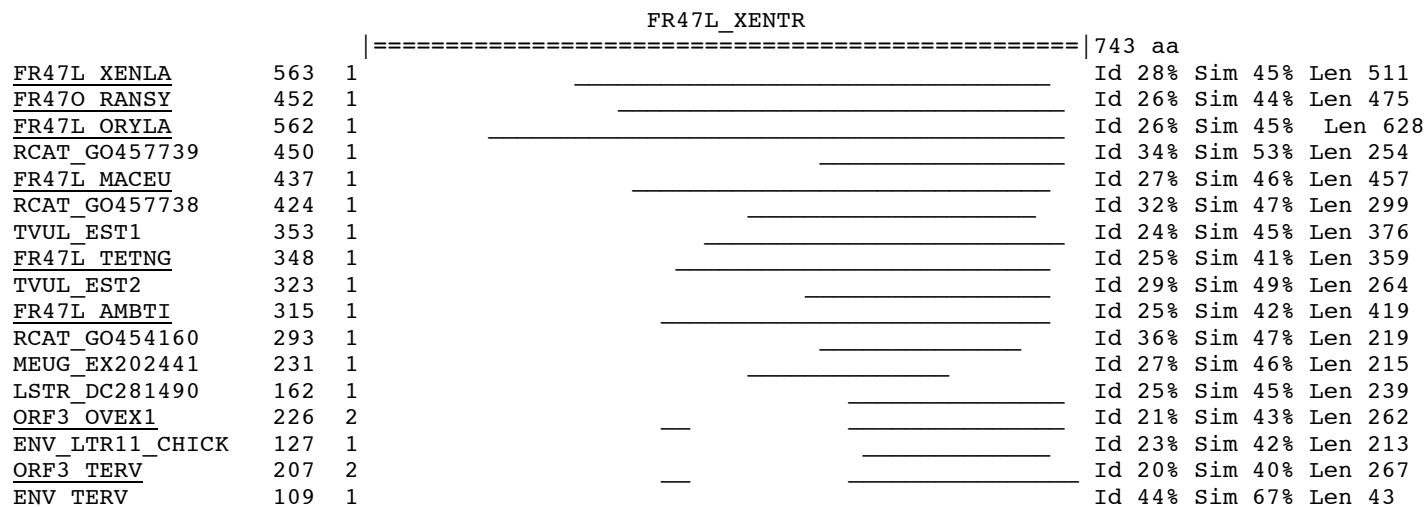


Supplementary data 2 : *X. tropicalis* FR47/env ORF and related sequences

1/ Graphical representation of similarities between *X. tropicalis* FR47/env ORF and related sequences



Underscored sequence identifiers refer to the sequences presented in Figure 1B.

2/ Sequence identifiers

Seq Id	Organism	Common name	Accession Number	Description
-	<i>Ambystoma mexicanum</i>	axolotl	CO790043	NT008C_E07 St18-22 Neural tube (NT)
ENV_LTR11_CHICK	<i>Gallus gallus</i>	chick	GgLTR11	ERV1 Endogenous Retrovirus from chicken
ENV_TERV	<i>Bonasa umbellus</i>	grouse	Q98U09_BONUM	Bonasa umbellus Tetraonine endogenous retrovirus envelope p
FR47_RANSY	<i>Rana sylvatica</i>	Wood frog	AAM47030.1	freeze tolerance-associated protein FR47
FR47L_AMBTI	<i>Ambystoma tigrinum</i>	axolotl	CN060395	CN060395 CN053021 CN054769

FR47L_MACEU	<i>Macropus eugenii</i>	wallaby	CU467811.3	clone MEKBa-280J10
FR47L_ORYLA	<i>Oryzias latipes</i>	medaka	none	ORF:8444..10327 Frame -2 from MEDAKA1:12:15889514:15910701:1
FR47L_TETNG	<i>Tetraodon nigroviridis</i>	tetraodon	none	lcl Sequence 1 ORF:2543..3622 Frame -2 on 19 dna:chromosome:chromosome:TETRAODON8:19:4559354:4565715:1
FR47L_XENLA	<i>Xenopus laevis</i>	Clawed frog	BC084895.1	Xenopus laevis cDNA clone IMAGE:3398112
FR47L_XENTR	<i>Xenopus tropicalis</i>	Clawed frog	HM765512	XTERV1 ORF3 plus ORF4
FR47O_RANSY	<i>Rana sylvatica</i>	Wood frog	AY100690	ORF:1227..3176 Frame +3 of AY100690
LSTR_DC281490	<i>Lonchura striata domestica</i>	finch	DC281490	clone OV02E08
MEUG_EX202441	<i>Macropus eugenii</i>	wallaby	EX202441	SGT20u4_D03
ORF3_OVEX1	<i>Gallus gallus</i>	chick	NP_001159385.1	hypothetical protein LOC422926 [Gallus gallus]
ORF3_TERV	<i>Taeniopygia guttata</i>	zebra finch	none	OVEX1 ortholog;taeGut1, chr. 4, + strand, 65,939,815 to 65,948,592
RCAT_GO454160	<i>Rana catesbeiana</i>	frog	GO454160	rcat_evr_988858
RCAT_GO457738	<i>Rana catesbeiana</i>	frog	GO457738	clone rcat_evr_513_330
RCAT_GO457739	<i>Rana catesbeiana</i>	frog	GO457739	clone rcat_evr_513_330
TVUL_EST1	<i>Trichosorus vulpecula</i>	possum	EC333785	EC333785 EC360884 EC282715 EG612389
TVUL_EST2	<i>Trichosorus vulpecula</i>	possum	EC288767	EC288767 EG596005 EC343934 EC33942