

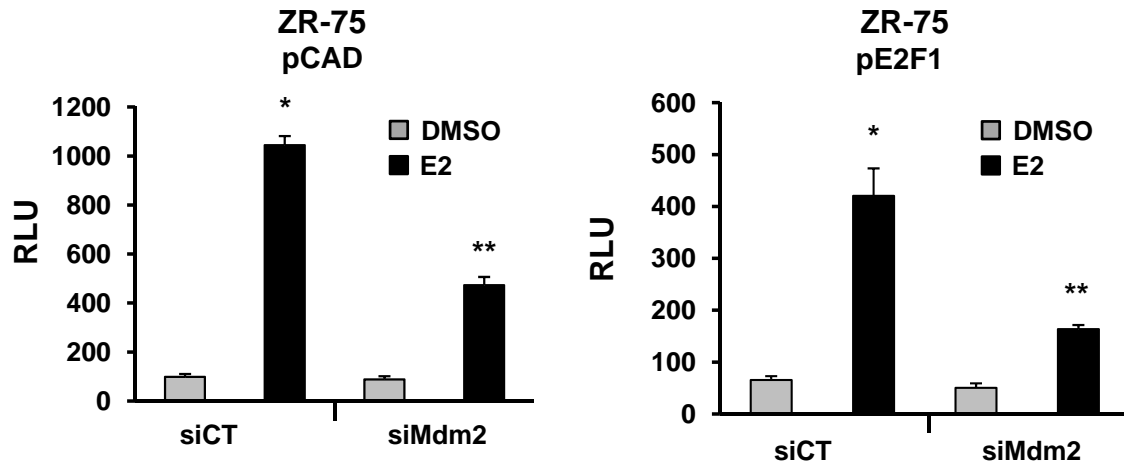
## SUPPLEMENTAL FIGURE CAPTIONS

Supplemental Figure 1. Effects of siMdm2 on transactivation. Cells were transfected with the GC-rich pCAD and pE2F1 constructs, siCT or siMdm2, and treated with E2 or DMSO. Luciferase activities were determined as described in the Materials and Methods. Results are expressed as means  $\pm$  SE (3 determinations) and significant ( $p < 0.05$ ) induction by E2 (\*) or inhibition by siMdm2 (\*\*) is indicated.

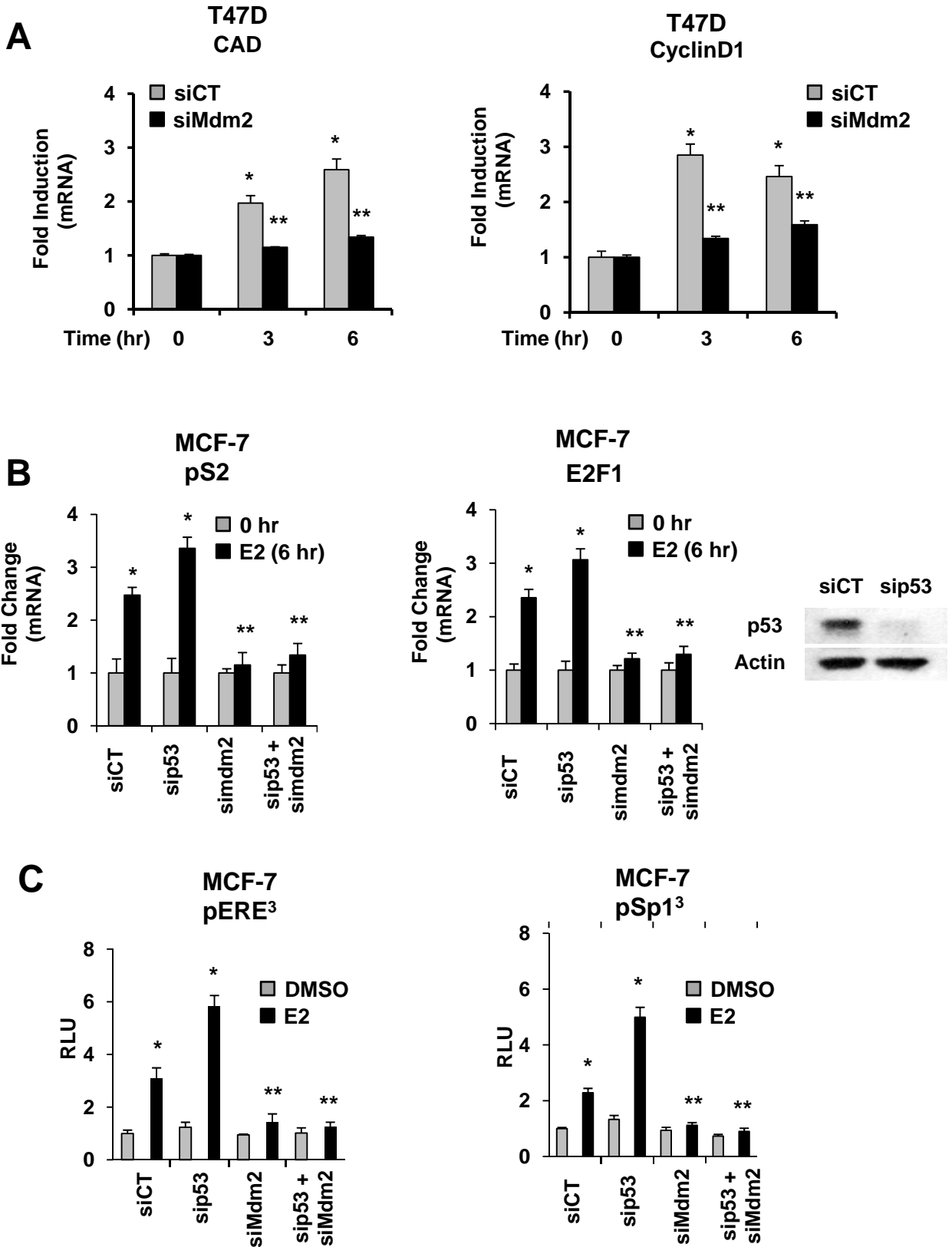
Supplemental Figure 2. Effects of Mdm2 and p53 knockdown on hormone-responsiveness. (A) Induction of CAD and cyclin D1 in T47D cells. siMdm2 on mRNA levels. Cells were transfected with siCT or siMdm2, and treated with DMSO or E2. mRNA levels were determined by real time PCR as outlined in the Materials and Methods. (B) Induction of pS2 and E2F1 in MCF-7 cells. Cells were transfected with different oligonucleotides, treated with 10 nM E2 or DMSO and mRNA levels were determined as described in the Materials and Methods. (C) Induction of luciferase activity in MCF- cells. Cells were transfected with pERE<sub>3</sub> or pSp1<sub>3</sub> and different oligonucleotides, treated with E2 or DMSO, and luciferase activity determined as described in the Materials and Methods. Results in (A) - (C) are expressed as means  $\pm$  SE (3 determinations) and significant ( $p < 0.05$ ) induction by E2 (\*) or inhibition by siMdm2 (\*\*) is indicated. Figure 2B also shows the knockdown of p53 by western blot analyses of whole cell lysates.

Supplemental Figure 3. Analysis of Mdm2 expression (high or low) from ER-positive breast cancer patients from the Nederlands Kanker Instituut.

Supplemental Figure 1



Supplemental Figure 2



### Supplemental Figure 3

NKI Data N=226 (ER $\alpha$  positive patients)

