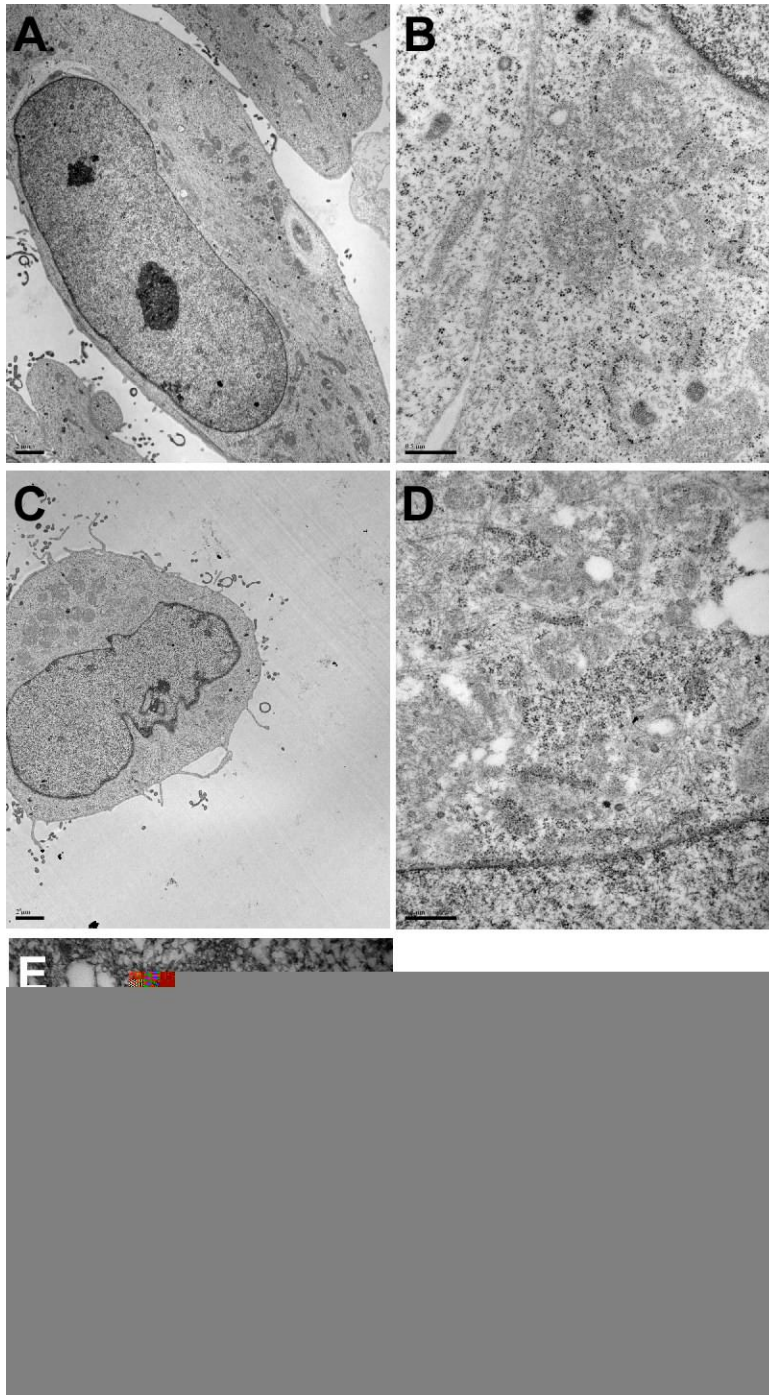


**EXPLOITATION OF A MITOCHONDRIAL UNFOLDED PROTEIN RESPONSE  
FOR CANCER THERAPY IN HUMANS**

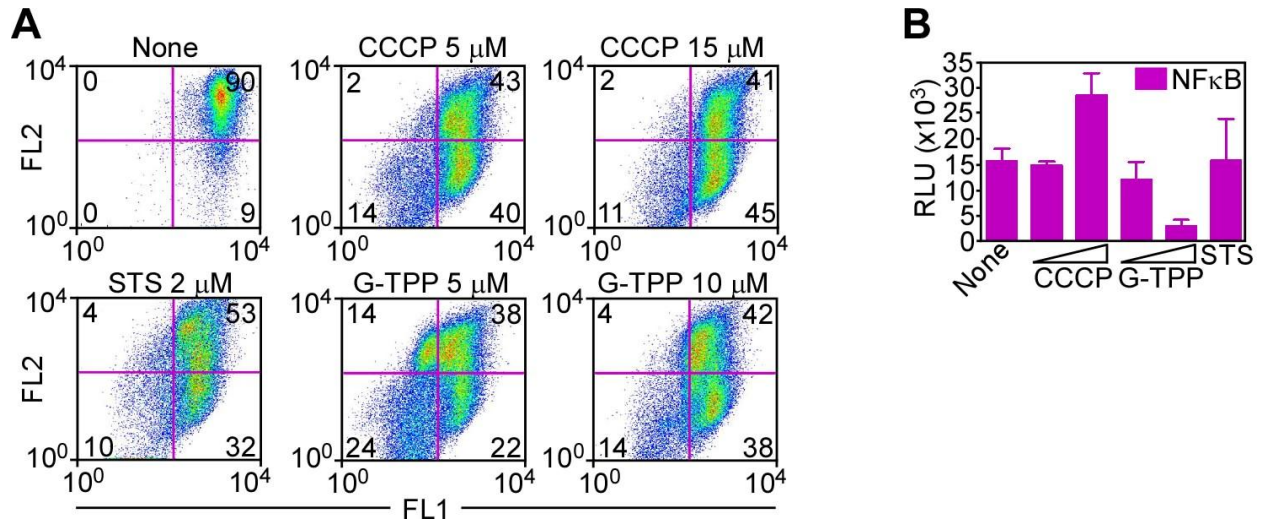
Markus D. Siegelin, Takehiko Dohi, Christopher M. Raskett, Gregory M. Orlowski,  
Christine M. Powers, Candace Gilbert, Alonzo Ross, Janet Plescia, and Dario C. Altieri

**SUPPLEMENTAL FIGURES 1-3**



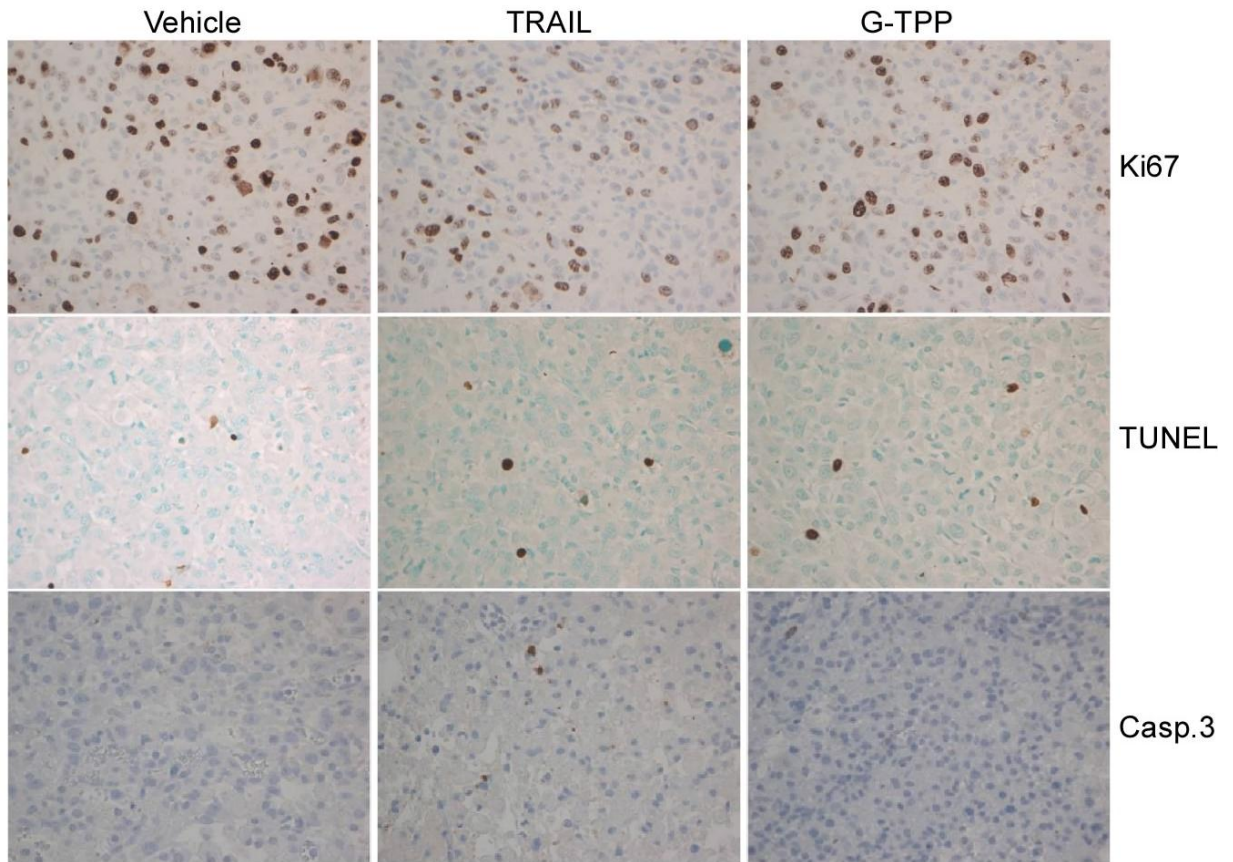
**Supplemental Figure 1. Electron microscopy.** LN229 cells were left untreated (**A, B**) or incubated with non-targeted 17-AAG (10 μM, **C, D**) for 16 h and analyzed by transmission

electron microscopy. **(E)** G-TPP-treated LN229 were incubated with immuno-gold-conjugated, non-binding IgG. Scale bars, 2  $\mu\text{m}$  (**A, C**), 1  $\mu\text{m}$  (**B, D**), 200 nm (**E**).



**Supplemental Figure 2. Effect of mitochondrial membrane depolarization and apoptosis**

**on NF $\kappa$ B activity.** (A) LN229 cells were treated with the indicated concentrations of the mitochondrial uncoupler, CCCP, the broad-spectrum apoptotic stimulus, staurosporine (STS), or G-TTP, and analyzed for changes in mitochondrial membrane potential by JC-1 staining and multiparametric flow cytometry. FL1, green fluorescence channel; FL2, red fluorescence channel. The percentage of cells in each quadrant is indicated. (B) LN229 cells were transfected with a NF $\kappa$ B luciferase reporter construct, treated with CCCP (5-15  $\mu$ M), G-TTP (5-10  $\mu$ M), or STS (2  $\mu$ M), and analyzed after 5 h for  $\beta$ -galactosidase-normalized luciferase activity. None, untreated; RLU, relative luciferase units. Mean $\pm$ SEM of replicates.



**Supplemental Figure 3. Antiglioma activity of TRAIL plus G-TPP combination, in vivo.**

Brain sections from mice with intracranial glioblastomas treated with monotherapy as indicated were analyzed for reactivity for Ki67, *in situ* internucleosomal DNA fragmentation (TUNEL), or cleaved caspase 3 (Casp.3), by immunohistochemistry.